

38TH ANNUAL CONFERENCE

*Missouri Mappers Association*

*Chateau on the Lake, Branson, Missouri*

HOLLYWOOD



MISSOURI MAPPERS ASSOCIATION

AUGUST 15-18, 2022

**Springfield Blue Print**  
219 E. Pershing St.  
Springfield, MO 65806  
417.849.3828  
Tiffany Rogers  
trogers@spfdbblue.com

**Surdex Corporation**  
520 Spirit of St. Louis Blvd.  
Chesterfield, MO 63005  
636.368.4400  
Jack King & Wade Williams  
Jack.king@surdex.com

**SAM Companies**  
4801 Southwest Pkwy.  
Building Two, Suite 100  
Austin, TX 78735  
512.720.1257  
Krista Erskine  
krista.erskine@sam.biz

**Schneider Geospatial**  
8901 Otis Ave.  
Indianapolis, IN 46216  
317.826.7271  
Stephanie Richardson  
srichardson@schneidergis.com

**Stronghold Data**  
PO Box 3687  
Joplin, MO 64803  
417.627.9878  
Jason Rincker  
Jason.rincker@strongholddata.com

**THANK YOU!**  
to our exhibitors

## Your Title Insurance Provider Across Mid-Missouri

**Columbia**  
111 E. Broadway, Ste. 100  
Columbia, MO 65203  
Phone: 573-441-0725  
Fax: 573-441-0705

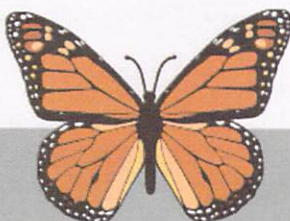
**Jefferson City**  
305 E. McCarty, Ste 300  
Jefferson City, MO 65101  
Phone: 573-556-6214  
Fax: 573-556-6236

**Boonville**  
515 E. Morgan St.  
Boonville, MO 65233  
Phone: 660-882-2888  
Fax: 660-882-2424

**Marceline**  
100 S. Main Street USA  
Marceline, MO 64658  
Phone: 660-376-9058  
Fax: 573-441-0705

**Centralia**  
1234 N Remington Dr  
Centralia, MO 65240  
Phone: 573-982-1999  
Fax: 573-441-0705

titles@monarchtitle.com | closer@monarchtitle.com



**Monarch Title Company, Inc.**



A New Charter TECHNOLOGIES Company >>

**Proudly serving Missouri counties  
for over 20 years, providing  
comprehensive technology  
support.**

**CONTACT US**  
**STRONGHOLDDATA.COM**  
**TOLL FREE:**

**1-866-787-6644**

# Schedule of Events

## Monday, August 15

3:30-5:00 Registration - Preconvene Area

5:00-6:30 Welcome - Reception Heidelberg

7:00 Movie Night -  
Versailles Room



## Tuesday, August 16 Workshop

7:00-8:00 Registration - Preconvene Area

8:00-9:00 Breakfast Provided - Versailles Room

9:00-9:15 President's Welcome

9:15-10:00 Keynote Speaker

10:00-10:15 Break

10:15-11:45 Jason Rinker, Stronghold Data - Milan/Venice Room

11:45-1:00 Lunch - on your own

1:00-2:30 Chris Dunn Legal Fundamentals Of GIS Data  
- Milan/Venice Room

2:30-2:45 Break

3:00-5:00 Tony Wilmes, SAM - Parcel Mapping 101

5:30-7:30 Vendors Red Carpet Reception Versailles Room

7:30 Trivia Night

## Wednesday, August 17 Presentation

7:00-8:00 Registration - Preconvene Area

8:00-9:00 Tony Wilmes - Advance Deed Parcel Mapping

9:00-10:00 Branden Wolfe

10:00-11:00 911

11:00 - 11:15 Break

11:15 - 12:00 Andrew Harrison - Creative GIS Solutions to Today's Problems

## Wednesday Continued...

- 12:00-1:30 Lunch Provided - Versailles Room  
1:30 - 2:30 Discussion Panel - Nathan Maddox, Tim Bixler,  
Shawn Penman and Tom Bought  
2:30 - 3:15 Arron Kettle & Marti Suiter - State Statutes  
3:15 - 3:30 Break  
3:30 - 4:15 Chase Fisher - The Modernization of GIS  
4:15 - 5:00 Chase Fisher - Mobile Workflows  
5:00 Dinner - on your own

Hollywood Wax Museum Night -  
Make sure you have your tickets.  
Museum is open until midnight.



## Thursday, August 18 Business Meeting

- 8:00 - 9:00 Breakfast Provided Versailles Room  
9:00 - 10:00 Annual Business Meeting



**Better images.  
Better data.  
Better outcomes.**



We know you need to provide fair, equitable, and defensible property valuations.

That's why we offer comprehensive aerial imagery solutions for remote mapping and assessment integrated directly into your current workflow.

Contact Alexandra Stark to discuss how EagleView can provide a custom solution to meet your needs.



**Alexandra Stark**

[alexandra.stark@eagleview.com](mailto:alexandra.stark@eagleview.com)

District Manager - Kansas & Missouri  
660.322.0153



**PRESIDENT**

Amanda Bybee  
abybee@stlmsd.com

**PRESIDENT ELECT**

Carla Palmer  
Jasper County  
cpalmer@jaspercountymo.gov

**SECRETARY**

Arron Kettle  
Callaway County  
akettle@callawaycounty.org

**TREASURER**

Lisa Perry  
Jasper County  
lisajasperco@gmail.com

**2021-2022 DIRECTOR**

Lisa Mendpara  
Cass County  
lisam@casscounty.com

**2021-2022 DIRECTOR**

Sue Ann Stokes  
McDonald County  
sueann.stokes@mcdonaldcountymo.gov

**IMMEDIATE PAST PRESIDENT**

Matt Sorensen  
Midland GIS Solutions  
matt.sorensen@sam.biz



**2021-2022**

**Committee Chairs**

**ANNUAL MEETING**

Jody Paschal

[jpaschal@callawaycounty.org](mailto:jpaschal@callawaycounty.org)

**AWARDS**

Alice Lee

[alee@jeffcomo.org](mailto:alee@jeffcomo.org)

**CERTIFICATION**

Alice Lee

[alee@jeffcomo.org](mailto:alee@jeffcomo.org)

**EDUCATION**

Vacant

**HISTORICAL**

Sue Ann Stokes

[sueann.stokes@mcdonaldcountymo.gov](mailto:sueann.stokes@mcdonaldcountymo.gov)

**MEDIA**

Sue Ann Stokes

[sueann.stokes@mcdonaldcountymo.gov](mailto:sueann.stokes@mcdonaldcountymo.gov)

**LEGISLATION**

Vacant

**MEMBERSHIP**

Lisa Perry

[lperry@jaspercountymo.gov](mailto:lperry@jaspercountymo.gov)

# And the Oscar Goes to...

Congratulations to each of our winners in 2021 for their outstanding contributions to MMA



**Mapper of the Year:**

Raelynn Hinderson

**Boss of the Year:**

Lisa Perry

**Fireball Award:**

Jody Paschal

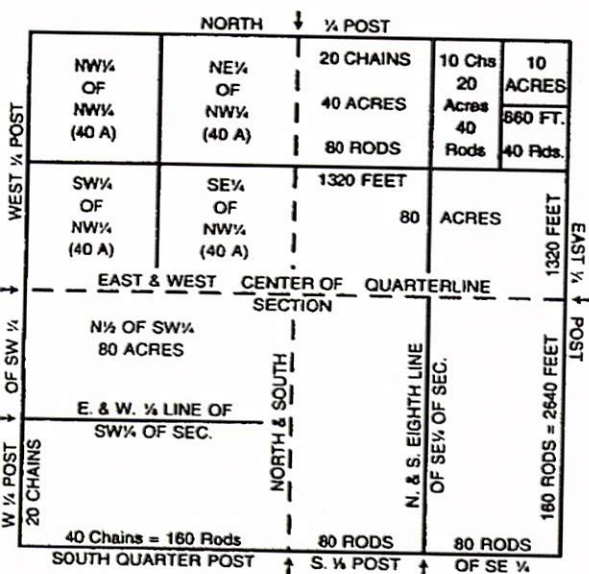
**President Award:**

Matt Sorensen

**Annual Meeting:**

Jody Paschal

## A SECTION OF LAND, 640 ACRES



### LONG MEASURE

- 1 Mile — 80 Chains
- 320 Rods
- 5280 Feet
- 1 Chain — 4 Rods
- 66 Feet
- 100 Links
- 1 Rod — 5½ Yards
- 16½ Feet
- 25 Links
- 1 Link — 0.66 Feet
- 7½ Inches

### SQUARE MEASURE

- 1 Sq. Mile — Regular Section
- 640 Acres
- 1 Acre — 10 Sq. Chains
- 160 Sq. Rods
- 43,560 Sq. Feet
- An Acre is about 208¼ feet sq. An acre is about 8 rods wide, 20 rods long, or any area the product of whose length by its width (in rods) is 160 or in chains is 10.
- 1 Sq. Rod — 30¼ Sq. Yds.
- 272¼ Sq. Ft.
- 1 Sq. Ft. — 144 Sq. Inches





# GIS SERVICES //

GPS DATA COLLECTION  
INSPECTION & INVENTORY  
MAPPING & DATA DEVELOPMENT  
WEB & MOBILE APPLICATIONS  
MAINTENANCE & SUPPORT

SAM offers a complete range of solutions  
to move GIS projects ahead quickly, reliably, and safely.



[sam.biz](http://sam.biz)

<b>Carole Abernathy</b>
Bollinger County Mapping
573.238.3854
carolea@bocogov.com
<b>Jessica Adcock Goodman</b>
Assessor, Saline County
660.886.4380
assessor@salinecountymo.org
<b>Kimberly Armour</b>
Mapper, Ralls County
573.985.3292
rcmap@rallscountymo.gov
<b>Pamela Ashford</b>
Adair County Mapper
660.785.3210
pashford@adaircomo.com
<b>Doug Bowerman</b> ✓
Assessor, Lawrence County
417.466.2831
lcmoassessor@sofnet.com

<b>Am'Ber Baldwin</b>
Hickory County Assessor's Office
417.745.6346
hickorycoassessorab@gmail.com
<b>Kent Bryant</b>
Adair County Assessor
660.665.4423
kbryant@adaircomo.com
<b>Laura Cole</b>
Mapping Division Supervisor, Jefferson County
636.797.6412
lcole@jeffcomo.org
<b>Stephanie Colley</b> ✓
Real Estate Clerk, Lawrence County
471.466.2831
lcmoassessor@sofnet.com
<b>Jeff Davis</b>
Cartographer, Boone County
573.886.4262
jdavis@boonecountymo.org

**Best wishes for a**



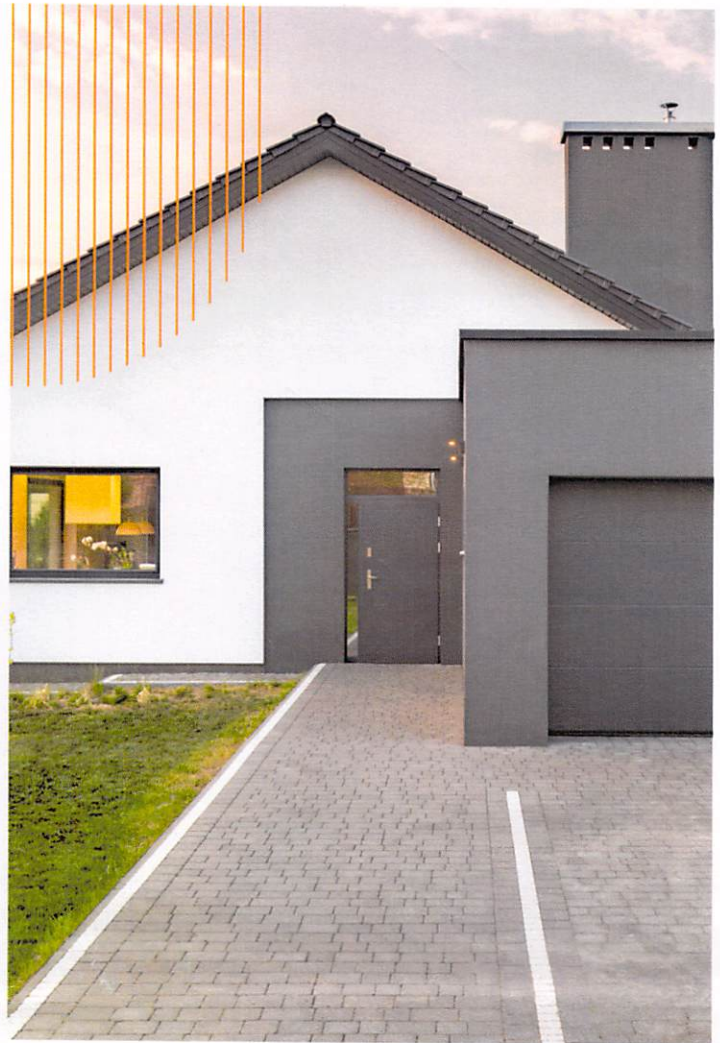
**successful conference**



**YOUR HOME,  
YOUR LAND,  
YOUR BUSINESS;  
WE MAKE IT  
EASIER.**

*Serving all of Central Missouri*

MIDWESTTITLELLC.NET  
P: (573)-635-0615  
INFO@MIDWESTTITLELLC.NET  
ANNA@MIDWESTTITLELLC.NET  
2316 ST. MARY'S BLVD  
SUITE 110, JEFFERSON CITY, MO  
65109



<b>Gregory Dryer</b> ✓
Field Appraiser, Lawrence County
417.229.1167
greg.dryer@yahoo.com
<b>Jason Dutton</b>
Mapping Technician, Jefferson County
636.797.6272
jdutton@jeffcomo.org
<b>Randi Ederer</b>
Ripley County Assessor
573.996.5500
ripleycoassessor@outlook.com
<b>Ronda Elfrink</b>
Bollinger County Assessor
573.238.1900
assessor@bocogov.com
<b>Chase Fisher</b>
Esri, Inc. - State/Local Govt
909.369.8511
cfisher@esri.com

<b>Daniel Franks</b> ✓
Assessor Howell County
417.256.8284
D.franks@howellcounty assessor.com
<b>Chrissy Gillis</b>
Putnam County Assessor
660.947.3900
assessor@nemr.net
<b>Becky Hebblethwaite</b>
GIS Tech I, Clay County
816.407.3374
bhebblethwaite@claycountymogov
<b>Rachelle Hunter</b>
Mapper, Macon County Assessor Office
660.385.2416
assessor3@cvalley.net
<b>Lauren Ince</b> ✓
Mapper, Wright County
417.741.6400
assessorrealestate@wrightcountymogov


<b>Debbie James</b> ✓
Assessor Texas County
417.967.4709
assessor@texascountymissouri.gov
<b>Larry Jones</b>
State Tax Commission
816.271.3477
Larry.jones@stc.mo.gov
<b>Barbara Kaszuba, PMM</b> ✓
Mapper Retired, Jasper County
417.483.1853
bakaszuba@gmail.com
<b>Tim Kean, PMM</b> ✓
GIS Coordinator, Phelps County
573.458.6135
tim.kean@phelpscounty.org
<b>Arron D. Kettle</b>
Mapper, Callaway County
573.642.0768
akettle@callawaycounty.org

<b>Christine Kleindienst</b>
Recorder of Deeds, Callaway County
573.642.0787
christinek@callawaycounty.org
<b>Fawn Knoll</b>
Deputy Assessor, Monroe County
877.433.3061
monroecountymaps@hotmail.com
<b>Scott Largent</b>
Henry County Assessor
660.525.1906
slargent64735@gmail.com
<b>Alice Lee</b>
Mapping Technician, Jefferson County
636.797.6274
alee@jeffcomo.org
<b>Gayle Linneman</b>
Cooper County Assessor's Office
660.621.0441
reclerk@coopercountymo.gov

**Thank  
YOU**

**MISSOURI  
MAPPERS!**

*You're the best!*

True Line   
Title Company

# SPRINGFIELD BLUE PRINT

Been in business for over 90 years

## Authorized Dealer

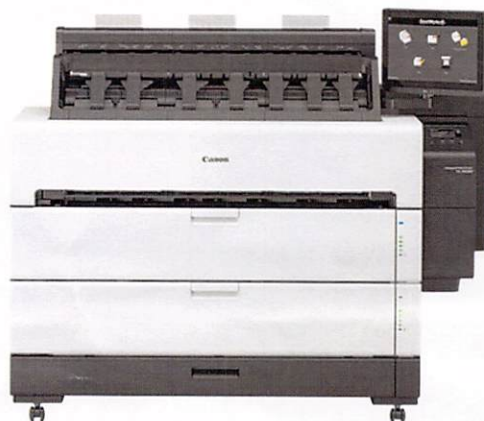
Canon



EPSON



### Large and Small Format Printers, Copiers and Scanners



### Machine Sales, Service and Supplies


## Call Tiffany Now (417) 849-3828

[www.spfdbblue.com](http://www.spfdbblue.com) • 219 E Pershing • Springfield, MO 65806




# VANGUARD APPRAISALS, INC

## MAP YOUR WAY TO EXCELLENT PEOPLE, PRODUCTS, & SERVICES

CAMAVISION® MASS APPRAISAL SOFTWARE WITH 330+ CLIENTS 

 COMBINE CAMA & WEBSITE GIS MAPPING FOR INTEGRATED ANALYZATION

145 WEBSITES, OVER 3,700,000 PROPERTIES ONLINE, & OVER 61,500,000 VISITORS 

 ASSISTING APPRAISERS, REALTORS, BANKERS, INSURANCE AGENTS, & THE PUBLIC

A LEADER IN MASS APPRAISAL SERVICE & CONSULTATION FOR OVER 50 YEARS 

CONTACT US FOR A FREE ON-SITE CAMAVISION® DEMONSTRATION



**MIKE WEEKS**  
815-757-1449  
mike@camavision.com



**JENNIE WILLIS**  
573-480-2115  
jenniew@camavision.com



**JOEL ZITTERICH**  
515-231-6975  
joelz@camavision.com

www.camavision.com  
319-365-8625



<b>Woody McCutcheon</b>
Howard County Assessor
660.248.3400
hocoass@yahoo.com
<b>Christine McKinney</b>
Research Specialist / Landman Title Company
660.281.3324
mckinneyc10@gmail.com
<b>Tiffany Meehan</b>
911 Address/GIS Clerk, Cape Girardeau County
573.204.2502
tcmeehan@capecounty.us
<b>Lisa Mendpara</b>
GIS Coordinator, Cass County
816.380.8190
lisam@casscounty.com
<b>Lisa Miles</b>
Shelby County Assessor
573.633.2521
shelbyassessor@marktwain.net
<b>Jacob Millam</b>
GIS Specialist/SEMO Planning Commission
573.547.8357
jmillam@semorpc.org
<b>Lora J. Miller</b> ✓
Mapper, Vernon County
417.448.2530
lmiller@vernoncountymomo.org
<b>Kenny Mohr</b>
Boone County Assessor
573.886.4270
kmohr@boonecountymomo.org
<b>Mark Novak</b>
Marion County Assessor
573.248.1515
mnovak@marioncounty-mo.gov
<b>Carla Palmer</b> ✓
Chief Deputy/Mapper, Jasper County Assessor
417.237.1042
cpalmer@jaspercountymomo.gov

<b>Jody Paschal</b>
Callaway County Assessor
573.642.0766
jpaschal@callawaycounty.org
<b>Misty Perry</b>
Land Survey/GIS Tech MDA Land Survey Prog
573.368.2325
Misty.perry@mda.mo.gov
<b>Aaron Piburn</b>
Daviess County Assessor
660.663.3300
assessor@daviesscountymomo.gov
<b>Mark Reynolds</b>
Johnson County Assessor
660.238.4915
mreynolds@jocoassessor.com
<b>Chris Rickman</b>
Butler County Assessor
573.686.8084
crickman@butlercountymomo.com
<b>Lydia Reitzel</b>
Real Estate Clerk, Cape County Assessor Office
573.576.6568
lreitzel@capecounty.us
<b>Donna Ribble</b>
Mapping Technician, Jefferson County
636.797.6273
dribble@jeffcomo.org
<b>Sarah Roach</b>
Hickory County Assessor Office
417.745.6346
landtiser_7sarah@live.com
<b>Dan Rose</b>
GIS Manager, City of Columbia
785.554.2250
Dan.rose@como.gov
<b>Sarah Rose</b>
GIS/Mapping Supervisor, Clay County
816.407.3377
srose@claycountymomo.gov



# Surdex Missouri Statewide Contract #CS210470002

## Photogrammetric Mapping Products and Services

Contact Suredex to find out more information on how to use the Missouri Statewide Contract for your future ortho imagery, mapping and lidar projects.

---

### CONTACT

Jack King, Business and Development  
direct 601-405-4070 • [jack.king@suredex.com](mailto:jack.king@suredex.com)  
[suredex.com](http://suredex.com) • 636-368-4400



Your Strategic  
Geospatial Resource



<b>Penny Shannon</b>
Real Estate Appraiser, Saline County
660.886.4380
pshannon@salinecountymmo.org
<b>Kylie Sidwell</b>
Mapper, Pettis County Assessor's Office
660.525.2834
sidwellk@pettisco.com
<b>Doug Southers</b>
Mapper, Henry County Assessor's Office
660.525.3457
dosouthers@yahoo.com
<b>Sue Ann Stokes</b> ✓
McDonald County Assessor
417.223.2227
sueann.stokes@mcdonaldcountymmo.gov
<b>Martha (Marti) Suiter</b>
Mapper, St. Clair County
417.327.7246
martisuiter@aol.com
<b>George Taylor</b>
Johnson County Deputy Assessor
660.747.9822
gtaylor@jocoassessor.com
<b>Stacey Taylor</b>
Ripley County Assessor's Office
573.996.5500
ripleycoassessor@outlook.com
<b>Lori Test</b>
Real Estate Clerk, Audrain County
573.473.5827
ltest@audraincounty.org
<b>James Theisen</b>
GIS & Grants Director, Pettis County
660.221.9627
gis@pettisco.com
<b>Lori Thompson</b>
Bollinger County Assessor's Office
573.579.7329
lorit@bocogov.com

<b>Sandra Vandelicht</b>
Deputy Recorder of Deeds, Callaway County
573.220.6783
svandelicht@callawaycounty.org
<b>Diedra Volkart</b>
Callaway County Assessor's Office, Retired
573.680.1769
dvolkart@yahoo.com
<b>Bridget Welker</b>
Real Property/Utility Supervisor, Cape Girardeau County
573.846.6018
bmwelker@capecounty.us
<b>Dana Widner</b>
Mercer County Assessor
660.748.3511
assessor@grm.net
<b>Rachel Willhite</b> ✓
Assessor Wright County
417.259.2511
wrightcountyassessor@gmail.com
<b>Craig Williams</b>
Lafayette County Assessor
660.259.6158
C.williams@lafayettecountymmo.com
<b>Christopher Woolery</b>
Pettis County Assessor
660.826.5000
wooleryc@pettisco.com
<b>Tanya Zimmerman</b>
Dekalb County Assessor
816.449.2212
Tanya.zimmerman@dekalbcountymmo.gov



**MMA**  
Missouri Mappers Association



 **Beacon**<sup>TM</sup>

So user friendly,  
why doesn't every  
County have this  
system?

“ I've never had bad service from Beacon. They always go above and beyond. ”

*Tonja Friend, GIS Technician  
Taney County, Missouri*

“ I love having Beacon in my corner. You guys do so many little things in the background. ”

*Brandon Hollinberger, GIS Technician  
Platte County, Missouri*

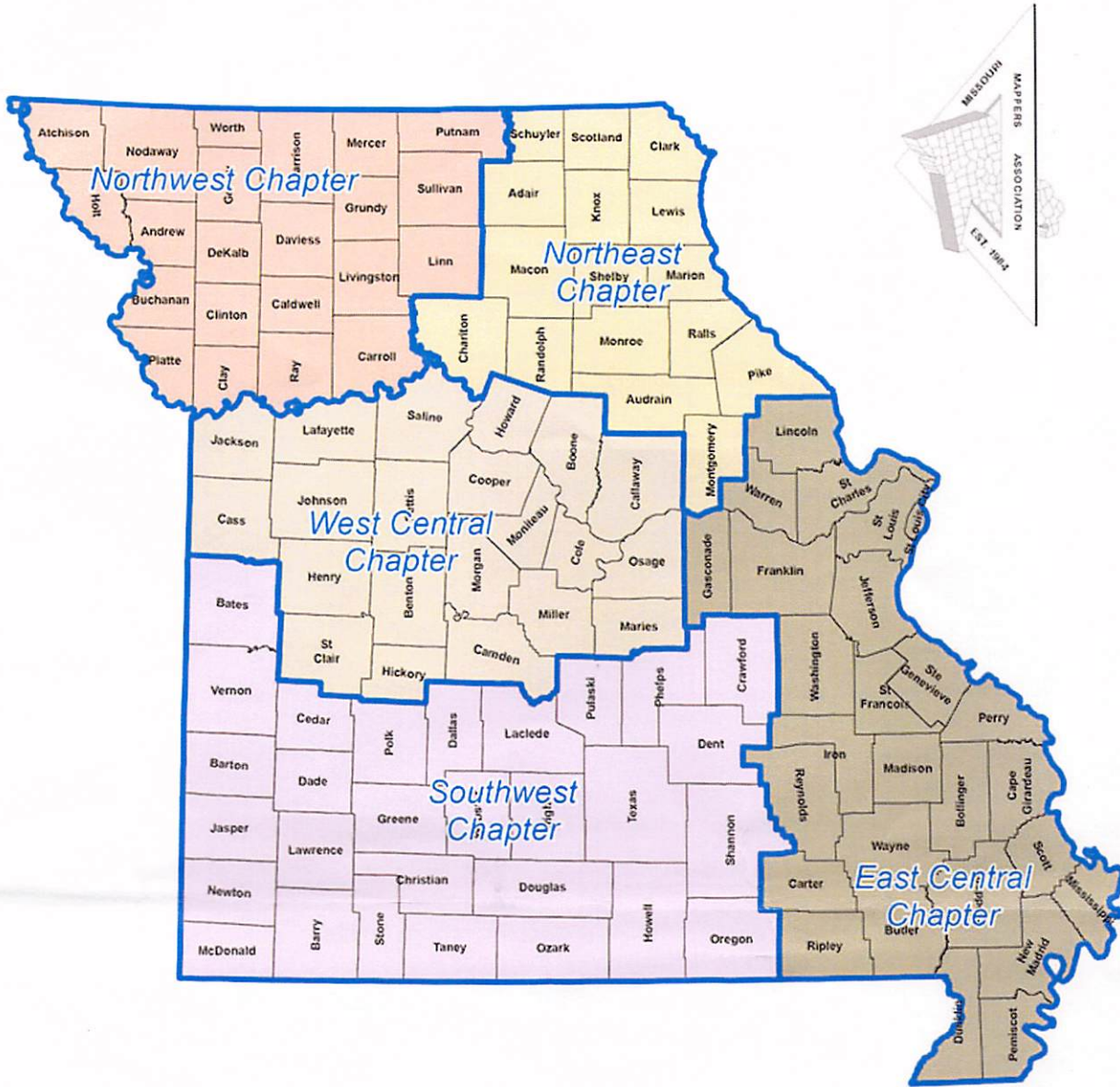
Attend my Presentation

**Creative GIS Solutions to Today's Problems**

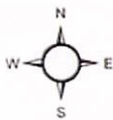
Wednesday, August 17<sup>th</sup> at 11:15 AM

**Andrew Harrison**

**317-826-7393 | [aharrison@schneiderGIS.com](mailto:aharrison@schneiderGIS.com)**



# Missouri Mappers Association Chapters



**2023**  
Missouri Mappers Conference



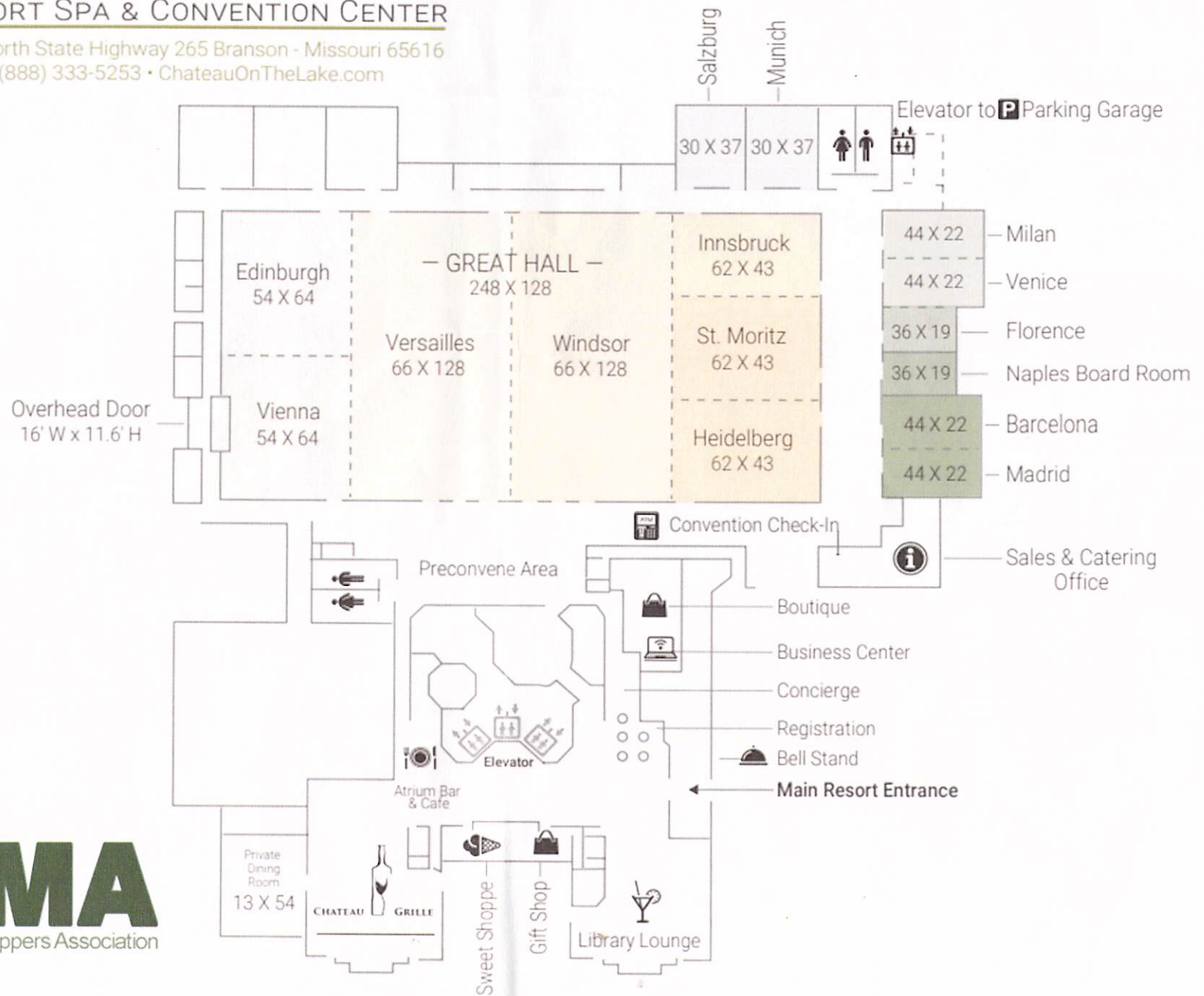
**MMA**  
Missouri Mappers Association

Old Kinderhook Resort,  
Golf club, & Spa  
Camdenton, Missouri  
August 15-18, 2023



# CHATEAU ON THE LAKE RESORT SPA & CONVENTION CENTER

415 North State Highway 265 Branson - Missouri 65616  
(888) 333-5253 • ChateauOnTheLake.com



**MMA**  
Missouri Mappers Association