



Volume 2 Issue 3, AUGUST, 1986

MMA NEWS

MISSOURI MAPPERS ASSOCIATION

P. O. BOX 1692
JEFFERSON CITY, MISSOURI 65102

PRESIDENTS MESSAGE

As Missouri Mappers Association enters its third year, it is gratifying to review the progress we have made since our inception in 1984. We have had two successful conventions, our certification program is activated, our education programs have been filled to capacity and we were successful in our support for maintenance legislation. Without dedication in our support for maintenance legislation. Without the dedication and hard work of our officers and members, we would not have attained these accomplishments. Our next year will be an exciting one and I am pleased to have been selected to guide MMA through the plans and programs being considered by your Board of Directors and Committee Chairmen. Please give them your support when asked for assistance, and as always, let us know what programs you would like to see and what ideas you have to improve MMA.

A special note of thanks to our previous Board of Directors and Committee Chairmen - their dedication to their positions has made the challenges for the new officers easier to accept!

Let's make a commitment to work together this year for the betterment of MMA!

Gail Sawicki, PMM
President

1986 - 87

OFFICERS AND COMMITTEE CHAIRPERSONS

At the second annual meeting of the Missouri Mappers Association the election of officers took place, with the following results:

Gail Bauche Sawicki, PMM
President
903 West Sprigfield
Union, Missouri 63084
(314) 583-8181

Don Cleveland
Vice President
M.J. Harden Associates, Inc.
1019 Admiral Boulevard
Kansas City, Missouri 64106
(816) 842-0141

Mary Ann Kaiser
Secretary
Miller Associates
Building 5, Suite 100
409 Vandiver Drive
Columbia, Missouri 65202
(314) 443-1666

Ken Eftink, PMM
Treasurer
Mapping & Appraisal Office
44 North Lorimier
Cape Girardeau, MO 63701
(314) 335-3790

Patricia Hughes
General Counsel
Hale, Kinkeade, Walters &
Allen, P.C.
Liberty, Missouri 64068
(816) 459-1600

Jan Elliot
Immediate Past President
State Tax Commission of
Missouri
Jefferson City, MO 65102
(314) 751-1734

Bob Pirrie, RLS, PMM
Director
Pirrie & Associates, Inc.
2 W. Ste. Maries
Perryville, Missouri 63775
(314) 547-1771

Gary Drennan, PMM
Hood-Rich Architects &
Consulting Engineers
Director
801 South Glenstone
Springfield, Missouri 65802
(417) 862-4483



New officers, left to right, Jan Elliot, immediate Past President; Gail Sawicki, President; Bob Pirrie, Director; Don Cleveland, Vice President; Mary Ann Kaiser, Secretary; Gary Drennan, Director; Ken Eftink Treasurer.

The following board liaisons and committee chairpersons were appointed in a meeting of the Board of Directors following the convention:

Board Liaison	Committee	Chairperson
Bob Pirrie, PMM (314) 547-1771	Education	Bob Norris, PMM (314) 751-1733
Ken Eftink, PMM (314) 335-3790	Publication	Joe Martin (314) 335-3790
Don Cleveland (816) 842-0141	Membership	Rick Stuart (816) 582-7633
Gary Drennan, PMM (417) 862-4483	Certification	Stan Balsman, PMM (314) 547-8357
Mary Ann Kaiser (314) 443-1666	Annual Meeting	
Jan Elliot (314) 751-1734	Legislation	Robert Myers, PMM (314) 364-1752
Gail Sawicki, PMM (314) 583-8181	Awards	

We are looking for an individual to serve as chairperson for the Annual Meeting Committee and Awards Committee. If you are interested contact the Board Liaison for that committee. If you would like to get involved with any of the committees listed, just contact the committee chairperson. The more members we have involved, the better our association becomes.

LETTER FROM IMMEDIATE PAST PRESIDENT JAN ELLIOT

To all of the Missouri Mappers, I would like to thank you for letting me serve as your president for this past year. It has been an honor. The roses I received at the convention were beautiful and were very special.

I have seen this organization grow from the beginning. I am extremely proud of it and its members. I ask that you support our new president, Gail Sawicki, and her new board of directors.

Let's continue to grow and make our third year as successful as the first two!

EDUCATION COMMITTEE

The Map Compilation and Inking Workshop was held June 17-19, 1986, in Columbia, Missouri. Approximately 40 mappers from around the state attended and heard presentations by Jack McDermott, Division of Geology and Land Survey, and Gary Drennan, Hood-Rich Engineers and Architects.

The workshop began with an informative look at surveying history presented by Jack McDermott. This was followed with 18 hours of "Hands On" experience exercises on map compilation and inking. This was led by Gary Drennan.

This workshop was a success due to the willingness of both instructors and those attending to come together and work to improve their skills.

The education committee is looking for additional members. The only requirement is a desire to promote programs of interest to the association. Please contact Bob Norris at 314 751-1733 if you are interested.

Future workshops are in the developmental stage. Topics being considered are Flight Planning for New Aerial Photography, Trouble-Shooting-Problems and Solutions and additional workshops on inking. If you have any suggestions or preferences, let us know.



Mappers compiling information at workshop in Columbia

CONVENTION WAS A SUCCESS

MMA 2nd Annual Convention was a success. We had approximately 90 in attendance and 12 exhibitors.

The convention began with a banquet and entertainment by comedian Timothy Hays, Mayor of Whoopup, Monday night.

Tuesday program began with a welcoming statement by Jan Elliott. Followed by a presentation by Ed Crane. A slide presentation was shown which demonstrated the Wyandotte County, Kansas Land Record System.

The afternoon started with a MMA business meeting, which

included changes to constitution and election of the 1986-87 officers. This was followed by a concurrent session with Kenneth A. Libby, Macola, Inc. and Robert E. Myers, State Land Surveyor. Mr. Libby, presented a program on Digital Mapping in the "80's". Mr. Myers, gave a question/answer session on land surveys. The day concluded with the exhibitors area. We would like to extend a thank you to our exhibitors. They were; Drexel Supply Co., Griner & Schmitz, Inc., Intercart Digital Mapping Inc., M.J. Harden Asso., Inc., Houseman & Asso., Kucera International Inc., Matatron, Inc., Miller Asso., New Blue Print Inc., Seiler Instrument & Mfg., Surdex, Synercom Technology.

A delicious assortment of hor d'oeuvres was served complimented by a drawing of prizes.

Wednesday program began with a breakfast buffet. Followed by Missouri State Tax Commission Chairman, Ralph Smith. The program consisted of the background on how reassessment was initially started.

This was followed by a question/answer session which revealed some interesting items in regard to map maintenance Quality control, and mapping problems. The panel was composed of Robert Pirrie, William Brenner, Wm. H. Cohrs, Larry Hixson. Questions were varied and addressed to all participants. The convention was adjourned and everyone was wished a safe trip home.



Discussion panel from left to right Rick Stuart, Robert Pirrie, William H. Cohrs, William Brenner.



Interesting exhibits were provided by 12 different companies.



Members enjoying Deli Luncheon sandwich bar.

LAND SURVEYORS MEETING PLANNED

The Missouri Association of Registered Land Surveyors are having their annual meeting in Kansas City September 26th and 27th at the Americana Hotel. Some of the topics that will be presented are "The Old Surveyor", "The Client-Surveyor Relationship", "The Field Surveyor - Planning, Instrumentation and Procedure", "Certification and Liabilities", "Trail Preparation and Deposition". Registration for members is \$50.00 and for non-members \$60.00, Spouse registration is \$15.00. For more information call Sandra Boeckman, Executive Director, or write MARLS, 204 E. High Street, Jefferson City, Missouri 65101.

"THE LIGHT TABLE"

Rick Stuart sent me this confusing deed that was recorded in Nordaway County.

Deed 387 Page 161 Ten (10) acres of land, being so much of the Southeast One-fourth (1/4) of the Southwest Quarter (SW1/4) of Section Eight (8), in Township Sixty-five (65) North of Range Thirty-seven (37) West of the Fifth Principal Meridian lying East of the Nordaway River (as previously located).



If you have any interesting legal descriptions or surveys, please share them with us. We all enjoy reading the crazy legal descriptions someone else has to work with.

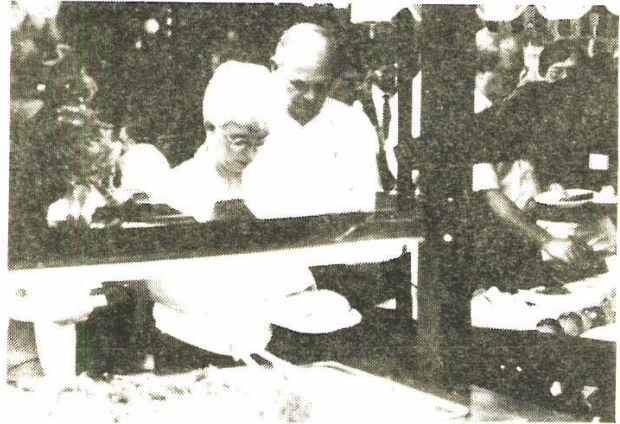
Send them to: Joseph D. Martin
44 N. Lorimer
Cape Girardeau, Missouri 63701



Gail Sawicki and Bob Pirre, receiving outstanding membership awards for their involvement in The MMA.

"IN APPRECIATION"

Thanks goes out to the Convention Committee for the excellent job they did on coordinating a successful convention this year. Who are: Mary Ann Kaiser; Convention Chairperson, Gail Balke, Don Cleveland, Dawson Heathman, Ivan Hewitt, Sylvian Schoeneberg, Piedra Volkart; Convention Committee. Also Thanks to the Exhibitors who helped to make this convention a success. Thanks to: Drexel Supply Company, Griner & Schmitz, Inc., Intercart Digital Mapping, Inc., M. J. Harden Associates, Inc., Houseman & Associates, Kucera International Inc., Manatron, Inc., Miller Associates, New Blue Print Inc., Seiler Instrument & Mfg., Surdex, Synercom Technology.



The food was good too. The committee did a great job.



Rusty Smith, Chairman Missouri State Tax Commission.



"Wyandotte County, Kansas Land Records System" by Ed Crane, Wyandotte County Surveyors Office.

INK TIPS

Do you have something in your office that helps you out or do you do something that saves you time? The publication committee would like to put your neat idea in our newsletter so we can all benefit from it. Send suggestions to: Joseph D. Martin, 44 N. Lorimer, Cape Girardeau, MO. 63701

PHOTOGRAMMETRIC ENGINEERING
COMPUTER GRAPHIC SERVICES

DON CLEVELAND
Client Consultant

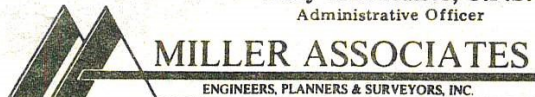
M.J. HARDEN ASSOCIATES, INC.
1019 ADMIRAL BOULEVARD
KANSAS CITY, MO 64106
816-842-0141
720 TROOST
KANSAS CITY, MO 64106
816-221-6190



SURVEYING INSTRUMENTS AND SUPPLIES
RENTALS • SALES • SERVICE
842 • 1433

RON HANSON

1701 BROADWAY
KANSAS CITY, MO. 64108



Mary Ann Kaiser, C.P.S.
Administrative Officer

MILLER ASSOCIATES
ENGINEERS, PLANNERS & SURVEYORS, INC.

Building 5, Suite 100
409 Vandiver Dr.
Columbia, MO 65202

(314) 443-1666



Bob A. Williams

13930 Manchester Road
Manchester, Missouri 63011

(314) 394-8886

KUCERA
AND ASSOCIATES, INC.

JOHN RADEBAUGH

photogrammetric consultants

7000 REYNOLDS ROAD
MENTOR, OHIO 44060
(216) 255-4700

BUSINESS CARD ADVERTISING

Don't forget to send us your card if you want it published in the next issue. This service is free to our members and is continuing to grow.

CHANGE YOUR ADDRESS

If you have moved recently, please let us know so you will get the MMA News on schedule. Send change of address notices to:

Ken Eftink, 44 N. Lorimer, Cape Girardeau, MO. 63701

FOR SALE/WANTED COLUMN

Members, do you have a piece of mapping equipment you have been wanting to sell or buy? If you do, we will advertise it for you in the MMA News free of charge. Simply let us know the name and type of equipment you are advertising along with your name and number. Send them to:

Joseph Martin, 44 N. Lorimer, Cape Girardeau, MO. 63701



MISSOURI MAPPERS ASSOCIATION

P.O. BOX 1692
JEFFERSON CITY, MISSOURI 65102



Don Cleveland
M.J. Harden Assoc., Inc.
1019 Admiral Blvd.
Kansas City MO 64106

RECEIVED
SEP 15 1986
M. J. HARDEN