

MMA NEWS

Missouri Mappers Association

PO Box 1692

Jefferson City, Missouri 65102

June 2003

Volume 19, Issue 3

MESSAGE FROM THE PRESIDENT

I would like to take this opportunity to express my sincere gratitude to all the MMA members for their support during my presidency.

I have had an excellent board to work with and the committee chairs have really responded to all I have asked of them.

I hope you are all planning to attend the 19th Missouri Mappers Annual Conference. The change in location should prove to be interesting and hopefully very rewarding.

Don't forget, there will be attendance prizes several times during the conference, so don't miss anything, and you could go home with a splendid new item for your home (possibly a cooler) or your car (possibly a flashlight). Anyway, we will have fun and also learn something from the great speakers that are lined up.

The two workshops should also prove to be enlightening, and I hope the attendance for them will be to the max.

Again, as outgoing president of MMA, I count it a pleasure and privilege to have served with such a wonderful organization.

SEE YOU AT THE BEACH!!!!!!!!!!

Submitted by,
Patty Williams
MMA President 2002-2003

INSIDE THIS ISSUE

Advertising
Committee Reports
Chapter News
19th Annual Meeting Registration
Golf Tournament Registration

CONGRATULATIONS

On April 30, 2003, Bill Crabtree Assessor in St. Clair County resigned his position in order to retire and play at his farm. Gladys Smith, who was his Deputy and Mapper for over 12 years, was appointed to replace him effective May 1, 2003. We, as a professional organization, wish to offer her the congratulations of the membership and to let her know how much we care about her.

INFO TECHNOLOGY COMMITTEE

Kevin Rasmussen has been busy periodically posting updates to the website as they are sent his direction. This is a great way for people to get the most up-to-date information concerning the annual meeting. He's also been posting current events in a timely manner and then taking them off after the time has passed. He has added the update date to the site so people can quickly scan it to see if any changes have been made to the website.

Christian Klaus, ITC member, has had a job change and has been unable to continue participation.

The four forwarding email links are in place, but we don't know how much traffic is being passed through them.

There has been no action to scan the newsletters into PDF format for inclusion on the website.

The ITC would like to see others step up to the plate to get some things accomplished on this committee next year. We still have lots of ideas, just not enough effort to get them all completed.

Submitted by,
Jennifer Peterson
Chairperson

CHAPTER NEWS

SOUTHWEST CHAPTER - May 15, 2003, the Southwest Chapter's scheduled meeting was hosted by the Meyers Map Library of Southwest Missouri State University. Jim Coombs, the Map Librarian, introduced the members present to the holdings of the facility. Mr. Coombs explained that the library contained a wide array of maps of various types and scales, from various sources and eras illustrating locations throughout the world. Navigational charts of coastal areas and some inland waters are available. Aerial photography and satellite imagery of various time periods is also held in the Map Library. Additionally, photocopiers are available as is a 3 foot copier/scanner, light tables, and stereoscopes. He went on to say that these resources and services are available to all who require it. Any fees charged are very reasonable. Most materials can be checked out under "The friends of the Library" program. The library's website is <http://library.smsu.edu/meyer/maps/index.shtml>. Jim is a most commendable host and we thank him greatly.

Briefly, Richard, Jacque and Henry discussed some of the pros and cons of ESRI products and Autodesk Map. It was pointed out that each had strong points which suited them to specific tasks that the other is best well suited for. Cost comparisons were made which also limits choices in the purchase of the mapping products.

Even more briefly (parking meters about to expire), a discussion of recent tornadic events ensued. Several members were affected to some extent. We all agreed nature's urban/rural renewal program leaves much to be desired and further such events are hereby discouraged. Our hearts go out to all those hurt by these storms. For a look at the tornado tracks being discussed, check out the following site:

http://www.crh.noaa.gov/sgf/Events/2003may4tornado/tor_paths_050403.shtml

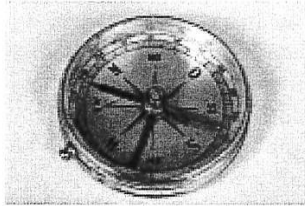
Submitted by,
Henry Gebelin
SWMMA Secretary/Treasurer

CENTRAL EAST CHAPTER- The Central East Missouri Mappers Association (CEMMA) held its quarterly meeting June 11, 2003, in Wright City at the City Park. About 18 members were in attendance for the Annual Barbecue. Even though it rained, with the protection of a pavilion, the barbecue was a success. Members enjoyed ribeye steak sandwiches, chicken, salads, chips, dessert and soda. The program consisted of a new game called Mapping Jeopardy, which put the mappers to the test of their knowledge. The next meeting will be held at the MMA Annual Conference.

Submitted by,
Patty Williams
Warren County

WEST CENTRAL CHAPTER- The West Central Chapter of Missouri Mappers Association will meet at the Annual Meeting on July 31, 2003. Please have someone in mind to nominate as chairperson for the upcoming year.

Submitted by,
DeAnna DeJarnette



What happens when our GIS solutions don't work out?

Honestly, we wouldn't know.

Since the company was formed in 1927, Sidwell has mapped more than *7 million* parcels of land. We maintain the most experienced staff in the business, with an average 11 years per employee. We've been on the leading edge of GIS technology for more than 20 years, and we're dedicated to making sure our products and services are positioned to carry our customers far into the future. With experience and expertise like this, we can guarantee our GIS solutions will work for your jurisdiction for a *very long time*. To find out how we can help you, call 630.549.1000, or visit our website at www.sidwellco.com.



GIS & Mapping Solutions

**675 Sidwell Court
St. Charles, Illinois 60174
630.549.1000
www.sidwellco.com**

COMMITTEE REPORTS

ANNUAL MEETING COMMITTEE

Plans for the 19th annual meeting are complete (See the agenda and workshop application for details) and will be located at the Holiday Inn Sun Spree Resort at Lake Ozark, Missouri. The theme of the meeting will be "*Mapping is a Beach*" complete with Hawaiian Luau decorations and attendance prizes. Feel free to dress in your colorful Hawaiian print shirts! Registration includes a continental breakfast, lunch buffet, and a sunset cruise on the lake following by a Hawaiian Luau dinner on Thursday. Friday's sit down breakfast is also included.

Additional activities on Wednesday include a Golf Tournament at Bear Creek Valley beginning at noon and an exhibitor social from 7:00 p.m. to 9:00 p.m. Be sure to attend the exhibits throughout the conference as the vendors have valuable information and advice to offer. They also have the latest and greatest techniques, programs and services on interest to the mapping community.

Two workshop are offered. A full-day addressing workshop will be taught by Tim Haithcoat. Larry Bollinger, PLS, will instruct a half-day basic mapping techniques workshop.

Eight guest speakers will fill the day on Thursday, followed by PMM and chapter meetings. Bring your questions and problem deeds, as there will be ample opportunity to ask questions of the experts.

For registration forms, agendas, and additional information go to

<http://www.missourimappers.org/meetings.html>

Submitted by,
Belinka Novotny-Held, PMM
Chairperson

AWARDS COMMITTEE

At this time, award recipients have been selected, the awards themselves have been ordered, and we are just waiting for August 1 to roll around so we can present the awards to some very deserving MMA members. See you at the lake!

Submitted by,
Alice Lee
Chairperson

LEGISLATION COMMITTEE

A very active session passed only one piece of legislation which positively affects some county assessors. The Technology Fund (SB 99 and HB 139) which was of interest to mappers, made it through both the House and Senate Committees as a do-pass, but it failed.

Submitted by,
Darrel King
Chairperson

MEMBERSHIP COMMITTEE

There are currently 241 members with 65 counties in Missouri Mappers Association. Hopefully this will go up with Annual Meeting Registrations coming in.

Submitted by,
Gladys Smith
Chairperson

EDUCATION COMMITTEE

With the two workshops being offered at the Annual Meeting, the education committee has determined that this is probably the best time for education programs. If anyone has any ideas for this committee, please see me or one of the committee members at the Annual Meeting.

Submitted by,
Kevin Kuhlmann
Chairperson

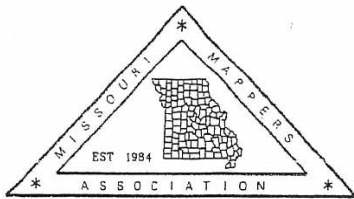
PUBLICATION COMMITTEE

ADVERTISING PRICES

Business Card	3 issues	\$ 25.00
Less than ¼ Page	3 issues	\$ 50.00
¼ Page Ad	3 issues	\$100.00
½ Page Ad	per issue	\$ 50.00
Full Page Ad	per issue	\$100.00

I would like to take this opportunity to thank everyone for their cooperation during my time as publications chairperson. I will not be handling the newsletter next year, but will be glad to help my successor in anyway (except publication) that I can. I have had fun doing the newsletter, but am beginning to experience burnout, so feel I should quit while I'm still feeling good about the work I've done.

Submitted by,
Marti Suiter, PMM
Chairperson



Missouri Mappers Association 2003 Annual Meeting Workshop

Addressing Workshop

Wednesday, July 30, 2003

Holiday Inn SunSpree Resort, Lake Ozark, Missouri

Meeting Room D

\$30.00 fee – see attached registration form

Presented by: Tim Haithcoat, Program Director, Sr. Research Specialist, University of Missouri-Columbia, Geographic Resources Center / Missouri Spatial Data Information Service

Tim has over 19 years of implementation experience in the integration of geographic information technologies (GIS, remote sensing, GPS) for providing information to decision makers. He is a standing member of the Missouri GIS Advisory Committee and also is chair of the MidAmerica GIS Consortium (MAGIC). Tim is also very active within the National States Geographic Information Council (NSGIC).

One of the most significant elements of local government database construction is the capture, storage, and use of local addresses. This all-day, lecture style, short course will cover design issues of both master address and street centerline files. This program will provide: conceptual definitions for both types of files, major design components, generic database structures for both the graphic and non-graphic data files, map maintenance and display, and the relationship of a master address file to a street centerline file. It will also review Missouri's draft Addressing Standard. Please come prepared to participate in an interactive discussion with anecdotal material to provide a better understanding of what REALLY is going on out there in the world of addresses on the street and the nuances of modeling them in digital databases.

Course Outline:

9:00	Introduction to course and instructor
9:15 – 9:45	The context of addresses and addressing systems
9:45 – 10:30	Addressing systems, grids, and jurisdictional boundaries
10:30 – 10:50	Break with refreshments
10:50 – 12:00	Working with Addresses
12:00 – 1:00	Lunch on your own
1:00 – 1:45	Addresses and the GIS Data Model
1:45 – 2:30	Implementing an Addressing Program
2:30 – 2:50	Break with refreshments
2:50 – 3:30	Missouri Addressing Draft Standard review
3:30 – 4:00	Review of Appendices and wrap-up
4:00	Adjourn

Basic Mapping Techniques

for

Missouri Mappers Association – 19th Annual Conference

July 30, 2003 (1:00 p.m. to 4:00 p.m.) – Room A, Holiday Inn SunSpree

\$20.00 fee – see attached registration form

Larry L. Bollinger, Survey Office Manager, Saint Louis County, Dept. of Hwy. & Traffic
Mr. Bollinger currently serves as Survey Office Manager for the Saint Louis County Highway Department's Construction Division and Survey Section. He has had a distinguished career in the Land Survey profession.

Course Outline:

- ❖ Introduction
 - Mapping in general: Please bring scales, triangles, pencil, paper and calculator.
- ❖ Mapping Scales
 - Numerical scale or representative fraction, Graphic scale, Verbal scale, Scale conversion, Engineer's scale
- ❖ Map location
 - Latitude and longitude
 - Coordinates
 - Local, State plane
- ❖ Map direction
 - North
 - Assumed, Geodetic (True), Magnetic, Grid
 - Bearings
 - Azimuths
 - Angles
- ❖ General Land Office (GLO) Surveys/Maps
 - Introduction
 - Township
 - Sections
 - Subdivision of, GLO descriptions
- ❖ Practical Exercise
- BREAK (2:30- 2:45)**
- ❖ Mapping symbols
 - Cultural
 - Relief
 - Contours
 - Colors
 - Water
 - Vegetation
- ❖ Subdivision Plats/Maps
 - Drawing
 - Lots Blocks, etc. defined/created
 - Monumentation, called for
 - Scripts
 - Owners
 - Name of subdivision
 - Restrictions
 - Dedication of streets
 - Easements
 - Surveyors
 - Missouri standards requirement
 - Deed of trust holder(s)
 - Approving authority(s)
- Recording of
- ❖ Right-of-Way Plats/Maps
 - Roadway
 - Ownership as fee of easement
 - Jurisdictional Concerns
 - State, County, City, Private, etc.
 - Stations
 - Curve nomenclature
 - PC, PI, PT, degree of curve, R, L etc.
 - Utilities/Easements
 - Railroads
- ❖ Map Projections
 - State Plane Coordinate System
 - Missouri Coordinate System of 1983
 - Defined in Chapter 60.401 thru 60.491 of the Missouri Statutes
 - NAD27
 - Older system
 - NAD83
 - Newer system
 - Ground control for aerial mapping
 - Used to define boundary corners
 - Used for GIS applications
 - Benefits of a common datum
 - Various (but defined) accuracies
- ❖ Practical Exercise

MMA ANNUAL GOLF TOURNAMENT
BEAR CREEK VALLEY GOLF COURSE

Starting time: 12:00 Noon/Shotgun Start

Cost: \$44.50 per person/ includes green fees, carts and range balls

Prizes will be awarded that evening at the exhibitors' social

Team Prizes

Putting Contest

Closest to the Hole

Longest Drive

This golf course is very challenging so bring lots of golf balls, but we will have a great time on a beautiful golf course. Get your teams together and send in your registrations today.

We are again looking for donated prizes this year. So if you are willing to provide a prize, please let me know. The Wal-Mart gift certificates worked great last year. Call me and let me know if you can donate.

Alcohol is allowed on the course, but must be purchased from the pro shop. No coolers are allowed. Due to the cost of the tournament, lunch will be on your own.

Respectfully submitted,

Jim Kyle

417-357-0363



MMA ANNUAL GOLF TOURNAMENT
BEAR CREEK VALLEY GOLF COURSE
JULY 30, 2003 @ 12:00 NOON

ENTRY FORM: If you do not have a team just list your name and we will pair you with one.

Player_____

Player_____

Player_____

Player_____

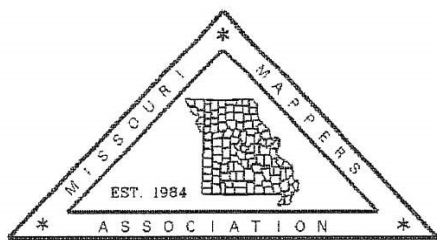
Make checks payable to: Missouri Mappers

Send checks and entry form to: Jim Kyle

26302 St. Hwy. 413

Galena, MO 65656

Directions to the Golf Course: From the Holiday Inn Sunspree, turn right out of the parking lot back to 54 Hwy. Turn right on 54 towards town and go to the first stoplight, Hwy 42, and turn left. Go a quarter of a mile and the course is on your left.



Missouri Mappers Association

19th Annual Conference
July 30, 31, & Aug 1, 2003

The Annual Meeting Committee cordially invites you to attend the 19th Annual Missouri Mappers Association Annual Convention at the Holiday Inn SunSpree Resort in Lake Ozark, Missouri. A golf tournament and two workshops are planned for Wednesday. Thursday will be filled with presentations covering traditional mapping techniques and GIS methods and issues, followed by a sunset cruise on the lake. Registration includes a continental breakfast, lunch, and dinner on Thursday and breakfast on Friday.

Please complete and return this registration form before July 11, 2003. A late fee of \$15.00 will apply to all forms received after this date.

Name: _____ Title: _____

Employer/Firm: _____

Address: _____ City/State/Zip: _____

Phone: _____ Email: _____

Registration Fees (includes MMA dues)	\$100.00	After 7-11-03 \$115.00
Annual Dues Only (for non attendees)	\$ 15.00	
West Central Chapter Dues	\$ 5.00	
Addressing Workshop (Space limited)	\$ 30.00	
Afternoon Workshop (Space limited)	\$ 20.00	

Additional meal tickets may be purchased by request.

Total Registration Fees: \$ _____

Please make checks payable to **Missouri Mappers Association**

Hotel Reservations: A special rate of \$88.00 (plus \$2.00 resort fee and a 3% room tax) per night is available for MMA conference attendees. For reservations, call the Holiday Inn SunSpree Resort at 1-800-532-3575. Be sure to mention the Missouri Mappers Association when making your reservations.

Send registration form and payment to:

Belinka Novotny-Held

9801 Held Rd

Hillsboro, MO 63050

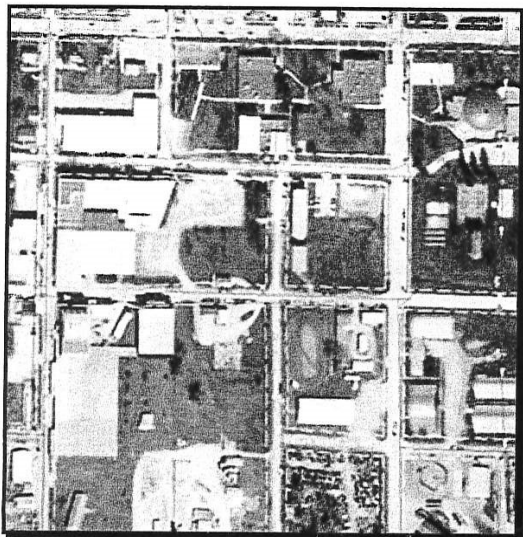
(636)797-5467

Fax: (636)797-5470

email: belinkaheld@yahoo.com

Midland GIS Solutions

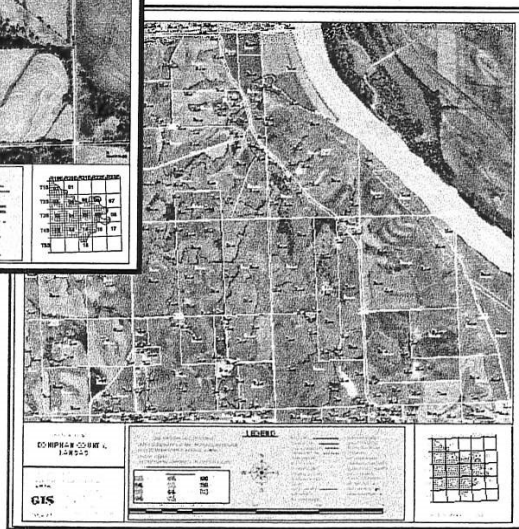
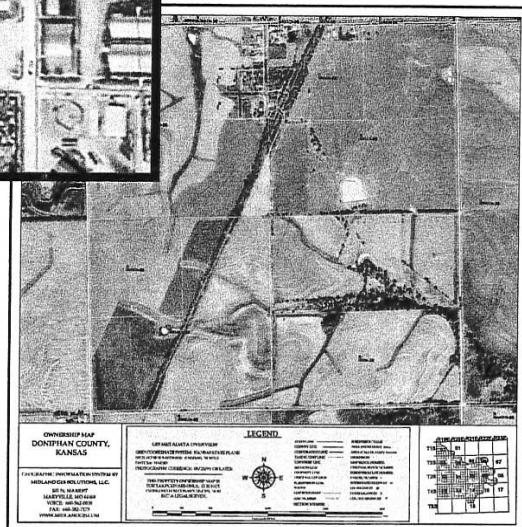
... delivering a world of management information



- County Government
- Municipal Government
- Private Business
- Regional Associations
- Institutions
- Transportation
- Homeland Security



- GIS Development
- Cadastral Mapping
- Utility Mapping
- Custom Mapping
- Parcel Data Conversion
- AM/FM
- Needs Assessments
- Grant Writing
- GPS Services
- Professional Land Surveying



For all your GIS and mapping needs!

MIDLAND
GIS
SOLUTIONS

Midland GIS Solutions

501 N Market
Maryville, MO 64468
(660) 562-0050
www.midlandgis.com

113 Greystone Lane
Sunrise Beach, MO 65079
(573) 374-0885
info@midlandgis.com

Toll Free: 877-375-8633

MIDLAND
SURVEYING
Business Partner



MMA CALENDAR OF EVENTS

July 30-Aug1, 2003-

Annual MMA Conference at Lake of the Ozarks

July 30, 2003 - 9:00 am - 4:00 pm

Addressing Workshop

July 30, 2003 - 1:00 pm - 4:00 pm

Intro to Manual Mapping Workshop

KUCERA INTERNATIONAL INC.



**Providing high quality, cost-effective aerial mapping
services to Missouri counties and cities.**

Aerial Photography

Digital Orthophotography

Ground and Airborne GPS/IMU

Digital Planimetrics/Topography

LIDAR

GIS Conversion and Support

Digital Terrain/Elevation Models

Cadastral Mapping

38133 Western Parkway
Willoughby, Ohio 44094
(440) 975-4230. F(440) 975-4238
map@kucerainternational.com
www.kucera-gis.com



MMA NEWS

%Marti Suiter, PMM

Hickory County Assessor's Office

P.O. Box 97

Hermitage, MO 65668