



# MMA NEWS

**Missouri Mappers Association**

**P.O. Box 1692**

**Jefferson City, Missouri 65102**

**Volume 13, Issue 4**

**October 1997**

## PRESIDENTS REPORT

As we wind down another year (1997), I hope everyone is caught up with their work and enjoying life in general.

Here in Hickory County, we are unofficially celebrating a year of indoor restrooms and un-crowded conditions after an addition was built onto the courthouse in 1996. As you can see from the pictures, the mapping office has doubled in size from just a year ago. It really is nice not to be filing in the hallway (where three of our files and our mylar cabinet stood for quite some time).

I want to thank the Annual Meeting Committee for a superbly organized meeting this year, and to all those who didn't make it to the meeting, we missed you and hope you can be there next year.

A list of Committee members (with chairperson listed first) and telephone numbers is listed on page 2. I would like each committee to develop a goal and submit it to me sometime before April 1998. I feel this will aide communications between board members, committee members and the general membership.

Please feel free to contact me either at my work number (417) 745-6346 or at my home number (417) 852-7256 if you have any questions.

Marti Buckner  
President MMA

*Pictures on page 3*

## INSIDE THIS ISSUE

- 1** Presidents Report
- 2** 1997-98 Committee Members
- 3** Committee Reports
- 4** Announcements

## WHAT'S NEW

*Submitted by: Carl Sohn Franklin County, from the Nebraska GIS Update July 1997.*

### Search for Air Photos on the World Wide Web

Aerial Photographs from the National Aerial Photography Program (NAPP) can now be searched and ordered through the Global Land Information System (GLIS). GLIS can support online queries, identify photographs covering specific areas of interest, display maps outlining the area covered by each photograph, and create orders from the photographs selected.

NAPP photography, flown at 20,000 feet is available for the 48 conterminous States, with photographs starting in 1987. Each image covers an area of about 33 square miles. Most of the photographs are in black and white, with some areas in color infrared.

GLIS searches for NAPP photography can be made by identifying a geographic area on a map, by typing in latitude and longitude coordinates, or by entering a US Place Names feature name. Acquisition date and film type may also be specified. The inventory search results will list all photographs meeting the entered criteria. If a date is not specified, the results will include all of the photography flown over that area with the most recent listed first. Detailed information, which can be viewed for each photograph listed, includes an outline of the area covered shown on a map background, film type, acquisition date, and roll and frame number. EROS Data Center (EDC) plans for enhanced map background graphics in the near future include the 1:100,000-scale transportation, hydrography, and boundary layers.

Customers placing orders for NAPP photographs through GLIS will be contacted for credit card information. Customer assistance in ordering is available from EDC Customer Services at (605) 594-6151. The fax number is (605) 594-6589. e-mail can be sent to [cust-serv@edcmail.cr.usgs.gov](mailto:cust-serv@edcmail.cr.usgs.gov).

The Internet address for NAPP on GLIS is <http://edcwww.cr.usgs.gov/webglis>

## **MMA 1997- 98 COMMITTEE MEMBERS CHAIRPERSON LISTED FIRST**

### **Annual Meeting:**

Ken Agey	(816) 889-1129
Judy Logan	(573) 422-3540
Belinka Novotny-Held, PMM	(314) 797-5467
Kay Schenewark	(816) 438-5323
Carol Misener	(314) 583-6389
Loyola Vondera, PMM	(314) 583-6390

### **Awards:**

Tereas Barns	(573) 886-4262
Stephanie Trejo, PMM	(417) 468-4184
Belinka Novotny-Held, PMM	(314) 797-5467
Linda Miller	(573) 674-2369

### **Certification (must have PMM designation):**

Jeff Davis, PMM	(573) 886-4262
Tim Houtchens, PMM	(417) 546-7242
Stan Balsman, PMM	(573) 547-8357
Linda Crane, PMM	(573) 886-4262
Loyola Vondera, PMM	(314) 583-6390
Belinka Novotny-Held, PMM	(314) 797-5467

### **Education / CADD:**

Ryan Pulis	(816) 889-1158
George Yerion	(314) 869-1223
Stan Balsman, PMM	(573) 547-8357
Barbara Kaszuba, PMM	(417) 451-8229

### **Legislative:**

Ivan Hewitt	(816) 324-3023
Ona Mullinax	(417) 682-3553
Joe Ferris	(816) 485-6312
Gene Buis	(816) 425-2313
Betty Dykes	(816) 726-5289

### **Membership:**

Gladys Smith	(417) 646-8880
Linda Crane, PMM	(573) 886-4262
Stephanie Trejo, PMM	(417) 468-4184
Loyola Vondera, PMM	(314) 583-6390
Carmen Bennett	(816) 539-3716

### **Publication:**

Ken Agey	(816) 889-1129
Sheila Dyer	(816) 881-4561
Sandy Estes	(816) 233-8716
Carmen Bennett	(816) 539-3716
Belinka Novotny-Held, PMM	(314) 797-5467

### **Historical:**

Barbara Kaszuba, PMM	(417) 451-8229
Kathy Edwards, PMM	(314) 583-6389
Carl Sohn, PMM	(314) 583-6389
Georgia Spurgeon	(573) 422-3540

### **Joint CO-OP:**

Randy Mayden	(816) 889-1114
Barbara Kaszuba, PMM	(417) 451-8229
Dan Reece	(314) 949-7900

## **Quote of the Quarter**

Editor's note: This was passed to us after floating through a few Internet message groups. The author is unknown.

A New Orleans lawyer sought a FHA (Federal Housing Administration) loan for a client. He was told that the loan would be granted if could prove satisfactory title to a parcel of property being he offered as collateral.

The title to the property dated back to 1803, which took the lawyer three months to track down. After sending the information to FHA, he received the following reply:

"Upon review of your letter adjoining your client's loan application, we note that the request is supported by an Abstract of Title. While we compliment the able manner in which you prepared and presented the application, we must point out that you have only cleared the Title to the proposed collateral property back to the year 1803.

Before final approval can be accorded, it will be necessary to clear the title back to its origin."

Annoyed, the lawyer responded as follows:

"Your letter regarding Titles in Case No. 189156 has been received. I note that you wish to have Titles extended further than the 194 years covered by the present application. I was unaware that any person in this country, particularly those working in the educated property arena, would not know that Louisiana was purchased by the U.S. from France in 1803, the year of origin identified in our application.

"For the edification of uninformed FHA bureaucrats, the title to the land prior to U.S. ownership was obtained from France, which had acquired it by Right of Conquest from Spain. The land came into possession of Spain by Right of Discovery made in the year 1492 by a sea captain named Christopher Columbus, who had been granted the privilege of seeking a new route to India by the then reigning Monarch, Isabelle.

"The good queen, being a pious woman and careful about titles, almost as much as the FHA, took the precaution of securing the blessing of the Pope before she sold her jewels to fund Columbus' expedition. Now the Pope, as I'm sure you know, is the emissary of Jesus Christ, the Son of God. In addition, God, it is commonly accepted, created this world. Therefore, I believe it is safe to presume that He also made that part of the world called Louisiana.

"Now, may we have our danged loan?"

*Summit your deeds, titles or other items for review, we will print the best of the quarter in the next issue of MMA News. Thanks to all who sent in items.*

## AWARDS COMMITTEE

The Awards Committee presented awards on August 22, at the Thirteenth Annual Meeting. These awards were presented to:

**FIREBALL – BELINKA NOVOTNY-HELD, PMM**

**MAPPER OF THE YEAR- MORGAN COUNTY MAPPING DEPARTMENT**

**ANNUAL MEETING- LINDA CRANE, PMM & ONA THOMAS MULLINAX**

The members of the Award Committee would like to congratulate these winners. We are looking forward to next years Annual Meeting to see who will be honored with one of these awards for 1998.

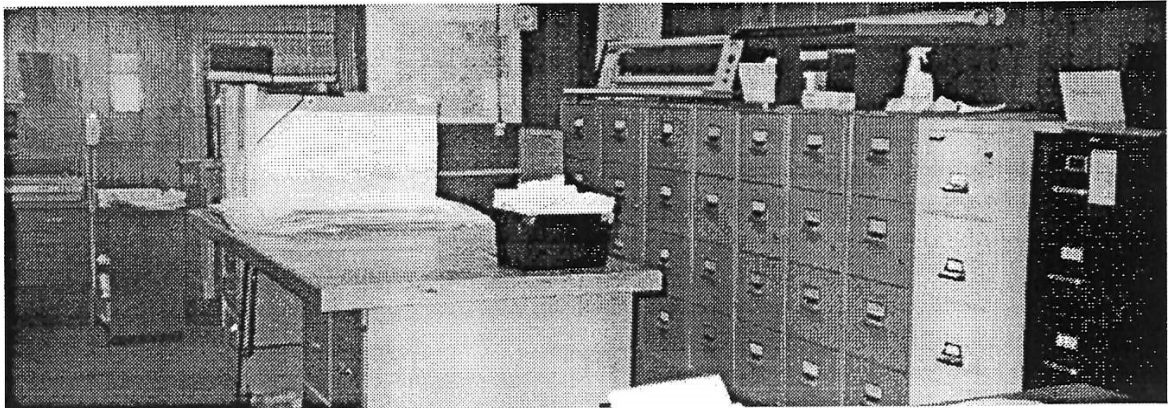
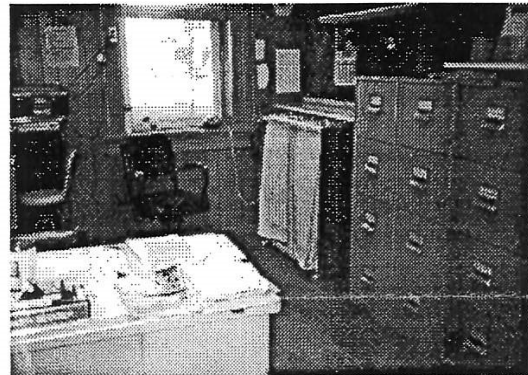
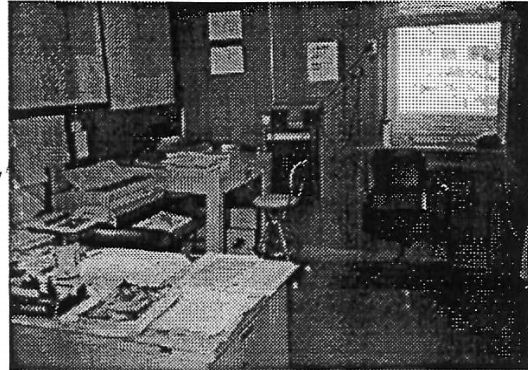
Stephanie Trejo, PMM

Awards Chairperson for 1997

On behalf of the MMA Awards committee, I would like to thank everyone for their time and effort it took to research and confirm the recipients who have received special awards since 1987. A special Thank you to Stephanie Trejo for the remarkable job compiling the records. It will make my job so much easier.

Sincerely,

Teresa Barnes, Awards Chairperson



## TO MMA: THOMAS JEFFERSON

A DECALOGUE OF CANONS FOR THE OBSERVATION IN PRACTICAL LIFE: -

1. Never put off till to-morrow what you can do to-day.
2. Never trouble another for what you can do yourself.
3. Never spend your money before you have it.
4. Never buy what you do not want, because it is cheap; it will be dear to you.
5. Pride costs us more than hunger, thirst and cold.
6. We never repent of having eaten too little.
7. Nothing is troublesome that we do willingly.
8. How much pain have cost us the evils which have never happened.
9. Take things always by their smooth handle.
10. When angry, count to ten, before you speak: if very angry, an hundred.

First written by Thomas Jefferson in 1825, at age 81, to Thomas Jefferson Smith. Presented in the City of Columbia, Missouri, this 22<sup>nd</sup> Day of August, 1997.

Summer, 1997



"Sorry, Dear, but I can't direct you any further.  
We went off the map an hour ago."

## Announcements

### Advertising

*Don't forget, your business card or digital artwork can be published in the next three issues of the MMA News. The Cost is only \$25.00! Please send your business cards, comments or corrections to: Ken Agey 1019 Admiral Blvd. Kansas City, MO 64106*

### Change of Address

*If you have moved recently, please let us know so you will get the MMA News on schedule. Send change of address notices to: Ken Agey 1019 Admiral Blvd. Kansas City, MO 64106*

### ARTICLES for the NEXT ISSUE

SEND YOUR MMA ARTICLES (MS WORD or other digital format would be helpful but not mandatory) to Ken Agey by January 10, 1998. Thanks to those who helped produce this newsletter.

We need pictures from the Annual Meeting. I will return them.

### KUCERA INTERNATIONAL INC.

COMPLETE, PROFESSIONAL, COST-EFFECTIVE, IN-HOUSE  
MAPPING, GIS, AND IMAGING SERVICES

- |                           |                      |
|---------------------------|----------------------|
| ♦ AERIAL PHOTOGRAPHY      | ♦ DATA CONVERSION    |
| ♦ SATELLITE IMAGERY       | ♦ CADASTRAL MAPPING  |
| ♦ GROUND AND AIRBORNE GPS | ♦ E911               |
| ♦ ORTHOPHOTOGRAPHY        | ♦ UTILITY SURVEYS    |
| ♦ PHOTO BASE MAPPING      | ♦ GIS IMPLEMENTATION |
| ♦ TOPOGRAPHIC/DTM MAPPING | ♦ GIS APPLICATIONS   |
| ♦ IMAGE PROCESSING        |                      |



Your window to the world

*Have performed photography and photo base mapping covering over 50 Missouri counties*

Headquarters:  
38133 Western Parkway  
Willoughby, OH 44094  
Phone: 216-975-4230  
Fax: 216-975-4238  
E-Mail: Kucera Int@aol.com

Midwest Regional Sales Office:  
Glen Buckland, Technical Rep.  
Phone: 314-625-4614



## JACKSON COUNTY MAPPING —THE EVALUTION—

The mapping department of Jackson County was created around 1970. A private engineering firm created the original Orthophotos and lines overlays that are being used as the ownership maps for the mapping department. The county has been re-flown twice since 1970 and these ownership maps have been the basis for all the mapping workflow within the county right up to this time.

In 1986, the mapping environment needed to progress forward. A GIS system was proposed as being the foundation for the future. In 1988, the contract for a GIS system was started out in the VAX environment with a little MICRO II. All the digitizing was to be done in house with 2 shifts with 5 operators. Estimated time frame was 5 years. Unfortunately the 2 shifts lasted less than 1 year and at times we operated with just 1 operator we currently have around 1600 maps at scales of 1"=100' and 1"=200'. It was determined that we would run a manual side along with a CAM side until all the maps were digitized. This CAM program was to be completed in three stages. The first stage was to complete all digitizing. The second stage was database linkages and editing, the third stage being edge matching. At the completion of this stage production was to be all computerized, thus ending most of the drafting on worksheets and my favorite inking those changes onto mylar overlays for the updating of the Jackson County tax rolls.

The year 1993 brought another change in the GIS environment. The VAX system was replaced by MicroStation on CLIX InterPro 2020's. We dropped the DEC environment while moving into the Unix environment. New workstations as well as new software products were all installed. This is what Jackson County is currently using.

We completed all the digitizing in February 1997. Almost 8 years went by before the maps were digitized. This includes a simple database linkage for every parcel in Jackson county (approx. 260,000 parcels). This is our first year for using the cam system for digitizing all new plats/surveys and splits/combines for our mapping department. We are trying to come up with new procedures for the workflow in the mapping department. To this date, this is quite a challenge within itself.

The year 1998 will bring another change to our department. We will be again upgrading our CAM system. We are going to a PC environment with Windows NT. We are also combining our system with our MIS department. The MIS Department will migrate from their oasis software package to a CAMA (computer aided mass appraisal) software package. Therefore, by 1999 we hope to have a GIS/CAMA package up and running in Jackson County. We are also hoping in the near future to be able to have *digital* orthophotography and to have our Intranet and Internet up and running.

So if you hear a rumbling around the state of Missouri within the next two years keep calm, it's not the new Madrid fault becoming active, it's Jackson county trying to implement our new system.

Sheila Dyer  
Cartographer

## WALKER ASSOCIATES, INC. ANNOUNCES NEW APPOINTMENTS AND EMPLOYEE PROMOTIONS

For Immediate Release

Tuesday, May 6, 1997

### WALKER ASSOCIATES, INC.

St. Louis Headquarters  
16 50 Headland Drive  
St. Louis, MO 63026  
(314) 343-6111  
(314) 343-6451 Fax

Chicago Regional Office  
1851 Wilson Place  
Arlington Heights, IL 60004  
(847) 788-1060  
(847) 788-1009 Fax

St. Louis – Walker Associates, Inc. an Aerial Photography and Photogrammetric Mapping firm is pleased to make the following appointments and promotions to our professional staff.

Kim Swisher has joined the firm as Project Manager. Ms. Swisher has been active in the photogrammetric field since 1990 and will focus her efforts on customer service and stock photography sales. Ms. Swisher will also coordinate proposal preparation and marketing.

Marty Campbell has joined the firm as a Senior Level Stereo Compiler. Mr. Campbell is a 1992 graduate of Southeast Missouri State University, and is experienced with working on Zeiss P-1 and P-3 Analytical Stereoplotters.

Joyce Nicholas has been promoted to Office Manager. Ms. Nicholas has been with Walker Associates since 1994, and is a graduate of Southeast Missouri State University. Ms. Nicholas will handle the business accounting and track project costs.

Randy Pigg has been appointed Flight Operations Director and Project manager. Mr. Pigg holds a BS in Aeronautics from Parks College. Mr. Pigg will manage several key accounts in the Coal and Mining Industry.

Ron Teare has been promoted to Chief Photogrammetrist. Mr. Teare will be responsible for Survey Control Planning, Analytical Triangulation and special projects. Mr. Teare has been with the firm since 1982. Mr. Teare will be the lead consultant for implementing Softcopy Plotters.

Ted Stanton has been promoted to Digital Services Manager. Mr. Stanton will be responsible for Graphic Editing, Orthophoto Production and Image Processing. Mr. Stanton is a 1989 graduate of Southwest Missouri State University.

Dale Verges has been appointed Manager of Image Reproduction and Scanning. Walker Associates, Inc., recently installed the Wherli RM-1 film scanner and Mr. Verges will be instrumental in the scanning operations. Mr. Verges is also the lead consultant for converting the photographic laboratory from analog-filing to scanning/digital reproduction.

For more information call Walker Associates, Inc.: Sandy Fowlkes, President or Bob Williams, Vice President in St. Louis, Missouri at (314) 343-6111.



1235 Swift Avenue  
N. Kansas City, MO 64116

The Source For All Your Surveying, Mapping & Data Acquisition Needs!  
"Service" "Sales" "Support" "Rental" "Training"

TEL: 816-221-1328  
TEL: 800-221-7400  
FAX: 816-221-2719  
FAX: 800-221-7870

LAT 39-07-56.26283  
LONG 094-34-37.42640

ATLANTIC  
Technologies



Corporate Headquarters  
2227 Drake Avenue SW, Bldg. 14  
Huntsville, AL 35895-5146  
256-862-7782  
FAX 256-862-7774  
www.atlantictech.com

Connie E. Bader  
167 Lamp & Lantier Village  
Suite 293  
Crestfield, MO 63017-4208  
314-207-8080  
FAX 314-207-1057

ASIAL  
PHOTOGRAPHY  
GPS SURVEY  
AERIAL GPS  
DIGITAL  
PHOTOGRAMMETRY  
DIGITAL CARTOGRAPHY  
GIS



Calcomp, ESRI ArcView,  
Plus 3 TERRAMODEL, Nikon

Susan F. Yerlon  
(314) 869-1223



Productivity Solutions for  
Architects, CAD/GIS, Engineers & Surveyors



Dynamic Geographic  
Technologies, Inc.

28 North 8th Street, Suite 100  
Columbia, Missouri 65201

Phone (573) 874-3484  
Fax (573) 815-0031  
sonny.s.dgt@pobox.com

Luther W. "Sonny" Sanders, Jr.  
President

BRYAN E.  
BOWERS, P.E.

HERYAN<sup>TM</sup>  
COMPUTING

HERYAN COMPUTING, INC.

P.O. Box 1305-4  
SCOTT CITY, MISSOURI 63780  
(314) 894-1825 St. Louis  
(573) 264-3481 Scott City  
(573) 264-3517 Fax  
71201, 1056 Compuserve

CAD, GIS and  
Civil Engineering

St. Louis

GLEN BUCKLAND  
Mid-West Regional Manager  
806 Briarwood Court  
Lake St. Louis, MO 63367  
314-825-4514

KUCERA International, Inc.  
PHOTOGRAMMETRIC CONSULTANTS

38133 Western Parkway  
Wiloughby, OH 44094-7589  
Telephone (216) 975-4230  
FAX (216) 975-4238

Offices:  
Cleveland • Pittsburgh • Denver • Atlanta • Orlando • Columbus



PHOTOGRAMMETRY  
IMAGE PROCESSING  
GIS IMPLEMENTATIONS

Randall L. Mayden  
Project Consultant  
Photogrammetry Division

1019 Admiral Boulevard  
Kansas City, MO 64106

Tel: (816) 889-1114  
Fax: (816) 471-1599  
E-mail: rmayden@mjharden.com



Timothy L. Haithcoat  
Program Director  
Missouri Spatial Data Information Service  
18 Stewart Hall  
Columbia, Missouri 65211

PHONE (573) 882-2324  
FAX (573) 884-4739  
DIRECT gretch@sbowine.missouri.edu  
University of Missouri-Columbia



ANDY J. CANZIANI  
SALES MANAGER

5301 HAMPTON AVENUE, ST. LOUIS, MO 63109  
(314) 832-2091 (314) 832-9423 FAX

SBP

SPRINGFIELD BLUE PRINT & PHOTOCOPY CO., INC.  
SINCE 1930

PHILIP ARNOLD  
Sales Representative

Tel. 417.869.7316  
800.458.9731  
800.999.2510  
Fax 417.869.2218  
E-Mail parnold@spblue.com  
Web www.spblue.com



INSTRUMENT & MANUFACTURING COMPANY

35 Kirkham Industrial  
St. Louis, MO 63119-1791  
314-988-2282

1-800-489-2282  
fax: 314-988-9217  
email: survey@seilerinst.com

Rob Rasnic



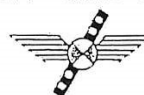
Aerial Photography  
• Topographic Mapping  
• Image Processing  
• GIS Base Mapping

Kim Swisher  
Project Manager

CORPORATE OFFICE  
1650 Highland Dr.  
St. Louis, MO 63026  
314-343-8111  
314-343-6451 fax

REGIONAL OFFICE  
1451 Wilson Place  
Arlington Heights, IL 60004  
847-758-1060  
847-758-1009 fax

AERIAL PHOTOGRAPHY • SINCE 1962 • PHOTOGRAMMETRY



WESTERN AIR MAPS, INC.  
1-800-643-5177

MAIN OFFICE  
13001 WEST 95th STREET  
LENEXA, KANSAS 66215  
TEL: 617-558-5266  
FAX: 617-558-5267

Mark Green, E.I.T.

1997 MMA CONFERENCE EXHIBITORS THANKS FOR YOUR SUPPORT