



# MMA NEWS

Missouri Mappers Association  
P.O. Box 1692, Jefferson City, MO 65102

## Missouri Mappers Association 1996-1997 Executive Board

### President

Jeff Davis, PMM, Boone County  
801 E Walnut Rm 143  
Columbia, MO 65201  
573-886-4262

### Vice-President

Marti Buckner, PMM, Hickory County  
HC 77 Box 953  
Pittsburg, MO 65724  
417-745-6346

### Secretary

Kathy Edwards, PMM, Franklin County  
PO Box 44  
Union, MO 63084  
314-583-6389

### Treasurer

Belinka Novotny-Held, PMM, Jefferson County  
PO Box 100  
Hillsboro, MO 63050  
314-789-5467

### Director

Gladys Smith, St. Clair County  
R2 Box 193B  
Osceola, MO 64776  
417-646-8880

### Director

Linda Crane, PMM, Boone County  
801 E Walnut Rm 143  
Columbia, MO 65201  
573-886-4260

### Immediate Past President

Randy Mayden, M.J. Harden Associates, Inc  
1019 Admiral Boulevard  
Kansas City, MO 64106  
816-889-1114

## 1996 ANNUAL MEETING

Thanks to the committee members for a successful 1996 Annual Meeting. Breakfast was served to acknowledge those members who have achieved the PMM (Professional Missouri Mapper) designation.



Following, MMA president Randy

MMA members under the influence of hypnotist Brian Peters.

Mayden welcomed everyone to the meeting. Dan Roe, the Annual Meeting Chairperson, introduced the agenda which consisted of several guest speakers. Elizabeth Cook of the USDA Soil Conservation was the first speaker and discussed how GIS works for the conservation planning in the USDA field office. The next speakers were John Sweet and Jeff Leftwich from the Missouri Department of Transportation. Their topics included highway right of way deeds and those dreaded curves!

The executive board meeting was called to order by MMA president Randy Mayden. Dan Roe reported that the annual meeting consisted of 117 members and included 11 exhibitors and four sponsors (thanks to the recruiting skills of Kathy Edwards). Forty-six counties were represented. The committee and chapter reports were presented followed by nominations for the 1996-1997 Officers of MMA.

The first afternoon speaker, Darryl Williams of the National Mapping Division, enlightened us about the National Digital Orthophoto Quad program. Doug Burnett the new State Tax Commissioner was the next



Linda Crane, Marti Buckner, Jeff Davis, Randy Mayden, Gladys Smith, Kathy Edwards, and Dan Roe helping with the registration at the MMA Twelfth Annual Meeting.

## IN THIS ISSUE

Annual Meeting.....	1	Mapping Word Scramble.....	6
Announcements.....	3	Missouri Trivia.....	5
Awards.....	4	PMM Certification.....	4
Committee Members.....	2	Property Data Inc.....	6
Election Results.....	2	Transamerica Info.....	6
Exhibitors & Sponsors.....	7 & 8	Who's Who.....	3



### Annual Meeting Cont...

guest speaker. Last but not least, Patrick McCarthy, an attorney from Capital Title in Clayton, shared his knowledge of deed research and explained the difference between various types of deeds.

The evening's agenda began with the opening of the hospitality room. Exhibitors were available for questions and provided participants with lots of helpful information. Following the evening banquet, Brian Powers entertained the guests with a "HYPNOTIC" experience. The audience participated in various acts including a "Star Wars" shoot out, a visit with a guest from the moon, and a dance by three individuals (no names given) who actually thought they were about to win a million dollars! A good time was had by all.



Lewis Baumgartner humors the crowd as the "Worlds Worst Farmer".

The morning of the 16th, breakfast was served and guest speaker Lewis Baumgartner entertained the crowd with a talk on the "World's Worst Farmer". What a way to start the day. The annual meeting then resumed with the presentation of awards (see related article) and the election results (see related article below).

Special thanks to Dan Roe and the committee members who made this 1996 Annual Meeting a success!

### ELECTION RESULTS

The new officers of the Missouri Mappers Association for the 1996-1997 year are as follows:

President: Jeff Davis  
 Vice-Pres: Marti Buckner  
 Secretary: Kathy Edwards  
 Treasurer: Belinka Novotny-Held  
 Director: Gladys Smith  
 Director: Linda Crane

Congratulations to all the officers.



Jeff Davis, Marti Buckner, Belinka Novotny-Held, and Kathy Edwards at the Twelfth Annual Meeting.

### MMA 1996-1997 COMMITTEE MEMBERS

Chairperson listed first

#### Annual Meeting:

Linda Crane, Boone Co. (573)886-4260  
 Ona Thomas, Barton Co. (417)682-3553  
 Ruth Michael, Webster Co. (417)468-2169  
 Shelly Taylor, Howard Co. (816)248-3400  
 Loyola Vondra, Franklin Co. (314)583-6390

#### Awards:

Stephanie Trejo, State Tax Commission (573)751-1735  
 Linda Crane, Boone Co. (573)886-4260  
 Barbara Kaszuba, Newton Co. (417)646-8880

#### Certification:

Jeff Davis, Boone Co. (573)886-4262  
 Tim Houtchens, Taney Co. (417)546-6572  
 Stan Balsman, SEMO Planning (573)547-8357  
 Linda Crane, Boone Co. (573)886-4260  
 Loyola Vondra, Franklin Co. (314)583-6390  
 Linda Reynolds, Taney Co. (417)546-6572

#### Legislation:

Allen Berkstresser, Stone Co (417)357-6141  
 Darrel King, Moniteau Co. (573)796-4637  
 Kathy Edwards, Franklin Co. (314)583-6390

#### Education/Cadd:

Dan Reece, St.Charles Co. (314)949-7900ext.382  
 Teresa Barnes, Taney Co. (417)561-4445  
 Marti Buckner, Hickory Co. (417)745-6346  
 Carmen Bennett, Clinton Co. (816)539-3716  
 Sue Smith, Clinton Co. (816)539-3716  
 Chris Matthews, St. Louis Co. (314)889-2481  
 Stan Balsman, SEMO Planning (573)547-8357

#### Membership:

Gladys Smith, St Clair Co. (417)6468-8880  
 Becky Essick, Stone Co. (417)357-6141  
 Ruth Michael, Webster Co. (417)468-2169  
 Stephanie Trejo, State Tax Commission(573)751-1735  
 Marti Buckner, Hickory Co. (417)745-6346

#### Publication:

Belinka Novotny-Held, Jefferson Co. (314)789-5467  
 Sandy Cadenhead, Jefferson Co. (314)789-5041  
 Fred McGruder, State Tax Commission (573)751-1735  
 Wayne Overkamp, State Tax Comm. (573)751-1735  
 Dan Roe, Callaway Co. (573)642-0768  
 Patty Williams, Warren County(314)456-8885  
 Kathy Murphy, Jefferson County (314)789-5460

#### Historical:

Barbara Kaszuba, Newton Co. (417)451-8228  
 Shelly Taylor, Howard Co. (816)248-3400  
 Carl Sohn, Franklin Co (314)583-6389

#### Joint Coop:

Randy Mayden, MJ Harden Assoc., Inc (816)889-1114  
 Jeff Davis, Boone Co. (573)886-4262

---

**ON THE JOB, THINK LIKE THE OWNER.**

---



## ANNOUNCEMENTS

### Photo Acknowledgment

The Publication Committee extends a very special thank you and indebtedness to Loyola Vondera and Kathy Edwards who provided the photographs in this newsletter.

### Board Meeting

Meeting dates for the quarterly board meetings are set for Friday October 25, Friday January 24, Friday April 25, and Friday July 25. Meetings will be held at Miller Management Services, Inc. in Columbia. Start time will be 10:00 a.m. and are scheduled to end by noon. Contact Jeff Davis (573-886-4262) for additional information.

### GIS Conference

The Second Annual State of Missouri GIS Conference (MOGIS) is scheduled for March 10-11, 1997 in Jefferson City, Missouri. This conference will provide a forum for Missourians to come together and explore developments in the field of GIS and its associated technologies. Additional information will be forthcoming or contact Tim Haithcoat at 573-884-7802.

### Membership

Letters were sent out in September to every county not currently a member of MMA. There was a good response, even one new county. Welcome to MMA. We would like for all counties to renew if they haven't already. We have 65 counties with 178 paid members. This newsletter will go to everyone, but if you haven't renewed, we will have to drop you from the mailing list, so please renew.

Remember, you need to be an active, paid member of Missouri Mappers Association to maintain your PMM designation.

Gladys Smith  
Director/ Membership Chairperson

### Change Your Address?

If you have recently moved please let us know so you will receive the MMA News on schedule. Send address changes and corrections to:

Gladys Smith  
R2 Box 193B  
Osceola, MO 64776

### Advertising

Don't forget, your business card can be published in the next three issues of the MMA NEWS. The cost is only \$25.00! Please send business cards, comments, or corrections to:

Belinka Novotny-Held  
9801 Held Rd.  
Hillsboro, MO 63050

## WHO'S WHO IN THE MMA?

3

She has been working for six years in the mapping department of the St. Clair County Assessor's Office. Her title is Deputy Assessor/Mapper. One of her three sons is engaged to be married and she loves to go fishing. Meet one of the MMA Directors. (Gladys Smith)

The Assistant Supervisor of mapping for Franklin County Assessor's Office has 13 years experience and her PMM. She is a volunteer naturalist and loves antiques. You may find her at garage sales or antique shows. She is the MMA Secretary. (Kathy Edwards, PMM)

He can consult about your photogrammetry needs since he has 15 years experience at M.J. Harden Associates, Inc. You might find him on a golf course, in a garden, or in a boat fishing. Look out though, he's learning karate with his son! He also did a great job for MMA this past year, he is MMA's immediate past president. (Randy Mayden)

The Mapping Supervisor with PMM designation of the Jefferson County Assessor's Office has been at it for seven years and is an archaeologist by trade. She loves to read murder mysteries and create dried flower arrangements. If you have a flower garden, she's probably been there clipping flowers. She is the MMA Treasurer. (Belinka Novotny-Held, PMM)

He is a cartographer for the Boone County Assessor's Office and is a designated PMM. When he's not doing cartography he is probably hunting deer or turkey. He is the 1996-97 MMA President. (Jeff Davis, PMM)

She has her PMM and 18 years experience in the Boone County Assessor's Office as a cartographer. You would not believe she has a nine month old grandson. She also loves to ride horses. She is one of the MMA Directors. (Linda Crane, PMM).

She can sing to her heart's content and play the piano. You will find her in Hickory County working as the Chief Clerk/Mapper. She also has her PMM designation. Want to read a good book? Ask her, she may have a suggestion. She is the MMA Vice-President. (Marti Buckner, PMM)



*Jeff knew this place well. He need only wait...  
The deer would come, the deer would come.*



## PMM CERTIFICATION

As new chairman of the PMM Certification Committee I would like to congratulate Kathy Edwards on achieving her PMM designation. It takes a lot of hard work and dedication to achieve this goal, but it is well worth the effort. Anyone interested in taking the exam must meet the following requirements.

1. Have five full years of cadastral mapping experience or it's equivalent.
2. Be engaged in the use , production or maintenance of maps.
3. Attend a minimum of 30 hours of study in mapping, surveying or a closely-related subject.

Applications must be returned by the end of January. The exam will be given sometime in late March or early April. If you need an application or have questions feel free to contact me at (573)886-4262.

Jeff Davis, PMM  
MMA President/Certification Chairperson



Carl Sohn receives the Education Award from Ruth Michael.

## AWARDS

### 1996 Twelfth Annual Meeting

The Awards Committee presented awards on August 16, at the Twelfth Annual Meeting. These awards were presented to:

Carl Sohn..... Education  
Fireball ..... Randy Mayden  
Mappers of the Year ... Floyd Evans  
... Barbara Kaszuba  
Annual Meeting..... Dan Roe

The members of the Award Committee would like to congratulate these winners.

We are looking forward to next years Annual Meeting and wondering who will be honored with these awards for 1997.

Stephanie Trejo, PMM  
Awards Chairperson



Tim Houchins presents Kathy Edwards with the PMM designation.



Randy Mayden is presented the Fireball Award.



Ruth Michael presents Dan Roe with the Annual Meeting Award.





Barb Kazuba receives the Mapper of the Year Award.

## MISSOURI TRIVIA

### How Missouri Was Named

Father Jacques Marquette, accompanying explorer Louis Joliet, traveled down the Mississippi River in 1673. During the trip he wrote, "We descend following the course of the river, toward another called Pekitanoui, which empties into the Mississippi, coming from the northwest."

Although he called the river "Pekitanoui" - a name apparently given to him by the Sauk Indians-he noted on his map that a large tribe of Indians called the OuMissouri lived upstream. The name had been given to them by their enemies, the Fox tribe of Algonquins, and in the Fox language means "people with big canoes."

The Missouri, a branch of the Sioux, called the river Nishodse, which means "muddy water." This may explain the widespread (but incorrect) assumption that Missouri means muddy water. Whatever its earlier names, the mighty river which flowed into the Mississippi eventually was identified with the Indians who lived along its banks. It became the Missouri River.

Later, when settlers came, the vast area it drained (extending westward to the Rocky Mountains) became known as the Missouri Territory. In 1821, when the new state was formed in this territory, it adopted the name Missouri.

*Exert from Jefferson Watchman Vol. 11 No. 15*

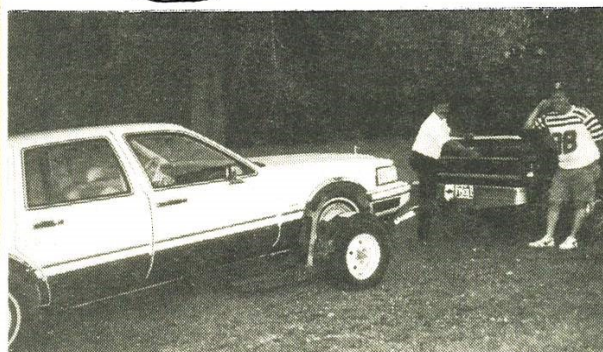
### MMA MEMBER NEWS

Larry Hixson was advised by his wife not to drive his car to the Twelfth Annual Missouri Mappers Convention. Lucky for Larry, Fred McGruder found him in Jefferson City along the side of the road. Fred reports that this was quite a trip; it only took 10 hours to travel 300 miles. (See photo next column).



Floyd Evans also receives the Mapper of the Year Award.

DO YOUR "GOOD DEED"  
FOR THE DAY!



**Question:** What is the best way for a Ford to get good mileage?

**Answer:** Tow it with a Ram!



## PROPERTY DATA INC

Within the title insurance industry hides a little known function called the "title plant". Though largely unknown to those outside of our industry (for that matter our industry is largely unknown to those outside our industry) it is the lifeblood of all the research done within those counties in which one (or more) exist. Property Data Inc. (PDI) provides this service for information primarily in the city and county of St. Louis. We also provide maintenance assistance for information of Jefferson County. Briefly the service we provide is to geographically index the information available within the public records of the recorder of deeds, assessors, district and probate courts. Yes we reinvent the wheel in that all of the information we handle is available in one or more of the public venues mentioned. The trick is to find it. Typically this information is posted chronologically and indexed by the names of the parties involved. We allow a quick reference to the history (chain of title) of property based on some form of description of that property. If the property is defined by lot and/or block of a recorded subdivision this process is relatively easy. More difficult is the metes-and-bounds description of unplatted property. Herein is where we hold interests similar to the rest of this membership. These tracts must be defined on a plat and given some identifiable characters readily postable to a computer system. Currently we do this with paper, protractor and scale. We hope to take advantage of the technology currently available with some form of automated mapping system within the near future since within the three counties mentioned we currently handle an average of 2000 postings daily. Though our reason for existence is the service I have just defined we utilize the data captured for a number of other market share reports, mortgage lists, new mover lists etc.... anything to make a buck.

For more information feel free to call at (314)727-8112 or fax (314)727-8841.

Gerald G. Scroggins  
President, PDI

## MAPPING WORD SCRAMBLE

deaignnceog  
rcae  
smcopsa  
praspem  
ertu trnoh  
gnebair  
tahrcragore  
rvetco  
notcyu  
lariea

## FOR SALE/WANTED COLUMN

Members, do you have mapping equipment you want to sell or purchase? We will advertise it for you in the MMA News free of charge. Send the name and type of equipment for sale/or wanted with your name and number to: Patty Williams, PO Box 565, Warrenton, MO 63383 or call Patty at (314)456-8885.

## TRANSAMERICA INFORMATION MANAGEMENT SERVICES

Transamerica Information Management Services (TIMS) is presently creating it's MetroScan software package for the counties of St. Louis, St. Charles, Jefferson, Franklin and the City of St. Louis.

What is MetroScan? It is a sophisticated yet easy to use research and marketing tool based on assessor property records updated MONTHLY, and it includes parcel maps. It is unquestionably the fastest, most powerful and proven real estate data system in the country. MetroScan lets you search by dozens of property indices such as street address, subdivision, tax identification number, owner name, investors names, assessed value, sales price, out-of-state and foreign owner, zip code, land use codes, and much more. It is all done in an instant on your desktop or notebook computer. Radius searches can be performed in 1/10 of a mile increments.

MetroScan data can be easily exported to your favorite word processing, contact database or spreadsheet programs. It even produces a variety of CASS certified mailing labels with barcode capability.

Individual parcels on an assessor map can be enlarged full screen and actually measured for square feet and square acres-even irregular shapes. You can then annotate information such as sales price, owner name, or "Comp 1" to the map and print it all! Have a color printer? MetroScan maps print in color.

MetroScan products include FloodScan, FEMA flood maps on CD, StreetScan, a GIS-based street level mapping system, MetroNet, an on-line service which allows you to access property information anywhere in the nation MetroScan is offered, and MetroScanPlus, a multi-page report showing demographic information from the census and other sources tied to any property.

The MetroScan national subscriber list is a who's who in the real estate and related industries; Coldwell Banker, Century 21, ReMax, Colliers International, CB Commercial, State Farm and Farmers Insurance, hundreds of title companies, including Stewart Title, major banks and mortgage companies, and city, county, state and federal government agencies.

MetroScan is supported locally by Paul Keppel and can be reached at (314)458-7500.

## 1996 ANNUAL MEETING EXHIBITORS



**Brad Rozelle**

TEL: 816-221-1328  
TEL: 800-221-7400  
FAX: 816-221-2719  
FAX: 800-221-7670

1235 Swift Avenue  
N. Kansas City, MO 64116

LAT 39-07-55 36283  
LONG 094-34-37 42640

The Source For All Your Surveying, Mapping & Data Acquisition Needs!  
\* Service \* Sales \* Support \* Rental \* Training \*

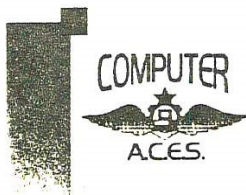


**CADLAB**  
Incorporated

Charleston • St. Louis • Nashville

**Wm. W. McNeary**  
President

P.O. Box 156, 115 North Main, Charleston, MO 63834  
(800) 455-3383 • (314) 683-3383



Computer A.C.E.S., Inc.  
11220 West Florissant #159  
St. Louis, Missouri 63033  
**(314) 869-1ACE**  
(869-1223)

**George A. Yerion, L.S.**

Internet 76667.1342@COMPUSERVE.COM  
CompuServe 76667,1342

Productivity Solutions for  
Architects, Contractors, Engineers & Surveyors

ESRI

Jeannine Walter  
Desktop Products Coordinator  
E-mail: jwalter@esri.com

Environmental  
Systems  
Research  
Institute, Inc.

820  
South St. Charles (314) 949-6620  
Main Street Missouri FAX  
Suite 207 63301-3306 (314) 949-6735

Saint Louis

**GLEN BUCKLAND**  
Mid-West Regional Manager  
806 Briarwood Court  
Lake St. Louis, MO 63367  
314-625-4114

**KUCERA International Inc.**  
PHOTOGRAMMETRIC CONSULTANTS

38133 Western Parkway  
Willoughby, OH 44094-7589  
Telephone (216) 975-4230  
FAX (216) 975-4238

Offices:  
Cleveland • Pittsburgh • Denver • Atlanta • Orlando • Columbus



**M.J. HARDEN**  
ASSOCIATES, INC.

PHOTOGRAMMETRY  
▲  
IMAGE PROCESSING  
▲  
GIS IMPLEMENTATIONS

**Arthur R. Schikore**  
Certified Photogrammetrist (ASPRS)  
Photogrammetry Division

Creve Coeur Executive Park  
680 Craig Road, Suite 310  
St. Louis, MO 63141

Tel: (314) 432-0066  
E-mail: aschikore@mjharden.com



**The Otis Eli**  
Corporation

**Rick Underwood**  
Technical Director

Phone: 314-561-3327

418 Wharf St, Lake Saint Louis, MO 63367

**Rotolite of St. Louis, Inc.**



**ANDY J. CANZIANI**  
SALES MANAGER

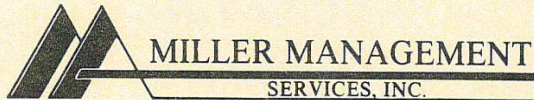
5301 HAMPTON AVENUE, ST. LOUIS, MO 63109  
(314) 832-2091 (314) 832-9423 FAX

Thank you for your support!.....Exhibitors cont...



## 1996 ANNUAL MEETING EXHIBITORS AND SPONSORS cont...

John Roe



1390 Boone Industrial Drive, Suite 100  
Columbia, MO 65202

(573) 499-4814  
FAX (573) 499-4819

EXHIBITOR AND SPONSOR

ROBERT A. WILLIAMS

WALKER & ASSOCIATES, INC.

(314) 343-6111

PHOTOGRAMMETRIC  
SERVICES

1650 HEADLAND DR.  
FENTON, MISSOURI  
63026

EXHIBITOR AND SPONSOR

AERIAL PHOTOGRAPHY • SINCE 1960 • PHOTOGRAMMETRY



**WESTERN AIR MAPS, INC.**  
**1-800-643-5177**

MAIN OFFICE  
13001 WEST 95th STREET  
LENEXA, KANSAS 66215  
TEL. (913) 888-5266  
FAX (913) 888-5361

Susan R. Williams  
Manager, GIS Services  
"Professionals Serving Professionals"

EXHIBITOR AND SPONSOR

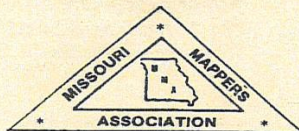
**QUALITY REPROGRAPHICS, INC.**

Robert M. Beckmann

7546 Watson Road  
St. Louis, Mo. 63119  
Telephone (314) 961-4041  
800-989-4041  
Fax (314) 961-4746

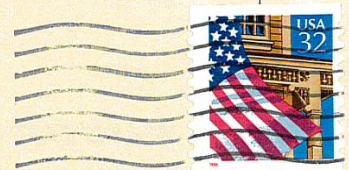
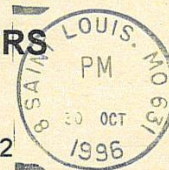


SPONSOR



**MISSOURI MAPPERS  
ASSOCIATION**

P.O. Box 1692  
Jefferson City, MO 65102



Barbara Kaszuba PMM  
Newton County Assessor's Office  
1919A LaQuetta Drive  
Neosho, MO 64850

64850+2848