



Volume 11, Issue 3, Oct. 15, 1995

MMA NEWS

MISSOURI MAPPERS ASSOCIATION
P.O. Box 1692, Jefferson City, Missouri 65102

MISSOURI MAPPERS ASSOCIATION 1995-1996 EXECUTIVE BOARD

President

Randy Mayden
M.J. Harden Associates, Inc.
1019 Admiral Boulevard
Kansas City, MO 64106
816-889-1114

Vic-President

Jeff Davis
Boone County
701 E. Broadway
Columbia, MO 65201
314-886-4262

Secretary

Buzz Key
Platte County
409 Third Street
Platte City, MO 64079
816-858-3313

Treasurer

Belinka Novotny-Held
Jefferson County
P.O. Box 100
Hillsboro, MO 63050
314-789-5467

Director

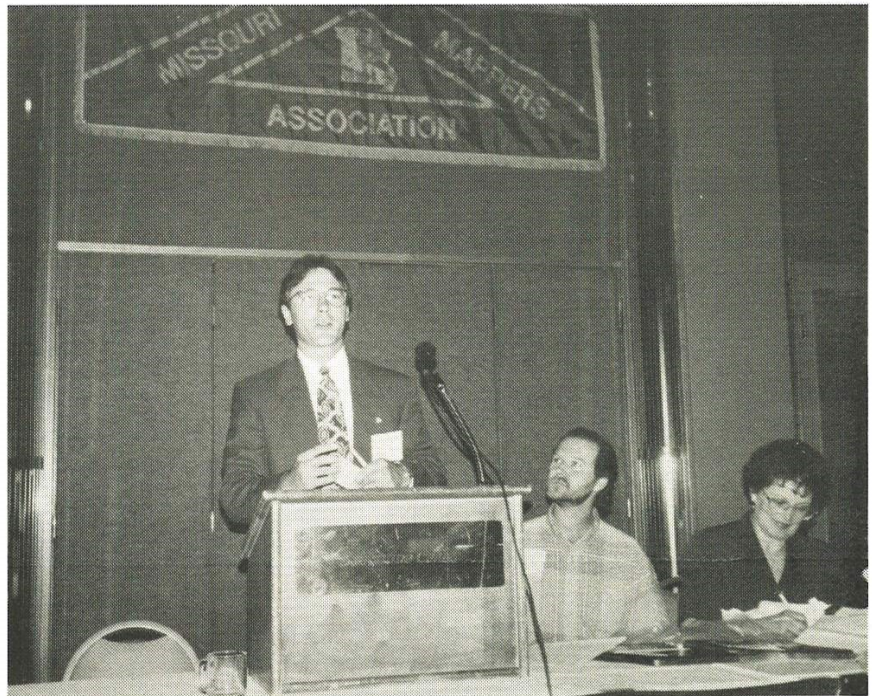
Marty Buckner
Hickory County
HC 77 Box 953
Pittsburg, MO 65724
417-754-6346

Director

Gary White
St. Louis County
41 S. Central
Clayton, MO 63105
314-889-2481

Immediate Past-President

Carl Sohn
Franklin County
P.O. Box 44
Union, MO 63084
314-583-6389




Dear MMA Members,

Thank you for placing your trust in the new MMA executive board. Along with all members, I would like to thank the new board and committee members for dedicating their future time and efforts. We may have set a new record with 24 volunteers for committees. How's that for enthusiasm and commitment!

As I mentioned at the Annual Meeting, one of my goals for the organization is to promote cooperation between county, state, local, federal and utility concerns. With the technology available today and the combined need and use of the property mapping produced by the members of this organization, we should take the opportunity to lead the cooperation movement. At the first quarterly board meeting I will bring this issue up for discussion and hopefully develop a new committee.

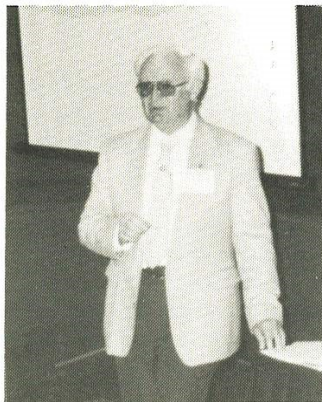
The meeting dates for the quarterly board meetings are; October 27, January 26, April 26, and July 26. All meetings are scheduled for 10 a.m. at Miller Associates in Columbia, MO. If anyone has an issue they would like to discuss with the board please feel free to attend or call me at 816-889-1114 to relay your concerns or ideas.

Sincerely,


Randy Mayden
MMA President

THE 1995 ANNUAL MEETING
AUGUST 3 & 4, 1995

Our first speaker was Bob Meyers, PMM of the Department of Natural Resources in Rolla. Bob's presentation was on the quality of mapping in our state. He states that maps must be built on a reliable framework. Our biggest problem, as mappers, is the transfer of the curved earth's information onto a flat map. Control (x,y and sometimes z coordinates) are the framework used in this transfer of information. This use of coordinates for transfer is called "Geo-referencing". This is important for the accurate location of certain features (i.e. water lines, manholes, etc.), also, so that separate maps can be referenced to each other. Area consideration is another aspect that geo-referencing addresses. Cost of geo-referencing is also a concern in mapping. Because of all the aforementioned concerns standards are necessary. The compilation of maps must meet the "National Map Accuracy Standards". As in all disciplines there is an acceptable margin of error or accuracy allowed. The NMAS sets out acceptable levels of accuracy for mapping. When we contract for mapping services the contract needs to call out : 1) geo-referencing, 2) control, 3) meeting minimum DNR mapping standards. Bob then described the mapping project in Franklin County. This project was to put in control for digital ortho-photography.



BILL BRENNER of THE STATE TAX COMMISSION, discussed some current legislation effecting the Assessor's Offices in Missouri. The indices for each county are going from the national 10% to 5% making assessing accuracy more important. This is from HB211.

Bill then discussed the fact that nursing homes, mobile home parks, and apartments are going from commercial to residential classification, 32% to 19%. Nursing homes, however can reflect split use: Units as residential, Office space as commercial.

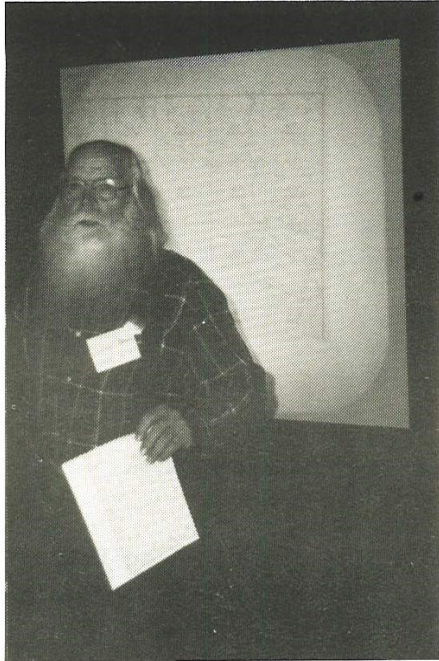
- SB255 - effecting the \$2.75 minimum levy law was also discussed.
- HB256 - County Commissioners going from 2 year to 4 year terms.
- HB274 - mileage reimbursement changes.



GUEST SPEAKER

There was a guest speaker during the lunch session this year, DERRY BROWNFIELD of the syndicated radio show, The Brownfield Network. Derry was, to say the very least, entertaining. With his ability of humor, Derry spoke on the sometimes mis-interpreted notion that progress is always for the better.





Norman Brown of the DNR was the Friday morning speaker. Norman's presentation was the Spanish Land Grants, consisting of oddly shaped pieces of property mainly along the Mississippi River and the Missouri River, stopping before Kansas City where lands had already been surveyed into 1 mile square sections. These land grants were called "private claims of individuals" back in the 1800's, this was all prior to the Louisiana Purchase. Norman discussed the governing hierarchy established in this region and the procedure by which individuals applied for "permission to settle" property. This procedure is what led to the appeal appointment of the first Recorder of Title and Court Commissioners in 1805 who heard the appeal for the title and then it was either confirmed or denied. The first confirmation was issued in 1808. In 1812 the board closed with 1340 claims:
 712 concessions
 80 orders of survey
 425 settlement rights
 123- 10 year possessions
 many rejected over 2000 claims.

Between 1812 and 1816 the Recorder of Land Titles heard all claims. The land survey of 1 mile sections began in 1816.

AWARDS PRESENTATION

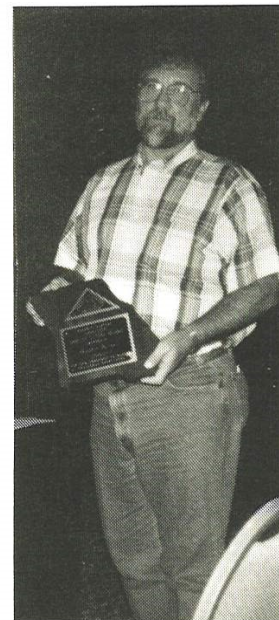
Barb Kaszuba presented the following awards:

ANNUAL MEETING	Shelly Taylor
EDUCATION AWARD	Bob Friesen
FIREBALL AWARD	Kathy Edwards
MAPPER OF YEAR	Sarah Anderson
RECOGNITION AWARD	Carl Sohn, outgoing MMA president.



ANNUAL MEETING

Shelly Taylor



EDUCATION AWARD

Bob Friesen



FIREBALL AWARD

Kathy Edwards

A \$25.00 fee is required with the certification application. Applications could be sent to the Certification Committee no later than January 30, 1996. If you would like to receive an application or have questions concerning the designation please contact:

TIMOTHY J HOUTCHENS PMM
TANEY COUNTY ASSESSORS OFFICE
PO BOX 612
FORSYTH, MO 65653
(417) 546-6572 (office)
(417) 334-3028 (home)

Tim Houtchens presented PMM designations to three successful candidates:



RECOGNITION AWARD

Carl Sohn, outgoing MMA president

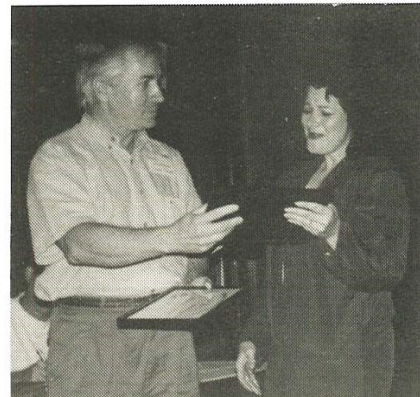


Belinka Novotny - Held

PMM NEWS RELEASE

As chairman of the PMM certification committee, I would like to congratulate Barbara Kaszuba, Stephanie Trejo, and Belinka Novotny-Held on achieving their PMM designation. In addition to the ability, this designation requires a substantial amount of study and knowledge, and is why a PMM is held to a higher standard of excellence. Anyone interested in becoming a candidate for the comprehensive 7 hour exam must meet the following criteria:

1. Be a member of the Missouri Mappers Association in good standing.
2. Have 5 full years of Cadastral Mapping experience of its equivalent.
3. Be engaged in the use, production or maintenance of Cadastral Maps.
4. Attend a minimum of 30 hours of study in Mapping, Surveying or a closely related subject.



Barb Kaszuba



Stephanie Trejo

MEMBERSHIP NEWS

Letters were sent out in September to every county not currently a member of MMA. There was a good response, even six new Counties DeKalb, Cedar, Wayne, Dallas, Ralls and Nodaway. Welcome to MMA. We would like for all counties to renew if they haven't already. We have 63 counties with 181 paid members. Newsletters will go to everyone, but if you haven't renewed, we will have to drop you from the list, so please renew. Also, if you have never received a membership certificate, please let us know so we can get you one.

GLADYS SMITH
Membership Committee MMA
R2 Box 193B
Osceola, Mo 64776
(417) 646-8880

EDUCATION COMMITTEE REPORT OCT. 1995

The Education committee will be holding some combined Mapping Fundamentals and Introduction to Computer Mapping workshops in late November, early December of 1995. The locations will be Sedalia and Cape Girardeau. Some other workshops that are always being considered are Aerial Photography (contract specifications and interpretation); G.I.S (Geo. Info. Systems, graphic and data linkage) seminars/workshops; Intermediate Mapping (a workshop for more complex problem solving, highway and railroad curves etc.). The workshops that the Education Committee held since the Aug. 1994 annual convention were; I.A.A.O. Course 6, September 19-23, 1994 in St Charles, Mo. with A. Dean Lewis as the instructor; Mapping Fundamentals, May 23, 1995 in Springfield, Mo. with Chris Matthews and Rick Sohn as instructors. The Education Committee is always open to input and workshop suggestions as well as those who are willing to contribute their talents for a workshop or seminar. Phone: Chris Matthews (314) 889-2239 or (314) 889-3863 (fax)

BANQUET

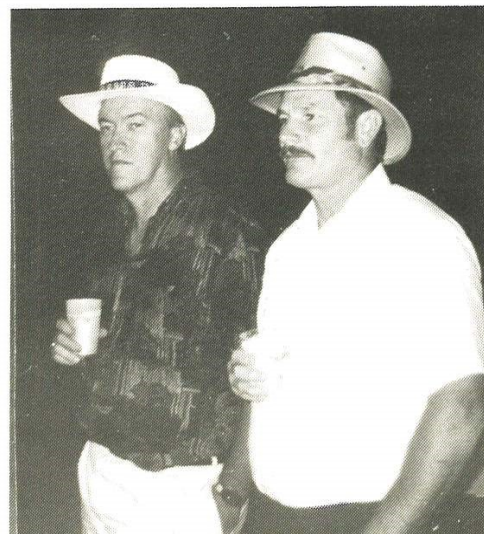
The banquet on Thursday evening had a "Hawaiian Theme!"



Wayne Overkamp received Best STC Rep.



Larry Hixon and Fred McGruder scope out Casino Night



MISSOURI MAPPERS ASSOCIATION
1995-1996 COMMITTEE MEMBERS

ANNUAL MEETING

MARY ANN KAISER, MILLER MGT.(314)499-4814
1390 Boone Industrial Dr, Columbia, Mo. 65202
Barbara Kaszuba, Newton Co.(417)451-8228
Kathy Edwards, Franklin Co.(314)583-6390
Ona Thomas, Barton Co.(417)682-3553
Shelly Taylor, Howard Co.(816)248-3400
Linda Crane, Boone Co.(314)886-4260
Loyola Vondera, Franklin Co.(314)583-6390

AWARDS

STEPHANIE TREJO, STATE TAX COMMISSION(314)751-1735
R1 BOX 77, Elkland, Mo. 65644
Loyola Vondera, Franklin Co.(314)583-6390
Ruth Michael, Webster Co.(417)468-2169
Linda Crane, Boone Co.(314)866-4260

CERTIFICATION

TIM HOUTCHENS, Taney Co. (417) 546-6572
P.O. Box 612, Forsyth, MO
Loyola Vondera, Franklin Co.(314)583-6390
Stan Balsman, SEMO Regional Planning, (314)547-8357
Jeff Davis, Boone Co.(314)886-4262
Linda Crane, Boone Co.(314)886-4260

LEGISLATION

KATHY EDWARDS, Franklin Co. (314) 583-6390
P.O. Box 44, Union, MO 63084
Gary Higgs, St. Louis Co. (314)889-2481
Alan Berkstressor, Stone Co.(417)357-6145
Bruce Fenwick, ST. Louis Co.(314)889-2481
Bill Brenner, State Tax Commission(314)751-1735

EDUCATION

CHRIS MATTHEWS, St. Louis Co. (314) 889-2481
41 S. Central, Clayton, MO 63105
Buzz Key, Platte Co. (816) 858-3313
Linda Reynolds, Taney Co. (417) 546-6572
Carl Sohn, Franklin Co. (314) 583-6389

MEMBERSHIP

GLADYS SMITH, St. Clair Co. (417) 646-8880
R2 Box 193B, Osceola, MO 64776
Linda Crane, Boone Co.(314)886-4260
Marti Buckner, Hickory Co.(417)745-6346

PUBLICATION

CARL SOHN, Franklin Co. (314) 583-6389
P.O. Box 44, Union, MO 63084
Kathy Edwards, Franklin Co.(314)583-6390

HISTORICAL

BARBARA KASZUBA, Newton Co. (417) 451-8228
1919A Laquesta Dr, Neosho, MO 64850

CADD

BOB FREISEN, Stone Co. (417) 356-6141
P.O. Box 135, Galena, MO 65656
Stan Balsman, SEMO Reg. Planning, (314)547-8357
Teresa Barnes, Stone Co.(314)356-6141
Marty Buckner, Hickory Co. (417) 745-6346
Buzz Key, Platte Co.(816)858-3313
Dennis Geivett, St. Louis Co.(314)889-2481

CHAIRPERSON IN CAPITALS

ELECTION RESULTS-NEW OFFICERS

PRESIDENT	RANDY MAYDEN
VICE-PRESIDENT	JEFF DAVIS
TREASURER	BELINKA NOVOTNY - HELD
SECRETARY	BUZZ KEY
DIRECTOR	GARY WHITE



MESSAGE FROM PAST PRESIDENT

Thanks to everyone for all your help during the 1994-95 year. The board and committee personnel were great to work with. Remember MMA is a joint effort. Many Thanks again.

Carl Sohn PMM
EX-EL PRESIDENTAY

Special Thanks to all the outgoing MMA Officers and Committee Members. You did a terrific job this past year, and we really appreciate it. We also appreciate the generous support of the State Tax Commission and the International Association of Assessing Officers.

EXHIBITORS

Thanks to all the Exhibitors who helped to
make this convention a big success.



BUSINESS RECORDS CORPORATION

ALAINE AYSTA
Senior Sales Executive

7227 Third Street South, P.O. Box 1082
St. Cloud, Minnesota 56302

800-800-8255
612-253-2170
Fax: 255-9986

- XEROX 2510, 2515, 2520, & 3050 SALES & SERVICE
- DIAZO MACHINES SALES & SERVICE
- CAD PLOTTER SUPPLIES • COMPLETE REPRODUCTION SERVICES
- ENGINEERING, ARCHITECTURAL AND SURVEYING SUPPLIES
- PLOTTER SALES

Springfield Blue Print & Photo Copy Co. Inc.

SINCE 1930

PHILIP ARNOLD
Sales Representative

Phone 417-869-7316

Saint Louis

GLEN BUCKLAND
Mid-West Regional Manager
806 Briarwood Court
Lake St. Louis, MO 63367
314-625-4614

KUCERA International Inc. PHOTOGRAMMETRIC CONSULTANTS

38133 Western Parkway
Willoughby, OH 44094-7589
Telephone (216) 975-4230
FAX (216) 975-4238

Offices:
Cleveland • Pittsburgh • Denver • Atlanta • Orlando • Columbus



MARTIN E. HENSHAW
Account Executive

520 Spirit of St. Louis Blvd.
Chesterfield, MO 63005

314-532-3427
FAX 314-537-9638

— Photogrammetric Engineering Solutions —

1390 Boone Industrial Drive
Columbia, MO 65202

Dan Roe



Area Offices:
Arkansas
Illinois

(314) 499-4814
FAX (314) 499-4819

WILLIAM A. (SANDY) FOWLKES IV CERTIFIED PHOTOGRAMMETRIST

WALKER & ASSOCIATES, INC. (314) 343-6111

PHOTOGRAMMETRIC
SERVICES

1650 HEADLAND DR.
FENTON, MISSOURI
63026

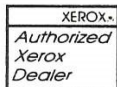


5301 HAMPTON AVE.
ST. LOUIS, MO 63109

ANDY J. CANZIANI
SALES MANAGER

- XEROX ENGINEERING COPIERS
- BLUEPRINT MACHINES
- PAPER, MYLAR & DRAFTING SUPPLIES
- MUTOH & PLOTTERS HP INK JET

FAX 832-9423
PHONE 832-2091



AERIAL PHOTOGRAPHY • SINCE 1960 • PHOTOGRAMMETRY



WESTERN AIR MAPS, INC. 1-800-643-5177

MAIN OFFICE
13001 WEST 95th STREET
LENEXA, KANSAS 66215
TEL (913) 888-5266
FAX (913) 888-5361

Jeff Buchanan
Client Consultant



*Your single source for Reprographic
Services, Plotting & Drafting supplies!*

GARRY DAVIS
Vice President

1062 S. Brentwood Blvd
St. Louis, Mo. 63117
Ph (314) 726-5500
Fax (314) 726-2439

BUSINESS CARDS

Your Business Card can be published in this
newsletter at a cost of \$25.00 annually.
Please send business cards or any other
contributions for this newsletter to:
CARL SOHN, PO BOX 44, UNION MO 63084



Thanks goes out to the Annual Meeting Committee for the excellent job they did on coordinating a successful convention this year. Special Thanks to Chairperson Shelly Taylor for a job well done, also Thanks to committee persons Linda Crane and Kathy Edwards.



**MISSOURI MAPPERS
ASSOCIATION**

P.O. Box 1692

Jefferson City, MO 65102