

MMA NEWS

MISSOURI MAPPERS ASSOCIATION
P.O. Box 1692, Jefferson City, Missouri 65102

JUNE 1994



JERRY W. JOE, PRESIDENT

Andrew County
PO Box 149
Savannah, MO 64485
(816)324-3023

**CARL L. SOHN, PMM
VICE PRESIDENT**

Franklin County
PO Box 44
Union, MO 63084
(314)583-8855

**CAROL ANN FREEMAN,
SECRETARY**

Texas County
210 N. Grand
Houston, MO 65483
(417)967-4709

**CAROL SPILKER,
TREASURER**

St. Charles County
118 N. 2nd St., Rm 206
St. Charles, MO 63301
(314)947-2659

RANDY MAYDEN, DIRECTOR

M.J. Hardin Assoc., Inc.
1019 Admiral Blvd.
Kansas City, MO 64106

JOE FERRIS, DIRECTOR

Grundy County
PO Box 452
Trenton, MO 64683
(816)359-2413

**DEBBIE COCHRAN, PMM
IMMEDIATE PAST PRESIDENT**

U.S. Geological Survey
1400 Independence, Ms 507
Rolla, MO 65401
(314)341-9343

MESSAGE FROM THE PRESIDENT

As summer rapidly approaches, our thoughts turn to weekend cookouts, outdoor activities, and vacations. Of things we would like to do and places we would like to see. We all try to plan as much fun into our summers as possible. As members of the Missouri Mappers Association, we should all try and plan to attend this years' Annual Meeting in August. We're celebrating our 10th anniversary and if you've attended prior meetings, you know it can be a fun and informative time. If you have not had the opportunity to attend or are a new member, I would urge you to attend this years meeting to help us celebrate. Some special things have been planned, that I hope you'll all enjoy. Again, please try to attend and help us celebrate ten good years. Hope to see you all there.

Jerry Joe,
President, MMA

MID AMERICA GIS SYMPOSIUM

Approximately 500 people attended the Mid-America GIS Symposium in Kansas City on May 2, 3, and 4, 1994. This symposium was co-sponsored by Missouri Mappers and Kansas Mappers, along with URISA and others. There were 20 GIS short courses available, including digital orthophotography, GPS monumentation, and imaging technology.

It was an interesting and successful symposium. Anyone interested in learning more about GIS would benefit from attending the Mid-America GIS Symposium next year.

Carl Sohn, PMM
Vice-President, MMA

FUTURE TENSE

Mapping is making a comeback. With a vengeance. If you doubt that mapping was on hiatus, go look over some assessment plat books at a county near you. The plat books have served a fine purpose over the years. They've been drawn, redrawn, scraped, scratched and poked. And still they tell the story of the land. They've done their job well, even with all the errors, blotches and inconsiderate treatment they've received. In these books resides the information necessary for taxing property.

Assessment needs a slew of information about each parcel: owner, acreage, taxing address, mailing address, deed numbers, improvements to the property, appraised value, and many other items of information which help in the valuation of a particular parcel of land. For this reason, counties use a system which tags the database information about the parcel to the map. Basically the information is stored "spatially". As a result, the public finds assessment records useful for a variety of non-taxing reasons. Most counties find themselves doing a brisk business in information selling.

Because of the enormous growth experienced by the urban counties and the subsequent changes which are imposed on the overworked assessment maps, the first class counties are finding that computer mapping makes it possible to keep up with the changes and provide a variety of custom map products. These custom maps may show per capita income in graduated colors by parcel or any area designated. Maps can show soil types, crime statistics, or any other information which can be displayed "spatially". The urban public, which includes the whole real estate community, the business community and out of town investors, have all come to expect fine map products upon which to do their research and base their plans. Maps presented to citizens who are preparing to relocate or to potential corporate investors often create a first impression for the county.

Many of the kinks of computer mapping have been worked out (at enormous expense in some cases) by the first class counties. As the wave of development moves out from the urban centers and population pressure shifts the land use and parcel configurations, the second class counties are beginning to find computer mapping to their advantage. Meanwhile, many federal government agencies are producing maps for a variety of reasons and uses, and their mapmakers are beginning to look at the assessment plat maps as a possible source for a nationwide "seamless" mapbase. Entrepreneurs and profit motivated mapmakers are seeing the treasure of information in County assessment as a untapped gold mine of information which could be used to make a buck with minimal effort.

For this reason legislation for the protection of stored, publicly accessible information is sorely needed, particularly for those stores of information which are on computer. Every county has stores of this type. Even if a county has not computerized its assessment mapbase, the informational database which is tagged to the map is on computer and is open to public scrutiny and use.

As the information highway develops over the next few years, and as public use of the assessment information increases, steps will have to be taken to protect the counties' investment in the information.

Why should someone else make a profit on the information when the counties are often scrambling for funds? I leave you with this question.

THE MMA LEGISLATIVE COMMITTEE ANNUAL REPORT

The MMA Legislative Committee held its organizational meeting for the 1993-94 year at the MMA Annual gathering in Columbia on August 20th, 1993. During this meeting, the year's agenda was proposed and plans for the year and individual member tasks were discussed. A second and special meeting was held during the MMA sponsored Flood Symposium on November 5th 1993 at the University of Missouri in Columbia. The topic of this particular meeting was the aspects of the flood as they related to the issues of legislation at the state level. All members of the committee were not able to attend. The committee plans to hold its third and concluding meeting for 1994 in conjunction with the annual MMA conference in Columbia August 18 and 19. During this year, the committee has placed an emphasis on the establishment of a working liaison with the legislative committees or contacts of related professional groups. The St. Louis Chapter of the American Society of Photogrammetry and Remote Sensing (ASPRS) and the Midwest Gateway Chapter of the Urban and Regional Information System Association (URISA) are two groups with which relations have been established. The committee has also reviewed and voted to present to the general membership a proposal from the state surveyor for the legal adoption of a state map accuracy standard. The committee has a standing invitation to MMA members who maybe interested in legislative issues to one of us and join in. Tentative objectives for 1994-95 have been established, and will be presented at our concluding meeting. These ideas include continuation of the 1993-94 efforts and thinking about reaching out to the state legislature and related state agencies.

A CALL TO LEADERSHIP

Over the past decade MMA has experienced extraordinary leadership. We started as a fledgling offshoot of the IAAO and then got a big assist from the State Tax Commission. We needed, as people interested in cadastral mapping, our own organization which specifically focuses on mapping. We needed an organization dedicated to the development of our professional mapping skills and the progress of cadastral mapping in general.

We have a constitution, which states our interests and purposes and provides a framework by which we can grow and fulfill our goals. We have a designation recognized as a standard of professional excellence, the PMM designation. We have classes in various mapping techniques and technologies. MMA has several active local chapters. Good leadership and member participation made all this possible. Thankfully, many of the people who built this organization are still working diligently, welcoming and encouraging our newer members to take part.

The foundation has been laid and it works. The vigor and foresight of the founding members has paid big dividends. We have good communication as a professional group. We are benefitting from a higher level of information exchange and technology sharing. This is good. Those of us who have entered the association late in the game might take these benefits for granted. Furthermore, we may be inclined to sit on our duffs, thinking that the MMA machinery will run nicely by itself. People need to make the plans, people need to do the footwork, and people need to participate. The "machinery" uses "people power".

Two problems face us as a maturing professional association. First, our membership has become large enough that when a job needs doing, it is easy to assume someone else will take care of it. It is no longer necessary for every member to take an active role for the association to survive, but it is necessary that a good percentage of the membership contribute their time and energy on a regular basis to keep MMA alive. The second problem is more complex. The adage "use it or lose it" holds true for professional associations, too. If leadership keeps a fresh outlook and improves on what we have, then we will grow. If the committees and leadership just preserve the status quo then we will eventually "wind down" into a sleepy little association that does nothing and benefits no one.

THIS IS A CALL TO LEADERSHIP. We need new goals to keep the vitality of the association intact. Those of you who have participated at the committee level or in leadership in the past, THANK YOU and keep up the good work. To those of you who are considering volunteering for committee work at the upcoming

convention, GREAT, but please do not do so lightly. Our committees need to be active and responsive to the changes that are happening in the cadastral mapping environment and the economy. If you find yourself on a committee, please participate as your committee head requests and meet your deadlines. Those of you who will be heading committees, stay in touch with other committee heads and the board of directors, contact your committee members on a regular basis, attend the board meetings and contribute creatively when possible.

CENTRAL EAST CHAPTER REPORT

Our last two meetings have seen a rise in attendance - possibly because many have caught up with flood mapping (enough, at least, to lift their noses from the grindstone and see if it looks like rain again soon). About thirty attended each meeting. The presentation (and the flood) was great both times.

Rick Underwood (Vice President in Charge of Development: Graphic and Data Solutions) addressed "GIS Implementation Issues" at our March meeting. This topic was not an easy one considering the diversity of our group. Some counties are operating sophisticated GIS/CAD systems on DOS and UNIX while others have very little "automation" or are in various stages of procurement. Rick's presentation was skillfully tailored to provide valuable information for any of us.

Franklin County hosted Dave Gilberts (Registered Land Surveyor) at our last meeting for a captivating presentation on the history of section lines surveyed in Missouri. I now have a better understanding of the "variance" of section lines, and the rigors facing surveyors, then and now. Bill Kalkonski (president of MARLS) also attended this meeting and extended an invitation to Missouri Mappers to become involved in MARLS activities.

At our next meeting, I'll be talking about Global Positioning Systems. Hopefully, I'll have the equipment by then to demonstrate real-time mapping. Incidentally, a Coast Guard GPS base station began transmitting over one month ago from Somerfield, Illinois. This correcting signal is available to the public and intermittently reaches as far as Kansas City and Keokuk, Iowa.

Dan Reece is co-chairman of Missouri Mappers Eastern Division and develops GIS/CAD maps for the telecommunications industry at Atwater Mapping and Consulting Services.



*****QUESTIONNAIRE*****



PLEASE FILL IN THE CHARTS AS COMPLETE AS POSSIBLE.

NOTE: YOU MAY SEND A COPY OF YOUR PUBLISHED PRICES IN LIEU OF THE PRICE CHART.

How many parcels are within your county ? _____

What types/brands of reproduction equipment do you possess ?

	BRAND/MODEL	SIZE LIMIT	AGE
BULEPRINT			
ROLL/FEED COPIER			
MICROFILMER			
SCANNER			
OTHER			

What types of maps, record plats, aerials do you offer for sale to the public ? These may include include planimetric/line maps, numeric coded maps, zoning, township, election, school district, land use, street guide etc. and composites or overlays of these maps.

**** EXAMPLE ****

PARCEL MAPS W/TAX IDENT. NUMBS.	16" X 22"	1" = 400'	\$ 4.50	\$ 3.00 /20+	228
AERIAL PHOTO. BLUEPRINT	36" X 42"	1" = 400'	\$ 5.00	\$ 4.00 /10+	136

TYPE	SIZE	SCALE	PRICE	QUANTITY PRICE	#

What do you charge for real estate records (ownership info.) ?

SINGLE COPIES

MULTIPLE PRINTOUTS

What do you charge for copies of non-county source documents ?

XEROX

PER SQ. FT. BLUEPRINTS

PER SQ. FT.

Do you offer any maps in digital/computer disc form ? _____

Any other map office products ? _____

PLEASE MAIL TO: CHRIS MATTHEWS (R.T.S. 3rd floor)
41 S. CENTRAL AVE. CLAYTON, MO. 63105

WEST CENTRAL DISTRICT REPORT

The West Central District Chapter of Missouri Mappers Association had an interesting year. As a small group, we have been able to interact with each other on many small details of the mapping departments. We have also had some very interesting meetings this year.

In January, we met in Boonville for a workshop on mapping curves. Jeff Davis, from Boone, county was our guest. He provided us with excellent assistance in working out some very difficult curves. During the course of the meeting, he stated that he wished he could become a member of the West Central District. His wish was granted in April, when the Executive Board approved the West Central District include Boone County.

Three members of WCD attended Course Six in Columbia during the month of March. All three were excited about the school, but were just a little apprehensive about their abilities. Those of us who had taken course six previously assured them they would have no problems.

The April meeting was held at the Missouri Department of Natural Resources, Division of Geology and Land Survey building in Rolla. The chapter toured the DNR building and visited with some of the employees about their specific jobs. We were taken into the climate controlled room which houses the original survey notes and many of the original maps of Missouri. It was a very interesting day. We had hoped to visit with Jim Matlock, but as luck would have it, he was out of the office that day. However, two of our counties were able to take advantage of Jim's offer and had their mylars copied.

The Chapter's next meeting will be a tour of the government buildings in Jefferson City. Howard county assessor, George Frink has graciously agreed to act as tour guide. The meeting has tentatively been set for August 17, 1994.

M.J. HARDEN ASSOCIATES COMPUTER TECHNICAL SERVICES

M.J. Harden now offers comprehensive computer technical services to businesses and individuals needing system configuration, installation, training, support, maintenance, hardware, or software. The Technical Services staff possesses the expertise to analyze your computer system requirements as a company, office, or department and develop a solution for current and future needs. Configuration of your system is done with precision and accuracy according to your individual requirements. M.J. Harden Technical services has extensive experience in hardware and software installations ranging from single-user personal computers to multi-user client/server systems. We have affiliations with ESRI, IBM, Intergraph, and various other companies, allowing us to offer extensive and affordable choices in hardware and software.

We realize that most smaller organizations cannot afford the financial burden of a full-time employee to support the system and its users. We can provide your company with all of its support requirements at an affordable cost. Whether by telephone, remote login, or on-site visits, M.J. Harden Technical Services has the solution for you. For more information, contact John Novotney or John Utley at (816) 842-0141.

HOW MUCH IS THAT MAP?

The Education Committee was presented with an interesting idea by Pat Ferguson, of Clay county. This idea involved comparing prices statewide that counties charged for copies of maps, plats, aerials and any other document reproduction services. A questionnaire has been included with this newsletter, so please take a few minutes and complete this form. The results will be published for MMA members to see the variety in documents and services offered by counties. MMA members not working in assessors' offices can submit the general services they offer without prices.

COURSE SIX UPDATE

The education committee will sponsor an IAAO Course Six the week of September 19 - 25 in St. Louis. This time was chosen so as not to conflict with the MMA and IAAO conferences, and to give ample time for planning and registering participants. This location was chosen because of several persons in eastern Missouri requesting course six. Columbia was being considered for the course, but the course was held there March 1994 by the MAA (Missouri Association of Assessors). As always, opinions and suggestions on courses, workshops, etc. are welcomed and committee volunteers are always needed. Those wanting to reserve a spot for course six before the formal registration can also write or call the education committee:

Chris Matthews (Education Committee Chair)
41 South Central Avenue
Clayton, MO 63105
(314) 889-2239 (work)
(314) 889-2428 (work fax)
(314) 272-8742 (home)

Note: Some Missouri Counties with multiple members will be sent only one questionnaire.

WHAT'S NEW IN TOPOGRAPHIC MAPS?

How long has it been since you updated your topog map files? If you can't remember, chances are you're in for a big surprise!

The state of Missouri is now completely covered by 7 1/2-minute-scale topog maps, so for the first time ever you can get coverage of the entire state in one scale; no more shifting focus from 15-minute maps to 7 1/2, and vice versa.

many of the maps are relatively recent, replacing 15-minute maps that dated from the 40s and 50s, in some cases. And, in urban areas and other rapidly -changing places, such as lake regions, the 7 1/2 minute maps have been updated, sometimes more than once. These updated maps are especially interesting because they show new roads, lakes, subdivisions, and other changes in magenta, so you can see how much development has taken place from the first publication of the map to the latest revision.

For those who would like to see an actual photograph of the landscape, these are made by taking an aerial photograph directly over the center of each 7 1/2-minute quadrangle, the adjusting for distortion to produce a map that looks like a photograph, but has place names and the land net printed over it. For some purposes, these maps are more useful than topog maps. However, they do not have contour lines, so one cannot determine elevations from them.

Orthophotoquads are now available for most of the state, but not quite all of it. They are not as popular as topog maps, so when orders come in, a film master is used to make a print for the customer.

For the latest information about topog maps, call or write the Division at P.O. Box 250, Rolla, Mo. 65401-0250, (314)368-2125. If you call, ask for the Terry or Paula; they'll be happy to send you an Index map of available topographic maps, which also shows which areas are covered by orthophotoquads.

DNR's Division of Geology and Land Survey offers quick service and the same price available from the U.S. Geological Survey, so you won't be able to find a better price anywhere else. We take pride in our service, so please give us a call when you need anything in the map line.

OUTSTANDING MAPPER OF THE YEAR AWARD

The "Outstanding Mapper of the Year" award is to be presented yearly at the Annual Meeting and is to honor an individual who has displayed outstanding qualities in the cadastral mapping field. Nominations will be accepted by employers or peers, with the Awards Committee reviewing the applications and making a recommendation to the officers and board of directors for the award winner.

Nominations for the 1994 award will be accepted until July 8, 1994. Please keep in mind that nomination for this award requires no specific qualification but the person who makes the nomination should write a brief paragraph on why he or she feels that nominee merits the award.

APPLICATION FOR OUTSTANDING MAPPER OF THE YEAR AWARD - 1994

Name of Nominee: _____ Mail application to:

Employer: _____ **Loyola Vondera**
Employer's Address: _____ **Franklin County Assessor's Office**
P.O. Box 44

I believe this person should be nominated for Outstanding Mapper of the Year because: _____

Signed: _____ Address: _____

Telephone: (work) _____ (home) _____

THE ANNUAL CONVENTION

10th Anniversary Celebration

Aug 18-19

Holiday Inn Executive Center, Columbia, MO

The registration fee for the annual meeting will be \$70.00 for regular members and \$65.00 for student members. Registration fee includes 1994-95 annual dues along with Thursday lunch and evening buffet and Friday breakfast. Thursday night banquet includes casual western dress and will be served chuck-wagon style. There will also be a casino night and auction.

Please complete and mail prior to August 1, 1994. Note: every employee of an attending firm, company or office will need to register individually.

Full refunds will be made for cancellation requests prior to August 1, 1994. A cancellation fee of \$15.00 will be charged for requests received after August 1, 1994.

Rooms for the annual meeting have been set aside at a special rate for Wednesday and Thursday evening. Rates are single or double occupancy. Up to four in a room for \$57.00 plus tax. Individuals must contact the motel for their own reservations. Holiday Inn (314) 445-8531.

NAME	TITLE	JURISDICTION/FIRM
_____	_____	_____
WORK ADDRESS _____	HOME ADDRESS _____	
_____	_____	
WORK PHONE _____	HOME PHONE _____	
_____	_____	
CITY	STATE	ZIP
_____	_____	_____
CITY	STATE	ZIP
_____	_____	_____

REGULAR MEMBER	\$70.00	\$ _____
STUDENT MEMBER	\$65.00	\$ _____
I WILL BE UNABLE TO ATTEND THE 1994		
MEETING, ENCLOSED ARE MY 1994 DUES (\$15.00)		\$ _____

ADDITIONAL TICKETS FOR SPOUSE/GUEST AVAILABLE UNTIL AUGUST 9, 1994)

THURSDAY LUNCH	\$11.50	# _____	\$ _____
THURSDAY EVENING BUFFET	\$22.00	# _____	\$ _____
FRIDAY BREAKFAST	\$10.50	# _____	\$ _____

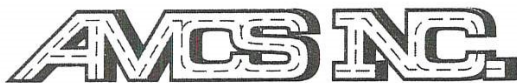
TOTAL REGISTRATION FEES	\$ _____
-------------------------	----------

MAKE CHECKS PAYABLE TO:
MISSOURI MAPPERS ASSOCIATION

MAIL TO:

ONA THOMAS
112 PARKVIEW DRIVE
GOLDEN CITY, MO 64748





ATWATER MAPPING AND CONSULTING SERVICES, INC.

MARK K. ATWATER
PRESIDENT

AM/FM/GIS Systems Services
Utility-Municipal-CATV

314 Sonderen • O'Fallon, Mo. 63366 • (314) 281-2114



M.J. HARDEN ASSOCIATES, INC.

Photogrammetry • Digital Mapping • AM/FM/GIS

John R. Novotney
Director Technical Services
Systems Division

1019 Admiral Boulevard
Kansas City, MO 64106

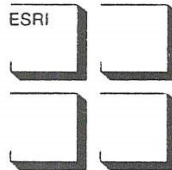
Tel: (816) 889-1165
Fax: (816) 471-1599

Walker & Associates
PHOTOGRAMMETRIC SERVICES

Celebrating 15 Years of Service

St. Louis, Missouri
(314)-343-6111

ESRI



Stephen Kinzy
Regional Office Manager

Environmental
Systems
Research
Institute, Inc.

820
South
Main
Street
Suite 207

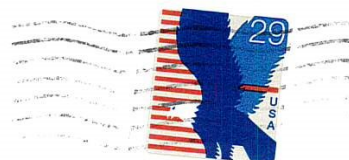
St. Charles
Missouri
63301

Office
(314) 949-6620
FAX
314 949 6735



**MISSOURI MAPPERS
ASSOCIATION**

P.O. Box 1692
Jefferson City, MO 65102



Barbara Kaszuba
Henry County
508 Price Lane
Clinton, MO 64735-

Expires: 08/01/94