



Volume 8, Issue 2, May 28, 1992

# MMA NEWS

MISSOURI MAPPERS ASSOCIATION  
P.O. Box 1692, Jefferson City, Missouri 65102

## 1991-1992 BOARD OF DIRECTORS

### **JIM MATLOCK, President**

Missouri Dept. of Natural Resources  
Division Of Geology Land Survey  
P. O. Box 250  
Rolla, Mo 65401-0250  
(314)368-2322

### **DEBBIE E. COCHRAN, PMM**

Vice President  
U. S. Geological Survey  
1400 Independence, Ms 507  
Rolla, Mo 65401  
(314)341-0928

### **BETTY WILEY, Secretary**

Jefferson County  
P. O. Box 433  
Hillsboro, Mo 63050  
(314)789-2283

### **PATRICIA F. CANTRELL, Treasurer**

Cape Girardeau County  
#1 Barton Square  
Jackson, Mo 63755  
(314)335-3790

### **CARL L. SOHN, Director PMM**

Franklin County  
P. O. Box 44  
Union, Mo 63084  
(314)583-6390

### **GENE ZIMMERMAN, Director**

St. Charles County Assessor  
118 N. 2nd St.  
St. Charles, Mo 63301  
(314)947-2617

### **DANIEL W. ROE, PMM,**

Immediate Past President  
Miller Associates  
409 Vandiver Drive, Bldg. 5, Suite 100  
Columbia, Mo 65202  
(314)443-1666

## 1992 ANNUAL MEETING DATE SET

The 1992 Annual Meeting has been set for August 13th and 14th. Casino Night will be the 13th. It will be held at the Holiday Inn Executive Center in Columbia. Bob Myers, State Land Survey, to be the main speaker. The return registration form will be in the July news letter.

If you have any candidates in mind for the yearly awards please notify Jim Matlock.

## BOARD MEETING

A Board Meeting was held Saturday April 18th in Rolla.

The main topic was district educational meetings. Some ideas were presented for subject material and the time of year for holding these meetings. Jim is checking into the use of State Park facilities for these meetings.

He reported that he has notified the IAAO of the annual meeting date and furnished them a list of the Executive officers.

## MMA LIBRARY

The State Tax Commission is in the process of allocating space for the MMA Library. Once the Library is in place any MMA Member may check out on a loan basis any of the publications available. A list of publications will be available in the July newsletter.

## WORKING TOGETHER

Bob Myers, State Land Surveyor, reports in Outlook (Spring 1992) - that with the advent of the Global Positioning System using the NAVSTAR satellites, the cost of establishing precise control monuments at a spacing needed by local governments is at hand. The control monuments now are spaced 6 to 10 miles apart resulting in the 1" = 2000' scale. The new distance of 2 miles in urban areas and 4 miles in rural areas provides the necessary control for aerial mapping at scales of 1" = 100' and 1" = 400'. All that is required to use them in mapping is targeting the actual control stations. This is due to a cooperative effort between the Missouri Department of Natural Resources and Local Government.

## LAND CHECK PRINT-OUT

Part of Lots One (1) and Two (2) of the Northeast qr. in Section Three and part of Lot Two (2) of the Northwest qr. in Section Two (2), all in Township Thirty-nine (39) North. Range Two (2) West of the 5th P.M., described as follows: Commencing at a BLM monument and stones in the Northeast corner of the Southeast qr. in said Section 3, thence North 86° 06' 39" West 750.31 feet to a BLM monument: thence North 0° 22' 58" East 507.59 feet to a BLM monument, thence North 0° 38' 03" West 621.39 feet to an iron rod in the centerline of a 40' road easement, for the point of beginning, of said road easement North 67° 45' 06" East 22.63 feet, North 79° 48' 56" East 53.22 feet. South 83° 33' 54" East 144.63 feet. North 73° 20' 15" East 131.06 feet, North 88° 14' 42" East 177.29 feet, North 71° 33' 54" East 121.56 feet, North 51° 02' 08" East 76.94 feet, North 42° 30' 08" East 81.29 feet, North 51° 24' 59", East 119.40 feet, North

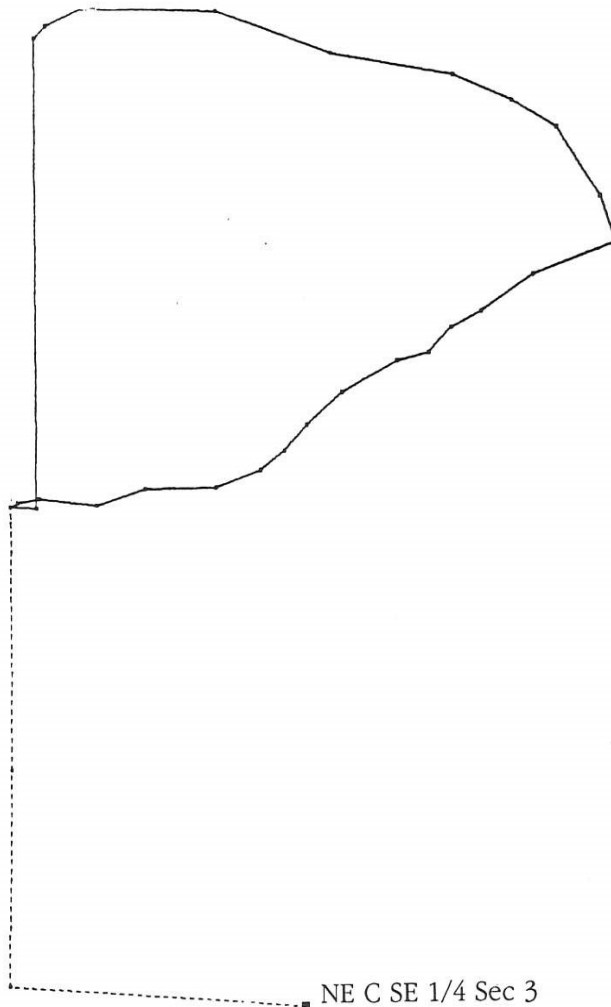
60° 26' 04" East 157.64 feet, North 76° 45' 14" East 81.44 feet, North 44° 11' 51", East 82.30 feet, North 63° 40' 23" East 83.97 feet, North 56° 46' 58" East 160.02 feet, and North 69° 46' 00" East 226.06 feet to the intersection of said centerline with the centerline of a 40' wide road easement, thence on the centerline of the last mentioned road easement North 22° 12' 08" West 110 feet, North 35° 37' 19" West 51.34 feet, North 53° 35' 45" West 198.09 feet, North 61° 49' 26" West 130.44 feet, North 68° 04' 39" West 163.60 feet, North 81° 05' 50" West 311.13 feet, North 71° 50' 25" West 312.71 feet, North 89° 15' 07" West 337.81 feet, South 65° 33' 15" West 100.62 feet and South 41° 37' 08" West 40 feet, thence South 0° 38' 03" East 1,093.10 feet to the point of beginning, according to plat of survey made by a Registered Land Surveyor, during the month of March, 1990, containing 28.19 acres, more or less.

SIDE	BEARING	DISTANCE	TO CORNER
1	S86.3631E	681.09 FT	2
2	N01.3641E	646.14 FT	3

SIDE	BEARING	DISTANCE	TO CORNER
1	N86.0639W	750.31 FT	2
2	N00.2258E	507.59 FT	3
3	N00.3803W	621.39 FT	4

P.O.B.	BEARING	DISTANCE	CORNER
4	N67.4506E	22.63 FT	5
5	N79.4856E	53.22 FT	6
6	S83.3354E	144.63 FT	7
7	N73.2015E	131.06 FT	8
8	N88.1442E	177.29 FT	9
9	N71.3354E	121.56 FT	10
10	N51.0208E	76.94 FT	11
11	N42.3008E	81.29 FT	12
12	N51.2459E	119.40 FT	13
13	N60.2604E	157.64 FT	14
14	N76.4514E	81.44 FT	15
15	N44.1151E	82.30 FT	16
16	N63.4023E	83.97 FT	17
17	N56.4658E	160.02 FT	18
18	N69.46E	226.06 FT	19
19	N22.1208W	110.00 FT	20
20	N35.1719W	198.09 FT	21
21	N61.4926W	130.44 FT	22
22	N68.0439W	163.60 FT	23
23	N81.0550W	311.13 FT	24
24	N71.5025W	312.71 FT	25
25	N89.1507W	337.81 FT	26
26	S65.3315W	100.62 FT	27
27	S41.3708W	40.00 FT	28
28	S00.3803E	1093.10 FT	29

CLOSURE	BEARING	DISTANCE	CORNER
29	N86.4431W	67.20 FT	30



26.798 ACRES • 1167331 SQ FT  
 PERIMETER 4584.15 Ft.  
 SCALE 1 in.=400 Ft.



### Corner Section Marker

Humphrey Parker and his brother John came to the area of Exira, Iowa in January 1880, to measure off sections of land. Humphrey had an injured foot, so he had to cut a young cottonwood sprout and was using it as a walking stick. When they wanted to mark the corner of the section they had measured, Humphrey sharpened the stick and drove it into the ground with a stone at the center of an intersection. It eventually sprouted and grew there. Now, 112 years later, that cottonwood tree is still growing.

### Did you know?

there are 57,800,000 square miles in the World;

3,679,245 square miles in the United States; and

69,697 square miles in the state of Missouri?

## DO YOU HAVE A LAND CHECK?

These instruments are very simple to operate. The operator need only to enter the metes and bounds and the computer does the rest. As you can see it automatically computes the acreage, square feet and perimeter. It will also enter the distances between points on the diagram if you so wish.

The cost was around \$1100 three years ago. This is used for straight transfers as well as splits. It only takes one person a few minutes to enter the necessary information and compare to the map parcel rather than comparing deeds to see if there are any footage differences.

SEE *LAND CHECK PRINT-OUT* ON FACING PAGE

## KAM ANNUAL CONFERENCE

The Kansas Association of Mappers annual conference will be held in Manhattan on October 11-13, 1992. The state of Kansas will be updating the approved vendors list for all mapping projects. They are requesting

\$180,00 to be budgeted for re-flights in 1993. A state cartographers certification program has been proposed that would promote qualified Kansas Cadastral mappers.

## IAAO ANNUAL CONFERENCE

IAAO Annual Conference - Each fall, the IAAO sponsors the International Conference on Assessment Administration, which brings together professionals in the property tax field from around the world to discuss assessing and assessment administration. Each year's program covers many diverse subjects and is designed to be especially relevant to current demands of the assessment profession. In addition tours and other optional social and entertainment events are planned for registrants, and spouses. One such conference is being held in St. Louis Missouri, September 13 through 16, 1992.

One of their special interest groups is the Mapping Section. This is a network of professionals involved in cadastral mapping and assessment. The Mapping Section is for draftsmen, cartographers, appraisers, systems developers, property tax

representatives and anyone in the fields of planning, recording, engineering, aerial photography, surveying, photogrammetry or consulting. Information to help you make decisions, find suppliers, and keep up with the field includes:

- quarterly newsletter
- information exchange
- referral service
- special mailings on vendors and their products, summaries of mapping systems and bibliographies
- an advisory group for technical advice whenever you need it
- seminars and workshops to provide you with the contemporary solutions to mapping problems
- networking opportunities
- membership directory
- social and educational programs

# WAKE UP TO MISSOURI

## THE GENUINE, UNOFFICIAL MISSOURI TRIVIA QUIZ

1. Missouri is one of only two states in the nation bordered by eight other states. What states border Missouri?
2. Which Missouri town was the eastern starting point of the Pony Express?
3. What was the former President Harry Truman's middle name?
4. Name the only city in the world with more fountains than Kansas City, Missouri.
5. Samuel Clemens (Mark Twain) was born on Nov. 30, 1835. Where was he born?
6. What is the tallest man-made national monument in the U.S.?
7. What was Missouri's best-known Civil War battle?
8. Where is Missouri's largest Amish community?
9. What popular item was introduced at the St. Louis World's Fair on July 23, 1904?
10. What famed frontiersman died at his son's home in Missouri in 1820?
11. Where can you find more opportunities to enjoy country music than in Nashville?
12. What "happy" bird has been recognized as the official bird of the State of Missouri?
13. The most violent earthquake ever recorded in North America centered on what Missouri town in 1811?
14. Where did Laura Ingalls Wilder write her "Little House" series of books?
15. What ended when J. D. Howard was shot in St. Joseph?

■(SEE NEXT ISSUE FOR ANSWERS)■



MISSOURI MAPPERS ASSOCIATION  
P.O. Box 1692, Jefferson City, Missouri 65102