



Volume 8, Issue 1, Feb. 27, 1992

MMA NEWS

MISSOURI MAPPERS ASSOCIATION

P.O. BOX 1692

JEFFERSON CITY, MISSOURI 65102

1991-1992 BOARD OF DIRECTORS

JIM MATLOCK, President

Missouri Dept. of Natural Resources
Division Of Geology Land Survey
P.O. Box 250
Rolla, Mo 65401-0250
(314) 368-2322

DEBBIE E. COCHRAN PMM, Vice President

U.S. Geological Survey
1400 Independence, Ms 507
Rolla, Mo 65401
(314) 341-0928

BETTY WILEY, Secretary

Jefferson County
P.O. Box 433
Hillsboro, Mo 63050
(314) 789-2283

PATRICIA F. CANTRELL, Treasurer

Cape Girardeau County
#1 Barton Square
Jackson, Mo 63755
(314) 335-3790

CARL L. SOHN Director PMM

Franklin County
P.O. Box 44
Union, Mo 63084
(314) 583-6390

GENE ZIMMERMAN, Director

St. Charles County Assessor
118 N. 2nd St.
St. Charles, MO 63301
(314) 947-2617

DANIEL W. ROE, PMM, Immediate Past President

Miller Associates
409 Vandiver Drive, Bldg. 5, Suite 100
Columbia, Mo 65202
(314) 443-1666

MRPC opposes plan to ax state survey

The Meramec Regional Planning Commission has gone on record as opposing a proposal by State Rep. Chris Kelly, chairman of the House Budget Committee, to eliminate the Missouri Division of Geology and Land Survey.

This state agency, headquartered on Fairgrounds Road, in Rolla, employs more than 100 persons and has an annual budget of nearly \$5 million.

In opposing the proposed cut, the MRPC board cited, "the importance of the agency in terms of the work it performs, the data it collects and its economic impact on the region."

Kelly has proposed eliminating the Division as one of a number of budget-cutting measures.

However, supporters of the agency have pointed out that only about half of the agency's budget comes from the state's general revenue while the rest is generated through fees and grants.

"Our \$2.2 million from general revenue will not even approach what is needed to make up the state's shortfall," said Jim Williams, director of the Division's Rolla office, in remarks made before the MRPC board.

Founded in 1953, the Division offers programs and services directly related to groundwater protection, public safety, statewide land survey support, oil and gas development, surface water flow assurances and flood protection.

In addition to these services the local offices also house a wealth of history and data.

Just knowing the information is there and available is like "money in the bank" to this mapper. Maybe we should each contact our representative and let them know how we feel.

(The above is a reprint from the Rolla Daily News 1-22-92)

Steeleville, Missouri in Crawford County is Named Nation's "Center of Population"

Each decade based on census data, the Census Bureau calculates the "center of population". This being the place where an imaginary, flat, weightless, and rigid map of the United States would balance perfectly if all 248,709,873 residents were of identical weight. The actual on ground location is 9.7 miles southeast of Steeleville.

"Plat This"

"The East half of the Southwest quarter, containing 80 acres, more or less, excepting therefrom 16 acres, more or less, described as follows: Beginning at the Southeast corner thereof, thence West to Little Meramec Creek and cornering in the bed of said creek, run thence North with the meanders of said creek to a certain branch or hollow, that is to say, the first spring branch thence up said branch two rods to a rock, thence Northward to a second hollow, thence East with variations of the compass to the East line of said tract, thence South to the place of beginning, leaving 64 acres more or less."

FRANKLIN county says the really amazing part about the above deed is that it actually planimeters out to exactly 64 acres!

Do YOU have any "items of interest" for our newsletter? The next time a deed or deed research strikes you as unusual or funny - please run a copy and send to me:

Jean Beasley
RT 2 Box 397
Steeleville, MO 65565

Of Interest: Donald Trump

Donald Trump's seventeen-acre estate in Palm Beach, Florida, Mar-A-Lago, has been valued at \$17.5 million, up \$3.5 million from last year. This will add more than \$82,000 to his tax bill, bringing the total to \$376,101. Trump has not challenged the new assessment. He lost his property tax appeal in 1989, when Palm Beach County valued his estate at \$11.5 million. Besides paying \$81,525 in additional tax, Trump had to pay about \$5,000 in court costs.

And then--

there was the merchandiser who intended to but up one acre in each of the 50 United States and deed **1 square inch** to each of their customers. But after questions like: "Can I will this land off?", "how much are the taxes?". aaaaaaahhhhhhhhhh! now this hit home. Taxes, deeds, mapping, "MAPPING"! Now who want to map one square inch of land? Luckily this business decided the legal aspects of the move was a much larger negative then the plus of the promotion.

But-----

we understand another business did adopt this idea. Do you suppose it is in the state of Missouri?????

Did you know

that pin points can be reconditioned?

Kohinoor Jewel Points at \$5.00
and Stainless Steel Points at \$3.00.

Contact:

Kohinoor Inc.
PO Box 68
Bloomsbury, New Jersey 08804

In attendance at the January 11, 1992 Meeting were:

Jim Matlock, President
Debbie Cochran, Vice-President
Betty L. Wiley, Secretary
Patricia Cantrell, Treasurer
Carol Rickman, Member

Carl Sohn, Director
Stan Balsman, Certification
Jean Beasley, Publication
Fred McGruder, Membership

Pat Cantrell gave the Treasurer's Report. After disbursements and income reports the present balance was \$1210.00.

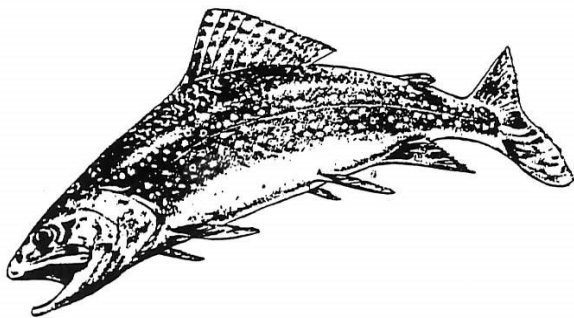
Jim Matlock is drafting a letter verifying IAAO certification of the Course Six Mapping Course sponsored by MMA.

Stan Balsman reported he has had 2 requests for the Professional Missouri Mapper Test to be given sometime in May of this year.

Carl Sohn gave the Education Committee report. Meeting are being planned for the very near future and may be held in public buildings rather than motel meeting rooms.

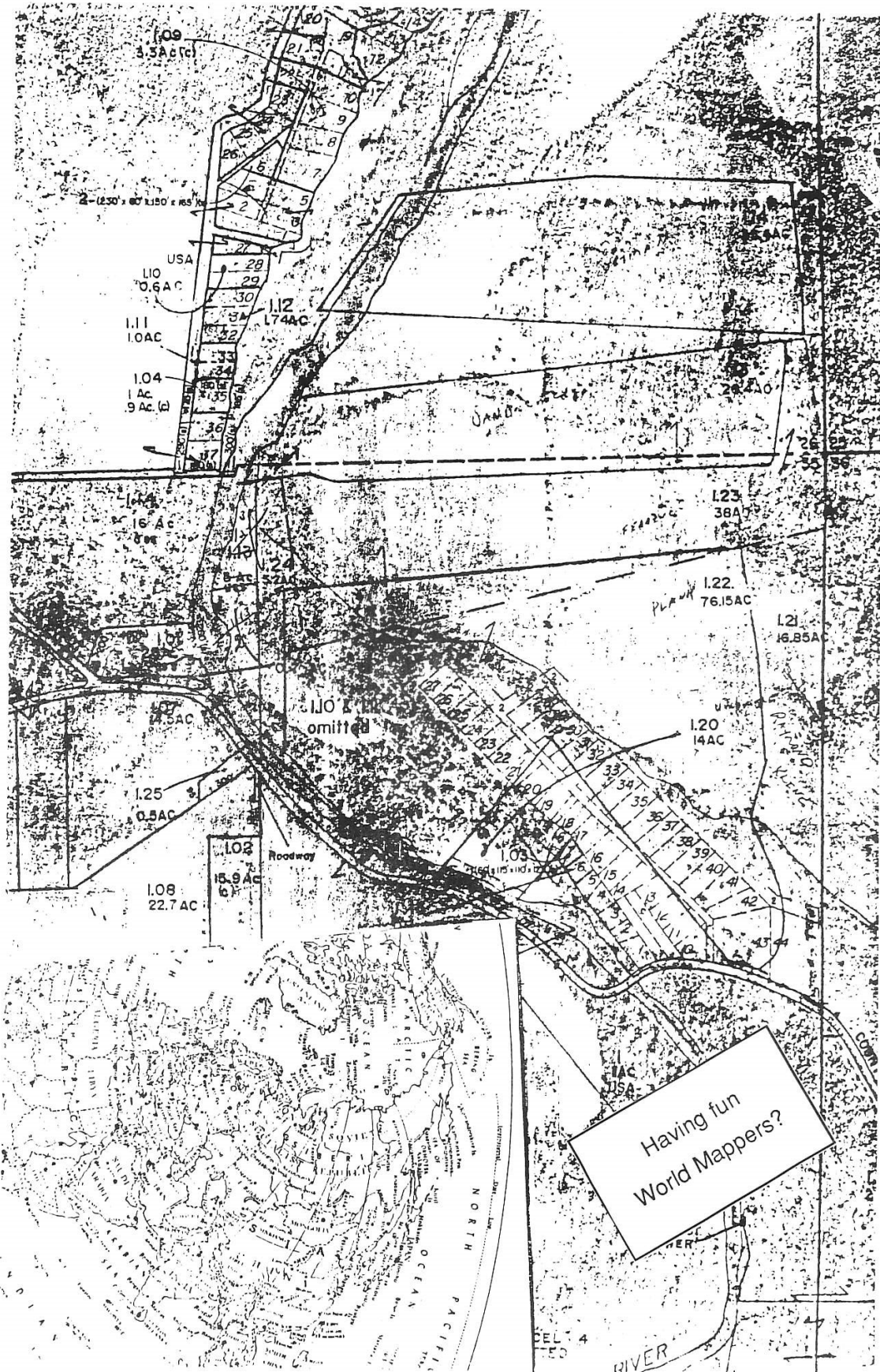
Although Ivan Hewitt (Legislation Committee) was not present he had sent word that legislation is pending for requirements of surveyors to put parcel numbers on surveys.

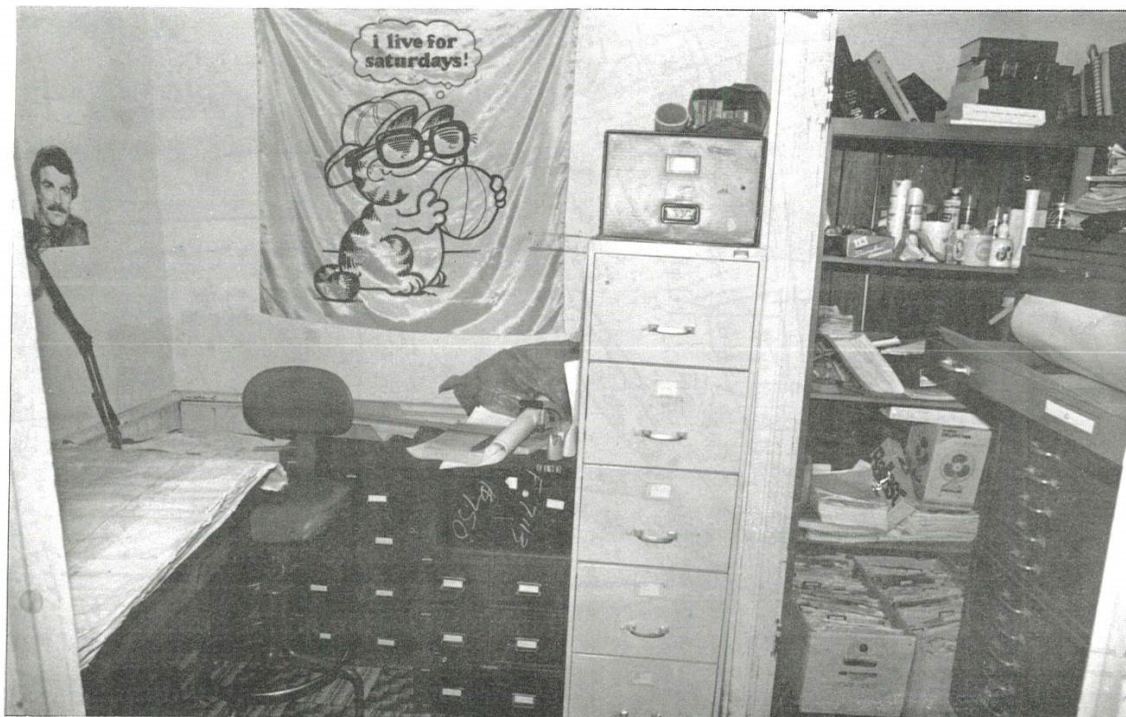
Fred McGruder reported that in August of 1990 MMA had 120 members. Our total membership is now up to 186.



MOUNTAIN TROUT FISHING

One of Nature's most exquisite creations is the mountain trout stream. These originate either as springs, gushing cold water from underground caverns, as melt water from winter snows or some combination of the two. But no matter which, all are exciting to explore on a golden summer's day. Birds nest in the willows growing along the banks and moose browse on the willow tips. Even on the hottest days, these alpine brooks are cool and the clear water is refreshing to drink. Even the sound of a small mountain stream is soothing and relaxing. Almost always a background of high ridges and peaks frames the scene. And no one can appreciate these waterways more than the serious trout angler.





Crawford County Mapping Room



MISSOURI MAPPERS ASSOCIATION

P.O. BOX 1692

JEFFERSON CITY, MISSOURI 65102

