



Volume 7, Issue 3, Nov. 26, 1991

MMA NEWS

MISSOURI MAPPERS ASSOCIATION

P.O. BOX 1692

JEFFERSON CITY, MISSOURI 65102

1991-1992 BOARD OF DIRECTORS

JIM MATLOCK, President

Missouri Dept. of Natural Resources
Division Of Geology Land Survey
P.O. Box 250
Rolla, Mo 65401-0250
(314) 368-2322

DEBBIE E. COCHRAN PMM, Vice President

U.S. Geological Survey
1400 Independence, Ms 507
Rolla, Mo 65401
(314) 341-0928

BETTY WILEY, Secretary

Jefferson County
P.O. Box 433
Hillsboro, Mo 63050
(314) 789-3911

PATRICIA F. CANTRELL, Treasurer

Cape Girardeau County
#1 Barton Square
Jackson, Mo 63755
(314) 335-3790

CARL L. SOHN Director

Franklin County
P.O. Box 44
Union, Mo 63084
(314) 583-8855

GENE ZIMMERMAN, Director

St. Charles County Assessor
118 N. 2nd St.
St. Charles, MO 63301
(314) 947-2617

DANIEL W. ROE, PMM, Immediate Past President

Miller Associates
409 Vandiver Drive, Bldg. 5, Suite 100
Columbia, Mo 65202
(314) 443-1666

THE 1991 ANNUAL MEETING

The 1991 Annual Meeting was held at the Executive Center in Columbia, Missouri August 15 and 16, 1991.

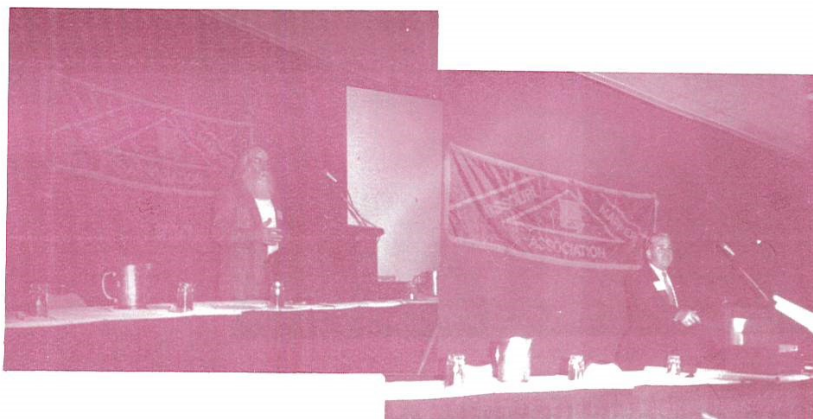
The Meeting convened with a welcome from President Dan Roe.

After comments from Mike Seabaugh and Mary Ann Kaiser the annual business meeting was conducted followed by Election of new officers.

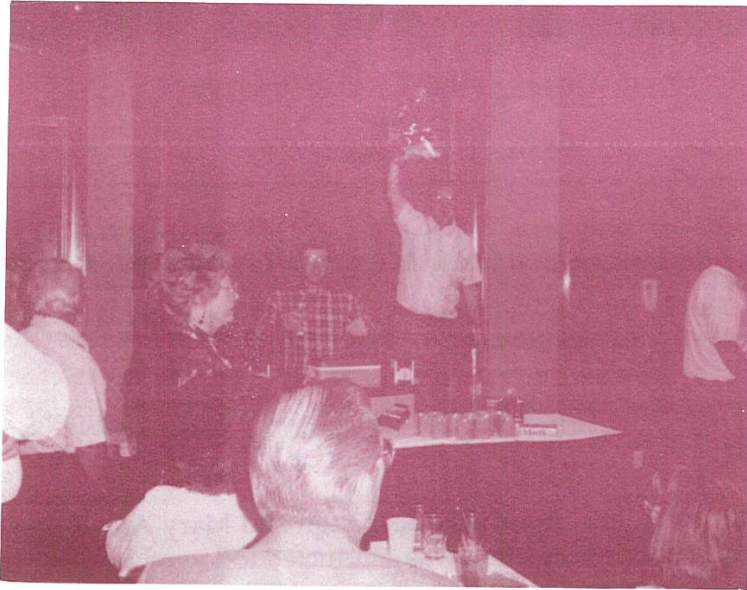
In the afternoon Norman L. Brown P.E., L.S. with the Missouri Department of Natural Resources gave a very informative and interesting history on surveying.

Friday, after committee meetings and a speech from Bill Brenner (Missouri State Tax Commission) the Awards were presented.

Kathy Edwards from Franklin County received the Education Award, "Fireball" Award was presented to Debbie Cochran and Mapper of the year to Carl Sohn who also received the PMM Award!



A MESSAGE FROM THE PRESIDENT



The MMA Executive body held its first of four regular scheduled meetings in Rolla Oct. 5, at the Division Geology and Land Survey Office. These meetings are open to all MMA Members. Should you want to attend contact a Board Member for the time, date, and place where the next meeting will be held. I welcome and the Board welcomes any type of manner of participation you care to contribute: an opinion, a complaint, praise, or even better some of your time to help us make our organization better and to better serve, our only reason for being here is you! So call, write, come to a few meetings and let us know what you want.

I hope all of you had a good time at the annual meeting this year particularly casino night. I don't think I ever had so much fun losing money as I did that night. But for some losing was not in the cards in fact they won \$200,000, \$300,000, and \$500,000 dollars (sure they did).

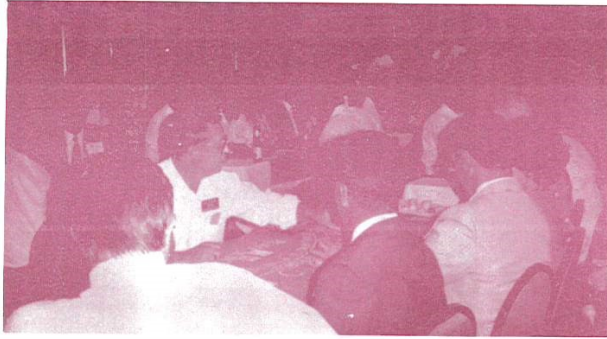
All of you should find something of value in this years activities. Plans are underway now for regional workshops in basic drafting. The legislative committee is studying the feasibility of putting parcel numbers on all surveys prior to or during the recording process.

Jim Matlock, President



\$6200 for a pair of sockies??

Can anyone identify this finger?



MMA COMMITTEES

ANNUAL MEETING COMMITTEE

Randall Mayden, Chairperson
Don Cleveland
Craig Schnebelen

AWARDS COMMITTEE

Joe Bennett, Chairperson
Linda Crane

CERTIFICATION COMMITTEE

Stan Balsman, Chairperson
Floyd O. Evans
Ken Eftink
Dan Roe
Carl Sohn

PUBLICATIONS COMMITTEE

Jean Beasley, Chairperson
Vickie Beezley
Michelle Helms

EDUCATION COMMITTEE

Kathy Edwards, Chairperson
Tim Houtchens
Rich Sohn
Carl Sohn
Cy Smith

LEGISLATIVE COMMITTEE

Ivan Hewitt, Chairperson
Georgia Spurgeon
Gary Higgs
Darrel L. King

MEMBERSHIP COMMITTEE

Fred McGruder, Chairperson
Mary Ann Kaizer
Randy Dieck
Bruce Fisher
Wayne Overkamp
Marti Buckner

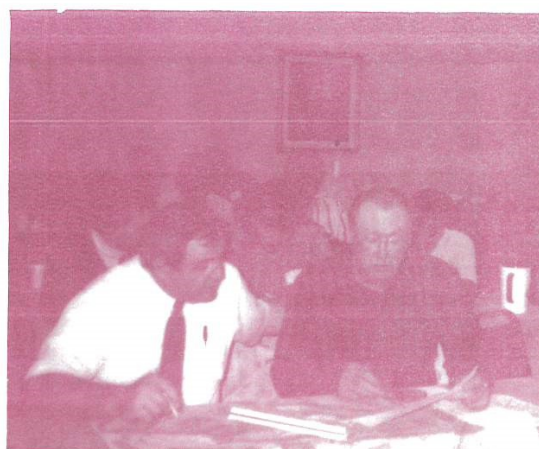
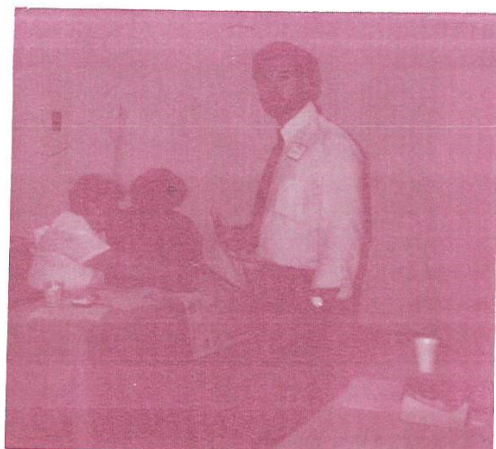
MISSOURI MAPPERS ASSOCIATION CERTIFICATION EXAMINATION

The Missouri Mappers Association PMM Certification Examination has been scheduled for sometime in April or May of 1992. If you meet the following designation requirements, you are eligible to take the 7-hour comprehensive and subjective examination:

1. Have five (5) full years of cadastral mapping experience or its equivalent.
2. Be engaged in the use, production or maintenance of cadastral maps.
3. Attended a minimum of 30 hours of study in mapping, surveying or a closely-related subject.

In order to be scheduled for examination, you must complete a Certification Application and submit information verifying that you meet the requirements listed above. This information must be received by the Certification Committee no later than January 31, 1992.

If you would like to receive an application or have any questions, please contact Stan W. Balsman, PMM Certification, Committee Chairman, P.O. Box 366, Perryville, Missouri 63775 (3214) 547-8357.



During the month of October regional workshops were held throughout the state of Missouri at four different locations

The instructor for the workshop entitled "Basic Mapping and Aerial Interpretation" was Carl Sohn, PMM, Mapping Supervisor of Franklin County, with the assistance of Kathryn Edwards, Education Committee Chairman.

The workshops were well received with 20 in attendance at Cape Girardeau, 21 attended in Springfield and Independence and 26 attended in Columbia.

We welcomed into the Missouri Mappers 40 new members during the four workshops.

Thanks to those who helped to make the workshops a success.

A Spring workshop is being planned. Please send your suggestions for programs to Kathryn Edwards, P.O. Box 44, Union MO 63084.



MISSOURI MAPPERS ASSOCIATION

P.O. BOX 1692

JEFFERSON CITY, MISSOURI 65102