

***President**

James Theisen

***President Elect**

Matt Sorensen

***Secretary**

Arron Kettle

***Treasurer**

Lisa Perry

***Director 2019-2020**

Amanda Bybee

***Director 2019-2021**

Tonja Friend

***Past President**

Sue Ann Stokes

Inside this issue:

Meeting Minutes 2

St Clair Co
Upgrades to GIS 3

Treasurer's Report 4

Committee Reports 6

Jefferson City
Tornado Damage 8-9

History of Assessment Mapping, MO 10-11

MMA Membership
Application '20-'21 15

MMA News

Volume 36 Issue 2

July 2020

Letter from the President

Hello Mappers!

It has been my pleasure to serve as the Missouri Mappers Association President this year. Although it has been a very unique and challenging year, myself and the board worked hard to represent you the best we could.

It was not an easy decision for the board to cancel this year's MMA Conference. We understood that for most of us, it is the best opportunity to network and attend classes that have an impact in the mapping community. But it was the right decision for the health of our membership as well as our communities. I look forward to seeing some of you at the upcoming regional meetings and all of you at next year's annual conference.

Please share any ideas, concerns, comments and/or questions you may with the Executive Board. We value your feedback!

Respectfully Submitted,
James Theisen
MMA President

Important News

**The difficult decision was made to cancel our
36th Annual MMA conference.**

We will be back bigger and better than ever in 2021!!!

Mark your calendars now!!!

August 3rd - 6th, 2021

***Oasis Hotel and Convention Center
Springfield, MO***

******Please see page 14 for Special Announcement******

**Missouri Mappers Association Board Members Meeting April 16th 2020 1:30pm
Special Meeting for Information and Summer Event Discussion**

Call in # 877-396-8103
Code # 73105555

Attendance-

James Theisen – Ordered the meeting
Matt Sorensen
Arron Kettle
Lisa Perry
Amanda Bybee
Sue Ann Stokes

James T. called the meeting to order.

First topic for discussion was the Covid-19 and how it would effect the 2020 conference.

Amanda B. made a motion to cancel the 2020 conference

Lisa P. 2nd the motion

Motion was voted on and passes

Decisions made on how to precede now that is conference will not be held.

There will be an e-mail election for any and all open offices

Membership forms will be sent out

All vendors will be contacted and checks returned

There will be a nomination committee consisting of

Amanda Bybee

Jody Paschal

Matt Sorensen

All presenters will be contacted

All committees and committee chairs will remain the same for 2021 conference as listed for previous year unless the individuals express a desire to step down.

A confirmation of cancellation will be obtained from Oasis Hotel.

The conference for 2021 proposed dates are July 27th – 30th and will be decided at a later time.

Meeting was adjourned.

Next scheduled meeting is May 13th 2020 at 9:30 am

Arron Kettle

2019-2020 MMA Secretary

St. Clair County Upgrades to GIS

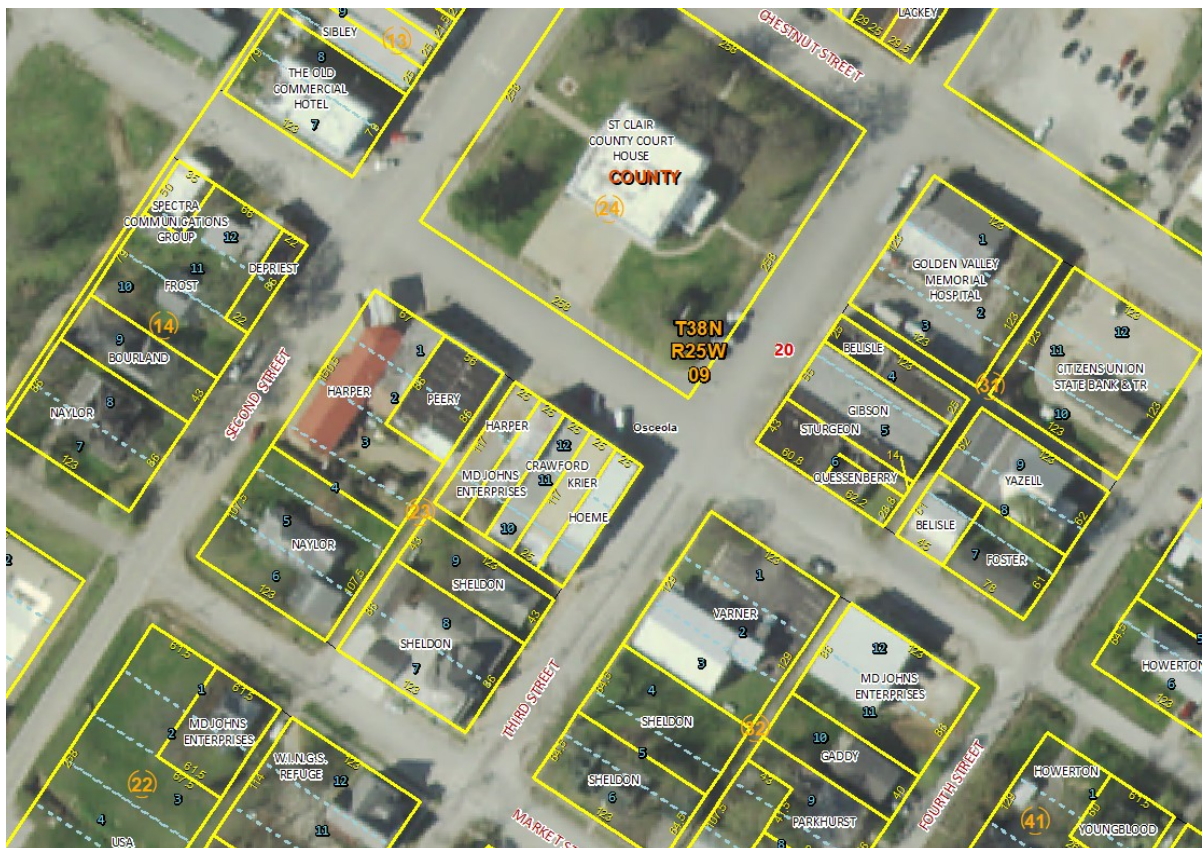
After years of maintaining parcel edits on mylar maps, St. Clair County, Missouri staff will now have greater workflow efficiency thanks to a comprehensive GIS program and web-based GIS from Midland GIS Solutions. This project will bring decades of hand-written map edits and the county's CAMA data into a centralized GIS. This will allow staff to view and maintain all GIS map data in an intuitive GIS interface.

The GIS program will eliminate map edit redundancy and greatly increase efficiencies within the Assessor's office. The county will have the ability to enter metes and bounds descriptions from deeds or recorded surveys directly into the GIS software to ensure mapping accuracy.

As in every county mapping project, Midland GIS acquired available survey research to assist with data layer development. This method provides a solid foundation for the GIS program to ensure an accurate and long-term solution. Available data in the county's newly developed GIS will include parcel boundaries, lots, blocks, subdivisions, road centerlines, rights-of-way, water boundaries, city limit, sections, Township & Range boundaries, MoDOT bridge data and FEMA flood data. Property values, legal descriptions, acreage and deed information will also be accessible within the GIS. Additional data layers and functionality can easily be added as necessary.

Midland GIS staff will conduct an on-site training session with St. Clair County. Client training remains a Midland GIS standard to ensure the GIS remains a functional tool for county departments that rely on the most up-to-date information.

Visit www.midlandgis.com for more information about how Midland GIS can provide mapping and GIS solutions for your county or municipality.



MISSOURI MAPPERS ASSOCIATION
TREASURER'S REPORT
February 05, 2020

BALANCE as of Dec. 18, 2019 \$28,444.06

RECEIPTS \$0.00

BALANCE + RECEIPTS \$28,444.06

DISBURSEMENTS \$28.42

 ANNUAL MEETING \$0.00

 AWARDS \$0.00

 POSTAGE \$0.00

 HISTORICAL \$0.00

 EDUCATION \$0.00

 DONATIONS \$0.00

 ADVERTISING \$0.00

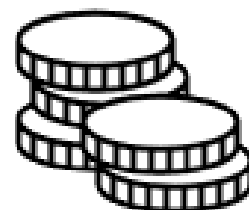
 MISC. EXPENSES \$0.00

 MILEAGE \$0.00

 INFO TECH \$0.00

 CONFERENCE CALLS \$23.42

Misc. Service Fee for Checking \$5.00



BALANCE as of Feb. 05, 2020 \$28,415.64

Did You Know?

Africa is the only continent that is in all four hemispheres.

Istanbul is located on two continents, Europe & Asia.

The Amazon River is the fastest flowing river in the world.

The Grand Mesa in Colorado is the largest flat-top mountain in the world.

Ontario's Wasaga Beach is the longest freshwater beach in the world.

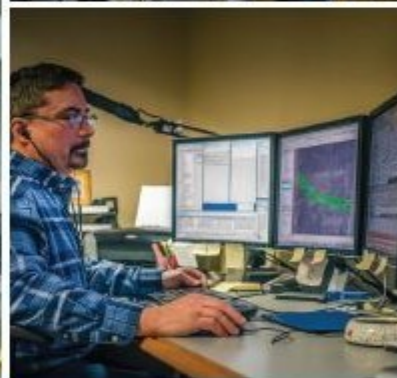
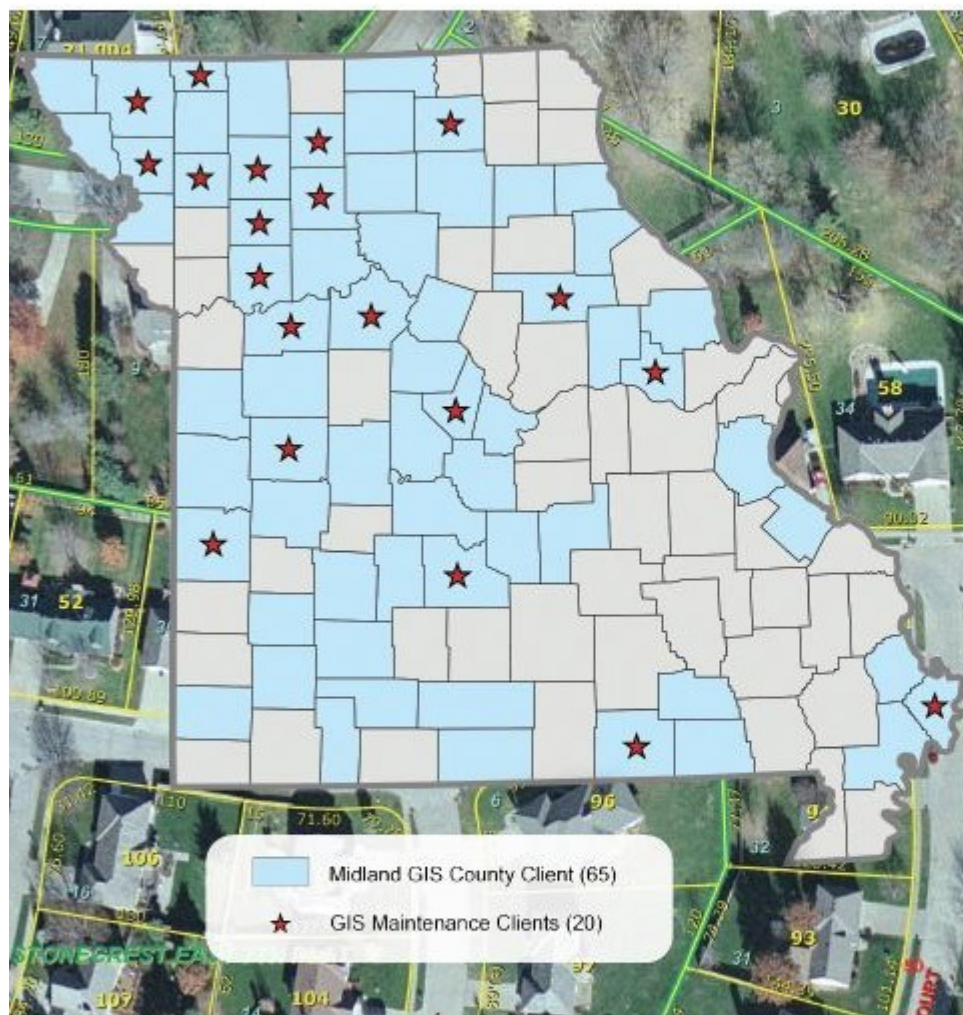
The highest point in Oregon is Mount Hood.

Greenland is considered to be the largest island on Earth.



Discover a GIS solution for
your County or City at
www.midlandgis.com

Proud member of Missouri Mappers since 2005!



Midland GIS Solutions has been mapping Missouri for more than 20 years and provides a wide-range of dependable and accurate GIS solutions for every aspect of local government. We look forward to serving you for many years to come!

Midland GIS Solutions

501 N. Market
Maryville, MO 64468
660.562.0050



Historical Committee Report:

I have finally gone through all the historical records and located the newsletters and conference books we have on hand.

At some point soon I will be sending out an email or newsletter article asking the membership if they have a copy of the ones we are missing.

Below is an outlined plan of what I would like to accomplish with the historical records on the website this year by matter of importance.

1. All Newsletters back to Volume 1 Issue 1
2. All Annual Meeting Minutes
3. All Board Meeting Minutes
4. All Conference Booklets

Once I have located as many as I can, I will contact Ryon about the easiest way to get them on our website.

The next phases will be Awards, PMM's and identifying members in historical photos.

Respectfully Submitted,
Sue Ann Stokes
2019-2020 MMA Historical Committee Chair

Media Committee Report:

The next newsletter will be going out by the end of June.

I will be sending out emails soon asking for article ideas and committee reports.

Respectfully Submitted,
Sue Ann Stokes
2019-2020 MMA Media Committee Chair

West Central Chapter Report:

No news is good news or so they say. Our chapter had to cancel our spring meeting due to the Covid-19 closing of the colleges. We have had no news about if we will be able to reschedule the trip that was organized by North West President Matt Sorensen. Hope to see everyone soon.

Stay Happy and Safe,
Arron Kettle
2019-2020 West Central Chapter Chair



Surdex is an approved Statewide Geospatial Services Provider

Photogrammetric Mapping Products and Services

Contact Surdex to find out more information on how to use the Missouri Contract for your future ortho imagery, mapping and LiDAR projects.

Missouri Contract # CS170285002
Tim Donze , VP Business Development
surdex.com • 636-368-4400



SURDEX
CORPORATION

Your Strategic
Geospatial Resource



Tiffany Rogers

Sales Representative

Office **417-869-7316**
Cell **417-849-3828**
Email **trogers@spfdbblue.com**
www.spfdbblue.com

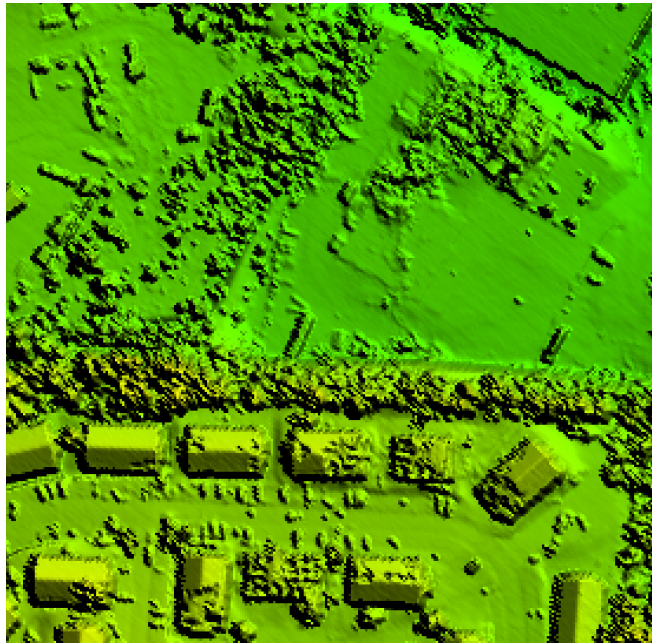


Surdex Captures Jefferson City, Missouri, Tornado Damage

Rapid Response Disaster Mapping Process Provides Imagery and Lidar within 24 Hours

On May 22, 2019, an EF-3 tornado hit Jefferson City, Missouri. Within a few hours, several geospatial entities within the state established a data acquisition plan. Because of the emergency nature of this project, it was essential to provide data as quickly as possible to assist first responders in relief and recovery activities.

The project included two datasets: 6" Ground Sample Distance (GSD) aerial imagery and 2 points per square meter (ppsm) lidar data. Surdex acquired both datasets for 56 square miles of damaged area and posted both datasets to a web service within 24 hours of acquisition.



Strong Geospatial Network Facilitates Quick Acquisition

The Missouri GIS Advisory Council (MGISAC) enabled communication between various geospatial entities in the state, which worked together to quickly develop a plan for aerial data acquisition. The State of Missouri had an existing Statewide Contract for Photogrammetric Mapping Products and Services with Surdex. This contract enabled the State to reach out to Surdex to relay the acquisition plan and establish a project on May 23rd, just hours after the tornado. The strength and resolve of this network enabled acquisition to commence as soon as possible after the tornado—on May 24th. Surdex sent two aircraft to the area in order to simultaneously capture imagery and lidar data.

Specialized Processing and Data Sharing Maximize Data Utility

After collecting both datasets, Surdex implemented our rapid response disaster mapping procedures so that we could hand off the data to first responders and others who needed to assess the damage as soon as possible. We posted orthoimagery to our web service *within 12 hours* of acquiring the data, and lidar data *within 24 hours* of acquisition. In addition to Surdex's web service, two other servers hosted the disaster mapping data. Missouri Spatial Data Information Service (MSDIS) and Esri posted the orthoimagery and lidar data to their sites, enabling a larger number of users to view the data simultaneously without risk of excessive lag or server crashes. Providing these datasets quickly using a reliable network enabled more effective response and recovery efforts by first responders, as well as more accurate damage assessment.

www.surdex.com • 636-368-4400 • info@surdex.com



NAME THE NEWSLETTER

The following have been proposed as names for our publication. As announced, we will vote on our favorite during the annual meeting and the individual who submitted the winner will receive a free second year membership.

- A. Cartographer's Chronicle
- B. The Triangle
- C. Hot Line
- D. Registration Tick
- E. "Sho-Me-News"
- F. Cartographer's Benchmark
- G. M.M.A. "News"
- H. The Mappers
- I. Cadastral Mapping Newsletter



Ever wonder where MMA News came from?

MMA Newsletter Volume 1, Issue 2, June, 1985

Roger Arnzen, Cape Girardeau County was the winner and MMA News was born!!

History of Assessment Mapping in Missouri

By Dan Roe, PMM

Prior to 1980, there was no organized standard for mapping throughout the state of Missouri. Some of the larger counties in the state had a mapping system in place. A few counties utilized the 660 scale USDA hard-copy aerial photographs and drew property lines on them. The Missouri Supreme Court Decision of *State ex rel. Cassilly v. Riney*, 576 S.W.2d 325 (Mo banc 1979) found the system of assessment in St. Louis County to be in violation of the uniformity provisions of the Missouri Constitution. The Supreme Court further stated that the State Tax Commission had the responsibility to resolve the assessment inequities in that county, and throughout the state where they exist, and they possessed administrative powers to do so. This led to the first mandated statewide reassessment program that was completed and implemented in 1985.

In developing the reassessment program, the State Tax Commission recognized that assessment maps were one of the key components to an effective assessment system. They knew that maps would help to determine the location of the property, indicate the size and shape of each parcel, ensures that all parcels are inventoried, and reveal its relation to pertinent features that affect value. Maps are an extremely valuable record in an assessor's office and were worth the significant investment.

GIS is said to have begun in 1832 when Charles Picquet, a French geographer and cartographer, created a map by in which the 48 districts of Paris were represented by color gradient according to the percentage of deaths from cholera. In 1854 British physician, John Snow began adding the locations of Cholera cases to a map of London and saw they were commonly found near a drinking water pump that was located nearby to a cesspit of sewage contaminated by Cholera. This was the beginning of spatial analysis.

From the time of John Snow into the 1950's, maps remained simple and were used mainly for routing, new development planning and locating points of interest. Sieve Mapping, a system where each feature was drawn on a separate sheet of transparent paper and then the layers were overlain on each other and viewed using a light table, was being used for planning purposes. However, calculating areas was next to impossible, data was often inaccurate, and measuring distance was cumbersome.

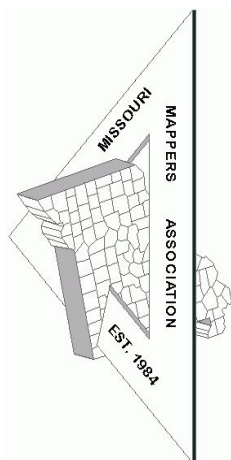
The developments in computing from 1960 to 1975 spurred the advancement of GIS. Roger Tomlinson, a Canadian is credited with the development of the Canadian Geographic System in 1964. The US census Bureau utilized some of the principals of GIS that led to the digital input of the 1970 Census using the format GBF-DIME (Geographic Base File – Dual Independent Map Encoding). In the mid 1970s, Harvard Laboratory Computer Graphics developed the first vector GIS. They called it Odyssey GIS. Esri's ARC/INFO used this framework that led to the commercialization of GIS software. In 1982, ARC/INFO for minicomputers was launched.

As the State Tax Commission began planning and developing the “Specifications For Ownership Mapping” the use of a GIS was not considered for creating and maintaining the assessment maps. The specifications were written to create maps using Pelican (or equivalent) ink on .004”, double matte, polyester stabilized Mylar (or equivalent).

The first step in the development of the existing mapping program was the acquisition of aerial photography. Aerial photography provided a complete pictorial record of all land within the county and indicated the type of improvements to the land, their location, the use of the land, and other features relevant to the assessment process. To be an effective tool the aerial photography must be relatively accurate. At this time, this was a specialized field requiring the employment of skilled technicians using precision equipment at a significant cost. For the statewide reassessment completed in 1985, the State Tax Commission utilized two types of base photography. Rectified Photo Enlargements in areas with a minimal ground relief, small towns, and rural in nature were provided with rectified photo enlargements. Orthophotography was only provided in highly developed areas and areas having considerable ground relief.

The creation of the cadastral map was recognized as a highly specialized activity requiring skilled personnel. Most counties did not have staff capable of completing the mapping in-house so the counties contracted with various sources such as surveyors, engineers, or title companies. In most cases, it was the responsibility of the vendor to gather the deeds, plats, and other information needed to compile an overlay. Once the overlay was completed, the last step was the drafting of the final ownership map.

In Missouri the development and installation of the cadastral mapping system was costly. Once the mapping system had been installed, it was an absolute necessity to carry on with a maintenance program. Otherwise, the initial effort and expense in installing would have been negated in a year or two. Today, the majority of counties have converted to digital mapping and are no longer keeping the maps updated manually.



OUTSTANDING BOSS OF THE YEAR APPLICATION

The "Outstanding Boss of the Year" award is presented at the Missouri Mappers Association annual conference. It is presented to honor the "Top Boss" who has displayed outstanding leadership abilities. Nominees must be a current member of MMA and have been a member for at least one year. Nominations should explain why the nominee merits this award.

Name of Nominee: _____

Nominee's Position: _____

I believe _____ should be nominated for "Outstanding

Boss of the Year" because _____

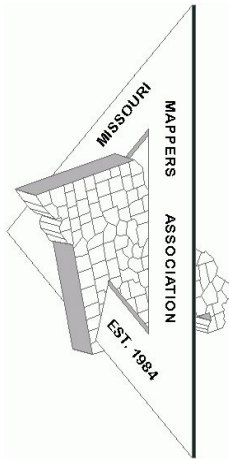
(Continue on additional sheet if necessary)

Your Name (Printed): _____

Signature: _____

Phone Number: _____ Email Address: _____

Mail Application to:
 Alice Lee
 PO Box 103
 Morse Mill, Mo 63066
 Or email to: alee@jeffcomo.org



MAPPER OF THE YEAR APPLICATION

The "Mapper of the Year" award is presented at the Missouri Mappers Association annual conference. The award is designed to honor an individual who has displayed outstanding abilities in the mapping field. Nominees must be a current member of MMA and have been a member for at least one year, and be technically proficient in mapping techniques and standards. Nominations should explain why the nominee merits this award.

Name of Nominee: _____

Nominee's Employer and position: _____

I believe _____ should be nominated for "Mapper of the Year" because _____

(Continue on additional sheet if necessary)

Your Name (Printed): _____

Signature: _____

Phone Number: _____ Email Address: _____

Mail Application to:

Alice Lee

PO Box 103

Morse Mill, Mo 63066

Or: email to: alee@jeffcomo.org

Due to the cancellation of this years conference we find ourselves pivoting in a new direction regarding our Missouri Mappers Association Annual Business Meeting.

The Executive Board is officially posting the following nominations.

Treasurer — Lisa Perry
 Secretary — Arron Kettle
 Second Year Director — Carla Palmer
 First Year Director — Vacant

The following will move forward to their new positions on the Executive Board.

President — Matt Sorensen
 Vice President — Amanda Bybee
 Past President — James Theisen

If there are no other nominations from the membership by July 24th, 2020 all MMA 2020-2021 Executive Board positions will be appointed by Acclamation.

***Please contact President James Theisen, gis@pettisco.com if you have a nomination ***

Current Committee Chairs and members will be continued for the 2020-2021 year.

Please contact incoming President Matt Sorensen, sorensen@midlandgis.com if you do not wish to remain on/or want to sign up for a committee

Committee Members 2019-2020

Annual Conference

Jody Paschal *Chair*
 Alice Lee
 Lora Miller
 Arron Kettle
 Brenda Dryer
 Lisa Mendpara

Awards

Alice Lee *Chair*
 Lisa Mendpara

Certification

Alice Lee *Chair*
 Stephanie Hyder-Stevens

Education

Brenda Dryer *Chair*

Historical

Sue Ann Stokes *Chair*

Legislative

Bob Boyer *Chair*
 Chrissy Gillis
 Roger W Hurlbert

Media

Sue Ann Stokes *Chair*

Membership

Tonja Friend *Chair*

**Please remember to send in your
 Annual Membership Application.
 It's usually included in the conference fee and
 will be easy to overlook this year.**

Missouri Mappers Association Membership Application

2020-2021 Dues (Expires August 1st 2021)

First Name _____		Last Name _____	
Government Organization, Company or Consultant Name _____		Title _____	
County _____			
Employment Address _____		City, ST Zip _____	
Home Address _____		City, ST Zip _____	
Email _____	Work Telephone _____	Home Telephone _____	
Newsletter Mailing Preference _____ E-mail _____ Home _____ Work _____			
MMA will email your copy of the bi-annual newsletter unless otherwise indicated on this form.			

Membership Type & Annual Dues (Please Check One):

_____ **Regular Member (\$15)** – Mappers, Cartographers, Mapping Supervisors, Assessors, Surveyors, Geographic Information Systems (GIS) personnel and other persons involved with mapping.

_____ **Subscribing Members (\$25)** – Individuals or firms not eligible for regular membership that are interested in property mapping.

_____ **Student Member (\$5)** – Any student that attends a University, College, Vocational Institute or other recognizable School not eligible for other membership and interested in property mapping.

**Membership dues for Missouri Mappers Association are not tax deductible as a business expense.*

I hereby make application for membership in the Missouri Mappers Association. If admitted, I will abide by its by-laws and support its objectives. I have enclosed my membership dues with this application.

Signature: _____ Date: _____

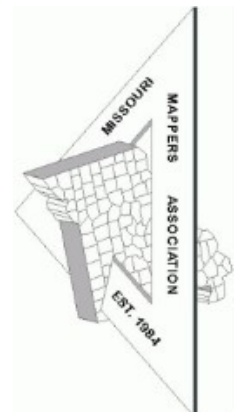
***Please make checks payable to Missouri Mappers Association
Mail Form and Payment to:***

OFFICE USE ONLY:

Date Received: _____

By (Initialed): _____

**Tonja Friend
MMA Membership Director
16317 US Hwy 160, Suite C
PO Box 1569
Forsyth, MO 65653**



WANTED

**The Historical Committee is looking for the following
MMA Newsletters and
Conference Books.**

Newsletters:

1986 Volume 02 Issue 4
1987 Volume 03 Issue 1, 3, 4
1988 Volume 04 Issue 2, 3, 4
1989 Volume 05 Issue 1, 2, 3
1990 Volume 06 Issue 1, 3, 4
1991 Volume 07 Issue 2, 4
1992 Volume 08 Issue 1
1993 Volume 09 Issue 1, 2, 3, 4
1994 Volume 10 Issue 1, 2, 3, 4
1995 Volume 11 Issue 1, 2, 3, 4
1996 Volume 12 Issue 1, 2, 3
1997 Volume 13 Issue 1, 2, 3, 4
1998 Volume 14 Issue 1, 2, 3, 4
1999 Volume 15 Issue 1, 2, 3, 4
2001 Volume 17 Issue 1, 2, 3, 4
2002 Volume 18 Issue 1, 2, 3, 4
2003 Volume 19 Issue 1, 2, 3

Conference Booklet/Program:

1987
1992
2004
2012
2013

If you have a copy you would like to donate to the Historical Committee Archival Project please forward to Sue Ann Stokes. sueann.stokes@mcdonaldcountymo.gov

**We have plenty of ad space
available for upcoming issues.**

Business Card	\$25 per issue
1/4 Page	\$50 per issue
1/2 Page	\$75 per issue
Full Page	\$100 per issue

**For your advertising needs contact
Sue Ann Stokes
sueann.stokes@mcdonaldcountymo.gov**

**Don't forget to like us on Facebook
Visit our website @ www.missourimappers.org**