

MISSOURI MAPPERS ASSOCIATION

VOLUME 23, ISSUE 4

OCTOBER 2007

LETTER FROM THE PRESIDENT, SARAH MURRAY

INSIDE THIS ISSUE:

EDUCATION	2
HISTORICAL	2
PMM	3
CONFERENCE	3
PUBLICATION	4
MEMBERSHIP	11
AWARDS	13

Wow! What an honor it is, to be your 2007/2008 president. I would like to start off by thanking all of you, not just for your votes, but for your belief in leadership and the continuation of the MMA as a reputable association. I once read that a good leader is only as well versed as the ones being lead. It brings me great pride to be a member of this renowned team. I look forward to a successful year and I think that with a little enthusiasm and commitment from everyone within the MMA that this can be a phenomenal year of growth.

There are a few objectives that I would like to see the board, committee chairs and members take on as major initiatives to enhance the excitement and belief that we all have in this association. A few of the most important initiatives are based around an educational thematic. We, as an organization have a vast amount of knowledge and the opportunity to share that knowledge is indispensable.

to ask for the commitment of our members in organizing, attending and being actively involved in educational workshops and committee meetings. Sharing information, ideas and collaborating as a community can only bring excitement and enhanced education among all of our members. I would like to see us take pride in our association, PMM designations and extending education and designations into the inking as well as digital mapping community throughout the state.

I believe that the association is also ready to investigate the idea of an online portal for educational purposes that can include training, curriculum and some coursework along with tips and tricks so that we can all expand and share our knowledge for personal and professional growth. I hope this helps expand our membership and give the designations within it even more value within professional societies.

these goals and objectives in the next year with commitment and dedication. That is what my grandmother used to tell me repeatedly when working on the farm. Be dedicated and committed and anything is possible, even growing corn in the red clay of Tennessee. I hope that the next year proves her right as it has in years past.

I look forward to an exciting year!

Keep on Mapping,

Sarah Murray
MMA President
2007/2008
smurray@schneidercorp.com
423-650-0191

With that said, I would like We can accomplish all of

Education

Hey Missouri Mappers! The Education Committee would like your input on future classes, topics and workshops you would be interested in attending. This is your chance to help us map out our Missouri Mapper's Education Plan. We would like your input on the length of the classes and workshops. Should these items be single or multiple day events? Your input is important to the success of our Missouri Mapper's Education Plan. Please email your comments, ideas and suggestions to pwilliams@cuivre.com. Don't forget to watch the Missouri Mapper's Newsletter for mapping tips, tricks, games and quizzes.

Respectfully submitted

Patty Williams

Education Chair

Historical Committee Report

The historical committee has been gathering information to be included for this year's report. If you have anything you would like included, please send it to myself or Frank Adam. Thank you!

Respectfully submitted,

Tim Kean

Historical Committee Chairperson

200 N. Main St, Suite 126

Rolla, MO 65401

tim.kean@phelpscounty.org

PMM CERTIFICATION REPORT

10 of the 19 active PMMs met during the 2007 MMA Conference to discuss current PMM issues. Two topics were discussed in great length. The first was how to offer the PMM certification test in a digital format. As more counties move to GIS, fewer will be inking manually. In lieu of the inking portion of the test, we will need to revise the test to allow those applicants that perform computer mapping a way to become certified using their computer mapping skills. Several committee members have already offered their expertise in this matter. This is a top priority for the PMM committee. The second topic pertained to keeping the PMM designation after retiring. The PMM certification is specific regarding the number of points earned each year to retain an active PMM status. Most PMM at the meeting felt that there are several ways to retain enough points each year, even if you were not employed in the mapping field. We will consider more discussion from PMMs on each of these matters.

Thank you to all those PMMs that signed up on the committee for the 2007-2008 year. I greatly appreciate all their time, talent and input. It is wonderful to work with such experienced mappers from across the state. And, to those of you who have not considered becoming a PMM, now might be the time to take your skills to the next level. If you have any question about becoming a PMM, contact me or anyone on the PMM Certification Committee for information.

Respectfully submitted,

Barbara Kaszuba, PMM

PMM Certification Chairman

barbara_64850@yahoo.com

CONFERENCE COMMITTEE CHAIR

"We have received some good feedback and suggestions from both attendees and vendors on the 2007 conference, and would welcome more. We have also started talking about ideas for a conference theme for next year. Please submit your comments and ideas to me via email at kfouts@sidwellco.com, or by phone at 630.549.1065. Finally, a sincere "thanks" to Katie Shepherd of Midland GIS for all her work over the past few years - I've got some big shoes to fill!"

Hope this is OK - let me know if any questions. Thanks!

~Karen

Publication Committee Report

This issue will be mailed out to approximately 300 individuals. It will also be posted on our website, along with newsletters from the past.

Advertising Revenue for the October issue is \$504, but I still have a few that may place an ad at the last moment.

If you would like to submit stories, pictures, information or anything else related to mapping or GIS please send them to Shane McDermott at shane@mid-westgis.com or mail them to:

Shane McDermott, GISP

President

Mid-West GIS, Inc.

510 Maine St, Suite 510

Quincy, IL 62301

Aerial Services, Inc.

Professional Geospatial Provider Since 1967

- *Aerial Photography (Digital & Conventional)*
- *Photogrammetry*
- *Orthophotography*
- *LiDAR Surveys*
- *Topographic & Planimetric Mapping*
- *GIS Solutions*

Cedar Falls, Iowa

877-ASI-4GIS

www.aerialservicesinc.com

asi



Mike Ohnemus, Kim Swisher, Shane McDermott,
Alex Wieser, Joe Darnell

Mid-West GIS, Inc. has opened a new office in Quincy, Illinois. Offering a full range of GIS services. Our goal is to provide Quality GIS Services at an affordable price to clients in the Mid-West

For more information on our Products & Services, please contact us at the number below.

Utility

water, sewer, electrical, gas, and other related utilities

Transportation

road centerlines, bridge & culvert inventory, road surface inventory, sign inventory

Planning and Zoning

Zoning, Building Permit, Comprehensive Plan, and other related applications

911 and Addressing

911 addressing and dispatch applications

Land Base

Parcel. Soil, and Land Use

Emergency Response Networks

Police Incident Locations, Building Plans for Public Buildings, Flood & Emergency Management Plans

Customer Location

Commercial customer tracking and analyzing applications

Routing

Vehicle routing applications

ArcIMS

Website based GIS development

Mid-West GIS, Inc.
510 Maine St.
Suite 510
Quincy, IL 62301

Web - www.mid-westgis.com
Phone - (217) 222-7793
Fax - (217) 222-7794
Email - shane@mid-westgis.com

ANNUAL MEETING COMMITTEE

The Annual Meeting Committee held a conference call on October 31. Items discussed at this meeting included a recap of the 2007 conference, theme ideas for 2008, and topic ideas for workshops and educational sessions for 2008. We are tentatively planning to set educational tracks and try the idea of issuing a call for presentations, which should help achieve a good balance in the educational program. The Meeting Committee has also created their own mailing list to facilitate contact in between meetings. Our next meeting will take place in January; meeting date will be selected after the first of the year.

Happy Holidays to all!

Karen Fouts, CMS

Annual Meeting Chair

GIS—Better Decisions through Modeling and Mapping Our World

Geographic information system (GIS) technology is an important and proven decision-making tool for governments to respond to challenges efficiently, enhance business functions, improve service delivery, and plan successfully for the future. By using ESRI's scalable family of ArcGIS® software, governments can unite information from many departments to create a common, map-based data display, analysis, and dissemination platform, enabling staff to visualize data in new ways. This geographic data can be used across all departments, in the field, and on the Internet, resulting in more comprehensive policies and a better informed and engaged community.



ESRI Philosophy

ESRI believes that better information makes for better decisions. Our reputation is built on contributing our technical knowledge, our special people, and our valuable experience to the collection, analysis, and communication of geographic information. Contact us today to learn how ESRI's GIS is helping to manage and improve government operations around the world.

1-800-447-9778

info@esri.com • www.esri.com

Copyright © 2005 ESRI. All rights reserved. The ESRI globe logo, ESRI, ArcGIS, www.esri.com, and @esri.com are trademarks, registered trademarks, or service marks of ESRI in the United States, the European Community, or certain other jurisdictions. Other companies and products mentioned herein are trademarks or registered trademarks of their respective trademark owners.

F S S Q U A R E M I L E F N C
R P C E O B H E C T A R E G X
M L Q G J V Y R L Z W K I S M
D S D N U E W D C B E X L F A
A I E A V N R H N M E T E R L
T N F R O D B Y D Z F Y V J K
S Q U P N F K C U P O Q R H M
O S R A U W M Y T A O E L P Q
I N L C H A I N X Y T S J R U
C W O X H Z L V T E M N O U A
J K N T D I E H M X F I Q U E
G J G C Z N T O W N S H I P A
O I L E M R L I N K F S Y S C
V D B O E I H R G P A W K T R
P U Q F K F G B H E G P O L E

ACRE

CHAIN

FOOT

FURLONG

HECTARE

KILOMETER

LINK

METER

MILE

POLE

RANGE

ROD

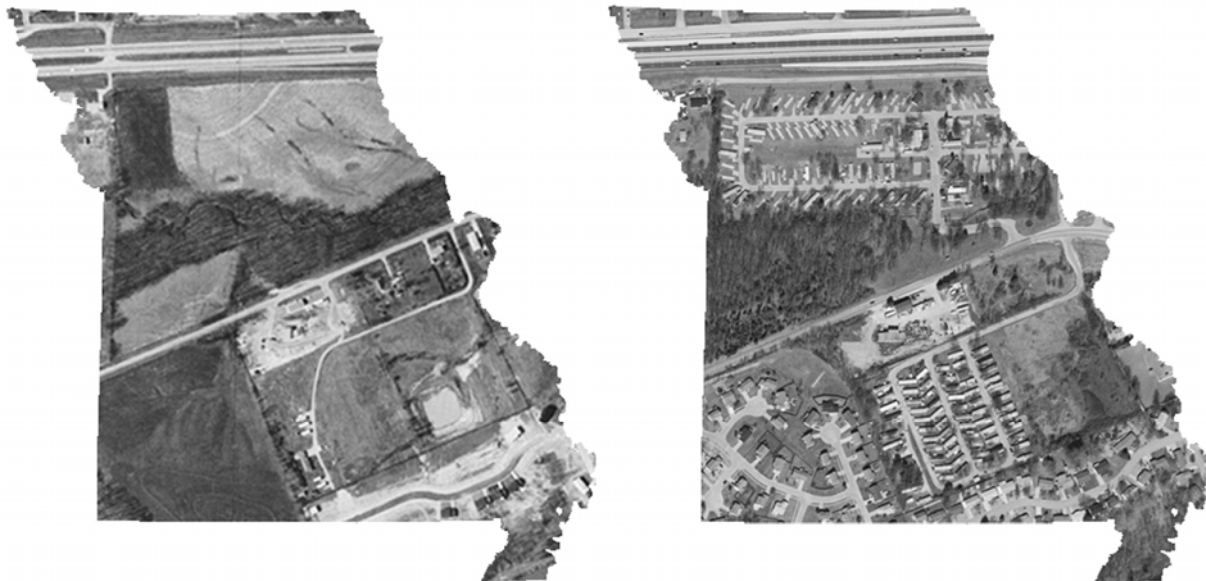
SQUAREMILE

SURVEY

TOWNSHIP

Do You Remember What Missouri Looked Like 50 Years Ago?

We do, and we have the pictures to prove it. For over 50 years, Surdex has been mapping Missouri. We've photographed every inch of this great state many times. So if you are looking for a complete county-wide project, or a small site for development, Surdex has it covered!



Digital Plan / Topo Mapping
Digital Orthophotography
GPS Control Surveys
Aerial Photography
GIS Services
LIDAR

Contact us at: 636-532-3427
520 Spirit of St. Louis Blvd., Chesterfield, MO 63005 www.surdex.com



How do you like your geospatial?

MJ Harden offers a full range of advanced mapping and data management options to support your GIS environment and geospatial applications.

- ▶ **Multispectral Digital Aerial Imaging**
- ▶ **Advanced LiDAR Data Capture and Processing**
- ▶ **Planimetric and Topographic Mapping**
- ▶ **Digital Orthophoto Imagery**
- ▶ **GeoEye™ Satellite Imagery**
- ▶ **Remote Sensing**
- ▶ **GIS Consulting, Implementation and Support**

Put our technology to work for you. Look to MJ Harden as your full-service resource for all things geospatial.

To get the full story, contact your MJ Harden representative, or visit: www.mjharden.com.

MJ Harden™
A GeoEye Company

5700 Broadmoor Street, Suite 800
Mission, Kansas 66202-2402
Phone 913.981.9600 Fax 913.981.9602

PHOTOGRAMMETRY SERVICES

Randy Mayden 913.981.9515 Don Cleveland 913.981.9530

GIS IMPLEMENTATION SERVICES

Jayson Troughton 636.357.3140 Mike Kallas 913.981.9525



Since 1945

**Your One Stop Source for all your
GPS, Mapping, and Surveying Needs.**

ST. LOUIS

36 Kirkham Industrial
St. Louis, MO 63119
(800) 489-2282
(314) 968-2282

KANSAS CITY

918 N. Scott Avenue
Belton, MO 64012
(800) 489-3383
(816) 331-3383



Sales • Service • Repairs • Rentals • Training • Financing

MEMBERSHIP REPORT

There are currently 53 counties with 200 paid members. Membership renewals are trickling in slowly. Please check your newsletter label and if it doesn't say exp. 2008 then your membership is due.

Thank you.

Respectfully submitted,
Gladys Smith
St. Clair County Assessor
MMA Membership Chairperson

Are you a GIS Certified Professional?

Situation Wanted

Cadastral Mapper seeking public or private position. Eight years experience, seven years solo with 135,000 parcels in major urban county. Hardworking, flexible, honest, reliable and team-oriented with diverse background. Mostly AutoCAD experience.

Contact Steve at
bluebird5724@sbcglobal.net or
314-646-1883 (home) or
314-304-6711 (cell)



Visit:

<http://www.gisci.org/>
for more information

Midland GIS Solutions

Your Professional GIS Services Provider.



- GIS Development
- GIS Project Consulting
- Web GIS Service and Support
- Parcel Data Conversion
- Technical Support
- Needs Assessments
- Geodatabase Design
- GPS Services



"GIS Specialists working with local surveyors to implement County and Municipal GIS programs."

Contact us for details on project partnering.



- County Government
- Municipal Government
- Utility Companies
- Private Business
- Regional Associations
- Institutions
- Transportation
- Homeland Security



Owned and Operated by Professional Land Surveyors

501 N Market
Maryville, MO 64468
(660) 562-0050
www.midlandgis.com

152 Greystone Lane
Sunrise Beach, MO 65079
(573) 374-0885
info@midlandgis.com

Toll Free: 877-375-8633



Business Partner



AUTHORIZED
BUSINESS PARTNER



AWARDS COMMITTEE REPORT

The awards committee is currently seeking nominations for Mapper of the Year. An application is included in the newsletter. Please help the awards committee honor members who have done an outstanding job this year by submitting your nominations. Please recommend any additional awards that you would like the awards committee to present by submitting your ideas to lisac@casscounty.com, or by calling 816-380-8190. Any suggestions to make this a more rewarding year would be appreciated.

Respectfully submitted,

Lisa Chapman

Awards Committee Chairperson



GIS Technician

Midland GIS Solutions

Job Description

Midland GIS Solutions is seeking a qualified, full-time GIS Technician to work in an exciting team environment with the primary role of developing and implementing County and Municipal GIS projects. Duties will include conventional cadastral mapping, GIS data conversion, assisting with quality control procedures, and incorporating field data and survey research into GIS projects.

Education

Qualified candidates should possess a four-year accredited degree in GIS or related Geospatial Science.

Desired Skills

The qualified applicant will be self motivated with excellent organizational and analytical skills, strong verbal and written skills with close attention to detail, and the ability to prioritize and meet deadlines. Qualified candidates must be proficient in ESRI ArcGIS technologies and experience with ArcView and ArcEditor is preferred.

Benefits

Midland GIS Solutions offers a competitive benefits package that includes paid vacation, health insurance, 401K and profit sharing. Starting salary will be based on experience.

Headquartered in Maryville, Missouri, Midland GIS Solutions is a leading provider of Geographic Information System technology in the Midwest. With over 34 years of mapping and GIS experience, Midland has completed more GIS projects in the state of Missouri than all other GIS firms combined.

How to apply

If you are interested in this job opportunity please email your resume to info@midlandgis.com. Please reference "GIS Technician Position" in the subject line.

GIS Solutions that Balance Experience and Imagination



Industry leading know-how and technology

A leader in providing GIS solutions to municipal, county, and state government. With the successful implementation of over 150 projects, and the development and hosting of over 70 ArcIMS based websites, The Schneider Corporation represents the cutting-edge of GIS and data warehousing technology. Contact us to put our experience to work for you.

land records management
public safety
public works
product development
website development/hosting



www.schneidercorp.com
866.973.7100

Beware of the "quick fix" GIS solution.

Too many GIS providers are focused on a "quick fix" GIS solution - one that leaves you with a minimal project for maximum cost. What makes Sidwell different? Our team of GIS professionals always takes the time to:

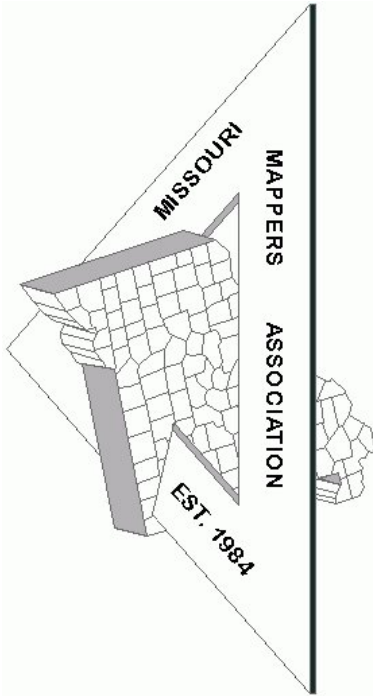
- *Listen first*
- *Identify your crucial needs*
- *Recommend logical & cost-effective solutions*
- *Support your project efforts*

Experience the Sidwell difference. Contact us today.



Brian Baker • 365 Balmoral Castle Drive • Wentzville, Missouri 63385 • 636.541.2831 • bbaker@sidwellco.com
675 Sidwell Court • St. Charles, Illinois 60174 • 877.SIDWELL • www.sidwellco.com

Missouri Mappers Association
P.O. Box 1692
JEFFERSON CITY, MO 65102



We have plenty of ad space available for the upcoming issues. Please contact Shane McDermott at shane@mid-westgis.com for more information. Rates are as follows:

Business Card	3 Issues - \$25
1/4 Page	3 Issues - \$100
1/2 Page	\$50 per Issue
Full Page	\$100 Per Issue

Be a **Newsletter Sponsor** with a 1/4 page advertisement on the front page of one issue: \$250 Per Issue

ARTICLE AND NEWS SUBMISSIONS

Article and news submissions for topics that cover issues that are important to all of us can be sent via email or snail-mail to the following address for consideration for future publications.

Shane C. McDermott, GISP
Mid-West GIS, Inc.
510 Maine St. Suite 510
Quincy, IL 62301
shane@mid-westgis.com
www.mid-westgis.com

Missouri Mappers Association
P.O. Box 1692
Jefferson City, Missouri 65102

