

# MISSOURI MAPPERS ASSOCIATION

VOLUME 22, ISSUE 4

OCTOBER 2006

## LETTER FROM THE PRESIDENT, SHANE MCDERMOTT

Wow, it is that time already. It seems like we just left the Lake from the Annual Meeting, yet here we are in October.

The Annual Meeting was a huge success. It was held from August 7-10th at the Resort At Port Arrowhead in lake of the Ozarks. Representative Mike Sutherland was our Keynote Speaker and did an outstanding job. Thanks again Mike, we appreciate your time.

We had 15 exhibitors at the meeting this year, and I want to take the time to thank all of the exhibitors for their support of our organization. And as always, to encourage our members to stop in and visit with the vendors at the annual meeting. There are some outstanding mapping and GIS related services offered.

The October Board Meeting was cancelled due to lack of attendance. The Missouri Assessors Conference was held this week, so not many of the Board members were available for attendance. Most of the issues that were to be dealt with were tabled for the January 2007 Board Meeting. The other issue, which deals with our website host, will be dealt with through email by the Board Members next week.

The committee's have been relatively inactive since the annual meeting, which is probably somewhat normal. I will be posting the committee lists in the newsletter, so if you signed up for anything, please make sure you get in touch with the committee chair person so you

can be involved with the committee.

The 2007 Annual Meeting will be held at the same location. The dates will be July 31st - August 3rd. We went back to the Tuesday through Friday option this year, which was decided on by a vote from the Board before the Annual Meeting.

Katie Shepherd is the Annual Meeting Chair Person again. If you have any questions, comments, or suggestions, please feel free to shoot an email her way. We encourage any input you have on the Annual Meeting.

That's all for now. Enjoy your Fall.

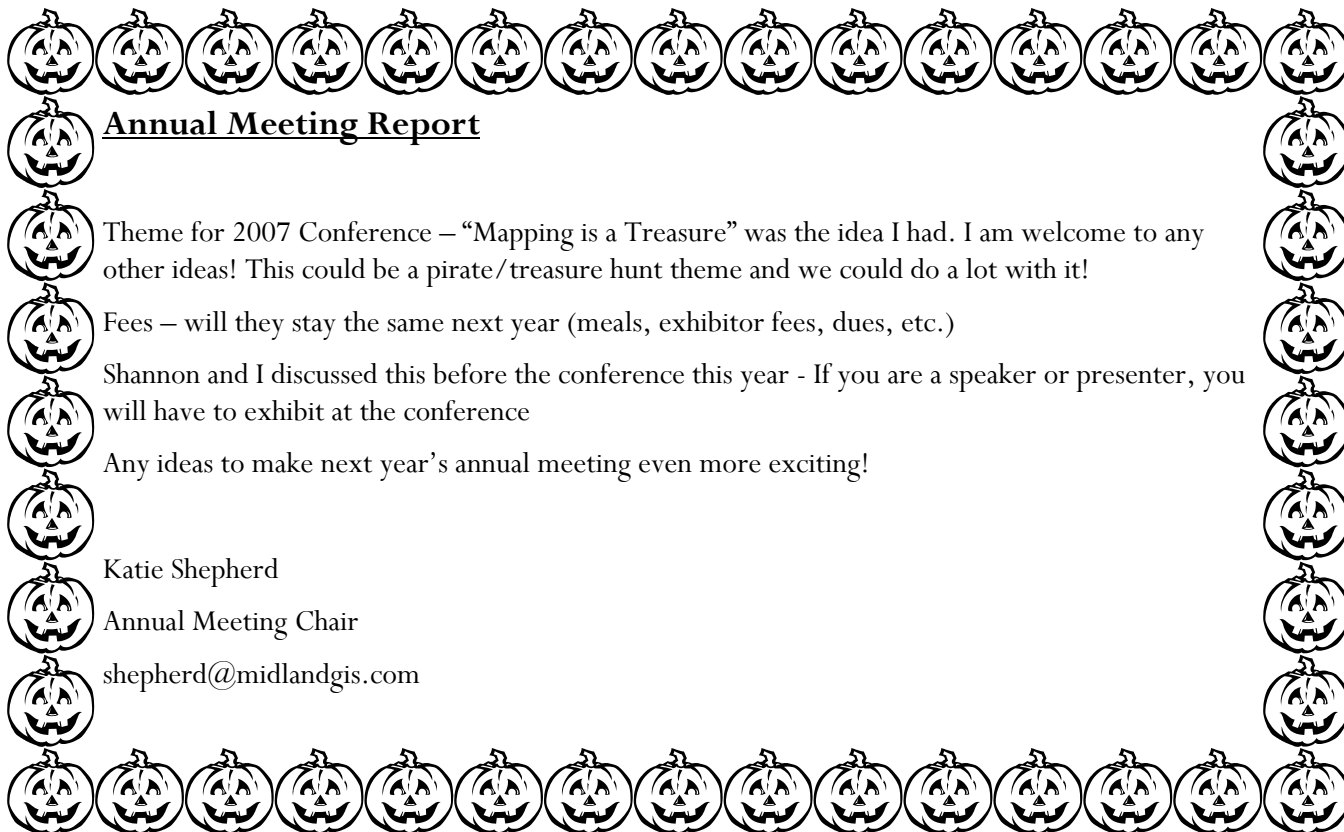
Shane McDermott

President

shanem@psba.com

### INSIDE THIS ISSUE:

ANNUAL MEETING	2
PUBLICATION COM	5
COMMITTEES	6
TREASURER	9
MEMBERSHIP	11
AWARDS	13



## Annual Meeting Report

Theme for 2007 Conference – “Mapping is a Treasure” was the idea I had. I am welcome to any other ideas! This could be a pirate/treasure hunt theme and we could do a lot with it!

Fees – will they stay the same next year (meals, exhibitor fees, dues, etc.)

Shannon and I discussed this before the conference this year - If you are a speaker or presenter, you will have to exhibit at the conference

Any ideas to make next year's annual meeting even more exciting!

Katie Shepherd

Annual Meeting Chair

shepherd@midlandgis.com

## **Aerial Services, Inc.**

Mapping Your World® since 1967



### Geospatial Services Including:

- GIS Solutions
- Aerial Photography
- LIDAR
- County-wide Digital Orthos
- GPS Surveys-Ground & Airborne
- DEM/DTM Topographic Mapping
- Analytical Aerotriangulation
- Precision Scanning
- Data Conversion

Cedar Falls, Iowa

Toll Free: 877-ASI-4GIS

[www.AerialServicesInc.com](http://www.AerialServicesInc.com)

## Cost effective GIS solutions!

Why pay ridiculously inflated prices when you can get the same high quality services at a fraction of the cost from a locally owned company? Visit [www.psba.com](http://www.psba.com) for more information.

### **Poepping, Stone, Bach & Associates, Inc.** **Architecture, Engineering, GIS Services, Planning & Surveying**

#### **Parcel Mapping**

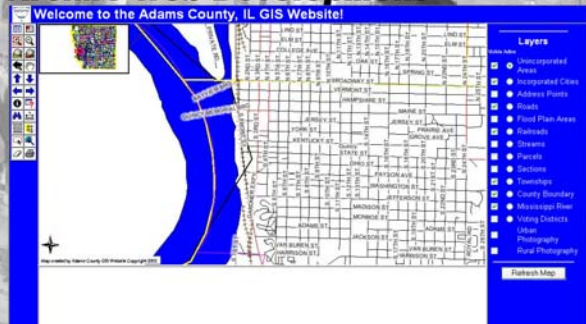


#### **Utility Mapping**



**[www.psba.com](http://www.psba.com)**

#### **ArcIMS Web Development**



#### **Land Use Development**



**Quincy Office**  
 100 S 54th St.  
 Quincy, IL 62306  
 Phone 217/223-4605  
 Toll Free 877/423-4605  
 Fax 217/223-1546

**Hannibal Office**  
 U.S. Federal Building  
 801 Broadway, Suite 224  
 Hannibal, MO 63401  
 Phone 573-406-0541  
 Fax 573-406-0390

**Keokuk Office**  
 3523 Main St.  
 Keokuk, IA 52632  
 Phone 319/524-8730  
 Toll Free 800/249-5869  
 Fax 319/524-7720

**email - [shanem@psba.com](mailto:shanem@psba.com)**  
**web- [www.psba.com](http://www.psba.com)**



# When it comes to your GIS, don't settle for second best:

get the  
**mapping expertise** you need and  
the **GIS technology** you want,  
all rolled into one - ***with Sidwell!***

It seems like a lot of consultants these days are willing to make a lot of claims. "We're the most cost effective solution!" "We can build a GIS just like Sidwell's!" When it comes to your GIS, you need a company that has the experience and integrity to deliver as promised. **Sidwell is that company!** Only Sidwell can give you the key elements needed for a successful GIS: a depth of mapping experience combined with a dedication to technology that is second to none. Our history of mapping and land records expertise is unparalleled, and we continue to set standards in the GIS industry for client service and technology innovations like our Parcel Builder™ software.

For more information on how you can benefit from our unique blend of cadastral mapping expertise and GIS technology, contact us today!

MISSOURI OFFICE  
365 Balmoral Castle Drive  
Wentzville, MO 63385  
636-327-5937  
bbaker@sidwellco.com



MAIN OFFICE  
675 Sidwell Court  
St. Charles, IL 60174  
630.549.1000  
www.sidwellco.com

### **Publication Committee Report**

This issue will be mailed out to approximately 230 members and vendors. It will also be posted on our website, along with newsletters from the past.

Advertising Revenue for the July issue is \$685. Total Advertising Revenue to date for 2006 is \$2,595.

If you would like to submit stories, pictures, information or anything else related to mapping or GIS please send them to Shane McDermott at [shanem@psba.com](mailto:shanem@psba.com) or mail them to:

Shane McDermott, GISP

Poepping, Stone, Bach & Associates, Inc.

100 S. 54th St.

Quincy, IL 62305

PS: Anybody that took any pictures at the Annual Meeting and would like to share them with the rest of the members, please send me a CD with the pictures and I will get them on the website.

## **KUCERA INTERNATIONAL INC.**

**Providing high quality, cost-effective aerial mapping services to Missouri counties and cities.**

Aerial Photography

Ground and Airborne GPS/IMU

LIDAR

Digital Terrain/Elevation Models

Digital Orthophotography

Digital Planimetry/Topography

Cadastral Mapping

Data Conversion

ORTHOSCAPE® 3D GIS



**Kucera International Inc. is a leading provider of aerial mapping and related geomatic services with over 50 years of experience and production offices located throughout the United States.**

**Kucera customers are served by a skilled staff of experienced professionals, including licensed/certified photogrammetrists, mappers, surveyors, geodesists, engineers, planners, and computer/GIS technicians. Our team works closely and cooperatively with each client to achieve optimal results and ensure time and cost efficiency.**



### **Kucera Midwest**

113 Birchwood Drive, Ballwin, MO 63011

Tel (636) 527-6206, Fax (636) 527-6209

[k.swisher@kucerainternational.com](mailto:k.swisher@kucerainternational.com), [www.kucerainternational.com](http://www.kucerainternational.com)

## MISSOURI MAPPERS ASSOCIATION

2006 - 2007 Committee List

The Chairperson for each committee will be responsible for coordinating and supervising other members of their committee to make sure tasks are completed and submit a quarterly report to the Board of Directors and for the Newsletter

	<i>Name</i>	<i>Email</i>
<b>Annual Meeting:</b>		
<b>Chair Person</b>	<b>Katie Shepherd</b>	<a href="mailto:shepherd@midlandgis.com">shepherd@midlandgis.com</a>
Golf Tournament:	Jim Kyle	<a href="mailto:doewiggler@aol.com">doewiggler@aol.com</a>
Assist where needed	Josie Adams	<a href="mailto:josie@greatriverng.com">josie@greatriverng.com</a>
Assist where needed	Sarah Murray	
Assist where needed	Alice Lee	<a href="mailto:alicelee63066@yahoo.com">alicelee63066@yahoo.com</a>
Assist where needed	Susan Oser	<a href="mailto:soser_752@hotmail.com">soser_752@hotmail.com</a>
Assist where needed	Michael Ohnemus	<a href="mailto:mikeo@psba.com">mikeo@psba.com</a>
<b>Awards Committee:</b>		
<b>Chair Person:</b>	<b>Belinka Novotny-Held</b>	<a href="mailto:bheld@jcao.org">bheld@jcao.org</a>
	Alice Lee	<a href="mailto:alicelee63066@yahoo.com">alicelee63066@yahoo.com</a>
	Stephanie Hyder-Stevens	<a href="mailto:trejothecat@hotmail.com">trejothecat@hotmail.com</a>
	Linda Crane	
<b>Publication:</b>		
<b>Chair Person:</b>	<b>Shane McDermott</b>	<a href="mailto:shanem@psba.com">shanem@psba.com</a>
	Joe Darnell	<a href="mailto:joed@psba.com">joed@psba.com</a>
<b>Information Technology:</b>		
<b>Chair Person:</b>	<b>Kevin Dicks</b>	<a href="mailto:kevind@psba.com">kevind@psba.com</a>
<b>Membership:</b>		
<b>Chair Person:</b>	<b>Gladys Smith</b>	<a href="mailto:glad@tri-lakes.net">glad@tri-lakes.net</a>
	Marti Suiter	<a href="mailto:hicoassessor@positech.net">hicoassessor@positech.net</a>
<b>Certification:</b>		
<b>Chair Person:</b>	<b>Tim Houtchens</b>	<a href="mailto:timh@co.taney.mo.us">timh@co.taney.mo.us</a>
	Barbara Kaszuba	
	Linda Reynolds	<a href="mailto:lindak@co.taney.mo.us">lindak@co.taney.mo.us</a>
	Linda Crane	<a href="mailto:lcrane@boonecountymmo.org">lcrane@boonecountymmo.org</a>
	Stan Balsma	<a href="mailto:sbalsman@semorpc.org">sbalsman@semorpc.org</a>
	Belinka Novotny-Held	<a href="mailto:bheld@jcao.org">bheld@jcao.org</a>
	Stephanie Hyder-Stevens	<a href="mailto:trejothecat@hotmail.com">trejothecat@hotmail.com</a>
<b>Historical:</b>		
<b>Chair Person:</b>	<b>Frank Adam</b>	
	Tom Kean	
<b>Education:</b>		
<b>Chair Person:</b>		
<b>Legislation:</b>		
<b>Chair Person:</b>	<b>Darrel King</b>	<a href="mailto:montcnty@socket.net">montcnty@socket.net</a>
	Randy Lewis	<a href="mailto:a1mapmkr@hotmail.com">a1mapmkr@hotmail.com</a>
	Dan Roe	
	Mark Campbell	<a href="mailto:lagadmin@cityoflagrangemo.gov">lagadmin@cityoflagrangemo.gov</a>
	George Frink	<a href="mailto:hocoass@yahoo.com">hocoass@yahoo.com</a>
	Susan Oser	<a href="mailto:soser_752@hotmail.com">soser_752@hotmail.com</a>
<b>GIS Technical Advisory:</b>		
<b>Chair Person:</b>		



## GIS For a Better World



ESRI has been the world leader in geographic information system (GIS) software for over 30 years. ESRI offers innovative solutions that will help you create, visualize, analyze, and present information better and more clearly. Organizations around the world, as well as local, state, and federal government agencies, use ESRI GIS software to make smart and timely decisions. ESRI offers GIS solutions to help you unlock the spatial component of your valuable data.



Find out how GIS can help your organization.  
[www.esri.com](http://www.esri.com) • 1-800-447-9778 • [info@esri.com](mailto:info@esri.com)

Copyright © 2002 ESRI. All rights reserved. ESRI and the ESRI globe logo are trademarks of ESRI, registered in the United States and certain other countries; registration is pending in the European Community. [www.esri.com](http://www.esri.com) and [info@esri.com](mailto:info@esri.com) are service marks of ESRI.


*Wind*  
 Environmental Services, LLC

**Complete GIS Solutions<sup>sm</sup>**

**\* Software \*      \* Hardware \*      \* Training & Support \***

**LIZARDTECH<sup>™</sup>**  
 a celartem Company



**Arc**  
 ESRI **GIS<sup>™</sup>**



**RICOH**

**LASERCRAFT**

**GeoSpatial**  
 EXPERTS

**THALES**

P.O. Box 638

Bonne Terre, MO 63628

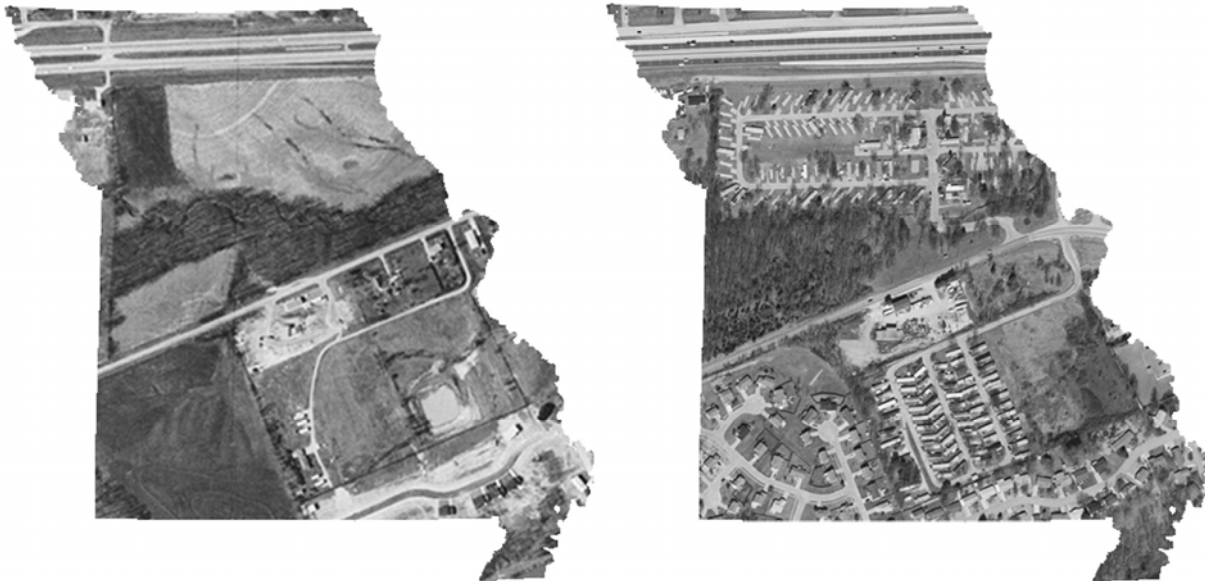
Phone: 573-358-2522 Fax: 573-358-5770

Web: [www.windenvironmental.com](http://www.windenvironmental.com) Email: [info@windenvironmental.com](mailto:info@windenvironmental.com)



## **Do You Remember What Missouri Looked Like 50 Years Ago?**

We do, and we have the pictures to prove it. For over 50 years, Surdex has been mapping Missouri. We've photographed every inch of this great state many times. So if you are looking for a complete county-wide project, or a small site for development, Surdex has it covered!



**Digital Plan / Topo Mapping  
Digital Orthophotography  
GPS Control Surveys  
Aerial Photography  
GIS Services  
LIDAR**

Contact us at: 636-532-3427  
520 Spirit of St. Louis Blvd., Chesterfield, MO 63005 [www.surdex.com](http://www.surdex.com)



**Treasurers Report  
October 2006**

<b>Beginning Balance August 5, 2006</b>	<b>\$30,178.54</b>
---	--------------------

**Receipts**

<b>Dues</b>	<b>\$385.00</b>
<b>Conference Fees</b>	<b>\$478.10</b>
<b>Education</b>	<b>\$20.00</b>
<b>Exhibitors</b>	<b>\$712.00</b>
<b>Golf Tournament</b>	<b>\$106.00</b>
<b>Misc.</b>	<b>\$10.01</b>
<b>Interest Earned</b>	<b>\$1.22</b>
<b>Total Receipts</b>	<b>\$1,712.33</b>

<b>Beginning Balance + Receipts</b>	<b>\$31,890.87</b>
-------------------------------------	--------------------

**Disbursements**

<b>General Expenses</b>	<b>\$108.19</b>
<b>Annual Meeting</b>	<b>\$14,614.17</b>
<b>Awards</b>	<b>\$119.89</b>
<b>Education (Refund)</b>	<b>\$20.00</b>
<b>Golf Tournament</b>	<b>\$1,662.50</b>
<b>Total Disbursements</b>	<b>\$16,524.75</b>

<b>Balance October 5, 2006</b>	<b>\$15,366.12</b>
--------------------------------	--------------------



Your **COMPLETE** Source for Mapping/GIS



### GeoXT Handheld

THE TOTAL GPS PLATFORM FOR ALL YOUR GIS FIELD REQUIREMENTS

The GeoXT™ handheld, from Trimble's GeoExplorer® series, is the essential tool for maintaining your GIS. A high performance, submeter GPS receiver combined with a rugged handheld computer, the GeoXT handheld is ideal for use by utility companies, local government organizations, federal agencies, or anyone managing assets or mapping critical infrastructure who needs accurate data to do the job right—the first time.

### Pathfinder Pro Series

HIGH PERFORMANCE INTEGRATED GPS RECEIVER FOR SUBFOOT ACCURACY

The GPS Pathfinder® ProXH™ receiver introduces a new era in GPS for GIS data collection. A GPS receiver, antenna, and all-day battery in one, the ProXH receiver delivers subfoot (30 cm) accuracy with Trimble's revolutionary H-Star™ technology.

Don't be fooled by its rugged good looks—the ProXH receiver is quite simply the most sophisticated high performance GPS receiver on the market.



#### ST. LOUIS

36 Kirkham Industrial  
St. Louis, MO 63119  
(800) 489-2282 • (314) 968-2282  
Fax: (314) 968-9217

#### KANSAS CITY

918 N. Scott Avenue  
Belton, MO 64012  
(800) 489-3383 • (816) 331-3383  
Fax: (816) 331-7199

[www.seilerinst.com](http://www.seilerinst.com)

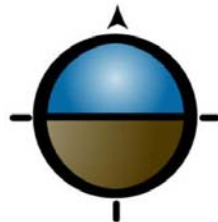
## Membership Report

I sent renewal letters out in August and have received several renewals and some new counties have joined this year. As of now there are 60 counties with memberships and a total of 211 members. Anyone not renewing in the next couple of months will be dropped from the mailing list so please renew your membership soon.

Respectfully submitted,

Gladys Smith

Membership Chairperson



**GRE**  
GREAT RIVER  
ENGINEERING



- Full GIS Implementation
- Data Creation, Conversion, & Manipulation
- E911 Address Creation & Standardization
- Utility Mapping
- Land Use & Parcel Mapping
- Aerial Photo Flight Coordination
- Custom Applications, Maps, & Reports
- Professional Land Surveying
- Civil Engineering

2826 S. Ingram Mill Rd  
Springfield, MO 65804  
[www.greatrivereng.com](http://www.greatrivereng.com)  
Phone: 417-886-7171 Fax: 417-886-7591





# Midland GIS Solutions

*Your Professional GIS Services Provider.*



- GIS Development
- GIS Project Consulting
- Web GIS Service and Support
- Parcel Data Conversion
- Technical Support
- Needs Assessments
- Geodatabase Design
- GPS Services



***“GIS Specialists working with local surveyors to implement County and Municipal GIS programs.”***

***Contact us for details on project partnering.***



- County Government
- Municipal Government
- Utility Companies
- Private Business
- Regional Associations
- Institutions
- Transportation
- Homeland Security



***Owned and Operated by Professional Land Surveyors***

501 N Market  
Maryville, MO 64468  
(660) 562-0050  
www.midlandgis.com

152 Greystone Lane  
Sunrise Beach, MO 65079  
(573) 374-0885  
info@midlandgis.com

**Toll Free: 877-375-8633**





## AWARDS COMMITTEE REPORT

Congratulations to the award recipients at the 22<sup>st</sup> Annual Missouri Mappers conference.

**Mapper of the Year:** Susan Oser who works for Howard County.

**Fireball:** Gladys Smith, Assessor of St. Clair County

**Outstanding Boss of the Year Award:** George Frink, Assessor of Howard County.

**Annual Meeting:** Katie Shepherd, with Midland GIS Solutions.

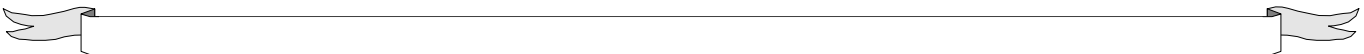
**President:** Randy Lewis, with Lewis and Bade Surveying

**Past President:** Kim Swisher, with Kucera, for serving as President of MMA for the 2004-2005 year.

Chapter officers and committee chairs and board members are to be presented with certificates of appreciation.

Congratulations to all who worked so hard to make this a successful year and for a job well done.

Belinka Novotny-Held, PMM



## GIS Solutions that Balance Experience and Imagination



### Industry leading know-how and technology

*A leader in providing GIS solutions to municipal, county, and state government. With the successful implementation of over 150 projects, and the development and hosting of over 70 ArcIMS based websites, The Schneider Corporation represents the cutting-edge of GIS and data warehousing technology. Contact us to put our experience to work for you.*

land records management  
public safety  
public works  
product development  
website development/hosting



[www.schneidercorp.com](http://www.schneidercorp.com)  
866.973.7100



**Joke submitted by an MMA Member**

"Hello, is this here the Sheriff's Office?"

"Yes. What can I do for you?"

"I'm calling to report my neighbor, Virgil Smith.

He's a drillin' holes in his farwood and hiding marijuana inside!"

"Thank you very much for the call, sir."

The next day, the Sheriff & his deputies descend on Virgil's house.

They search the shed where the firewood is kept. Using axes, they split

every piece of wood, but

find no marijuana. They sneer at Virgil and leave.

\*\*\*\*\* The phone rings at Virgil's house. \*\*\*\*\*

"Hey, Virgil! This here is Floyd. Did the Sheriff come?"

"Yeah!"

"Did they split yer farwood?"

"Yep!"

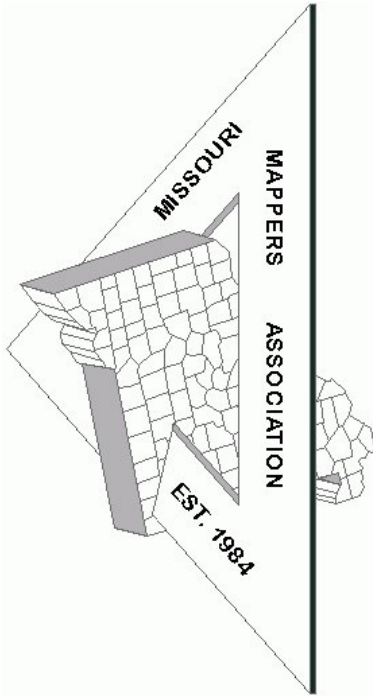
"Happy Birthday, buddy!"

**off the mark**

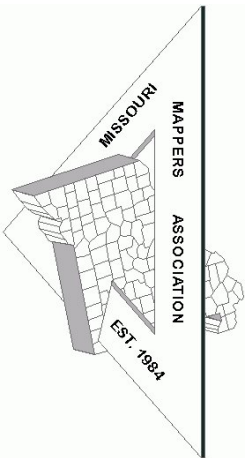
by Mark Parisi

[www.offthemark.com](http://www.offthemark.com)

**Missouri Mappers Association**  
**P.O. Box 1692**  
**JEFFERSON CITY, MO 65102**



Missouri Mappers Association  
P.O. Box 1692  
Jefferson City, Missouri 65102



We have plenty of ad space available for the upcoming issues. Please contact Shane McDermott at [shanem@psba.com](mailto:shanem@psba.com) for more information. Rates are as follows:

<b>Business Card</b>	3 Issues - \$25
<b>1/4 Page</b>	3 Issues - \$100
<b>1/2 Page</b>	\$50 per Issue
<b>Full Page</b>	\$100 Per Issue

Be a **Newsletter Sponsor** with a 1/4 page advertisement on the front page of one issue: \$250 Per Issue

#### ARTICLE AND NEWS SUBMISSIONS

Article and news submissions for topics that cover issues that are important to all of us can be sent via email or snail-mail to the following address for consideration for future publications.

Shane C. McDermott, GISP  
Poepping, Stone, Bach & Associates, Inc.  
100 S. 54th Street  
Quincy, IL 62301  
217-223-4605  
[shanem@psba.com](mailto:shanem@psba.com)