

# MISSOURI MAPPERS ASSOCIATION

VOLUME 21, ISSUE 4

OCTOBER 2005

## LETTER FROM THE PRESIDENT, RANDY LEWIS

I hope everyone had a good time at our 21<sup>st</sup> annual meeting. I thought it was very educational for all who attended.

We have all the committees organized, and the chair people are already starting on next year's conference. And yes we are always looking for new ideas, and suggestions that could make it better. So if you are not on a committee you can still give the board suggestions if you have any.

Our next board meeting will be at the Phelps County Court House on October 7<sup>th</sup> at 10:00 A.M.

The next meeting after that is tentative set for March 3<sup>rd</sup> 2006. I know it is the first Friday of Trout Season, but the meeting doesn't start till 10:00. So you will have time to fish before the meeting. Meramec, and Montauk are not too long of a drive from Rolla. "Need directions to the parks, e-mail me".

As we have all heard the stories in New Orleans, I would like recognize the person who does our publishing. When Katrina hit, Shane McDermott was finishing up on a rental house that he and his wife own. When the Hurricane came thru New Orleans and the people down there were

with out homes, he opened his house up for a family to use. Even though a family never came, he had the house for someone to use. And also a lot of members of the Missouri Mapper Association were also getting ready to send clothes, and funds to the family that was going to use Shane's house. Good job Shane, and to our awesome members for being there when someone is in need.

The Season is starting to change, no I do not mean the cold weather I mean "HUNTING SEASON", so I thought I would share some dates with our fellow outdoors people. Turkey Season is from October 1<sup>st</sup> thru 31<sup>st</sup>. Deer Season Rifle November 12<sup>th</sup> thru 22<sup>nd</sup>. Deer Season Archery September 15<sup>th</sup> thru November 11<sup>th</sup>, and November 23<sup>rd</sup> thru January 15<sup>th</sup>. All season information is on the Missouri Department of Conservations website.

[www.conservation.state.mo.us](http://www.conservation.state.mo.us) And for the non hunters there are always the beautiful colors on the trees that you can see as you go to the wineries, yard sales, auctions, craft shows. That is just another secret blessing that Missouri has, are the fine colors our trees put out.

As being a Professional Land Surveyor, I thought I would share some Missouri history with you. As you know the initial point of the 5<sup>th</sup> Principal Meridian was established November 10<sup>th</sup> 1815. And that was the beginning of the survey system of Missouri. It was unique how they established that point. The Surveyor General that had the office in St. Louis sent Prospect Robbins, and Joseph Brown down the Mississippi River. When they got to the mouth of the St. Francis River Joseph Brown and his survey crew started surveying in a due West direction. Prospect Robbins continued down the Mississippi River to the Mouth of the Arkansas River and started his survey crew in a due north direction. When they met, setting stakes every half mile was on November 10, 1815. So since this was in a swamp in Arkansas, I do not have information handy to share with you on the Arkansas part, but I can tell you where Prospect Robbins was at Thanksgiving, and Christmas. On Thanksgiving he surveyed the east boundary line of section 11, township 18 north, Range 1 West. And continued a few miles north of that. As you can tell he was still in Arkansas. Christmas he surveyed the East line of Section 13, Township 41 North, Range 1 West. And

### INSIDE THIS ISSUE:

CONFERENCE PICS	4-5
TRAINING INFO	8
AWARDS	9
TREASURERS REPORT	13

continue north a few miles. That day he was in Franklin County, just north of where the Meramec River crosses the 5<sup>th</sup> Principal Meridian. Their average pace was about 5 miles a day. And with that, and the Holiday season coming up I would like to wish everyone a very Happy Holiday Season!

Once again I would like to thank all the committee people who took on the operation of being a part of their committee. And to Dan Lashley Missouri DNR Land Survey Division. For looking up the date where Prospect Robbins and Crew were on Thanksgiving and Christmas.

Sincerely  
Randy Lewis  
President

In today's tight budget environment, GIS decision makers are increasingly being asked to do more with less. Since its introduction in 1998, ImageAmerica's low-cost, high resolution digital ortho solution has been allowing customers nationwide to do just that. With industry leading prices, quick, guaranteed delivery times, high positional accuracy and outstanding customer service, ImageAmerica is quickly becoming the digital ortho solution of choice.



**ImageAmerica®**



**Accurate, High Resolution Digital Ortho**

**www.image-america.com - 800-275-0133**

### **HISTORICAL COMMITTEE REPORT**

Belinka Novotny-Held, Committee Chair

The historical committee thanks Larry Kroupa, sales representative with Kara Mid-America, who took photos at the 21<sup>st</sup> annual conference. Those photos have been printed and placed in the archived MMA photo albums. The photos will soon be available for viewing on the MMA website [missourimappers.org](http://missourimappers.org).

The following "MMA History" is a reprint of an article submitted by Don Cleveland (GE Energy) in the 1980's while he was the Historical Committee Chair. I thought the information was worth sharing again with the members.

## **M.M.A. HISTORY**

### **DID YOU KNOW...**

The Certification Committee was originally called the Professional Admissions Committee.

The Annual Meeting Committee was originally called the Program Committee.

The First Formal Board Meeting was held on December 4, 1984 at the Hilton Inn of the Ozarks, Springfield, Missouri.

The Missouri Mappers Association was incorporated as a Missouri General **NOT FOR** Profit Organization on August 3, 1984.

## **Legislative Committee**

Report of 93rd General Assembly, 1st Special Session: of interest to MMA

HB3 - Sponsor: [Pratt, Bryan](#) - CoSponsor: [Yates, Brian David, this bill](#) prohibits the posting of certain personal information on the Internet. Approved by Governor on 9/15/2005.

To repeal section 1 as enacted by the first regular session of the ninety-third General Assembly. This is in reference to bills SB 420 & HB 344 and approved by the governor on July 13, 2005. Section 1 read [1. No court or state or local agency shall post the home address, Social Security number, or telephone number of any elected or appointed official on the Internet without first obtaining the written permission of such official. And also enacted an emergency clause.

This report is a summary of the 93rd General Assembly, 1st Special Session of bill effecting the Missouri Mappers Association.

# KUCERA INTERNATIONAL INC.

**Providing high quality, cost-effective aerial mapping services to Missouri counties and cities.**

Aerial Photography

Ground and Airborne GPS/IMU

LIDAR

Digital Terrain/Elevation Models

Digital Orthophotography

Digital Planimetry/Topography

Cadastral Mapping

Data Conversion

ORTHOSCAPE® 3D GIS



Kucera International Inc. is a leading provider of aerial mapping and related geomatic services with over 50 years of experience and production offices located throughout the United States.

Kucera customers are served by a skilled staff of experienced professionals, including licensed/certified photogrammetrists, mappers, surveyors, geodesists, engineers, planners, and computer/GIS technicians. Our team works closely and cooperatively with each client to achieve optimal results and ensure time and cost efficiency.



**Kucera Midwest**

113 Birchwood Drive, Ballwin, MO 63011

Tel (636) 527-6206, Fax (636) 527-6209

k.swisher@kucerainternational.com, www.kucerainternational.com



At least one  
new face

Fun on the boat



More fun  
on the boat



# A little party on the patio

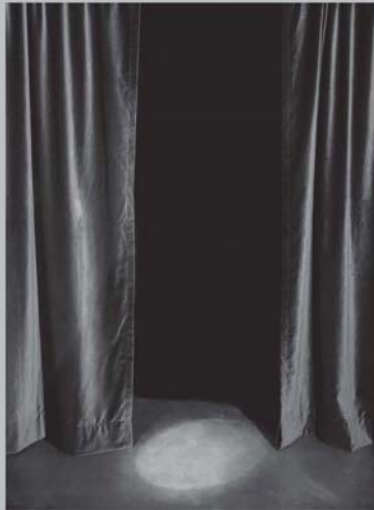


Ok, there really was  
some serious stuff  
going on

...and yes,  
there was  
the monkey



## **Worried about getting all flash and no substance with your GIS?**



**At Sidwell, we encourage you to look behind the curtain.**

Everyone's heard the phrase "Pay no attention to that man behind the curtain!" Some companies sell GIS using flash and sizzle, and hope you'll overlook the fact that their solutions have no substance, in every area from their experience, to their staff, to their reputation.

At Sidwell, we welcome our clients to visit us, see our facilities, meet our staff and call our customers. We take great pride in our ability to provide our clients with GIS solutions of substance that will serve their needs both now and in the future. To see what's behind our curtain, contact us today.



675 Sidwell Court • St. Charles, Illinois 60174 • 630.549.1000 • [www.sidwellco.com](http://www.sidwellco.com)

### CENTRAL EAST CHAPTER NEWS

The Central East Chapter of MMA met on August 4 at the 21<sup>st</sup> MMA annual meeting. The first order of business was the election of officers. The results of the election is as follows:

President: Belinka Novotny-Held, Jefferson County

Vice President: Wendy Nordwald, Warren County Assessor

Treasurer: Alice Lee, Jefferson County

Secretary: Sarah Anderson, Cape Girardeau County

Our next meeting is being planned for sometime during the first or second week in November. Plans are pending to tour the Defense Mapping Agency in Jefferson County.

An updated members list is being compiled for our chapter. If you would like to be included please send your name, address, phone, and e-mail address to [bheld@jcao.org](mailto:bheld@jcao.org).

## Aerial Services, Inc.

Mapping Your World® since 1967



### Geospatial Services Including:

- GIS Solutions
- Aerial Photography
- LIDAR
- County-wide Digital Orthos
- GPS Surveys-Ground & Airborne
- DEM/DTM Topographic Mapping
- Analytical Aerotriangulation
- Precision Scanning
- Data Conversion

Cedar Falls, Iowa

Toll Free: 877-ASI-4GIS

[www.AerialServicesInc.com](http://www.AerialServicesInc.com)



## Calling All Mappers desiring ArcGIS I and ArcGIS II training

The Education Committee is currently compiling a list of interested mappers. Ten (10) mappers are desired for the each session (one student per computer) tentatively scheduled for February 2006 at the Cuivre River Electric facility in Troy Missouri. Best guess costs per student for an ESRI Certified Instructor: two (2) day **ArcGIS I** class about \$470 and for a three (3) day **ArcGIS II** class about \$705. These best guess prices are substantially lower than normal fees due to the fact that the facility and room space are being provided to MMA at no cost. Each student fee would include the instructor fee, books / materials, and laptop rental.

Seriously Interested Mappers desiring **ArcGIS I** and **ArcGIS II** training should contact Patty Williams at:

Cuivre River Electric Coop  
PO Box 160 1112 E Cherry St  
Troy, MO 63379  
1-800-392-3709 ex 345 .....

Upon the Education Committee finding sufficient interest, additional planning, times, dates, etc. will be determined.

## FOR YOUR COMPLETE MAPPING SERVICES



**Bruce Harris**  
& Associates, Inc.

- GIS Services
- Tax Map Atlases
- Internet Mapping
- 911 Mapping
- Custom Mapping
- Photogrammetric Services
- Geodatabase Conversion
- Infrastructure Mapping

***We Put Information In It's Place!***

21 North River Street • Batavia, IL 60510

**630.761.0951**

Visit our website at [www.bruceharris.com](http://www.bruceharris.com)

## Membership Report

Please check your address label to see if you are paid up for this year. Some of you may have missed the annual meeting and still wish to receive newsletters, so please renew your membership so you don't miss any newsletters.

I will send renewal notices out in the near future to all new assessors and those not currently members. You can get a membership form off of the Missouri Mappers Association website or you can call me and I will be glad to send you a form. Dues are \$15 for the year, due each year at the annual meeting time. We will try to put an updated membership list in the next newsletter.

Thank you,

Gladys Smith

Membership Chairperson

PO Box 95

Osceola, MO 64776

417-646-2449 or 417-646-8880





## AWARDS COMMITTEE REPORT

Congratulations to the award recipients at the 21<sup>st</sup> Annual Missouri Mappers conference.

The **Mapper of the Year** award went to Kay Schenewark who has worked at the Benton County Assessors office for 28 years. Kay has been a member of MMA since it began in 1984.

The **Fireball** award was presented to Shane McDermott who is the GIS manager at Poeping, Stone, Bach & Associates, Inc. Shane has produced the MMA newsletter for 3 years.

Eddie Whitworth, Assessor of Camden County since 1997, received the **Outstanding Boss of the Year Award**. Ken Olive (Chief Deputy Assessor) and the Camden County Assessor's staff submitted the nomination.

Shannon Armstrong's effort in putting together this year's excellent annual meeting deserves applause. Her hard work earned her the **Annual Meeting** award. Shannon is employed with Sidwell.

Two individuals received special recognition of appreciation. Recognized for his contributions to MMA was Dawson "Slick" Heathman. Slick will be retiring this year. Mike Sutherland was recognized for being instrumental in helping the passage of SB210.

Kim Swisher (Kucera) was recognized for serving as President of MMA for the 2004-2005 year.

Chapter officers and committee chairs were presented with certificates of appreciation and board members received a gift of appreciation.

Congratulations to all who worked so hard to make this a successful year and for a job well done.

Belinka Novotny-Held, PMM

Awards Chairperson (2005/2006)





# Quality Workmanship Stands the Test of Time.

Your GIS is an  
investment.

Ensure its success with  
Midland GIS Solutions.

## Midland GIS Solutions

★ *Dedicated*   ★ *Reliable*   ★ *Professional*   ★ *Experienced*

*“Missouri’s Leading  
GIS Development Company!”*

*... delivering a world of management information!*



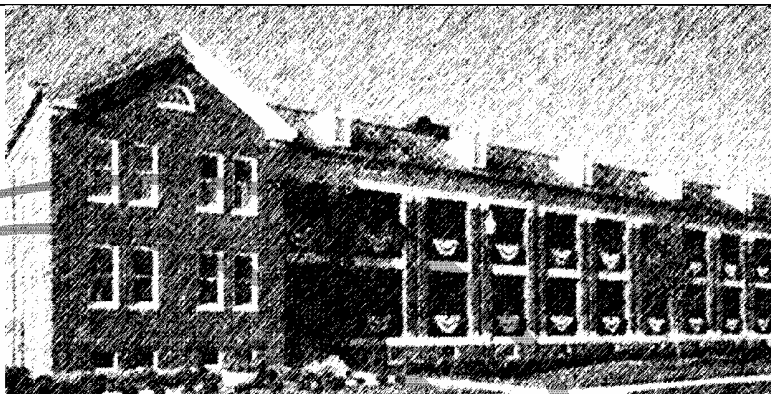
501 N Market  
Maryville, MO 64468  
(660) 562-0050  
[www.midlandgis.com](http://www.midlandgis.com)

113 Greystone Lane  
Sunrise Beach, MO 65079  
(573) 374-0885  
[info@midlandgis.com](mailto:info@midlandgis.com)

Call Toll Free:  
877-375-8633



the  
**Schneider**  
way



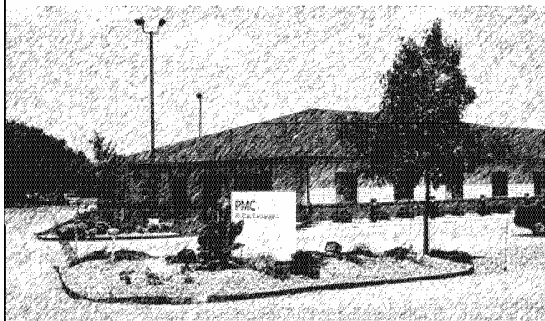
# Two Great Companies

# PROMAP

GEOGRAPHIC INFORMATION SYSTEMS

a division of  The Schneider Corporation

become *One*



**Extensive  
GIS experience**

**Client support  
BETTER than ever**

**More Resources**

**Leader in GIS**

ProMap is excited to announce we have become a part of The Schneider Corporation team. Now not only can we bring you the best that this GIS technology can offer; we can bring you more services and resources than ever before. Same expected quality, same unsurpassed client support.

We are proud to be a division of The Schneider Corporation and excited to share with you the many advantages this will bring to your organization.

To learn more about The Schneider Corporation please see [www.schneidercorp.com](http://www.schneidercorp.com).

ProMap-a division of The Schneider Corporation  
1531 Airport Road, Suite 2, Ames, Iowa 50010  
515-233-3311; [www.promap.com](http://www.promap.com)



**Poepping, Stone, Bach & Associates, Inc.**  
**Architecture, Engineering, GIS Services, Planning & Surveying**

## Parcel Mapping

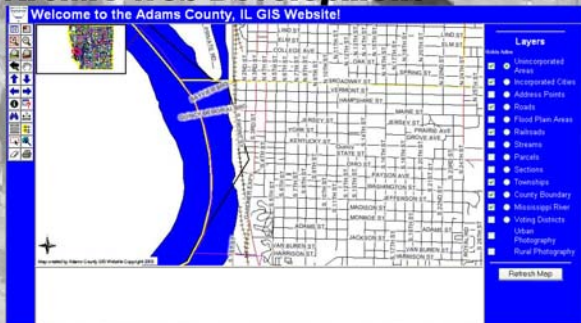


## Utility Mapping



**www.psba.com**

## ArcIMS Web Development



## Land Use Development



**Quincy Office**  
**100 S 54th St.**  
**Quincy, IL 62306**  
**Phone 217/223-4605**  
**Toll Free 877/423-4605**  
**Fax 217/223-1546**

**Hannibal Office**  
**U.S. Federal Building**  
**801 Broadway, Suite 224**  
**Hannibal, MO 63401**  
**Phone 573-406-0541**  
**Fax 573-406-0390**

**Keokuk Office**  
**3523 Main St.**  
**Keokuk, IA 52632**  
**Phone 319/524-8730**  
**Toll Free 800/249-5869**  
**Fax 319/524-7720**

**email - shanem@psba.com**  
**web- www.psba.com**

## ***TREASURER'S REPORT***

### September 30, 2005 Treasurer's Report

Beginning Balance	\$30,332.27
-------------------	-------------

#### Receipts

Dues	\$370.00	
Conference Fees	\$600.00	
Education	\$80.00	
Exhibitor Fees	\$400.00	
Golf Tournament	\$756.50	
West Central Dues	\$65.00	
Newsletter Ads	\$0	
Misc. Raffle	\$636.00	
Interest Earned	\$8.40	
Total Receipts		\$2,915.90
Beginning Balance + Receipts		\$33,248.17

#### Disbursements

Tropic Island Cruises	\$1,808.00	
Alice Lee (Food for BBQ)	\$121.76	
Bear Creek Golf Course	\$1,515.90	
Randy Lewis (Food for BBQ)	\$154.08	
Shannon Armstrong (Food for BBQ)	\$97.44	
Postmaster (stamps)	\$7.40	
Shannon Armstrong (Programs)	\$250.00	
Sew Personal (Shirts)	\$85.80	
Sun on the Run Tan & Travel (Cruise)	\$1,200	
The Resort At Port Arrowhead	\$10,758.63	
West Central (Dues Collected)	\$120.00	
Monthly Service Charge	\$16.14	
Refunds & Reimbursements	\$515.00	
Total Disbursements		\$16,650.05

Balance September 30, 2005	\$16,598.12
----------------------------	-------------

midamerica **gis** consortium  
*announces the*

10th  
biennial



# MIDAMERICA GIS SYMPOSIUM

April 23 - 27, 2006

Westin Crown Center - Kansas City, Missouri

*sharing knowledge strengthening communities facilitating communication*

information at:

**magicweb.kgs.ku.edu**

save the date



### **Publication Committee Report**

As of the creation of this issue, we have \$700 in advertising revenue, which is the most in a single month that we have been able to generate in the past three years. That is about \$100 above our normal.

We expect to print out approximately 275 newsletters, as well as emailing the link on the MMA website to multiple people and organizations.

We are still in need of information to print. If you have any stories, interesting pictures, or GIS/Mapping related news, please send them to Shane McDermott at [shanem@psba.com](mailto:shanem@psba.com).

Publication Committee

## GIS For a Better World



ESRI has been the world leader in geographic information system (GIS) software for over 30 years. ESRI offers innovative solutions that will help you create, visualize, analyze, and present information better and more clearly. Organizations around the world, as well as local, state, and federal government agencies, use ESRI GIS software to make smart and timely decisions. ESRI offers GIS solutions to help you unlock the spatial component of your valuable data.



**Find out how GIS can help your organization.**  
**[www.esri.com](http://www.esri.com) • 1-800-447-9778 • [info@esri.com](mailto:info@esri.com)**

### **Certification Committee Report**

On Thursday Aug. 4, 2005, during the MMA Annual Conference, a meeting was held for the PMM designees in attendance. A discussion of modifying the PMM designation or adding a separate designation for those individuals that do mapping in a digital format rather than ink and Mylar was held. The general consensus was that there should be some changes made to allow those individuals to receive a designation.

On Friday October 7, I met with the MMA board and received approval to proceed. In the near future the PMM committee (Tim Houtchens, Linda Reynolds, Linda Crane, Stan Balsman and Belinka Novotny-Held) and I will be meeting to make the necessary modifications. Suggestions from the general membership are welcome so please feel free to contact any of us. You can email me at [assessor.gis@callawaycounty.org](mailto:assessor.gis@callawaycounty.org). At this time our plan is to complete the modifications in time for the testing which will take place next year in May or June.

Respectfully submitted,

Dan Roe, PMM

GE Energy

# Pixel perfect.

The image quality and accuracy from our world-class digital mapping system is unsurpassed in aerial photography, creating a perfect image base for your mapping, engineering and GIS requirements.

See for yourself why GE Energy should be your first choice for advanced aerial imaging and photogrammetric mapping. Contact Don Cleveland at 816-889-1113 or email [gsinfo@ge.com](mailto:gsinfo@ge.com)



imagination at work



## **Do You Remember What Missouri Looked Like 50 Years Ago?**

We do, and we have the pictures to prove it. For over 50 years, Surdex has been mapping Missouri. We've photographed every inch of this great state many times. So if you are looking for a complete county-wide project, or a small site for development, Surdex has it covered!

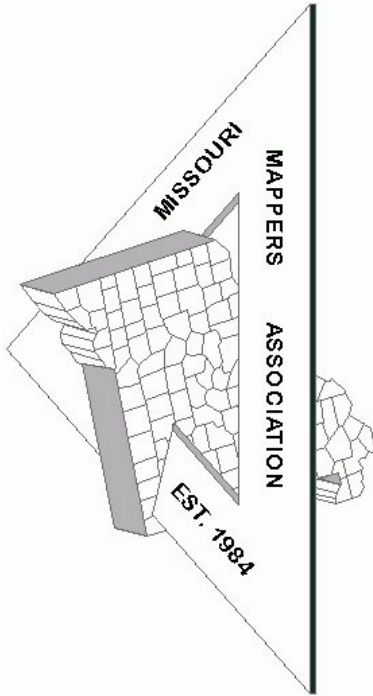


**Digital Plan / Topo Mapping**  
**Digital Orthophotography**  
**GPS Control Surveys**  
**Aerial Photography**  
**GIS Services**  
**LIDAR**

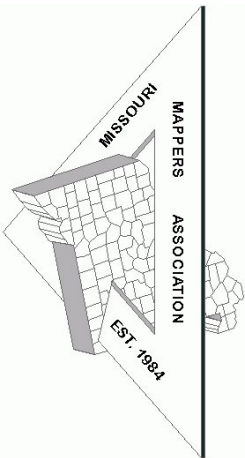
Contact us at: 636-532-3427  
520 Spirit of St. Louis Blvd., Chesterfield, MO 63005 [www.surdex.com](http://www.surdex.com)



**Missouri Mappers Association**  
**P.O. Box 1692**  
**JEFFERSON CITY, MO 65102**



Missouri Mappers Association  
P.O. Box 1692  
Jefferson City, Missouri 65102



We have plenty of ad space available for the upcoming issues. Please contact Shane McDermott at [shanem@psba.com](mailto:shanem@psba.com) for more information. Rates are as follows:

<b>Business Card</b>	3 Issues - \$25
<b>1/4 Page</b>	3 Issues - \$100
<b>1/2 Page</b>	\$50 per Issue
<b>Full Page</b>	\$100 Per Issue

Be a **Newsletter Sponsor** with a 1/4 page advertisement on the front page of one issue: \$250 Per Issue

#### ARTICLE AND NEWS SUBMISSIONS

Article and news submissions for topics that cover issues that are important to all of us can be sent via email or snail-mail to the following address for consideration for future publications.

Shane C. McDermott, GISP  
Poepping, Stone, Bach & Associates, Inc.  
100 S. 54th Street  
Quincy, IL 62301  
217-223-4605  
[shanem@psba.com](mailto:shanem@psba.com)