



MISSOURI MAPPERS ASSOCIATION

VOLUME 20, ISSUE 4

OCTOBER 2004

LETTER FROM THE PRESIDENT, KIM SWISHER

Another annual conference has come and gone. The general consensus from the evaluation forms confirmed that this was the best ever!

Thank you all very much for the opportunity to serve as President next year. I'm very excited to be leading the MMA in a year of so much optimism. Our assessor's and the State Tax Commission have worked very hard to raise the allocation per parcel and will continue their efforts in Jefferson City next legislative session. Thanks and keep up the good work. I would like to challenge each of our members to support their efforts in any way. I would also like to thank the assessors and GIS departments for their continued support of the MMA.

My goals for the coming year are as follows:

1.) Increase Membership. Please encourage your co-workers to become involved in the MMA. You can contact Gladys Smith our Membership Chairperson for an application. We will also be advertising in the assessor's newsletter and various other publications. I will also be providing brochures at various other conferences around the state to promote the MMA to county engineers, surveyors and non-participating counties.

2.) Improve Education Opportunities. I propose MMA start to re-emphasize education by providing a scholarship of sorts to one or two people per year for the IAAO mapping class and exam. MMA would pay their registration fee for the class. In return, the recipient(s) agrees to sit for the PMM exam. This will increase the number of PMMs per year in addition to providing the recipient(s) with additional training. Applicants should be

nominated by their assessor, supervisor or a current PMM and sent to Jeff Davis or Linda Reynolds, Certification Committee Co-Chairpersons. Nominations will be reviewed by the Certification committee and the recipient will be chosen by the Board of Directors.

3.) More inter-organizational cooperation. I proposed to bridge gaps between MMA, our Assessors and the Missouri GIS Advisory Committee. I will be representing MMA at the MGISAC and propose to solicit more involvement and cooperation between them, our members and our assessors. They should be more accessible and supportive of our offices. Their knowledge and data can benefit us greatly but we need to learn how to utilize their resources more efficiently.

4.) New web host. Our current web host contact is expiring. The technical committee chairperson and committee members will be responsible for soliciting offers from companies wishing to host our site. Offers will be reviewed by the committee and their recommendations will be voted on by the Board Members.

5.) More news in the newsletter. In this newsletter issue, you will find a brief questionnaire. This will include an introduction of your staff and any problems or projects you are working on. I encourage you to complete it and send it to Shane McDermott, Publication Committee Chairperson. Include photos if you can. Our newsletter should be a source of information, conversation and problem solving, not just advertising. I also encourage each of you to sign up for email delivery of your newsletter if possible. Every dollar saved on postage can be put back into the annual conference.

6.) More member participation. You may have noticed the committee sign up sheets are a little different this year. I tried to break up each committee into specific tasks. The committee list is in the newsletter and there are several positions open. If you feel you can assist in any way, please sign up to help. It seems each year a few people are called upon to do most of the work. Even if you volunteer to do something as simple as send out thank you cards, or make a few phone calls or send a few emails it would help greatly.

Board meetings are tentatively scheduled for October 1, 2004, March 4 and June 3, 2005. Meetings will begin at 10:00 am in the Multi-purpose room of the Phelps County Courthouse in Rolla. Directions are posted on the website. All members are invited to attend. If you have any concerns or suggestions you would like discussed, please let me know and I will put them on the agenda.

I am looking forward to leading the MMA in its 21st year and hope you will all provide as much support and enthusiasm as you can. Please feel free to give me your feedback, concerns (and especially your compliments).

If you have any suggestions about the theme for next year's conference, please let me know.

Thank you again.

Respectfully submitted,
Kim Swisher, President

INSIDE THIS ISSUE:

BIOGRAPHIES	3-7
INTERVIEW	8
COMMITTEE LISTS	10
THE POLYGON	18
PUZZLE	20

SPECIAL POINTS OF INTEREST:

- *Biography's of the MMA*
- *Interview with Tim Daniels - Director of Homeland Security for the State of Missouri*
- *Revival of the Northeast Chapter of the MMA*
- *Annual Meeting pictures and goodies*
- *Interesting Puzzle submitted by a member*

IAAO MAPPING CLASS SCHOLARSHIP

The Missouri Mappers Board is pleased to announce the award of our first IAAO mapping class scholarship to Alice Lee of Jefferson County. Alice has been active in the MMA since 1999. She has volunteered to chair and serve on numerous committees throughout her membership and has been Treasurer for the Central East chapter for three years. She was nominated for the scholarship by Belinka Held, PMM, and her nomination was approved by the MMA Board of Directors by "e-vote" on August 25th.

As recipients of our scholarship, MMA will pay the registration fee for Alice to participate in the IAAO mapping course in September. In return, Alice agrees to take the PMM exam before December 31, 2005.

It is the Board's hope to continue awarding these scholarships to worthy individuals as often as possible. Taking the course will not only benefit the individual and their Assessor, but increase the number of Professional Missouri Mappers within the MMA. If you would like to nominate someone for a future scholarship, please contact a member of the MMA Board.

Aerial Services, Inc.

Mapping Your World® since 1967



Geospatial Services Including:

- GIS Solutions
- Aerial Photography
- LIDAR
- County-wide Digital Orthos
- GPS Surveys-Ground & Airborne
- DEM/DTM Topographic Mapping
- Analytical Aerotriangulation
- Precision Scanning
- Data Conversion

Cedar Falls, Iowa

Toll Free: 877-ASI-4GIS

www.AerialServicesInc.com

BIOGRAPHY'S

KIM SWISHER - PRESIDENT

Hi, I'm Kim Swisher, MMA President for 2004/2005. I am a native of Southwest Missouri. I grew up on a farm near the small town of Grovespring in Wright County and attended Hartville High School. During my years at College of the Ozarks in Branson, I met and married my husband of 26 years, Greg. We have been residents of St. Louis County for almost 20 years and currently reside in Ballwin. Although we have no children, we are the devoted parents of our Pomeranian Annie, who is definitely the boss of the house.

I have been involved in the MMA since 2000, and have served as a Board Member and Organization Treasurer since 2001. Other committee positions

include Legislative Co-Chair and Conference Exhibitor "wrangler". I don't remember exactly why I became so involved in MMA. But it probably had something to do with my two "caballeros" Belinka Novotny-Held and Patty Williams. I do know that the MMA has allowed me the great opportunity of meeting new friends from around the State.

I have been employed in the photogrammetric and geospatial industry since 1990. In August 2004, I joined Kucera International as their Midwest Technical Representative. I have performed as project manager/coordinator for over 2000 projects, including topographic/planimetric mapping, aerial photo enlargements, plan and

profile mapping, rectified enlargements, scanning, digital orthophotos, and GIS solutions. I especially enjoy forming cost saving consortiums involving federal, state, county, municipal, and local entities. Since joining Kucera, I have acted as the primary business development liaison for Midwest organizations representing Kucera at a myriad of industry associations, forming strong client associations and vendor partnerships.

My Missouri County project management / coordinator experience includes, Washington, Miller, Butler, Mississippi, Cole, Camden, Cape Girardeau, New Madrid and Taney.

As frustrated "beach

bums", my husband and I love to travel, especially places where we can enjoy scuba diving. Our most recent trip was in July, to Paradise Island Bahamas with our 13 year old niece. I am an avid reader and can often be found wandering the aisles of our local Borders bookstore. When forced to stay home, we spend a lot of time on our "fixer upper" house. We recently finished our basement, or as it's now known... "The Drunken Parrot Pub and Casino!" Stop by if you're in the neighborhood. I may be a City girl now, but my small town upbringing (and Grandma) taught me well. Company is always welcome and you'll never leave without a good meal!

RANDY LEWIS - VICE-PRESIDENT

I am a Professional Land Surveyor, and have a surveying and engineering company in Warrenton MO. I have been in surveying since 1981, and the Deputy Warren County surveyor since 2001. The company does subdivision design, boundary survey, Lake Dam structure design, photo control for photogrammetry companies. I am the Broker/Owner of Country Tyme Realty in Wright City, Chairman of the board of

directors of the Wright City Fire Protection district, Member of American Congress on Surveying and Mapping, member of the Missouri Society of Professional Land Surveyors, Central committee member of Warren County Republican Party.

I have two boys Kyle 11, and Chad 8 who I have every other week from Monday to Monday. When I don't have the boys I enjoy hunting, fishing, golfing, and anything else

that would keep me outdoors, away from the office.

I joined the Missouri Mappers Association when I started surveying for my first job and was needed to draw line work on the tax maps for the county. As you know, 1981 was the beginning of some Counties reassessment program, and since that time my company has kept all the Warren county Assessment maps up to date. On November 10, 1815 Surveyors es-

tablished the initial point of the 5th Principal Meridian that started the survey system of our state. Surveyors have done a very good job with record keeping and mapping. Since 1981 Surveyors and Assessors have come together to make mapping in their counties even better, and the connection with them, at least in my county has been even stronger in the last twenty years.

BIOGRAPHY'S

STEPHEN DAW

Stephen joined Shafer, Kline & Warren, Inc. in 1999 as the Director of the Geographic Information Systems (GIS) and Facilities Management (FM) Department.

Stephen has more than 15 years of experience working in all phases of GIS

development and production.

Prior to joining SKW, Stephen worked in the electric industry implementing GIS systems and developing SCADA.

Stephen has extensive experience in GIS production. He worked five years

in GIS conversion and development and two years in digital orthophoto production.

Stephen worked for several companies across the US.

Stephen earned his degree in 1991 in Geography from Brigham Young Uni-

versity in Provo, Utah.

When Stephen is not working on GIS projects he enjoys working on his two acres in rural Ray county, Missouri, where he lives with his wife Sue and their five children.

SHANNON ARMSTRONG - SECRETARY

Shannon Armstrong is an account manager for The Sidwell Company's Missouri territory. Shannon provides technical information and consultation to existing and prospective clients on GIS, photogrammetry and mapping.

Prior to Sidwell, Shannon managed the American Planning Association's technical research service

in Chicago, Illinois. This included assisting planners and professionals in allied fields with identifying best practices in urban and regional planning in the U.S and Canada.

Shannon has been published in a variety of publications on topics on land use law, GIS, adaptive reuse strategies, and managing rights-of-way.

Prior to APA, Shannon was a project coordinator for the City of Chicago planning and development department and her responsibilities included using GIS to assist with the City's open space and park development efforts.

Shannon received her master's degree in urban planning and policy from the University of Illinois at

Chicago and has completed certificate coursework and experience working in SPSS, HTML, Unix, MapInfo, Microsoft Access, ArcInfo and ArcView.

For fun, Shannon goes to the beach, rides her bike, does yoga and spends time with her 10 year old god daughter.

MARTI SUITER—TREASURER

I was born and raised in San Angelo, Texas, graduated from San Angelo Central High School in 1971, attended two years of college at University of North Texas (formerly North Texas State University), completed a medical secretarial course at Fort Worth School of Business in 1974, worked at a hospital in Fort Worth, Texas, moved to Missouri and worked in the Hermitage and Wheatland School Districts, returned to Texas for five years and worked in the Keller School District

and to Missouri in 1991.

In 1974, I married Tim Buckner and together we raised three boys, Timothy Jr, Christopher & Kyle. We parted company in 1999 and in 2001 I married Jim Suiter. Between the two of us, we have eight children, seven grandchildren, and two grandchildren on the way. We are very busy with our jobs, our church family and our gospel trio "With One Voice". I enjoy reading, crossword and/or jigsaw puzzles, playing the

piano, singing, and of course - MAPPING.

After 15 years of working within the public school systems of Texas and Missouri, I started work in the Hickory County Assessor's Office in 1991. I attended my first MMA Conference that summer, and got "hooked". I truly enjoy the work involved in my job and am grateful for having been given the opportunity to obtain a new career. Our office employs four people (which includes the assessor). We

are all involved in all the different aspects of the office, and I feel that is one reason we all get along so well. I earned my PMM designation in 1998, have been on the MMA Executive Board a total of six years (counting this one as Treasurer), and have chaired several committees. Not only that, but I have made some very good friends in the organization over the last 13 years, and I hope to make many more over the next ??.

BIOGRAPHY'S

LINDA REYNOLDS, PMM - CERTIFICATION COMMITTEE CHAIR

Business: Became a member of the M.M.A. in 1992, when I was hired by the Taney County Assessor's Office to do property mapping. After meeting all the requirements in 1994, I became a P.M.M. Taney County mapping, in the years

that I have been here, evolved from the light table, pin and ink to ArcMap 8.3 but soon to be 9.0. Thanks to all the help we have gotten from Curtis Copeland (City of Branson) and Gary Morgan (Taney County).

Personal: I am a widow, with two sons, two step-sons and one step-daughter. My sons have blessed me with three grand-children and my step-children have totally blessed me with 12 grand-children and 4 great-grand-children. Which they are a

great part of my life. My hobbies are motorcycle riding, mediational drumming, going to ballgames, camping and hiking.

SHANE MCDERMOTT, GISP - PUBLICATION COMMITTEE CHAIR

Shane McDermott, GISP. GIS Manager for Poepping, Stone, Bach & Associates, Inc. of Quincy, Illinois & Keokuk, Iowa. We are also opening a new office in Hannibal, Missouri this fall to give us a better presence in the state. I have an AS in Computer Science and am currently pursuing BS in Business at Quincy University. I have a little over 8 years in the field of GIS and Cartography. On June 1st I was certified as a GISP (GIS Professional) by the GIS Cer-

tification Committee, and was only the third in Illinois to do so.

As the GIS Manager I am responsible for managing all GIS related projects. I currently have 4 GIS Technicians working under me, and that number seems to be growing constantly. I also provide all of the Sales & Marketing for our GIS Services, which cover all of Missouri, Illinois, and Iowa.

I moved to Illinois from

Texas in 2001, where I spent the previous 5 years. I worked for a company called GeoInfo, Ltd. where I was a project manager for parcel mapping projects. I started my GIS career in Dallas, Texas working for Mapsco, Inc. creating street guides for major cities across Texas.

I have been a member of the MMA for 2 year, and this will be my 2nd years as the Chair of the Publication Committee.

I work closely with the Illinois

Geographic Information System Association as well as the Iowa Geographic Information Council. It is a great way to help further the knowledge and use of GIS, as well as to get to know a lot of the fantastic people that are involved in these organizations.

I was recently married (April 17, 2004), and have just moved into our new home, which keeps me very busy. Some of my hobbies include hunting, fishing, fast-pitch softball, and volleyball.

BRIAN BAKER - EDUCATION COMMITTEE CHAIR

Brian Baker, CP (Certified Photogrammetrist). Project Manager for Surdex Corporation of Chesterfield Missouri. I have an BS in Geography. I have a little over 17 years experience in the field of Photogrammetry. After receiving my degree from Southwest Missouri State University, I took a position with Geonex in the Chicagoland area. I worked as a stereo compiler for 7 years at Geonex and then decided I wanted to be closer to where I grew up, Ozark Missouri. You don't

realize how nice the state of Missouri is until you move away for awhile, so I have to include in this bio that I am proud to be a Missourian.

In 1995, I took a position with Surdex as a senior stereo compiler and have served as an Instructor, Production Manager, Orthophotography Department Manager and currently Project Manager. Over the past couple of years, I have managed projects from Maryland to Nebraska. Project management has allowed me to travel and

meet many interesting people. I enjoy the satisfaction of seeing a project go from it's infant stages to an actual project to a final delivery. It is my goal to make every customer totally satisfied with the project and it's management.

I am married and have two wonderful boys, ages 2 and 5, needless to say they keep me busy. We recently moved into a new house in a golf course community which leads me to my hobbies. In my spare time I enjoy spending time with my

family, traveling, golfing, hunting and fishing.

BIOGRAPHY'S

DARREL KING - LEGISLATIVE COMMITTEE CHAIR

Darrel L King took office as the Assessor of Moniteau County on June 1 1991, and has been re-elected in, 1992, 1996, 2000 and 2004.

And he has served as the Chair of the Assessor's Legislative Committee for the past five years.

Darrel is also involved in:

The Missouri Association of Counties, (MAC) - First serving as the District 10 Director then being elected Treasurer in 2001 and now serves as the President-Elect will take office as President in Nov of this year.

The Mid-Mo Regional Planning- Has held the office as Budget Chair and Treasure and the only county official not a county commissioner on the Executive Board.

The Missouri Mappers- Chairman Legislative Committee

CO-MO Cares Trust, Inc (a division of CO-MO Electric Cooperative)- Vice-Chair

California Progress Incorporated- Past Treasurer member of the Board of Directors

Moniteau County Joint Economic Development Commission- Board Member

California Lions 2nd Vice President

Church Board of Elders

GLADYS SMITH - MEMBERSHIP CHAIR

Gladys Smith, Assessor of St. Clair County and Membership Chairperson

I am a single mother of three sons, Chad, 29, and wife, Julie live in Concordia with two of my granddaughters, Jacey, 4 years old, and Caley, 18 months. Clay, 27, and wife, Abby live in Sedalia with my youngest granddaughter, Caitlyn, 1 year old. Matt, 24, (my baby boy) and finance, Heather Drummond,

live in Warrensburg.

I haven't had a lot of time for my favorite hobbies the last year, but enjoy reading, fishing, gardening, and working with my flowers.

I do however, find time to spend with my precious family as much as possible and bowl one night a week.

I started working as Deputy Assessor and Mapper in St. Clair County July 23, 1990.

The Assessor, Bill Crabtree, retired in April of 2003 and I was appointed to finish his term.

I still do all of the transfers, mapping and inking, as that is my favorite part of the job, along with working with the public.

I was encouraged to join MMA in 1992, by Loraine Boyd, our Technical Assistant at that time. I have served as

vice-president and director of the board and have been membership chairperson for several years.

Having won my primary election and I am now working on winning the general election in November to remain in office.

JIM LASCALE - INFORMATION TECHNOLOGY CHAIR

I have been the Senior Engineering Technician for the City of Liberty since March 2, 1998. Prior to that I was with the City of Overland Park, Kansas. I am responsible for maintaining and produce maps as needed for the City. I supervise one Techni-

cian. Since coming to the City of Liberty, an effort has been made to computerizing the mapping process for the City. In this effort the city has utilized GPS (Global Positioning System) units to perform an inventory of their assets. This is to assist in com-

plying with the government accounting procedure called GASB 34. The City is going to having a computerized Geographic Information System that will allow us to service our customer in a more timely and efficient manner. I enjoy my involvement in Mis-

souri Mappers Association. I am also on the Missouri GIS Advisory Committee and have worked strongly toward the formation of the Local Government Subcommittee.

USGS ESTABLISHES NATIONAL GEOSPATIAL PROGRAMS OFFICE

In a strategic move to strengthen geographic research and to consolidate geospatial data programs, Director Chip Groat announced today the creation of a National Geospatial Programs Office. The move to transfer *The National Map* from the Geography Discipline to the Geospatial Information Office (GIO) will allow existing expertise in the field of geography at the USGS to focus attention on geographic research and enhance USGS leadership in both geospatial programs and geographic research.

The reorganization will consolidate USGS geospatial programs under the

new National Geospatial Programs Office located within the Geospatial Information Office (GIO). The National Geospatial Programs Office will oversee the portfolio of national geospatial programs for which the USGS has responsibility, including the Federal Geographic Data Committee, the Geospatial One Stop project, the Department of the Interior Enterprise Geospatial Information Management activity and *The National Map*.

The decision to reorganize is in direct response to discussions with constituent groups about how best to meet their geospatial

data needs and recommendations from a report by the National Research Council of the National Academies. The report recommended the USGS should give higher priority to fundamental geographic research directed toward:

- improving citizen involvement in decision making for issues related to natural sciences by creating citizen-friendly geographic interfaces with all the Survey's primary spatial datasets;
- expanding the utility and application of place-based science by conducting integrative place-specific research in addition to topical research in individ-

ual disciplines; and
 · enhancing the effectiveness of decision-support systems with increased geographic input and more effective map-like products as output.

The USGS serves the nation by providing reliable scientific information to describe and understand the Earth; minimize loss of life and property from natural disasters; manage water, biological, energy, and mineral resources; and enhance and protect our quality of life.

KUCERA INTERNATIONAL INC.

Providing high quality, cost-effective aerial mapping services to Missouri counties and cities.

Aerial Photography

Ground and Airborne GPS/IMU

LIDAR

Digital Terrain/Elevation Models

Digital Orthophotography

Digital Planimetry/Topography

Cadastral Mapping

Data Conversion

ORTHOSCAPE® 3D GIS



Kucera International Inc. is a leading provider of aerial mapping and related geomatic services with over 50 years of experience and production offices located throughout the United States.

Kucera customers are served by a skilled staff of experienced professionals, including licensed/certified photogrammetrists, mappers, surveyors, geodesists, engineers, planners, and computer/GIS technicians. Our team works closely and cooperatively with each client to achieve optimal results and ensure time and cost efficiency.



Kucera Midwest

113 Birchwood Drive, Ballwin, MO 63011

Tel (636) 527-6206, Fax (636) 527-6209

k.swisher@kucerainternational.com, www.kucerainternational.com

TIM DANIELS, DIRECTOR OF HOMELAND SECURITY, STATE OF MISSOURI

Q. How long have you been the Director of Homeland Security?

A. On September 26, 2001 Tim was appointed as a special advisor, the first in the nation. On September 11, 2002 Tim was appointed as the first Director of Homeland Security for the State of Missouri.

Q. Are you in office for a specific period of time? If so, how long?

A. No, this is an appointed position. Tim will be in office until he resigns or the governor replaces him.

Q. Where are you originally from?

A. Laramie, Wyoming.

Q. Background information? College? Military Service? Prior Employment that led to this current position?

A. Tim attended the University of Wyoming, and has a degree in International Relations. He was in the Army for twenty-eight years total, and retired as a Colonel in August of 2001. While in the Army Tim worked with classified construction, NATO Infrastructure, and was the Army's long range planner at the Pentagon. Eight years of his army career was served in Missouri.

Q. Personal information? Married? Children? Pets? Hobbies?

A. Tim is married to Carol and lives in Columbia, Missouri. They have a daughter

and a son. Tim's son Tom is a senior at MU, and his daughter Kelly is a sophomore at Truman. Tim's favorite hobby is golfing.

Q. What are your major responsibilities as director of Homeland Security?

A. There are three major jobs:

1. Missouri liaison and representative to Homeland Security.

2. Organizes all Homeland Security at a State level.

3. Coordinates and integrates Homeland Security throughout the entire state.

Q. Is there a lot of correlation and cooperation between the State and Federal level?

A. The main difference deals in border control and transportation, there is a big difference between state and federal rules, but they are making progress in establishing standard goals and response teams and have more situational awareness.

Q. How much safer overall is the State of Missouri than it was in 2001?

A. This is difficult to generalize, Tim says they are better prepared to respond to a situation, they have made improvements on how the private sector protects their property, railroads and factories are much more protective, the health alert network is very



good, and the syndromics surveillance indicates a trend in something and deals with it early. Tim says they still do not have adequate fully integrated plans, and the detect, deter, and prevent is not as effective as he would like it to be.

Q. What are the major changes that have been implemented since your becoming Director?

A. The creation of twenty-eight Home Land security response teams that provides advanced hazmat response teams, led the nation in medical improvements (dept of health and senior services), emergency patient tracking systems, improved the ability to respond, and improved the cooperation between stakeholders and participants.

Q. What are the major items that you are currently working on for the

future?

A. The creation of robust information sharing, need to work on spending money more effectively.

Q. How much funding did the State of Missouri receive from the Federal Government in 2004 for Homeland Security, and what were the major items that funding was used for?

A. \$100 million dollars overall, \$64 million to capabilities of emergency responders, \$30 million for health and well-being.

Q. Areas of Homeland Security, such as Borders & Transportation, Critical Infrastructure & Key Asset protection, Evacuation Planning, and other areas rely heavily on mapping and geographic information. How do you use mapping or geographic information to assist you in these areas?

TIME DANIELS INTERVIEW CONTINUED

A. Mapping is going to explode, Homeland Security is going to require GIS data. Tim says if you get a grant they will want a GIS to go along with it. Currently MerGis (Missouri Emergency Response GIS, hosted by Dept. of Health and Senior Services) is up to about 200 layers of GIS.

Q. Are there grants/funding available for County Assessor's to ap-

ply for assistance in developing or maintaining a County GIS system?

A. It is too early to say, but we need to rationalize how we will acquire all this data, Tim says he would guess that in the future funding will be made available, but when, he does not know.

Q. How do you see Homeland Security effecting freedom of information,

such as access to public records?

A. They have already passed several exceptions on the Missouri Sunshine Law, basically if information deals with security plans and could impact safety, that info is excluded, if someone voluntarily gives information it is protected. There are a lot of grey areas; this should be dealt with on a case by case basis.

For more information on Homeland Security in the State of Missouri, please contact:

Office of Homeland Security

PO Box 809

Jefferson City, MO 65102

Phone: 573-522-3007

Fax: 573-751-7819

www.homelandsecurity.mo.gov/

REVIVAL OF THE NORTHEAST CHAPTER OF THE MMA

The Missouri Mappers Association is in the process of reviving the Northeast Chapter. There are 18 counties that represent the Northeast Chapter, and currently only about half of the counties are participating in the Missouri Mappers Association.

It is our intent to attempt to increase the membership in that area, as well as to begin to have

quarterly Northeast Chapter meetings.

If you are interested in participating in the Northeast Chapter, please contact Shane McDermott at 217-440-8689 or email shanem@psba.com. The first quarterly meeting has not been scheduled, but would be around December or January. Poepping, Stone, Bach & Associates, Inc. is

currently in the process of opening a new office in Hannibal, Missouri and will host the Quarterly Meetings in their conference room. More information and details will be made available as the Chapter revival progresses over the next few months.

The coverage area of the Northeast Chapter is displayed in the map below.



MMA EXHIBIT

MMA has a conference exhibit that fits on a six foot table and can be used by any of the membership to take to various meetings for the use in promoting our organization. If you would like to reserve it for a meeting, contact Jennifer Peterson @ 417-831-8430 or

jennifer.peterson@cityutilities.net. It's also time to update the information and items we have been using for the exhibit. If you would like to help create a new conference/meeting exhibit, or have ideas about what should be included, please contact Jennifer.

MISSOURI MAPPERS ASSOCIATION
2004 - 2005 COMMITTEE LIST

The Chairperson for each committee will be responsible for coordinating and supervising other members of their committee to make sure tasks are completed and submit a quarterly report to the Board of Directors and for the Newsletter

	<i>Name</i>	<i>Phone</i>	<i>Email</i>
Executive Committee:			
President	Kim Swisher	636-527-6206	gkswish@sbcglobal.net
Vice President	Randy Lewis	636-456-2615	A1mapmkr@hotmail.com
Secretary	Shannon Armstrong	630-805-1761	sarmstrong@sidwellco.com
Treasurer	Marti Suiter	417-745-6346	hicoassessor@positech.net
Second Year Board Member	Steve Daw	816-221-6611	daw@skw-inc.com
First Year Board Member	Judy Logan		
Immediate Past President	Jennifer Peterson	417-831-8430	jennifer.peterson@cityutilities.net
Annual Meeting:			
Chair Person	Shannon Armstrong	630-805-1761	sarmstrong@sidwellco.com
Exhibitors:	Steve Daw	816-221-6611	daw@skw-inc.com
Decorations:			
Door Prizes from Sponsors:			
Conference Program:			
Coordinate Food and Catering:	Belinka Novotny-Held	636-797-5467	bheld@jcao.org
	Patty Williams	636-528-8261	pwilliams@cuiivre.com
Conference Name Tags:	Sandy Estes	816-233-8716	bsmestes@msn.com
Golf Tournament:	Jim Kyle	417-357-0363	doewiggler@aol.com
Putt-Putt Tournament:			
Schedule & Coordinate Speakers:			
Coordinate Sunset Cruise			
Assist where needed	Belinka Novotny-Held	636-797-5467	bheld@jcao.org
Assist where needed	Alice Lee	636-797-5467	
Assist where needed			
Awards Committee:			
Chair Person-Order Awards	Marti Suiter	417-745-6346	hicoassessor@positech.net
Thank You Cards & Certificates	Stephanie Hyder-Stevens	417-859-3500	shyderstevens@pcis.net
Speaker Gifts			
Assist where needed	Dan Roe	573-642-0768	assessor.gis@callawaycounty.org
Assist where needed	Linda Crane	573-886-4260	lcrane@boonecountymmo.org
Assist where needed			
Publication:			
Chair Person-Prepare and mail newsletter	Shane McDermott	217-223-4605	shanem@psba.com
Contribute content	Jennifer Peterson	417-831-8430	jennifer.peterson@cityutilities.net
Contribute content			
Assist where needed	Marti Suiter	417-745-6346	hicoassessor@positech.net
Assist where needed			
Assist where needed			

Information Technology: Chair Person-Website Update & Maintenance	Jim LaScala	816-792-6000 x3126	jlascala@ci.liberty.mo.us
Solicit Possible Web Page Hosts	Mark Dupree	630-549-1010	mdupree@sidwellco.com
Assist where needed	Kevin Rasmussen	573-364-1891	s[dr,am@fismail.com
Assist where needed	Jennifer Peterson	417-831-8430	jennifer.peterson@cityutilities.net
Assist where needed	Patsy Alexander	417-546-7242	patsya@co.taney.mo.us

Membership: Chair Person Maintain & Update Membership List	Gladys Smith	417-646-2449	glad@tri-lakes.net
Prepare Ads for membsrship drive			
Assist where needed	Stephen Daw	816-221-6611	daw@skw-inc.com
Assist where needed	Stephanie Hyder-Stevens	417-859-3500	shyderstevens@pcis.net
Assist where needed	Barbara Kaszuba	417-237-1030	barbarak@ecarthage.com

Certification: Chair Person-Coordinate IAAO Scholarship with President & Board Schedule PMM Exam	Jeff Davis Co-Chair Linda Reynolds Co-Chair	573-886-4262 417-546-7242	jdavis@boonecountymo.org lindar@co.taney.mo.us
Score PMM exam	Tim Houtchens	417-546-7242	timh@co.taney.mo.us
Score PMM exam	Belinka Novotny-Held	636-797-5467	bheld@jcao.org
Assist where needed	Stan Balsman	573-547-8357	sbalsman@semorpc.org
Assist where needed	Linda Crane	573-886-4260	lcrane@boonecountymo.org

Historical: Chair Person-Organize & Maintain Photos & History	Kim Swisher	636-527-6206	gkswish@sbcglobal.net
Assist where needed	Linda Crane	573-886-4260	lcrane@boonecountymo.org
Assist where needed	Marti Suiter	417-745-6346	hicoassessor@positech.net
Assist where needed			

Education: Chair Person-Work with Certification Committee Chair to organize & schedule continued education	Brian Baker	636-532-3427	brianb@surdex.com
Assist where needed	Kevin Dicks	217-223-4605	kevind@psba.com
Assist where needed	Larry Bollinger	314-615-1179	lbollinger@stlouisco.com
Assist where needed			

Legislation: Chair Person-Work with Assessors Committee to assist passage of favorable legislation	Darrel King	573-796-4637	montcnty@socket.net
Assist where needed	Kim Swisher	636-527-6206	gkswish@sbcglobal.net
Assist where needed	George Frink	660-248-3400	
Assist where needed	Susan Oser	660-248-3400	
Assist where needed	Dan Roe	573-642-0768	assessor.gis@callawaycounty.org
Assist where needed	Randy Lewis	636-456-2615	A1mapmkr@hotmail.com

Poepping, Stone, Bach & Associates, Inc.

Architecture, Engineering, GIS Services, Planning & Surveying

Parcel Maintenance

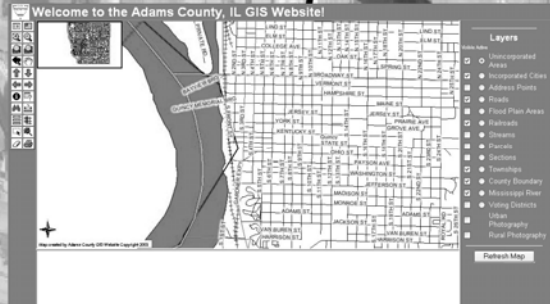


Utility Mapping



www.psba.com

ArcIMS Web Development



Land Use Development



100 S. 54th St. 3523 Main St.
Quincy, IL 62305 Keokuk, IA 52632
217-223-4605 319-524-8730
email - shanem@psba.com
web- www.psba.com



MMA ANNUAL GOLF TOURNAMENT RESULTS

Winners this year in the 5th annual MMA golf tournament

1st place A flight

Jim Kyle
Glen Nicoll
Fran Nicoll
Mark Burke

1st Place B Flight

John Teale
Matt Sorensen
Don Hagen
Greg Teale

Dead Last:

Shane McDermott
Joe Darnell
Robert Harley
Patrick Rogers

Closest to the Hole:
2 Tom Sanders

10 Jim Angerer

16 Glen Nicoll

Longest Putt: Don Hagen

Longest Drive: Sandy Estes

Thanks again to all of the exhibitors who provided prizes for this years event.

And for those that missed out, don't forget to sign up for next years event and have a great time with the rest of us.



PROFESSIONAL MAPPERS



Tim Houtchens, Barbara Kaszuba, Stan Balsman, Jeff Davis, Dan Roe, Marti Suiter, Linda Crane, Belinka Novotny-Held, Christy Linhart, Linda Reynolds

OUR NEW BOARD



What am I?

I have seas but no water, coasts with no sand, towns but no people, mountains with no land.

Answer - **Map**

From the Farmers
Almanac.



Missouri's Proven GIS Data Provider

- ★ County Assessor's Mapping for over 20 years
- ★ Cadastral Mapping for over 30 years
- ★ GIS Development in 30 Counties in Missouri
- ★ Over 60 GIS Projects in Missouri

- | | |
|--------------------------|-------------------------------|
| ➤ County Government | ➤ GIS Development |
| ➤ Municipal Government | ➤ Cadastral Mapping |
| ➤ Private Business | ➤ Utility Mapping |
| ➤ Regional Associations | ➤ Parcel Data Conversion |
| ➤ Educational Facilities | ➤ Needs Assessments |
| ➤ Institutions | ➤ Grant Writing |
| ➤ Transportation | ➤ GPS Services |
| ➤ Homeland Security | ➤ Professional Land Surveying |



... delivering a world of management information!



Midland GIS Solutions

501 N Market
Maryville, MO 64468
(660) 562-0050
www.midlandgis.com

113 Greystone Lane
Sunrise Beach, MO 65079
(573) 374-0885
info@midlandgis.com

Toll Free: 877-375-8633





Bruce Harris
& Associates, Inc.

Complete Mapping Services

GIS Services

Infrastructure Mapping

Tax Map Atlases

Internet Mapping

Map Maintenance

911 Mapping

Custom Mapping

Photogrammetric Services

We put information in it's place!

21 North River Street ~ Batavia, IL 60510

Telephone 630.761.0951

Visit our website at www.bruceharris.com

AWARDS COMMITTEE REPORT

The 20th Annual Meeting of the Missouri Mappers Association was well attended and the awards were presented as part of the program on Friday morning. The following is a list of those receiving awards for the 2003-2004 year.

Framed Certificates:

Shane McDermott	Publication Committee Chair
Kevin Rasmussen	IT Committee Chair
Gladys Smith	Membership Committee Chair
Belinka Novotny-Held	Certification Committee Chair
Marti Suiter	Historical Committee Chair
Brian Baker	Education Committee Chair
Darrel King & Kim Swisher	Legislation Committee Chair
Deanna deJarnette	West Central Chapter Chair
Randy Lewis	East Central Chapter President
Maria Jaggie	East Central Chapter Vice-President
Alice Lee	East Central Chapter Secretary
Sherry Turner	East Central Chapter Treasurer

There were five people who had the distinct honor of being members of MMA for the entire 20 years (beside those who have attained lifetime membership by being founders). These five people were also given framed certificates and are:

Stan Balsman	SEMO Regional Planning Commission
Christy Linhart	Cooper County Assessor's Office
Glen Nicoll	Barry County Assessor
Kay Schenewark	Benton County Assessor's Office
Ronnie Simmons	New Madrid County Assessor

Gifts were given to the 2003-2004 Executive Board as follows:

Jennifer Peterson	President
Barbara Kaszuba	Vice-President
Belinka Novotny-Held	Secretary
Kim Swisher	Treasurer
Randy Lewis	Director
Steve Daw	Director
Patty Williams	Immediate Past President

Plaques are regularly presented to those special members who have made themselves known through MMA. These special awards are as follows:

Randy Lewis	Fireball Award
Deanna deJarnette	Mapper of the Year Award
Larry Bollinger	Education Award
Steve Daw	Annual Meeting Award
Jennifer Peterson	Past President Award

Please remember that we will soon be sending out the nomination forms for Mapper of the Year, so keep your eyes open to the possibilities of another mapper being awarded this honor.

MEMBERSHIP COMMITTEE REPORT

We currently have 40 Counties with 179 paid members, including exhibitors. Renewal letters were mailed out on September 2 to 2004 members not renewed and also to all counties not currently MMA members. Please, if a letter comes to someone no longer working in your office, let me know so I can take the name off the membership list.

Respectfully submitted,

Gladys Smith, Assessor, Membership Chairperson

PO Box 95

Osceola, MO 64776

417-646-2449



GIS For a Better World

ESRI has been the world leader in geographic information system (GIS) software for over 30 years. ESRI offers innovative solutions that will help you create, visualize, analyze, and present information better and more clearly. Organizations around the world, as well as local, state, and federal government agencies, use ESRI GIS software to make smart and timely decisions. ESRI offers GIS solutions to help you unlock the spatial component of your valuable data.



Find out how GIS can help your organization.
www.esri.com • 1-800-447-9778 • info@esri.com

Copyright © 2002 ESRI. All rights reserved. ESRI and the ESRI globe logo are trademarks of ESRI, registered in the United States and certain other countries; registration is pending in the European Community. www.esri.com and info@esri.com are service marks of ESRI.

THE POLYGON (A Mapping Building Block)

The best I can recall, while attending the University of Missouri at Rolla (Missouri School of Mines and Metallurgy) in the early 1960's I was introduced to my first POLYGON. This was pretty technical stuff for a high school graduate whose world had revolved around living at home and playing high school sports. I stayed in college, obtained a degree, and had an opportunity to learn more about POLYGONS (as well as other stuff that I thought I would never use or need in life). This however did not prove to be the case with POLYGONS and a basic understanding of them was essential in my chosen career as a Professional Land Surveyor.

What exactly is a polygon? A common definition for a POLYGON is: a closed plane figure bounded by straight lines.

This definition seemed easy enough to me when I was a freshman in college and I even grasped the concept that a triangle, square, rectangle, etc. were special names for a particular type of a polygon. The smallest polygon would be what we call a triangle (three-sided figure) and to my knowledge one can have as many sides to a polygon as needed as long as it forms a closed plane figure (there are also spherical polygons, but let us go there another day).

Probably an item that should be mentioned is the metes and bounds deed description. If the deed states, "Beginning at a Point, gives bearings and distances (sides / legs) to points around the parcel perimeter and comes back to the Point of Beginning" would this not describe and satisfy the definition for a POLYGON? The answer to this is, yes, for the intent of the deed, is to describe the perimeter of a unique parcel in the real world. The bearings / distances are not absolute in direction or magnitude but a way of finding (navigating to) the corner point in the field. Therefore, "Beginning at a Point, thence to a point, thenceto a point etc. to the Point of Beginning" will form a closed polygon in the field. However, it does not mean that when one enters the deed bearings and distances into the CAD coordinate geometry program, one will obtain a perfect mathematically closed polygon.

With the recent technical advancements in the fields of Cadastral Mapping, Land Information Systems (LIS), Geographical Information Systems (GIS), etc., the POLYGON has become increasingly more important (and sometimes misunderstood). Therefore, following are a few comments about the POLYGON and spatial data in general.

Older deeds especially those with compass bearings and chain distances are viable documents and work for their intended purpose when retraced on the land. So don't necessarily blast the old surveyor because his state-of-the-art equipment (back then) doesn't meet our current Cadastral Mapping, LIS, or GIS needs. The old surveyor's POLYGON will work in the field when properly used. All too often today's modern surveyor doesn't understand this concept and that results in multiple corner markings in the field – known as pincushion corners. It is common practice for us to use the Best

Available Data in preparing parcel maps (old deed descriptions etc. fall into this category and may also be seen in recent land transfers as well).

The practice of using deeds etc. sounds good but often forces CAD mappers to make decisions in order to form a closed POLYGON when preparing parcel maps. A closed POLYGON is generally a requirement for most parcel software packages. This practice is not necessarily bad for certain applications. Just remember the POLYGON created on the computer screen may be different than it is on the ground (this is part of the problem we encounter when we do overlays on aerial photographs). Also remember when using the Best Available Data it can result in what I call BAD data (or less than desirable). Using BAD data can result in the wrong conclusion and /or a wrong decision being made. This is true with parcel POLYGON mapping over large areas such as a City or a County.

Quite possibly it is time to look at cost effective ways to improve on this practice to obtain a quality parcel POLYGON map that more closely corresponds to the real world conditions. There are currently methods available to upgrade and avoid working with BAD parcel data (maybe I can address some of these issues at another setting).

Another good thing to remember about a POLYGON: The formula for the sum of the interior angles of any polygon = $(n - 2) \times 180^\circ$ where n = the number of sides (for a triangle n would be 3, for a square or rectangle n would be 4, etc.) and the formula for the sum of the exterior angles of any polygon = $(n + 2) \times 180^\circ$. Try it: Example: a square has four sides with 90° at the four interior corners. $(n - 2) \times 180^\circ = (4 - 2) \times 180^\circ = (2) \times 180^\circ = 360^\circ$. Check $90^\circ \times 4 = 360^\circ$

Side Hint: If you do not have a degree symbol ($^\circ$) on your key board and need one - try holding down the ALT key plus 0176 on your numeric keyboard.

With improved parcel data, a better understanding of datums, map projections, using Missouri's existing geodetic control, and proper use of the Missouri State Plane Coordinate System, I can foresee that Missouri Mappers will be building excellent parcel maps that represent the real world conditions with minimal distortion. Yes, in time they will be good enough for preparing subdivisions and for land transfers. Using surface Plane Surveying Information (deeds, etc.) and superimposing this on an aerial photograph does have its limitations.

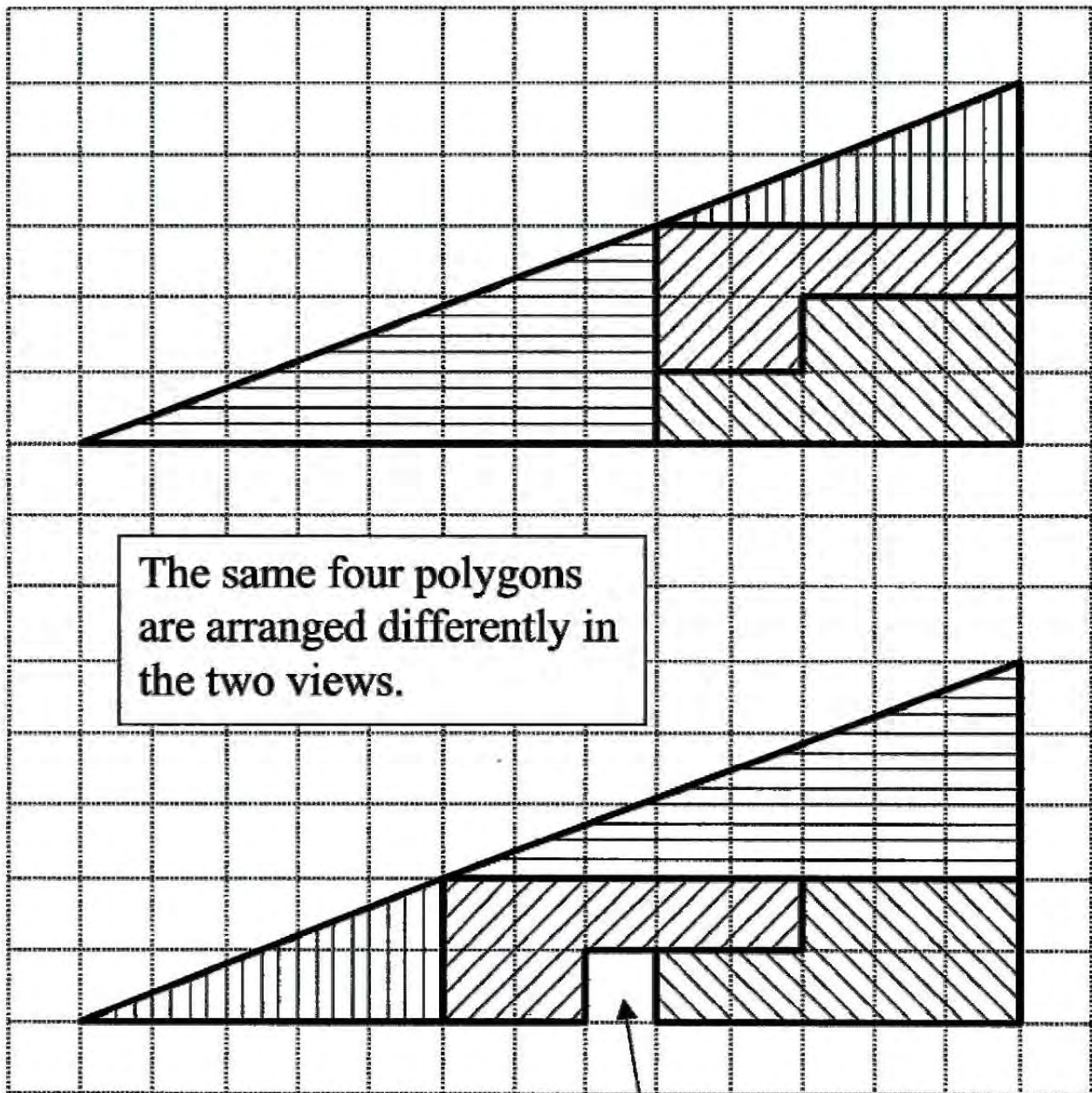
I'm going to close with a challenge. Below is a SPATIAL DATA problem. It has to do with four POLYGONS. Sometimes good data is manipulated and inadvertently errors are introduced. This problem is a good example. Have FUN with it, be careful with your assumptions, and properly apply the definition of a POLYGON to see where the "HOLE" came from.

I hope this discussion and the problem are of interest and prove to be useful.

Larry L. Bollinger, PLS
Survey Office Manager
St. Louis County, Department of Highways and Traffic

SPATIAL DATA

Can this be true? Is there an error or bad assumptions?



Where does the “Hole”
come from?

Mapping Missouri since 1954.

Over the years, we've gotten to know Missouri quite well.

Between the NAIP Program and our St. Louis Metro coverage, we've collected aerial photography for every inch of Missouri. Whether it's a county-wide or a small engineering project, call us today to see how we can serve you.



520 Spirit of St. Louis Blvd. ♦ Chesterfield, MO 63005
voice - 636-532-3427 ♦ fax - 636-537-9638 ♦ www.surdex.com

Best Start Best Finish ProMap!

In auto racing the Best Start and the Best Finish can make the difference between winning or losing. And for GIS, best starts are very critical in achieving the best finish. ProMap has the experience to give you the best start, and the commitment to ensure the best finish.



OFFICIAL GIS RESULTS

ProMap

GIS clients	over 100
WebGIS clients	over 50

BEST START! BEST FINISH!

PROMAP
GEOGRAPHIC INFORMATION SYSTEMS

1531 Airport Road, Suite 2, Ames, IA 50010-8210

Phone: 515-233-3311, www.promap.com

Publication Committee Report

Issue 4 of the 20th Annual Missouri Mappers Association Newsletter is going out October 1, 2004. We should be printing and mailing in the area of 275 newsletters that will go out to Members, Advertisers, and potential future members.

Advertising revenue for this issue is as follows:

10 advertisements.

\$579 in Advertising revenue for this issue.

\$2,148 in Advertising revenue for the year of 2004.

\$579 in committed Advertising revenue for the January 2005 issue.

\$287 in committed Advertising revenue for the April 2005 issue.

\$112 in committed Advertising revenue for the July 2005 issue.

31 volunteers for the digital version of the newsletter, which will save approximately \$30 in print/postage costs.

This is the first issue that we are running our new feature, Interviews with highly publicized people. We will do one interview every issue. Stay tuned for the next issues interview.

In today's tight budget environment, GIS decision makers are increasingly being asked to do more with less. Since its introduction in 1998, ImageAmerica's low-cost, high resolution digital ortho solution has been allowing customers nationwide to do just that. With industry leading prices, quick, guaranteed delivery times, high positional accuracy and outstanding customer service, ImageAmerica is quickly becoming the digital ortho solution of choice.



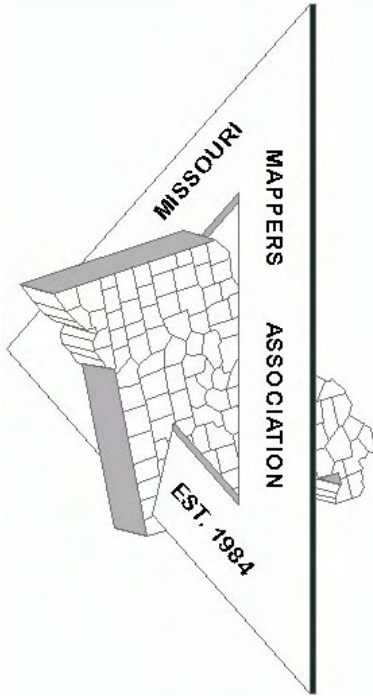
ImageAmerica®



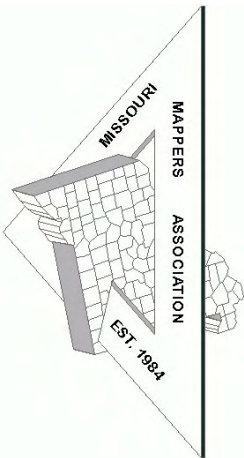
Accurate, High Resolution Digital Ortho

www.image-america.com - 800-275-0133

Missouri Mappers Association
P.O. Box 1692
JEFFERSON CITY, MO 65102



Missouri Mappers Association
P.O. Box 1692
Jefferson City, Missouri 65102



We have plenty of ad space available for the upcoming issues. Please contact Shane McDermott at shanem@psba.com for more information. Rates are as follows:

Business Card	3 Issues - \$25
1/4 Page	3 Issues - \$100
1/2 Page	\$50 per Issue
Full Page	\$100 Per Issue

Be a **Newsletter Sponsor** with a 1/4 page advertisement on the front page of one issue: \$250 Per Issue

ARTICLE AND NEWS SUBMISSIONS

Article and news submissions for topics that cover issues that are important to all of us can be sent via email or snail-mail to the following address for consideration for future publications.

Shane C. McDermott, GISP
Poepping, Stone, Bach & Associates, Inc.
100 S. 54th Street
Quincy, IL 62301
217-223-4605
shanem@psba.com