

# MISSOURI MAPPERS ASSOCIATION

VOLUME 23, ISSUE 3 JULY 2007

## LETTER FROM THE PRESIDENT, SHANE McDERMOTT

Well my first year as President of the Missouri Mappers Association has flown by. I have really enjoyed serving as President, and am looking forward to participating again in 2007-2008, although under what capacity I am not yet sure. But know that I have enjoyed the past few years, working through the ranks of the Board, up to the President.

A lot has been going on in my life this year. I recently graduated from Quincy University, in the middle of all of that I opened up Mid-West GIS, Inc., and to top it off my wife and I just had our first baby. His name is Christopher, and he is a healthy young man. So I have had a shortage of spare time lately.

There are a few things that I would really like to talk about before my term is up.

The first, and most important is the fact that our organization is run by volunteers. We rely heavily upon individuals to volunteer to serve on both the Board and Committees. I realize that it does take time and dedication in order for this organization to be successful, and we really need more people to step up and take on that responsibility.

It seems that we also have some of the same people year after year in the same roles. It would be nice to see some new faces out there getting involved with our organization. In order for us to continue to grow, we need more people to get involved in the committees.

And when you do volunteer for a committee, I would ask that you do your fair share of work, and make

sure the entire load doesn't fall in the hands of one person. It is not easy to chair some of these committees, and those chairpersons rely heavily upon the others in their group to assist them with the committees tasks.

I would also like to thank Katie Shepherd for all of her hard work on the Annual Meeting. I know that this is possibly the hardest of all of the committees to run, and Katie has done an excellent job in making last years annual meeting one of the best I have been to, and I am looking forward to seeing how this one turns out as well. Thanks Katie!

Well that is all for now. I look forward to seeing you all in a few weeks.

Shane McDermott  
President

### INSIDE THIS ISSUE:

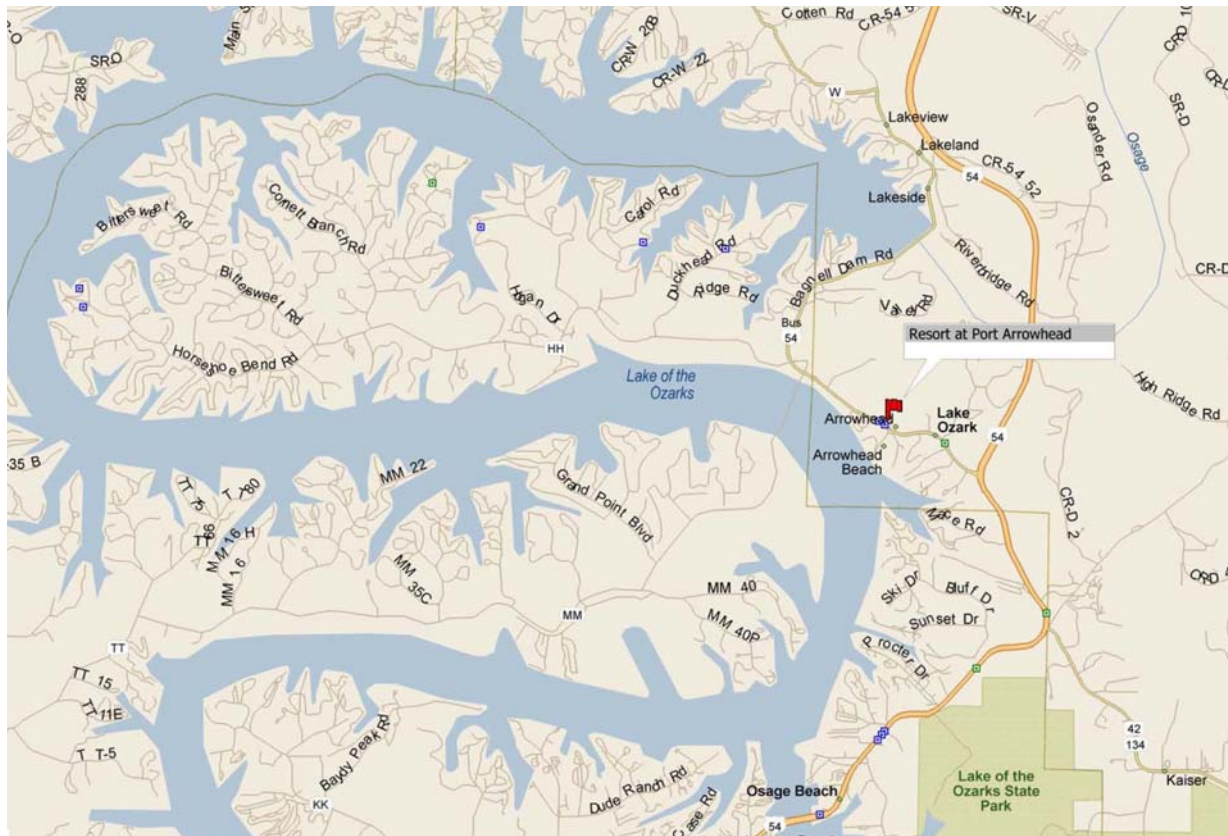
ANNUAL MEETING	3
PUBLICATION COM	5
GIS DAY	6
FACTS	7
MEMBERSHIP COMM	11
AWARDS	13

**CENTRAL EAST CHAPTER NEWS**  
**January 5, 2007**

The Central East Chapter of MMA met on Tuesday, November 7, 2006. We toured Sanborn, a Photogrammetric Mapping Service Company located in Chesterfield Missouri. We were given an explanation of the entire aerial photography process. After the tour we had a brief business meeting followed by a lunch that was catered by Alice Lee and Belinka Novotny-Held.

We will meet this spring for our annual picnic in Jefferson County. Our guest speaker, a local real estate attorney, will discuss “land sale” procedures.

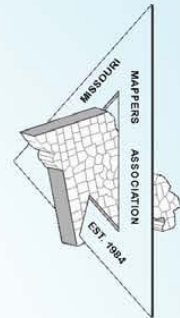
If you would like to be included in our chapter mailing list please, send your name, address, phone, and e-mail address to [bh@jcao.org](mailto:bh@jcao.org).



# 2007 Missouri Mappers Association 23rd Annual Conference



July 31st - August 3rd, 2007  
The Resort at Port Arrowhead  
Lake Ozark, MO



## Mapping Is A Treasure!

Workshops and Sessions at This Year's Conference Will Include:

- Lanny Schnipper & Steve Tomps, Seiler Instrument - Workshop "Mobile GIS: Using GPS for GIS Data Collection and Maintenance"
- Katie Harris, ESRI - Workshop "Geodatabase Basics for ArcGIS 9.2"
- Jennifer Kuchar, The Sidwell Company - Workshop "The Dos and Don'ts for Building a GIS"
- Mark Duewell, Missouri Spatial Data Information Service, "What's In It For ME!"
- Donald Martin, PLS, Missouri Department of Conservation
- Matt Sorensen, Midland GIS Solutions, "Put Your GIS Data to Work"
- Randall Mayden, M.J. Harden Associates and Bruce Hardesty, R&S Digital Services, "Where Are The Maps?"
- Joseph Cochran, Miller County, Missouri, "Working Together: WebGIS and County Government"
- Scott Faust, Pictometry International, "Oblique Imagery in GIS, Appraisal, and the 911 Setting"

### Social Events for Everyone!

Tuesday, July 31

Welcome Barbecue



Wednesday, August 1

Annual Golf Tournament  
Vendor Reception  
Bowling Event

Thursday, August 2

Annual Conference Dinner  
Game Show Night



See You at the Lake Mates!

For more information, please contact Katie Shepherd at [shepherd@midlandgis.com](mailto:shepherd@midlandgis.com) or call 660-562-0050.



Left to Right - Alex Wieser, Mike Ohnemus,  
Joe Darnell, Shane McDermott

Mid-West GIS, Inc. has opened a new office in Quincy, Illinois. Offering a full range of GIS services. Our goal is to provide Quality GIS Services at an affordable price to clients in the Mid-West

For more information on our Products & Services, please contact us at the number below.

**Utility**

water, sewer, electrical, gas, and other related utilities

**Transportation**

road centerlines, bridge & culvert inventory, road surface inventory, sign inventory

**Planning and Zoning**

Zoning, Building Permit, Comprehensive Plan, and other related applications

**911 and Addressing**

911 addressing and dispatch applications

**Land Base**

Parcel. Soil, and Land Use

**Emergency Response Networks**

Police Incident Locations, Building Plans for Public Buildings, Flood & Emergency Management Plans

**Customer Location**

Commercial customer tracking and analyzing applications

**Routing**

Vehicle routing applications

**ArcIMS**

Website based GIS development

**Mid-West GIS, Inc.**  
510 Maine St.  
Suite 510  
Quincy, IL 62301

**Web - [www.mid-westgis.com](http://www.mid-westgis.com)**  
**Phone - (217) 222-7793**  
**Fax - (217) 222-7794**  
**Email - [shane@mid-westgis.com](mailto:shane@mid-westgis.com)**

### **Publication Committee Report**

This issue will be mailed out to approximately 305 members and vendors. It will also be posted on our website, along with newsletters from the past.

Advertising Revenue for the July issue is \$582, but I still have a few that may place an ad at the last moment.

If you would like to submit stories, pictures, information or anything else related to mapping or GIS please send them to Shane McDermott at [shane@mid-westgis.com](mailto:shane@mid-westgis.com) or mail them to:

Shane McDermott, GISP

President

Mid-West GIS, Inc.

510 Maine St, Suite 510

Quincy, IL 62301

# **KUCERA INTERNATIONAL INC.**

**Providing high quality, cost-effective aerial mapping services to Missouri counties and cities.**

Aerial Photography

Ground and Airborne GPS/IMU

LIDAR

Digital Terrain/Elevation Models

Digital Orthophotography

Digital Planimetry/Topography

Cadastral Mapping

Data Conversion

ORTHOCAPE® 3D GIS



**Kucera International Inc. is a leading provider of aerial mapping and related geomatic services with over 50 years of experience and production offices located throughout the United States.**

**Kucera customers are served by a skilled staff of experienced professionals, including licensed/certified photogrammetrists, mappers, surveyors, geodesists, engineers, planners, and computer/GIS technicians. Our team works closely and cooperatively with each client to achieve optimal results and ensure time and cost efficiency.**



#### **Kucera Midwest**

113 Birchwood Drive, Ballwin, MO 63011

Tel (636) 527-6206, Fax (636) 527-6209

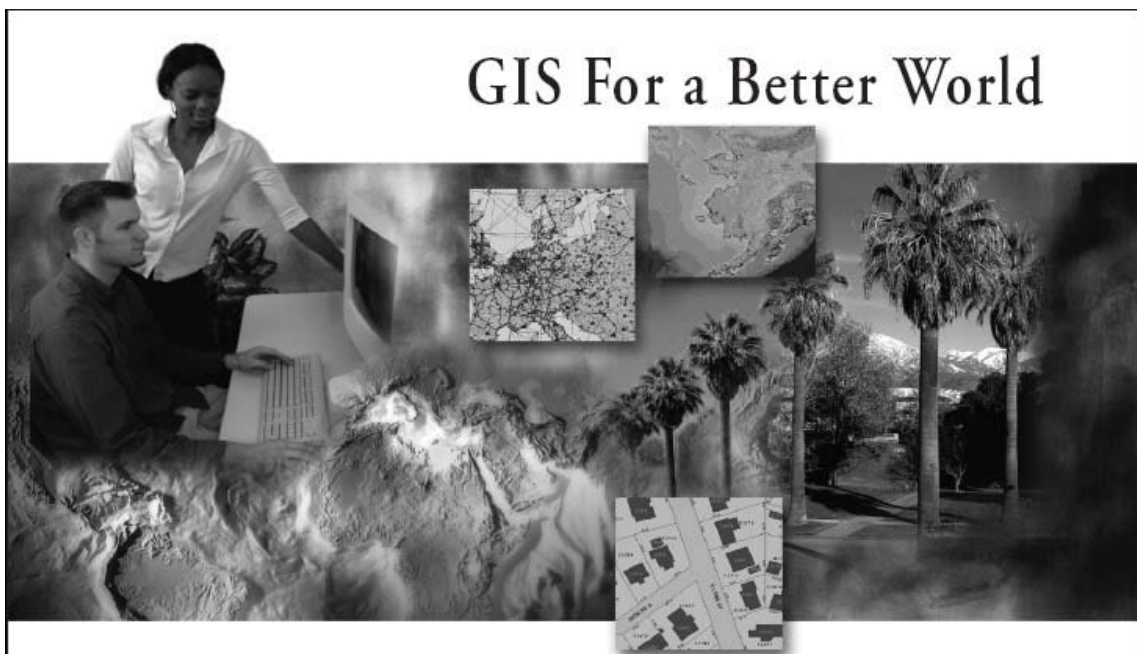
[k.swisher@kucerainternational.com](mailto:k.swisher@kucerainternational.com), [www.kucerainternational.com](http://www.kucerainternational.com)



# GIS DAY 2007!

November 14<sup>th</sup>

Here is a chance to expand your knowledge and reach out to others of all ages to inform them of all the great things GIS does for us. November 14<sup>th</sup> is the official day of GIS and what a great way to have a day set aside, especially for kids, to start early and have fun learning through interactive experiences what GIS is all about. You can do this for a few employees or co-workers, a school in town, or even a city-wide presentation. To get your GIS day going you can register the event at [www.gisday.com](http://www.gisday.com), where they will then allow for the public to see this event and then you can send emails to whomever you are inviting to your event. There are many great ideas to help get you started also on this website. It shows you anywhere from t-shirts made, to materials you can use that would be suitable for the event, and also they have special ideas if you have a certain age of child you are holding this event for. Look at the success stories on this website and see all the positive responses and all the people that were reached by participants of GIS Day and realize the impact you could make!



## GIS For a Better World

ESRI has been the world leader in geographic information system (GIS) software for over 30 years. ESRI offers innovative solutions that will help you create, visualize, analyze, and present information better and more clearly. Organizations around the world, as well as local, state, and federal government agencies, use ESRI GIS software to make smart and timely decisions. ESRI offers GIS solutions to help you unlock the spatial component of your valuable data.



**Find out how GIS can help your organization.**  
[www.esri.com](http://www.esri.com) • 1-800-447-9778 • [info@esri.com](mailto:info@esri.com)

## Facts about the Mid-West

The Midwestern United States (or Midwest) refers to the north-central states of the United States of America. Both the geographic center of the contiguous U.S. and the population center of the U.S. are in the Midwest (in Kansas and Missouri respectively). The United States Census Bureau divides this region into the East North Central States (essentially the Great Lakes States); and the West North Central States (essentially the Great Plains States), which generally include Iowa, Kansas, Minnesota, Missouri, Nebraska, North Dakota, and South Dakota.

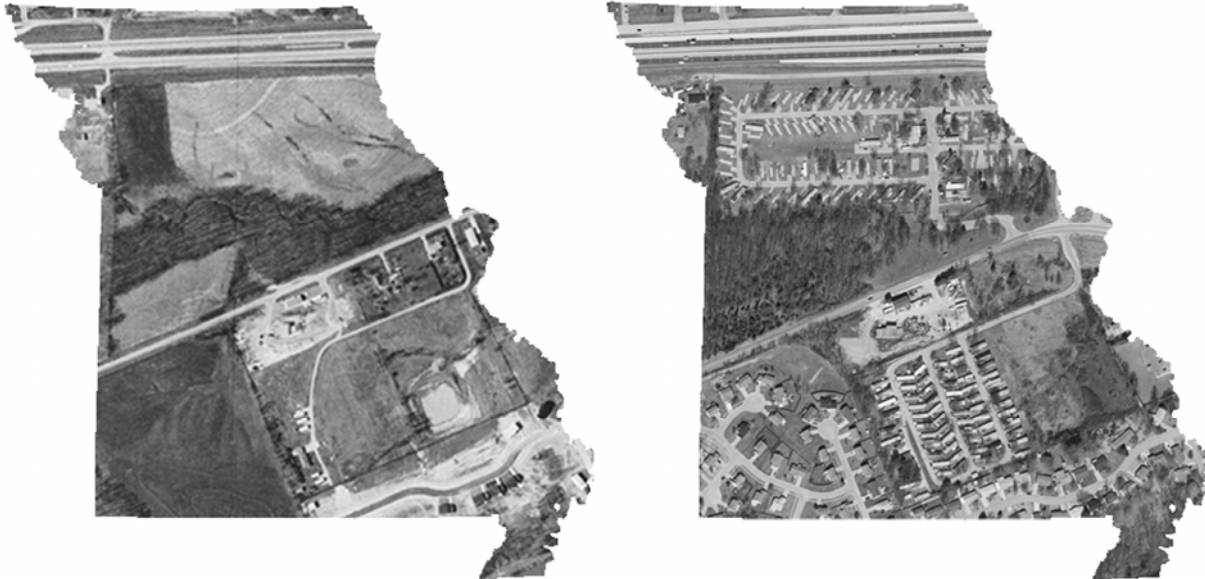
In the early 19th Century, anything west of the Mississippi River was considered the West, and the Midwest was the region west of the Appalachians and east of the Mississippi. In time, some users began to include Minnesota, Iowa and Missouri, and with the settlement of the western prairie, a new term, "Great Plains States," was used for the row of states from North Dakota to Kansas. Later, these states annexed themselves unofficially to the Midwest.

The region was shaped by the relative absence of slavery (except for Missouri), pioneer settlement, education in one-room free public schools, and democratic notions brought with American Revolutionary War veterans, Protestant faiths and experimentation, and agricultural wealth transported on the Ohio River riverboats, flatboats, canal boats, and railroads. The canals in Ohio and Indiana opened so much of Midwestern agriculture that it launched the world's greatest population and economic boom foreshadowing later "emerging markets". The commodities that the Midwest funneled into the Erie Canal down the Ohio River contributed to the wealth of New York City, which overtook Boston and Philadelphia. New York State would proudly boast of the Midwest as its "inland empire"; thus, New York would become known as the Empire State.

These states are generally perceived as being relatively flat. That is true of several areas, but there is a measure of geographical variation. Rainfall decreases from east to west, resulting in different types of prairies, with the tall grass prairie in the wetter eastern region, mixed-grass prairie in the central Great Plains, and short grass prairie towards the rain shadow of the Rockies. Today, these three prairie types largely correspond to the corn/soybean area, the wheat belt, and the western rangelands, respectively. Hardwood forests in this area were logged to extinction in the late 1800s. The majority of the Midwest can now be categorized as urbanized areas or pastoral agricultural areas.

## Do You Remember What Missouri Looked Like 50 Years Ago?

We do, and we have the pictures to prove it. For over 50 years, Surdex has been mapping Missouri. We've photographed every inch of this great state many times. So if you are looking for a complete county-wide project, or a small site for development, Surdex has it covered!



Digital Plan / Topo Mapping  
Digital Orthophotography  
GPS Control Surveys  
Aerial Photography  
GIS Services  
LIDAR

Contact us at: 636-532-3427  
520 Spirit of St. Louis Blvd., Chesterfield, MO 63005 [www.surdex.com](http://www.surdex.com)





# *MJ Harden Is Now A GeoEye Company*

*A brilliant combination of industry leaders  
gives you a powerful new geospatial resource.*

From vivid, multi-spectral aerial imagery to robust GIS implementations, MJ Harden offers a full range of advanced mapping and geospatial data management options.

- *Digital Aerial Imaging*
- *Planimetric and Topographic Mapping*
- *Digital Orthophoto Imagery*
- *LiDAR Data Capture*
- *Satellite Imagery*
- *Remote Sensing*
- *Field Data Management*
- *Corridor Management*
- *GIS Consulting, Development and Implementation*

**MJ Harden**<sup>™</sup>  
A  GeoEye Company

5700 Broadmoor Street, Suite 800  
Mission, Kansas 66202  
913.981.9600 phone  
913.981.9602 fax

**PHOTOGRAMMETRY SERVICES**

US East - Rodney Cope 434.589.6860

US Central - Randy Mayden 913.981.9515

US West - Danny Ross 719.481.5793

**GIS IMPLEMENTATION SERVICES**

Jayson Troughton 636.357.3140

Mike Kallas 913.981.9525



*Since 1945*

**Your One Stop Source for all your  
GPS, Mapping, and Surveying Needs.**

**ST. LOUIS**

36 Kirkham Industrial  
St. Louis, MO 63119  
(800) 489-2282  
(314) 968-2282

**KANSAS CITY**

918 N. Scott Avenue  
Belton, MO 64012  
(800) 489-3383  
(816) 331-3383

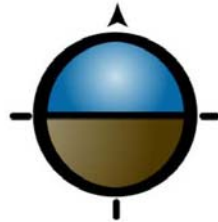


Sales • Service • Repairs • Rentals • Training • Financing

## Membership Report

Please check your mailing label on your newsletter to see if you are paid up and if not, please consider renewing your membership to stay current with all the news. Thank you.

Respectfully submitted,  
Gladys Smith  
Membership Chairperson



**GRE**  
GREAT RIVER  
ENGINEERING



- Full GIS Implementation
- Data Creation, Conversion, & Manipulation
- E911 Address Creation & Standardization
- Utility Mapping
- Land Use & Parcel Mapping
- Aerial Photo Flight Coordination
- Custom Applications, Maps, & Reports
- Professional Land Surveying
- Civil Engineering

2826 S. Ingram Mill Rd  
Springfield, MO 65804  
[www.greatrivereng.com](http://www.greatrivereng.com)  
Phone: 417-886-7171 Fax: 417-886-7591



# Midland GIS Solutions

*Your Professional GIS Services Provider.*



- GIS Development
- GIS Project Consulting
- Web GIS Service and Support
- Parcel Data Conversion
- Technical Support
- Needs Assessments
- Geodatabase Design
- GPS Services



***“GIS Specialists working with local surveyors to implement County and Municipal GIS programs.”***

***Contact us for details on project partnering.***



- County Government
- Municipal Government
- Utility Companies
- Private Business
- Regional Associations
- Institutions
- Transportation
- Homeland Security



***Owned and Operated by Professional Land Surveyors***

501 N Market  
Maryville, MO 64468  
(660) 562-0050  
www.midlandgis.com

152 Greystone Lane  
Sunrise Beach, MO 65079  
(573) 374-0885  
info@midlandgis.com

Toll Free: 877-375-8633



---

**AWARDS COMMITTEE REPORT**  
**07-12-2007**

Please help the awards committee honor members who have done an outstanding job this year by submitting your ideas or suggestions. If you would like an award created to honor an MMA member contact the awards committee by submitting your ideas or nominations to [bh@jcao.org](mailto:bh@jcao.org) or by calling 636-797-5467.

Respectfully submitted,  
Belinka Novotny-Held  
Awards Committee

---

## **Aerial Services, Inc.**

*Professional Geospatial Provider Since 1967*

- *Aerial Photography (Digital & Conventional)*
- *Photogrammetry*
- *Orthophotography*
- *LiDAR Surveys*
- *Topographic & Planimetric Mapping*
- *GIS Solutions*

**Cedar Falls, Iowa**

**877-ASI-4GIS**

**[www.aerialservicesinc.com](http://www.aerialservicesinc.com)**



# GIS Solutions that Balance Experience and Imagination




## Industry leading know-how and technology

*A leader in providing GIS solutions to municipal, county, and state government. With the successful implementation of over 150 projects, and the development and hosting of over 70 ArcIMS based websites, The Schneider Corporation represents the cutting-edge of GIS and data warehousing technology. Contact us to put our experience to work for you.*

- land records management
- public safety
- public works
- product development
- website development/hosting



[www.schneidercorp.com](http://www.schneidercorp.com)  
866.973.7100



# Beware of the “quick fix” GIS solution.

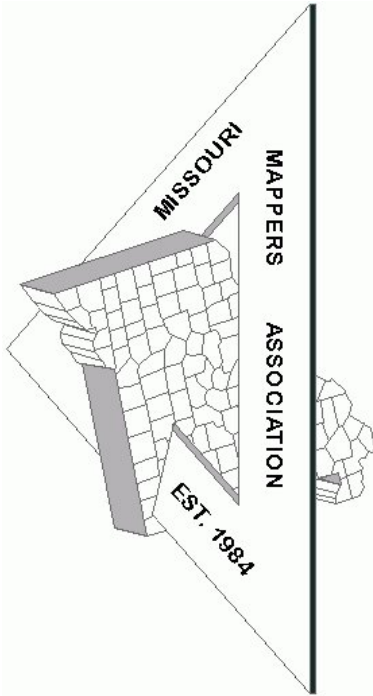
Too many GIS providers are focused on a “quick fix” GIS solution - one that leaves you with a minimal project for maximum cost. What makes Sidwell different? Our team of GIS professionals always takes the time to:

- *Listen first*
- *Identify your crucial needs*
- *Recommend logical & cost-effective solutions*
- *Support your project efforts*

Experience the Sidwell difference. Contact us *today*.



**Missouri Mappers Association**  
**P.O. Box 1692**  
**JEFFERSON CITY, MO 65102**



We have plenty of ad space available for the upcoming issues. Please contact Shane McDermott at [shane@mid-westgis.com](mailto:shane@mid-westgis.com) for more information. Rates are as follows:

<b>Business Card</b>	3 Issues - \$25
<b>1/4 Page</b>	3 Issues - \$100
<b>1/2 Page</b>	\$50 per Issue
<b>Full Page</b>	\$100 Per Issue

Be a **Newsletter Sponsor** with a 1/4 page advertisement on the front page of one issue: \$250 Per Issue

#### ARTICLE AND NEWS SUBMISSIONS

Article and news submissions for topics that cover issues that are important to all of us can be sent via email or snail-mail to the following address for consideration for future publications.

Shane C. McDermott, GISP  
Mid-West GIS, Inc.  
510 Maine St. Suite 510  
Quincy, IL 62301  
[shane@mid-westgis.com](mailto:shane@mid-westgis.com)  
[www.mid-westgis.com](http://www.mid-westgis.com)

Missouri Mappers Association  
P.O. Box 1692  
Jefferson City, Missouri 65102

