

MISSOURI MAPPERS ASSOCIATION

VOLUME 22, ISSUE 3

JULY 2006

LETTER FROM THE PRESIDENT, RANDY LEWIS

Right when you thought you heard the last of my letters, I appear again.

Final plans for the conference are just about done; the Annual meeting committee has done an outstanding job this year. Please do not forget to make reservations at the resort, the longer you wait the further away from the meeting rooms you will be. The bar-b-que is still going to happen on Monday night in the suite next to the pool. Classes on Tuesday, speakers on Wednesday, Business meeting on Thursday. All we need

from you is your registration sent to Katie, and you will be set to go to the conference.

I hope everyone is enjoying there summer vacation, county fairs etc. the weather has been nice thru out the state. I know a few storms here and there, but that's Mother Nature and she will keep us in line! I guess you figured a long letter, but I am on vacation as I type, and you will hear enough of me at the conference. Please send your registration into Katie as soon as you can, and if you

can not make the bar-b-que, please accept committee nominations from me! Note: Assessors and tax commission employees are not exempt from committee appointments. So I hope to see all of you at the conference, and have a very safe trip to the conference.

Just in case you have lost this web page, here it is again www.mdc.mo.gov for all of your freezer filling needs!!

Randy Lewis
President

INSIDE THIS ISSUE:

ANNUAL MEETING	2-6
PUBLICATION COM	9
TREASURER	13
MAMBERSHIP	15
AWARDS	17
HISTORICAL	17

**Join us at the
Lake for the annual
meeting of the MMA
August 7-10**

WANTED

DEFLATED OR ALIVE

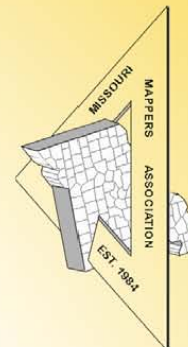


**INFAMOUS BANANA RUSTLER AND BAD DANCER
SHOULD BE CONSIDERED ARMED AND DANGEROUS
LAST SPOTTED AT MMA CONFERENCE**

2006 Missouri Mappers Association 22nd Annual Conference



August 7-10, 2006
Lake of the Ozarks, MO
The Resort at Port Arrowhead



RODEO MAPPING!

Topics This Year Will Include:

- Mark Kemper, The Sidwell Company, "Workshop: Lines, Tangents and Bearings...Oh My!"
- Anne Ewing, ESRI, "Workshop: Geodatabase Basics"
- Larry Bollinger, St. Louis County Highway Department, "Workshop: Cadastral Mapping for Today's World"
- Larry Kroupa, Kara MidAmerica, "Pros and Cons of High Accuracy GIS Data Collection"
- Matt Sorensen, Midland GIS Solutions, "Utilizing Missouri State Tax Commission Guidelines for County GIS Development"
- Mike Flowers, PLS, State Land Surveyor, "US Public Land Survey System"
- Sarah Murray, Schneider Corporation, "Public Access to GIS Data"
- Mark Allen, City of Higginsville, "Utility Mapping"
- Brian Baker, The Sidwell Company, "Guidelines for Drafting a Digital Orthophotography RFP"

Social Events for Everyone!

Monday, August 7
Poolside Barbecue



Tuesday, August 8
Annual Golf Tournament
Pistol Shoot
Vendor Reception
Putt-Putt- Golf Tournament

Wednesday, August 9
Annual Conference Dinner
Casino Night



See Y'all At the Lake!

For more info, please contact Katie Shepherd at shepherd@midlandgis.com or 660-562-0500

Conference at a Glance

Monday, August 7, 2006

6:30 P.M. – Dusk

Barbecue at the Resort at Port Arrowhead – Poolside

Tuesday, August 8, 2006

8:30 A.M. – 11:30 A.M.

“Lines, Tangents & Bearings...Oh My!: Understanding Legal Descriptions” Workshop, Room D
Mark Kemper, The Sidwell Company
(Pre-registration and separate fee required)
Equipment and Manuals Will Be Supplied
Registrants Must Bring Calculators
No Requirements

8:30 A.M. – 3:30 P.M.

“Geodatabase Basics”
Workshop, Room A
Anne Ewing, ESRI
(Pre-registration and separate fee required)
Lunch Break Will Be Provided
Basic ArcGIS Skills Preferred

10:00 A.M. – TBD

Golf Tournament, Bear Creek Valley
(Pre-registration and separate fee required)

1:00 P.M. – 4:00 P.M.

“Cadastral Mapping for Today’s World”
Workshop, Room D
Larry Bollinger, St. Louis County Highway Department
(Pre-registration and separate fee required)
Registrants Must Bring Pencil, Straight Edge, 6 Sheets of Plain White Paper (8 ½ x 11) and Calculator
No Requirements

3:00 P.M. – 5:45 P.M.

Vendor Set Up – Exhibit Hall (Lakeside North and Center)

4:30 P.M. – 5:30 P.M.

Pistol Shoot (Pistols Plus Shooting Range)

5:00 P.M. – 6:00 P.M.

Registration (Lakeside Foyer)

6:00 P.M.

Exhibit Hall Opens (Lakeside North and Center)

6:00 P.M. – 7:30 P.M.

Vendor Reception (Lakeside North and Center)

7:45 P.M.

Meeting Time for Putt-Putt Golf Tournament (18-hole Miniature Golf Course at the Resort)

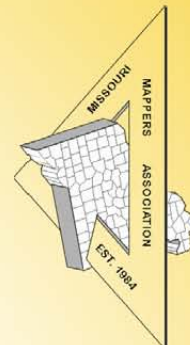
8:00 P.M. – TBD

Putt-Putt Golf Tournament

Wednesday, August 9, 2006

7:30 A.M. – 9:00 A.M.

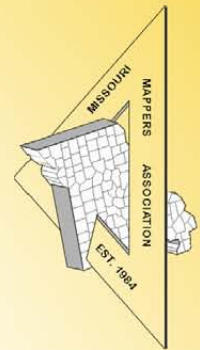
Main registration (Lakeside Foyer)



8:00 A.M. – 9:00 A.M.	Continental Breakfast – Lakeside North and Center
9:00 A.M. – 9:10 A.M.	President's Introduction – Lakeside South
9:10 A.M. – 9:50 A.M.	Keynote Speaker – Lakeside South
10:00 A.M. – 10:30 A.M.	"Guidelines for Drafting a Digital Orthophotography RFP" Brian Baker, GIS Account Manager, The Sidwell Company Lakeside South
10:30 A.M. – 10:50 A.M.	Morning Break with Vendors Lakeside North and Center
10:50 A.M. – 11:20 A.M.	"Utilizing Missouri State Tax Commission Mapping Guidelines for County GIS Development" Matt Sorensen, Vice President, Midland GIS Solutions Lakeside South
11:40 A.M. – 12:10 P.M.	"US Public Land Survey System" Mike Flowers, PLS State Land Surveyor, Department of Natural Resources Lakeside South
12:10 P.M. – 1:30 P.M.	Lunch – Lakeside North and Center
1:30 P.M. – 2:00 P.M.	"Public Access to GIS Data" Sarah Murray, Schneider Corporation – Lakeside South
2:00 P.M. – 2:20 P.M.	Afternoon Break with Vendors Lakeside North and Center
2:20 P.M. – 2:50 P.M.	"Pros & Cons of High Accuracy GIS Data Collection" Larry Kroupa, GPS/TPS Technical Sales, Kara MidAmerica, Inc. – Lakeside South
3:00 P.M. – 3:30 P.M.	"Utility Mapping" Mark Allen, GIS/Data Controller, City of Higginsville – Lakeside South
3:30 P.M. – 4:00 P.M.	Chapter meetings; PMM Meeting
6:00 P.M. – 7:15 P.M.	Dinner – Lakeside North and Central
7:30 P.M. – 10:00 P.M.	Casino Night – Lakeside South

Thursday, August 10, 2006

8:00 A.M. – 9:00 A.M.	Breakfast – Lakeside North and Central
9:00 A.M.	Business Meeting – Lakeside North and Center Presentation and Awards Prize Drawing – Attendance Required Swearing in of New Officers Appointment of New Committee Chairs Closing Remarks



**Missouri Mappers Association
Annual Golf Tournament**

**Bear Creek Valley
Tuesday, August 8, 2006
10:00 AM (Shotgun Start)**

Registration Form

If you do not have a team just list your name and we will pair you with one.

Player: _____
Player: _____
Player: _____
Player: _____

The cost is \$53.00 per person which includes green fees, carts and range balls. Prizes will be awarded during Tuesday evening's social events. Prizes will be given for team scores, putting contest, closest to the hole and longest drive.

This course is very challenging so bring lots of golf balls, but we will have a great time on a beautiful course. Get your teams together and send in your registration today!

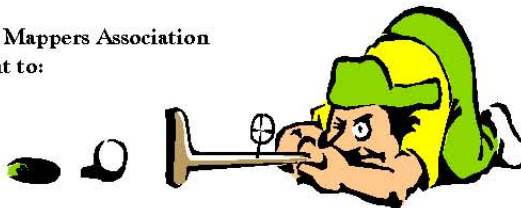
We are looking for donated door prizes again this year. If you are willing to provide a prize, please contact Jim Kyle at 417-357-0363 or e-mail doewiggle67@wmconnect.com. The Wal-Mart gift certificates worked great last year.

Alcohol is allowed on the course but must be purchased from the pro shop. No coolers allowed. Due to the cost of the tournament, lunch will be on your own.

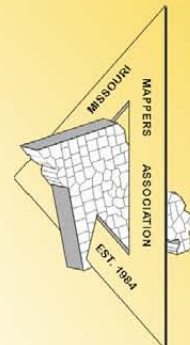
Directions to golf course: From the Resort at Port Arrowhead, turn right out of the parking lot back to Hwy 54. Turn right on Hwy 54 towards town and go to the first stop light. Here, turn left on Hwy 42. Go a quarter of a mile, and the course is on your left.

**Please make checks payable to Missouri Mappers Association
Send golf registration form and payment to:**

**Jim Kyle
MMA Golf Tournament
26302 St. Hwy 413
Galena, MO**



If you have any questions, please call Jim Kyle at 417-357-0363 (office) or 417-294-2621 (cell)



Cost effective GIS solutions!

Why pay ridiculously inflated prices when you can get the same high quality services at a fraction of the cost from a locally owned company? Visit www.psba.com for more information.

Poepping, Stone, Bach & Associates, Inc. **Architecture, Engineering, GIS Services, Planning & Surveying**

Parcel Mapping



Utility Mapping



www.psba.com

ArcIMS Web Development



Land Use Development



Quincy Office
 100 S 54th St.
 Quincy, IL 62306
 Phone 217/223-4605
 Toll Free 877/423-4605
 Fax 217/223-1546

Hannibal Office
 U.S. Federal Building
 801 Broadway, Suite 224
 Hannibal, MO 63401
 Phone 573-406-0541
 Fax 573-406-0390

Keokuk Office
 3523 Main St.
 Keokuk, IA 52632
 Phone 319/524-8730
 Toll Free 800/249-5869
 Fax 319/524-7720

email - shanem@psba.com
web- www.psba.com

When it comes to your GIS, don't settle for second best:

get the
mapping expertise you need and
the **GIS technology** you want,
all rolled into one - ***with Sidwell!***

It seems like a lot of consultants these days are willing to make a lot of claims. "We're the most cost effective solution!" "We can build a GIS just like Sidwell's!" When it comes to your GIS, you need a company that has the experience and integrity to deliver as promised. **Sidwell is that company!** Only Sidwell can give you the key elements needed for a successful GIS: a depth of mapping experience combined with a dedication to technology that is second to none. Our history of mapping and land records expertise is unparalleled, and we continue to set standards in the GIS industry for client service and technology innovations like our Parcel Builder™ software.

For more information on how you can benefit from our unique blend of cadastral mapping expertise and GIS technology, contact us today!

MISSOURI OFFICE
365 Balmoral Castle Drive
Wentzville, MO 63385
636-327-5937
bbaker@sidwellco.com



MAIN OFFICE
675 Sidwell Court
St. Charles, IL 60174
630.549.1000
www.sidwellco.com

Publication Committee Report

This issue will be mailed out to approximately 250 members and vendors. It will also be posted on our new website, along with newsletters from the past.

Advertising Revenue for the July issue is \$647. Total Advertising Revenue to date for 2006 is \$1,235.

The Publication Committee will be looking for individuals to volunteer some of their time next year. If you are interested please email Shane McDermott at shanem@psba.com. We will be looking for people to assist in the development of the newsletter as well as a possible chairman for the committee. It is always good to have new people and new ideas in a committee like this.

If you would like to submit stories, pictures, information or anything else related to mapping or GIS please send them to Shane McDermott at shanem@psba.com or mail them to:

Shane McDermott, GISP

Poepping, Stone, Bach & Associates, Inc.

100 S. 54th St.

Quincy, IL 62305

KUCERA INTERNATIONAL INC.

Providing high quality, cost-effective aerial mapping services to Missouri counties and cities.

Aerial Photography

Ground and Airborne GPS/IMU

LIDAR

Digital Terrain/Elevation Models

Digital Orthophotography

Digital Planimetry/Topography

Cadastral Mapping

Data Conversion

ORTHOSCAPE® 3D GIS



Kucera International Inc. is a leading provider of aerial mapping and related geomatic services with over 50 years of experience and production offices located throughout the United States.

Kucera customers are served by a skilled staff of experienced professionals, including licensed/certified photogrammetrists, mappers, surveyors, geodesists, engineers, planners, and computer/GIS technicians. Our team works closely and cooperatively with each client to achieve optimal results and ensure time and cost efficiency.



Kucera Midwest

113 Birchwood Drive, Ballwin, MO 63011

Tel (636) 527-6206, Fax (636) 527-6209

k.swisher@kucerainternational.com, www.kucerainternational.com

Midland GIS Solutions

Your Professional GIS Services Provider.



- GIS Development
- GIS Project Consulting
- Web GIS Service and Support
- Parcel Data Conversion
- Technical Support
- Needs Assessments
- Geodatabase Design
- GPS Services



"GIS Specialists working with local surveyors to implement County and Municipal GIS programs."

Contact us for details on project partnering.



- County Government
- Municipal Government
- Utility Companies
- Private Business
- Regional Associations
- Institutions
- Transportation
- Homeland Security



Owned and Operated by Professional Land Surveyors

501 N Market
Maryville, MO 64468
(660) 562-0050
www.midlandgis.com

152 Greystone Lane
Sunrise Beach, MO 65079
(573) 374-0885
info@midlandgis.com

Toll Free: 877-375-8633



Aerial Services, Inc.

Mapping Your World® since 1967



Geospatial Services Including:

- GIS Solutions
- Aerial Photography
- LIDAR
- County-wide Digital Orthos
- GPS Surveys-Ground & Airborne
- DEM/DTM Topographic Mapping
- Analytical Aerotriangulation
- Precision Scanning
- Data Conversion

Cedar Falls, Iowa

Toll Free: 877-ASI-4GIS

www.AerialServicesInc.com



ESRI
Technology
AUTHORIZED
INSTRUCTOR



Environmental Services, LLC

Complete GIS Solutionssm

* Software *

* Hardware *

* Training & Support *

LIZARDTECH™
a celartem Company



Arc
ESRI **GIS™**



RICOH

LASERCRAFT

GeoSpatial
EXPERTS

THALES

P.O. Box 638

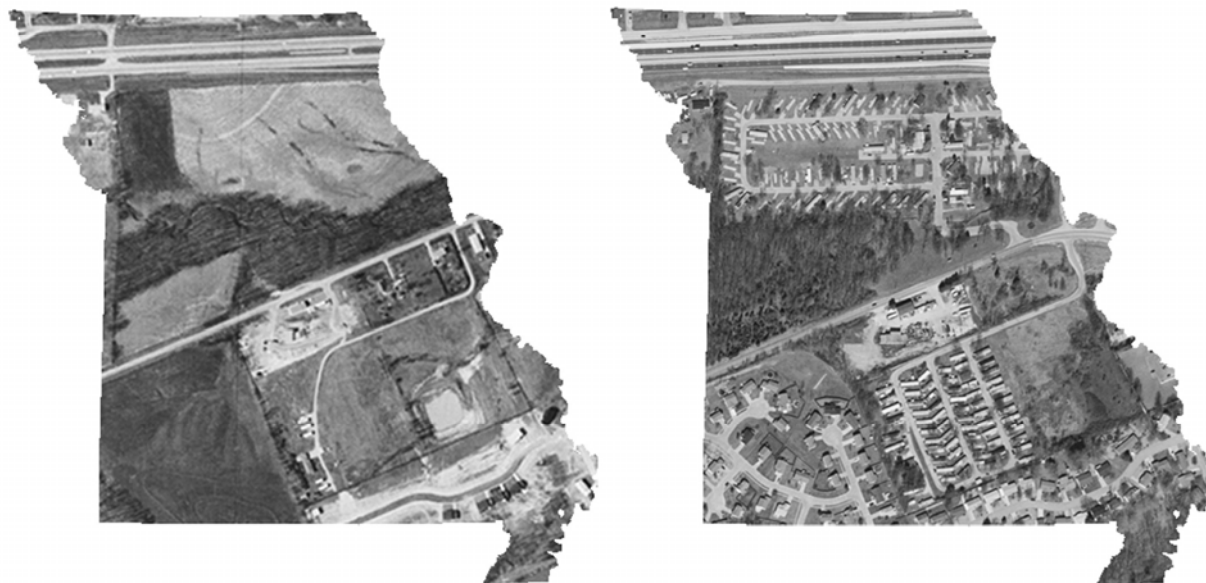
Bonne Terre, MO 63628

Phone: 573-358-2522 Fax: 573-358-5770

Web: www.windenvironmental.com Email: info@windenvironmental.com

Do You Remember What Missouri Looked Like 50 Years Ago?

We do, and we have the pictures to prove it. For over 50 years, Surdex has been mapping Missouri. We've photographed every inch of this great state many times. So if you are looking for a complete county-wide project, or a small site for development, Surdex has it covered!



**Digital Plan / Topo Mapping
Digital Orthophotography
GPS Control Surveys
Aerial Photography
GIS Services
LIDAR**

Contact us at: 636-532-3427
520 Spirit of St. Louis Blvd., Chesterfield, MO 63005 www.surdex.com

Treasurers Report

June 19, 2006

Beginning Balance 04/01/2006 \$13,340.47

Receipts

Dues	\$495.00	
Conference	\$1,845.00	
Education	\$250.00	
Golf Tournament	\$53.00	
Advertising	\$600.00	
West Central	\$5.00	
Voided Checks previously recorded	\$40.00	
Interest Earned	\$4.57	
Total Receipts	\$3,292.57	
Beginning Balance + Receipts		\$16,633.04

Disbursements

Regions Bank, Monthly Service Fee—March	\$11.08
Regions Bank, Monthly Service Fee—April	\$10.48
Regions Bank, Monthly Service Fee—May	\$10.64
Postmaster—yearly box rental	\$72.00
Katie Shepherd—conference expenses	\$188.58
Ryon Gross—web design	\$500.00
Belinka Novotny-Held—door prizes	\$300.00
Midland GIS Solutions—Postage for conf. prog.	\$9.45
CHANGED BANKS FROM REGIONS TO US BANK	
US Bank—checks & cover	\$71.95
Greene County—dues overpayment	\$5.00
Warren County—dues overpayment	\$15.00
Grundy County—conference refund	\$130.00
Cass County—dues overpayment	\$45.00
Ryon Gross—website maintenance	\$400.00
Katie Shepherd—Conference expenses	\$42.97
Kay Schenewark - mileage to board mtg.	\$139.44
Randy Lewis—mileage to board mtg.	\$108.36
Kim Swisher—mileage to board mtg.	\$100.80
Darrel King—mileage to board mtg.	\$67.20
Judy Logan—mileage to board mtg.	\$22.68
Postmaster—stamps	\$7.80
Total Disbursements	\$2,258.43

Balance May 31, 2006 \$14,374.61



Your **COMPLETE** Source for Mapping/GIS



GeoXT Handheld

THE TOTAL GPS PLATFORM FOR ALL YOUR GIS FIELD REQUIREMENTS

The GeoXT™ handheld, from Trimble's GeoExplorer® series, is the essential tool for maintaining your GIS. A high performance, submeter GPS receiver combined with a rugged handheld computer, the GeoXT handheld is ideal for use by utility companies, local government organizations, federal agencies, or anyone managing assets or mapping critical infrastructure who needs accurate data to do the job right—the first time.

Pathfinder Pro Series

HIGH PERFORMANCE INTEGRATED GPS RECEIVER FOR SUBFOOT ACCURACY

The GPS Pathfinder® ProXH™ receiver introduces a new era in GPS for GIS data collection. A GPS receiver, antenna, and all-day battery in one, the ProXH receiver delivers subfoot (30 cm) accuracy with Trimble's revolutionary H-Star™ technology.

Don't be fooled by its rugged good looks—the ProXH receiver is quite simply the most sophisticated high performance GPS receiver on the market.



ST. LOUIS

36 Kirkham Industrial
St. Louis, MO 63119
(800) 489-2282 • (314) 968-2282
Fax: (314) 968-9217

KANSAS CITY

918 N. Scott Avenue
Belton, MO 64012
(800) 489-3383 • (816) 331-3383
Fax: (816) 331-7199

www.seilerinst.com

Membership Report

There are currently 235 paid members in the Missouri Mappers Association. Sixty-two counties have memberships. Membership fees will be due again at the Annual Meeting.

Respectfully Submitted,
Gladys Smith

Treasurers Report

The Executive Board, at their regular meeting on June 2, 2006, voted to move the checking account from Regions Bank to US Bank because of the monthly service fee which Regions Bank had begun to charge in December of 2005. Randy Lewis, President and Marti Suiter, Treasurer opened the new account at US Bank in Rolla. We are hopeful this change will be beneficial to the organization and also easier for the officers when changes are made each year. The Treasurers Report for June 19, 2006 can be found elsewhere in this newsletter.

West Central MMA Report

The West Central Chapter of the MMA met April 21, 2006 at Ha-Ha-Tonka State Park for a mapping-walk through the grounds. We stopped at the mansion and took pictures, then proceeded to drive around to the spring. Two of our members started to climb the stairs, but decided to descend before reaching the half way mark. (The climb is 250 feet straight up, but the stairs go at an angle with over 400 steps) After the tour, the group went into Camden-ton to enjoy lunch at Risky's. The business meeting revolved around electing a new chairperson. Marti Suiter was elected due to the fact that she was the only volunteer. The next meeting of West Central Missouri Mappers will be on July 13, 2006 where we will meet with the West Central Assessors for a combined meeting/float trip.

Marti Suiter

Chairperson

Northeast Chapter Report

The Northeast Chapter of the Missouri Mappers Association met on June 16, 2006 at the Poepping, Stone, Bach & Associates, Inc. office in Hannibal Missouri. The meeting lasted from 11:00 am to 1:00 pm. There were approximately 15 people in attendance. The meeting began with Shane McDermott of Poepping, Stone, Bach & Associates, Inc. giving a presentation on the Missouri Mappers Association, and the upcoming Annual Meeting. Then Kevin Dicks of Poepping, Stone, Bach & Associates, Inc. gave a 30 minute demonstration on parcel mapping techniques. Then Kim Swisher of Kucera Internation gave a 30 minute presentation on LiDAR technology. Finally came lunch, Papa Johns Pizza, compliments of Poepping, Stone, Bach & Associates, Inc.

Our next meeting will be some time later this fall, after the Annual Meeting.



1998, 1999, 2000, 2001, 2002, 2003, 2004, 2005, 2006, 2007, 2008, 2009, 2010, 2011, 2012, 2013, 2014, 2015, 2016, 2017, 2018, 2019, 2020, 2021, 2022, 2023, 2024, 2025, 2026, 2027, 2028, 2029, 2030, 2031, 2032, 2033, 2034, 2035, 2036, 2037, 2038, 2039, 2040, 2041, 2042, 2043, 2044, 2045, 2046, 2047, 2048, 2049, 2050, 2051, 2052, 2053, 2054, 2055, 2056, 2057, 2058, 2059, 2060, 2061, 2062, 2063, 2064, 2065, 2066, 2067, 2068, 2069, 2070, 2071, 2072, 2073, 2074, 2075, 2076, 2077, 2078, 2079, 2080, 2081, 2082, 2083, 2084, 2085, 2086, 2087, 2088, 2089, 2090, 2091, 2092, 2093, 2094, 2095, 2096, 2097, 2098, 2099, 2100, 2101, 2102, 2103, 2104, 2105, 2106, 2107, 2108, 2109, 2110, 2111, 2112, 2113, 2114, 2115, 2116, 2117, 2118, 2119, 2120, 2121, 2122, 2123, 2124, 2125, 2126, 2127, 2128, 2129, 2130, 2131, 2132, 2133, 2134, 2135, 2136, 2137, 2138, 2139, 2140, 2141, 2142, 2143, 2144, 2145, 2146, 2147, 2148, 2149, 2150, 2151, 2152, 2153, 2154, 2155, 2156, 2157, 2158, 2159, 2160, 2161, 2162, 2163, 2164, 2165, 2166, 2167, 2168, 2169, 2170, 2171, 2172, 2173, 2174, 2175, 2176, 2177, 2178, 2179, 2180, 2181, 2182, 2183, 2184, 2185, 2186, 2187, 2188, 2189, 2190, 2191, 2192, 2193, 2194, 2195, 2196, 2197, 2198, 2199, 2200, 2201, 2202, 2203, 2204, 2205, 2206, 2207, 2208, 2209, 2210, 2211, 2212, 2213, 2214, 2215, 2216, 2217, 2218, 2219, 2220, 2221, 2222, 2223, 2224, 2225, 2226, 2227, 2228, 2229, 2230, 2231, 2232, 2233, 2234, 2235, 2236, 2237, 2238, 2239, 2240, 2241, 2242, 2243, 2244, 2245, 2246, 2247, 2248, 2249, 2250, 2251, 2252, 2253, 2254, 2255, 2256, 2257, 2258, 2259, 2260, 2261, 2262, 2263, 2264, 2265, 2266, 2267, 2268, 2269, 2270, 2271, 2272, 2273, 2274, 2275, 2276, 2277, 2278, 2279, 2280, 2281, 2282, 2283, 2284, 2285, 2286, 2287, 2288, 2289, 2290, 2291, 2292, 2293, 2294, 2295, 2296, 2297, 2298, 2299, 2300, 2301, 2302, 2303, 2304, 2305, 2306, 2307, 2308, 2309, 2310, 2311, 2312, 2313, 2314, 2315, 2316, 2317, 2318, 2319, 2320, 2321, 2322, 2323, 2324, 2325, 2326, 2327, 2328, 2329, 2330, 2331, 2332, 2333, 2334, 2335, 2336, 2337, 2338, 2339, 2340, 2341, 2342, 2343, 2344, 2345, 2346, 2347, 2348, 2349, 2350, 2351, 2352, 2353, 2354, 2355, 2356, 2357, 2358, 2359, 2360, 2361, 2362, 2363, 2364, 2365, 2366, 2367, 2368, 2369, 2370, 2371, 2372, 2373, 2374, 2375, 2376, 2377, 2378, 2379, 2380, 2381, 2382, 2383, 2384, 2385, 2386, 2387, 2388, 2389, 2390, 2391, 2392, 2393, 2394, 2395, 2396, 2397, 2398, 2399, 2400, 2401, 2402, 2403, 2404, 2405, 2406, 2407, 2408, 2409, 2410, 2411, 2412, 2413, 2414, 2415, 2416, 2417, 2418, 2419, 2420, 2421, 2422, 2423, 2424, 2425, 2426, 2427, 2428, 2429, 2430, 2431, 2432, 2433, 2434, 2435, 2436, 2437, 2438, 2439, 2440, 2441, 2442, 2443, 2444, 2445, 2446, 2447, 2448, 2449, 2450, 2451, 2452, 2453, 2454, 2455, 2456, 2457, 2458, 2459, 2460, 2461, 2462, 2463, 2464, 2465, 2466, 2467, 2468, 2469, 2470, 2471, 2472, 2473, 2474, 2475, 2476, 2477, 2478, 2479, 2480, 2481, 2482, 2483, 2484, 2485, 2486, 2487, 2488, 2489, 2490, 2491, 2492, 2493, 2494, 2495, 2496, 2497, 2498, 2499, 2500, 2501, 2502, 2503, 2504, 2505, 2506, 2507, 2508, 2509, 2510, 2511, 2512, 2513, 2514, 2515, 2516, 2517, 2518, 2519, 2520, 2521, 2522, 2523, 2524, 2525, 2526, 2527, 2528, 2529, 2530, 2531, 2532, 2533, 2534, 2535, 2536, 2537, 2538, 2539, 2540, 2541, 2542, 2543, 2544, 2545, 2546, 2547, 2548, 2549, 2550, 2551, 2552, 2553, 2554, 2555, 2556, 2557, 2558, 2559, 2560, 2561, 2562, 2563, 2564, 2565, 2566, 2567, 2568, 2569, 2570, 2571, 2572, 2573, 2574, 2575, 2576, 2577, 2578, 2579, 2580, 2581, 2582, 2583, 2584, 2585, 2586, 2587, 2588, 2589, 2590, 2591, 2592, 2593, 2594, 2595, 2596, 2597, 2598, 2599, 2600, 2601, 2602, 2603, 2604, 2605, 2606, 2607, 2608, 2609, 2610, 2611, 2612, 2613, 2614, 2615, 2616, 2617, 2618, 2619, 2620, 2621, 2622, 2623, 2624, 2625, 2626, 2627, 2628, 2629, 2630, 2631, 2632, 2633, 2634, 2635, 2636, 2637, 2638, 2639, 2640, 2641, 2642, 2643, 2644, 2645, 2646, 2647, 2648, 2649, 2650, 2651, 2652, 2653, 2654, 2655, 2656, 2657, 2658, 2659, 2660, 2661, 2662, 2663, 2664, 2665, 2666, 2667, 2668, 2669, 2670, 2671, 2672, 2673, 2674, 2675, 2676, 2677, 2678, 2679, 26

Industry leading know-how and technology

A leader in providing GIS solutions to municipal, county, and state government. With the successful implementation of over 150 projects, and the development and hosting of over 70 ArcIMS based websites, The Schneider Corporation represents the cutting-edge of GIS and data warehousing technology. Contact us to put our experience to work for you.



Schneider

www.schneidercorp.com
866.973.7100



AWARDS COMMITTEE REPORT July 2006

The awards have been ordered. Please join us at the annual meeting to see who receives the “Boss of the Year”, “Mapper of the Year”, and “Fireball” awards.

Respectfully submitted,
Belinka Novotny-Held
Awards Committee Chair

HISTORICAL COMMITTEE REPORT Belinka Novotny-Held, Committee Chair July 2006

The historical committee has compiled a historical book for the 2005/2006 year. Information found in the book includes the 2006 Annual Meeting information, Board Meeting Minutes and Committee Reports, a membership list and newsletters sent for this year. It will be available for viewing at the annual meeting.

Kim Swisher has agreed to be the official photographer for this year’s annual meeting. Thanks Kim!

CENTRAL EAST CHAPTER NEWS Jan. 10, 2006

The Central East Chapter of MMA will meet at the annual meeting. Please come with ideas for upcoming meetings. We will have an election so come prepared with nominations for President and Vice President, as these terms will expire at the annual meeting.

Respectfully submitted, Belinka Novotny-Held CEMMA President

THE RECTANGULAR SURVEY SYSTEM?

Can you answer these QUESTIONS?

- Is the east line of a typical section parallel to the west line of the same section?
- Will the north ½ and the south ½ of a Section be equal in area?
- Is there any difference between the location of a “Lost Section corner” and the “Original Section corner”?
- What is the meaning of the term “Fractional” when used in legal descriptions?
- Is there any difference between conveying the south ½ of a section verses conveying both the southwest ¼ and the southeast ¼ of the same section? Consider both area and shape.
- Have some FUN with this one: Party “A” has a Quit Claim deed prepared (*see description below*) to sell real estate to Party “B” for a thousand dollars.

Can you find any errors in the description?

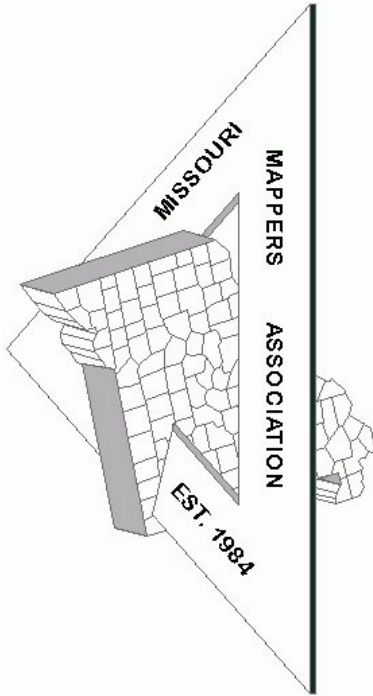
The North ½ of the West ½ of the South ½ of Section 37, Township 244 North, Range 7 South of the 7th Principal Meridian in the Great State of Missouri, EXCEPTING THEREFROM the northwest ¼ of the southwest ¼ and the northeast ¼ of the southwest ¼ of said section 37.

- Additional thought provoking questions:
 - What reservations might Party “B” have and why?
 - Could a Missouri Mapper draw and process this parcel?
 - Would the Records office record this instrument?
 - What issues and legal principals might factor into interpreting the description and any subsequent conveyances?

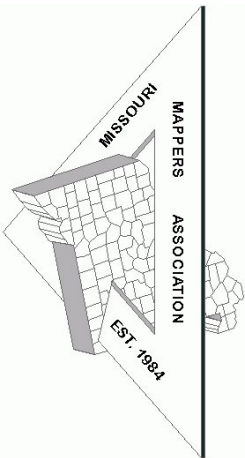
Concerning education -- Mark Twain said something like this, “I never let my schooling get in the way of my education”.

Submitted by: your MMA Education Committee

Missouri Mappers Association
P.O. Box 1692
JEFFERSON CITY, MO 65102



Missouri Mappers Association
P.O. Box 1692
Jefferson City, Missouri 65102



We have plenty of ad space available for the upcoming issues. Please contact Shane McDermott at shanem@psba.com for more information. Rates are as follows:

Business Card	3 Issues - \$25
1/4 Page	3 Issues - \$100
1/2 Page	\$50 per Issue
Full Page	\$100 Per Issue

Be a **Newsletter Sponsor** with a 1/4 page advertisement on the front page of one issue: \$250 Per Issue

ARTICLE AND NEWS SUBMISSIONS

Article and news submissions for topics that cover issues that are important to all of us can be sent via email or snail-mail to the following address for consideration for future publications.

Shane C. McDermott, GISP
Poepping, Stone, Bach & Associates, Inc.
100 S. 54th Street
Quincy, IL 62301
217-223-4605
shanem@psba.com