

MISSOURI MAPPERS ASSOCIATION

VOLUME 21, ISSUE 3

JULY 2005

LETTER FROM THE PRESIDENT, KIM SWISHER

Buenos Dias Mappers! I hope everyone is having an enjoyable summer. I'll keep this "letter from the Prez" short since this newsletter issue is jam-packed with important information regarding our upcoming Conference. So here are a few random thoughts.

Our Conference agenda is looking very informative and entertaining. We have an excellent cross-section of topics, speakers and workshops which should appeal to a wide number of attendees.

It's time to start thinking about next year's officer nominations. I would like to encourage everyone to take the time to become involved as an officer

or board member. It's a great opportunity to work with a terrific "cast of characters" and we're always looking for new ideas.

For something new this year. We will be holding a raffle for airfare and hotel to Cancun, Mexico for 3 nights. The tickets will cost \$10 each and will be available at the registration desk.

Please submit your Conference Registration as soon as possible. We'll be ordering polo shirts as part of your registration packet, and we need plenty of time for the embroidery.

We've had a nice response for the BBQ on Tuesday night. If you're interested in lending a hand, please contact the official MMA catering crew, Randy Lewis or Alice Lee.

I've had a wonderful year as President but the hard working Board members and Committee chairs made it extremely easy. Many, many thanks to you all. You made my job not only easier but a lot of fun as well.

See Y'all at the Lake for our "2005 Mapping Fiesta"!

Respectfully submitted
Kim Swisher
President

INSIDE THIS ISSUE:

CONFERENCE INFO	3
GIS TOOLS	5
COMMITTEE REPORTS	7-8
GOLF INFO	12
TREASURERS REPORT	15
FUN STUFF	18

GIS Day 2005

GIS Day is a grassroots event that formalizes the practice of geographic information systems (GIS) users and vendors of opening their doors to schools, businesses, and the general public to showcase real-world applications of this important technology.

www.gisday.com





7th Biennial GIS Conference

Sponsored by the
Iowa Geographic Information Council (IGIC)

Iowa's GIS Roadmap: Work Zones, Speed Limits and Destinations

August 30 - September 1, 2005

Iowa State University
Scheman Building
Ames, Iowa



<http://www.urisa.org>

<http://www.esri.com>

The 43rd Annual
Conference of the Urban
and Regional Information
Systems Association

October 9-12, 2005
Hyatt Regency
Kansas City, Missouri



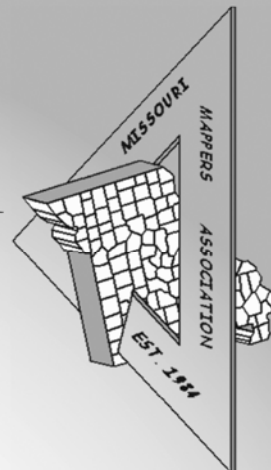
Twenty-Fifth Annual ESRI International
User Conference



2005

Missouri Mappers Association

21st Annual Conference



TOPICS INCLUDE:

- Andy Wagner, The City of Maryland Heights, "Integration of Asset Management and GIS at the Municipal Level"
- Mark DUEWELL, Missouri Spatial Data Information Service, "Grant Writing Techniques for GIS Development"
- Mohamed Kacem, GeoDecisions, "The Conversion and Distribution of Parcel Data at Albemarle County, Virginia"
- Stephen Marsh, Jackson County, "Retracing the Steps of Moving from Pen and Ink Mapping to GIS at Jackson County"
- Apex, "Survey Module in Apex IV™ Software"
- Jerry Bartels, Seiler Instrument, "Introductory Workshop: Drawing and Plotting in AutoDesk Map 2006" and "Using Trimble Handhelds to Map the Resort at Port Arrowhead"
- Heather Milton, ESRI, "Workshop: ArcGIS 9.1 for the Intermediate GIS User"
- The Sidwell Company, "Workshop: Lines, Tangents, Bearings...Oh My!"
- Tony Spicci, "The State of Missouri's Efforts in the National States Geographic Information Council"

For more info, contact Shannon Armstrong at sarmstrong@sidwellco.com or 630.549.1000

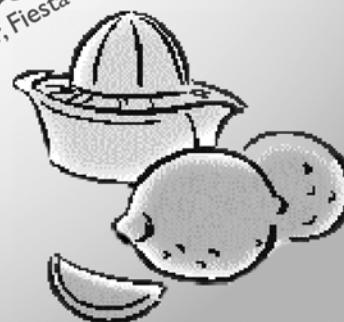
Join us at these social events:

Tuesday, Aug 2
Cookin' with the MMA Board



Wednesday, Aug 3
Vendor Reception, Lake of the Ozarks Cruise

Thursday, Aug 4
Mexican Dinner, Fiesta on the Patio



August 2-5, 2005
Lake of the Ozarks, MO
The Resort at Port Arrowhead
(formerly Holiday Inn Sunspree Resort)

Legislative Committee

Here's a rundown on legislation that affects our fine Missouri Mappers. Overall, we had a successful session. Please find listed bills and issues of importance.

House Bill 58 – County Bill

Change in language in RSMo 67.1850 giving all counties and cities control of their GIS systems, (MMA priority).

Several provisions in the bill that affect assessors offices:

- Additional clarification on the Homestead Provision
- Right to go on real property in order to assess real property
- Language to clarify three year budget average for assessors
- Creates a Business Personal Property Depreciation Schedule

Senate Bill 210 – County Bill

Contains same provisions as House Bill 58

House Bill 461 – Business Personal Property Schedule – Rep. Mike Sutherland

- Creates a Business Personal Property Schedule
- Language to further clarify Homestead Provision

Senate Bill 287 – School Foundation Formula

Includes language that requires the Joint Committee on Tax Policy to analyze property tax assessments and report to the General Assembly and the State Tax Commission.

Assessment Maintenance Fund – Same funding level as last year although it was a struggle. There was a lot of discussion in the House and Senate Committees and on the Floor.

Respectively submitted:

Darrel L. King, Legislative Chair

New GIS Tool for ArcMap by Soto Technologies

Attributor is an application that integrates with ESRI's ArcMap™ to automate repeated attributing task during an edit session. The attribute settings are managed and controlled through an easy to use interface allowing for customized attribute setups.

Features:

- Automatic attribution of new features
- Automatic attribution of existing features
- Broadcast attribute settings to all layers or to a single layer
- Override GDB Default Attribute Values
- Save/Open Custom Attributelist
- Enable/Disable a single attribute setting
- Utilizes existing Geodatabase Domains
- Turn Attributor ON or OFF
- Tutorial and Sample Data included

Attributor works on Windows NT4, Windows 2000, and XP running ArcGIS 9.0.

Installation instructions are included with the Zip file. Additional support can be found at <http://www.sototechno.com> or by email support@sototechno.com. All comments or suggestions can be directed to info@sototechno.com.

Available at: <http://www.directionsmag.com/files/index.php/view/649>

In today's tight budget environment, GIS decision makers are increasingly being asked to do more with less. Since its introduction in 1998, ImageAmerica's low-cost, high resolution digital ortho solution has been allowing customers nationwide to do just that. With industry leading prices, quick, guaranteed delivery times, high positional accuracy and outstanding customer service, ImageAmerica is quickly becoming the digital ortho solution of choice.



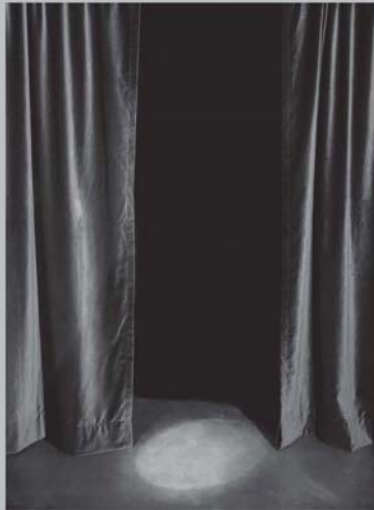
ImageAmerica®



Accurate, High Resolution Digital Ortho

www.image-america.com - 800-275-0133

Worried about getting all flash and no substance with your GIS?



At Sidwell, we encourage you to look behind the curtain.

Everyone's heard the phrase "Pay no attention to that man behind the curtain!" Some companies sell GIS using flash and sizzle, and hope you'll overlook the fact that their solutions have no substance, in every area from their experience, to their staff, to their reputation.

At Sidwell, we welcome our clients to visit us, see our facilities, meet our staff and call our customers. We take great pride in our ability to provide our clients with GIS solutions of substance that will serve their needs both now and in the future. To see what's behind our curtain, contact us today.



675 Sidwell Court • St. Charles, Illinois 60174 • 630.549.1000 • www.sidwellco.com

Annual Meeting Committee Report

The conference agenda and registration form was mailed at the end of May to the 2004 MMA conference attendees, 2005 MMA members and to counties that do not typically attend the annual conference. The registration and exhibitor forms are trickling in to the conference coordinator. Jim Harlan was identified as the potential keynote speaker due to his latest project which focuses on the cultural landscape changes taking place at the county level throughout the state of Missouri. All the speakers for Thursday's sessions have been identified and the ESRI, AutoDesk, Sidwell, and Trimble workshops are shaping up to be very well attended along with the Tuesday night BBQ which was a new event added this year to the conference agenda. The MMA website has the latest information relating to the conference and will continue to be updated as changes are made. The committee is now tightening up the schedule with the hotel, working on getting the bios of speakers, logos of exhibitors, MMA shirts and the giveaways for the attendees.

Aerial Services, Inc.

Mapping Your World® since 1967



Geospatial Services Including:

- GIS Solutions
- Aerial Photography
- LIDAR
- County-wide Digital Orthos
- GPS Surveys-Ground & Airborne
- DEM/DTM Topographic Mapping
- Analytical Aerotriangulation
- Precision Scanning
- Data Conversion

Cedar Falls, Iowa

Toll Free: 877-ASI-4GIS

www.AerialServicesInc.com

Volunteers Needed!!!

Signup sheets will be available at the Missouri Mappers Association Annual Meeting for the different committees. If you are interested in serving on a committee, please stop by and join us. There are many different committees with varying degrees of participation. These committees rely on volunteers, and there is always room for more helping hands.

A big Thank You goes out to all of those who have helped out this year. Your time and input is greatly appreciated.

Awards committee

The awards committee is in the process of selecting the most deserving of the candidates for Mapper of the Year and Boss of the Year. Other awards have been approved and will be presented at the business meeting on Friday morning, August 5, 2005. I have enjoyed serving on the Awards Committee this year and thank all of you for your input.

Marti Suiter, PMM

Awards Chairperson

FOR YOUR COMPLETE MAPPING SERVICES



Bruce Harris
& Associates, Inc.

- GIS Services
- Tax Map Atlases
- Internet Mapping
- 911 Mapping
- Custom Mapping
- Photogrammetric Services
- Geodatabase Conversion
- Infrastructure Mapping

We Put Information In It's Place!

21 North River Street • Batavia, IL 60510

630.761.0951

Visit our website at www.bruceharris.com

Membership Report

Well, it is that time of year again. Membership dues for Missouri Mappers Association are due August 1 of each year. If you are registering and attending MMA Conference this year your dues will be included in your registration fee. If you are not attending then please fill out a membership form and send it with your dues to me. If you need a form please call me and I will see that you get one. If you are a member of the West Central District Chapter please remember to send your \$5.00 dues also. Thank you and have a good conference.

Gladys Smith

Membership Chairperson

5290 NE 50 RD

Osceola, MO 64776

417-646-0880 Or 417-646-2449

Northeast Chapter

We are still in the process of trying to build a Northeast Chapter of the Missouri Mappers Association. We have only had one meeting so far, and would like to build up on our members and have another one late this summer.

If you are interested in becoming a member, please email or call Shane McDermott at 217-223-4605 or shanem@psba.com as soon as possible.

At or next meeting we will have a couple of guest speakers, as well as some GIS presentations. If you are interested in being a guest speaker in the future, please email or call ahead of time.

The meetings take place at the Poepping, Stone, Bach & Associates, Inc. office at the U.S. Federal Building in Hannibal Missouri. Food and drinks are provided.

Thanks, and we look forward to seeing everybody in the Northeast Chapter later this fall.

Shane McDermott



Hurricane Dennis was bearing down on the Gulf Coast of the United States on July 10, 2005, at 12:15 p.m. (16:15 UTC) when the Terra MODIS instrument acquired this true-color image. With winds of 117 knots (135 miles per hour ; 1 knot = 1.15 mph), Dennis was a powerful Category 4 storm just hours away from making landfall. At the time this image was taken, the eye of the storm was about 55 miles (90 kilometers) south, southeast of Pensacola, Florida, and the storm was moving northwest at about 15 knots 18 mph).

KUCERA INTERNATIONAL INC.

Providing high quality, cost-effective aerial mapping services to Missouri counties and cities.

Aerial Photography

Ground and Airborne GPS/IMU

LIDAR

Digital Terrain/Elevation Models

Digital Orthophotography

Digital Planimetry/Topography

Cadastral Mapping

Data Conversion

ORTHOSCAPE® 3D GIS



Kucera International Inc. is a leading provider of aerial mapping and related geomatic services with over 50 years of experience and production offices located throughout the United States.

Kucera customers are served by a skilled staff of experienced professionals, including licensed/certified photogrammetrists, mappers, surveyors, geodesists, engineers, planners, and computer/GIS technicians. Our team works closely and cooperatively with each client to achieve optimal results and ensure time and cost efficiency.



Kucera Midwest

113 Birchwood Drive, Ballwin, MO 63011

Tel (636) 527-6206, Fax (636) 527-6209

k.swisher@kucerainternational.com, www.kucerainternational.com



Quality Workmanship Stands the Test of Time.

Your GIS is an
investment.

Ensure its success with
Midland GIS Solutions.

Midland GIS Solutions

★ *Dedicated* ★ *Reliable* ★ *Professional* ★ *Experienced*

*“Missouri’s Leading
GIS Development Company!”*

... delivering a world of management information!



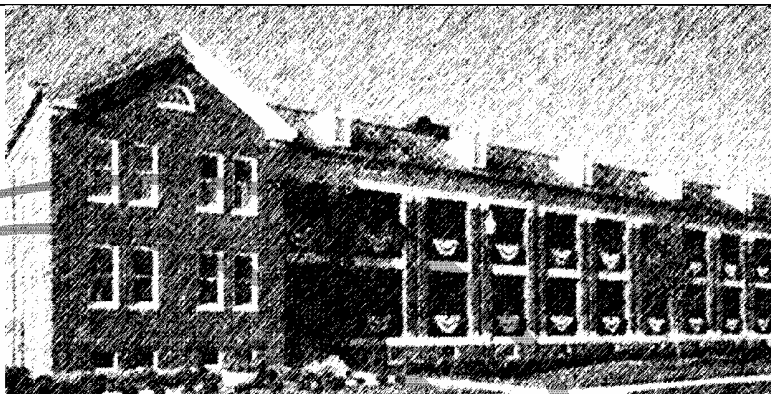
501 N Market
Maryville, MO 64468
(660) 562-0050
www.midlandgis.com

113 Greystone Lane
Sunrise Beach, MO 65079
(573) 374-0885
info@midlandgis.com

Call Toll Free:
877-375-8633



the
Schneider
way



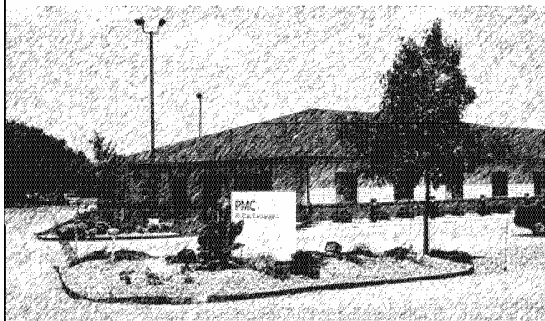
Two Great Companies

PROMAP

GEOGRAPHIC INFORMATION SYSTEMS

a division of  The Schneider Corporation

become *One*



**Extensive
GIS experience**

**Client support
BETTER than ever**

More Resources

Leader in GIS

ProMap is excited to announce we have become a part of The Schneider Corporation team. Now not only can we bring you the best that this GIS technology can offer; we can bring you more services and resources than ever before. Same expected quality, same unsurpassed client support.

We are proud to be a division of The Schneider Corporation and excited to share with you the many advantages this will bring to your organization.

To learn more about The Schneider Corporation please see www.schneidercorp.com.

ProMap-a division of The Schneider Corporation
1531 Airport Road, Suite 2, Ames, Iowa 50010
515-233-3311; www.promap.com

MMA Annual Golf Tournament

August 3rd @ 11:00

Entry Form: If you do not have a team just list your name and we will pair you with one.

Player:_____

Player:_____

Player:_____

Player:_____

Make Checks payable to : Missouri Mappers Association

Send checks and entry form to: Jim Kyle

26302 St. Hwy 413

Galena, MO 65656

Please submit registration by June 15th

Directions to golf course: From the Resort at Port Arrowhead (formerly the Sunspree Resort) turn right out of the parking lot back to Hwy 54. Turn right on 54 towards town and go to the first stop light, Hwy 42, and turn left. Go a quarter of a mile and the course is on your left.

6th Annual MMA Annual Golf Tournament

Bear Creek Valley Golf Course

August 3rd

Starting time: 11:00 / Shotgun start

Cost: \$44.50 per person / includes green fees, carts and range balls.

Prizes will be awarded that evening at the exhibitors social.

Team prizes

Putting contest

Closest to the hole

Longest drive

This course is very challenging so bring lots of golf balls, but we will have a great time on a beautiful course. Get your teams together and send in your registration today.

We are again looking for donated prizes this year. So if you are willing to provide a prize, please let me know. The Wal-Mart gift certificates worked great last year. Call me and let me know if you can donate.

Alcohol is allowed on the course but must be purchased from the pro shop. No coolers allowed. Due to the cost of the tournament, lunch will be on your own.

Jim Kyle - 417-357-0363

Doewiggler67@wmconnect.com

Poepping, Stone, Bach & Associates, Inc.

Architecture, Engineering, GIS Services, Planning & Surveying

Parcel Mapping



Utility Mapping



www.psba.com

ArcIMS Web Development



Land Use Development



Quincy Office
100 S 54th St.
Quincy, IL 62306
Phone 217/223-4605
Toll Free 877/423-4605
Fax 217/223-1546

Hannibal Office
U.S. Federal Building
801 Broadway, Suite 224
Hannibal, MO 63401
Phone 573-406-0541
Fax 573-406-0390

Keokuk Office
3523 Main St.
Keokuk, IA 52632
Phone 319/524-8730
Toll Free 800/249-5869
Fax 319/524-7720

email - shanem@psba.com
web- www.psba.com

TREASURER'S REPORT

May 31, 2005 Treasurers Report

Beginning Balance 12/31/04 \$15,036.81

Receipts

Dues	\$75.00
PMM Certification	\$50.00
Newsletter Advertising	\$933.00
Interest Earned	\$5.89
Total Receipts	\$1,063.89

Beginning Balance + Receipts \$16,100.70

Disbursements

Kim Swisher- Member Cert's	\$150.12
Kim Swisher - Postage	\$29.05
State of MO - DNR Ann Mtg	\$40.00
MAA Tuition- Lisa Chapman	\$425.00
MMA Tuition - Alice Lee	\$425.00
PSBA - Newsletters	\$395.11
Randy Lewis - Mileage	\$77.40
Kim Swisher - Mileage	\$53.40
Jennifer Peterson - Mileage	\$88.80
Shane McDermott - Mileage	\$114.00
Belinka Held - Door Prizes	\$300.00
Post Master - Box Rent	\$68.00
Sew Personal - Ann Mtg	\$1,026.00
Monthly Service Charge	\$3.18
Total Disbursements	\$3,195.06

Balance 5/31/2005 \$12,905.64

midamerica **gis** consortium
announces the

10th
biennial



MIDAMERICA GIS SYMPOSIUM

April 23 - 27, 2006

Westin Crown Center - Kansas City, Missouri

sharing knowledge strengthening communities facilitating communication

information at:

magicweb.kgs.ku.edu

Publication Committee Report

This is the final edition of the newsletter before our annual meeting. I hope you all have enjoyed the newsletter this year. If you have any comments or suggestions on how we could improve or modify the newsletter, please let the committee know.

This is most likely the last year I will be the chairman of the committee. I have had this responsibility for 2 years, and have really enjoyed putting the newsletter together every quarter. But I believe change is good, and I think it is time for some new ideas and creativity, and I hope that we have some folks in our group that are willing to volunteer for this position.

I would like to thank everybody that has submitted stuff to me over the past 2 years, as it has really helped. And I hope that now that I will no longer be the chairman, that I will be able to support the new chairman as we as others have helped me.

Shane McDermott

GIS For a Better World



ESRI has been the world leader in geographic information system (GIS) software for over 30 years. ESRI offers innovative solutions that will help you create, visualize, analyze, and present information better and more clearly. Organizations around the world, as well as local, state, and federal government agencies, use ESRI GIS software to make smart and timely decisions. ESRI offers GIS solutions to help you unlock the spatial component of your valuable data.



Find out how GIS can help your organization.
www.esri.com • 1-800-447-9778 • info@esri.com

USGS Fact of the Day

Lava from the eruption of Kilauea has covered about 40 square miles of rain forest and grassland, paved 8 miles of highway, destroyed 181 homes and other structures valued at \$61 million, and added almost 600 acres of new land to the Island of Hawaii. In addition, the release of sulfur dioxide gas during the ongoing eruption has led to volcanic air pollution and acid rain on parts of the island.

What is Earth Science Week?

Since October 1998, the American Geological Institute has organized this national and international event to help the public gain a better understanding and appreciation for the Earth Sciences and to encourage stewardship of the Earth. This year's Earth Science Week will be held from October 10-16, 2004 and will celebrate the theme "Living on a Restless Earth".

For more information, visit the Earth Science Website:

<http://www.earthsciweek.org/>

GE Energy

Pixel perfect.

The image quality and accuracy from our world-class digital mapping system is unsurpassed in aerial photography, creating a perfect image base for your mapping, engineering and GIS requirements.

See for yourself why GE Energy should be your first choice for advanced aerial imaging and photogrammetric mapping. Contact Don Cleveland at 816-889-1113 or email gsinfo@ge.com



imagination at work



Do You Remember What Missouri Looked Like 50 Years Ago?

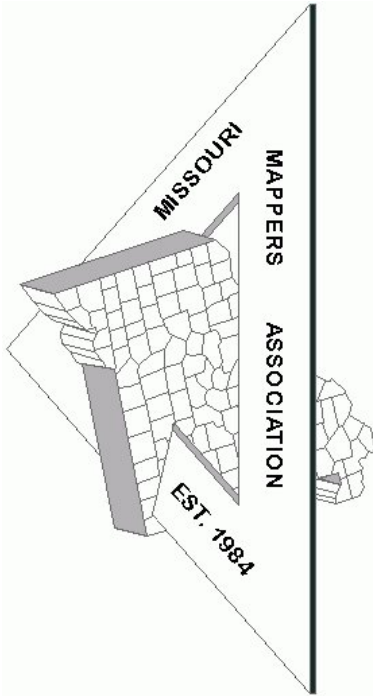
We do, and we have the pictures to prove it. For over 50 years, Surdex has been mapping Missouri. We've photographed every inch of this great state many times. So if you are looking for a complete county-wide project, or a small site for development, Surdex has it covered!



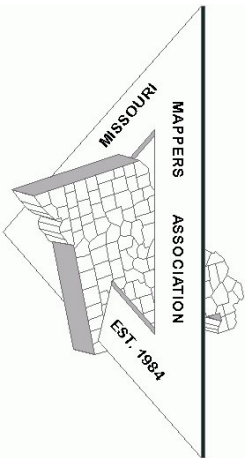
Digital Plan / Topo Mapping
Digital Orthophotography
GPS Control Surveys
Aerial Photography
GIS Services
LIDAR

Contact us at: 636-532-3427
520 Spirit of St. Louis Blvd., Chesterfield, MO 63005 www.surdex.com

Missouri Mappers Association
P.O. Box 1692
JEFFERSON CITY, MO 65102



Missouri Mappers Association
P.O. Box 1692
Jefferson City, Missouri 65102



We have plenty of ad space available for the upcoming issues. Please contact Shane McDermott at shanem@psba.com for more information. Rates are as follows:

Business Card	3 Issues - \$25
1/4 Page	3 Issues - \$100
1/2 Page	\$50 per Issue
Full Page	\$100 Per Issue

Be a **Newsletter Sponsor** with a 1/4 page advertisement on the front page of one issue: \$250 Per Issue

ARTICLE AND NEWS SUBMISSIONS

Article and news submissions for topics that cover issues that are important to all of us can be sent via email or snail-mail to the following address for consideration for future publications.

Shane C. McDermott, GISP
Poepping, Stone, Bach & Associates, Inc.
100 S. 54th Street
Quincy, IL 62301
217-223-4605
shanem@psba.com