

# MISSOURI MAPPERS ASSOCIATION

VOLUME 21, ISSUE 1

JANUARY 2005

## LETTER FROM THE PRESIDENT, KIM SWISHER

Happy 2005 Mappers! I hope everyone enjoyed a wonderful holiday season filled with love and laughter. It's been an eventful term thus far, and I must admit I'm having a great time serving as MMA President.

First, On behalf of the entire MMA organization, I would like to congratulate Darrel King on his election as President of the Missouri Association of Counties. Darrel will do a terrific job as leader of MAC, and will bring greater cooperation between MAC, MMA and the Assessors.

We secured the services of Doug Burnett as the lobbyist for MMA. Doug is also the lobbyist for the Assessor's Association and will assist both organizations in securing more funding through the legislature. Several members have volunteered to prepare an informational brochure and CD to educate the legislators on how better technology can benefit more than just the Assessors office. At present, there is strong opposition from the Press lobby regarding their access to "free" information. The best way to overcome this is to compare mapping data to a bulldozer. Technically, taxpayers own the bulldozer, but not just anyone can take it for a drive. The County is the overseer, and has the ultimate responsibility for the bulldozer (i.e. mapping data).

Thanks for the analogy Darrel! This will be a hard sell, but hopefully by combining the memberships of MMA, MAC and the Assessors, we will have a better chance of passing these bills.

The technology committee has started looking for a new host for our website. Jim LaScala has started to implement some ideas for jazzing up the content as well. He would welcome your comments. They are also available to assist any department interested in setting up their GIS.

I've contacted the Kansas Mappers regarding their Kansas GIS Professional designation. I would like to use their testing procedure as a template for our Missouri GIS Professional designation. They have agreed to discuss it at their next Board meeting. This designation would be a nice addition to our professional status and open the organization to a more diverse membership.

Work has begun in earnest on our upcoming Conference. The tentative agenda is listed elsewhere in the newsletter. (Great job Shannon!) This year's theme is "Mapping is a Fiesta", so pack your sombrero and make plans early to at-

tend. If you have any ideas or suggestions, we welcome your feedback. We also need nominations for Mapper of the Year.

We are planning an informal meeting for MMA members attending the Missouri GIS Conference February 21-23, at Tan-Tar-A. If you would like to participate, please let me know, so I can scout out an appropriate meeting location.

On a sadder note, second year board member Steve Daw, has resigned his position. He is taking a new position for the state of South Dakota GIS. We wish him all the best.

I would like to thank Shane McDermott for volunteering to fill Steve's position. Shane has been chairman of the publication committee for the past 2 years and does a great job on the newsletter. Welcome to the Board Shane!

I've been extremely lucky to have such hard-working committee members this year. You have all made my job much easier, and with the start of the New Year, I just wanted to let you know how much I appreciate it. Thank you all very, very much.

Respectfully Submitted,

*Kim Swisher*

MMA President

### INSIDE THIS ISSUE:

CHAPTER MEETINGS	2-3
CONFERENCE INFO	9
COMMITTEE REPORTS	13
AWARD INFO	16
INTERVIEW	18
TSUNAMI ARTICLE	20
MEMBERS LIST	24



#### MMA Meeting at the Missouri GIS Conference in February

We are having an informal meeting for MMA members at the Missouri GIS Conference on Monday February 21st. It will be in the evening. Please email or call Kim Swisher if you are interested in coming so we can get a head count.

Kim is also looking for a few volunteers to give Shannon Armstrong a hand, so let her know if you can help out.

Kim's phone and email:  
gkswish@sbcglobal.net  
636-527-6206



## ***WEST CENTRAL CHAPTER MEETING***

The West Central Chapter of the Missouri Mappers Association held its quarterly meeting in Howard County, Missouri on Friday, October 22, 2004. WCMMA Chair, Susan Oser and Howard County's Administrative Assistant/Mapper greeted the group with coffee and danish at the Community Room in the Commercial Trust Building directly across the street from the Courthouse in Fayette.

The Mappers held a short business meeting before introducing Dr. Don Hagan and Matt Sorensen, both with Midland GIS Systems. Matt presented a detailed program on an updated and integrated GIS system. The GIS programs all begin with the county's current base mapping system, this the "mapper" is going to be the

"key person" in most GIS systems. Matt explained that GIS systems are built with many tiers of information, but once the data is in place, the updates will only be done one time—all tiers will change automatically. Several counties have either completed or are underway with the initiation of the GIS system. Cole County was mentioned as having a GIS system, but just completed the new and improved program.

Several questions were asked ranging from 9-1-1, Road and Bridges, all taxing counties, health areas, right-of-ways, utilities, voter registration, and many more, as to how the GIS system would be maintained. Hagan responded by saying most counties are establishing GIS office, mostly related to the Assessor and Mapper within each county.

With 24 in attendance, the group was treated to lunch at nearby Emmet's Restaurant for a delicious meal, courtesy of Midland. After lunch the group toured the Howard County Circuit Courtroom where a full wall sized mural depicting many areas of the original Howard "The Mother of Counties" with an alphabetical listing of the 29 Northwest Missouri Counties that came out of the original Howard County.

The next quarterly meeting will be announced after the first of 2005.

### **Aerial Services, Inc.**

Mapping Your World® since 1967



#### **Geospatial Services Including:**

- GIS Solutions
- Aerial Photography
- LIDAR
- County-wide Digital Orthos
- GPS Surveys-Ground & Airborne
- DEM/DTM Topographic Mapping
- Analytical Aerotriangulation
- Precision Scanning
- Data Conversion

Cedar Falls, Iowa  
Toll Free: 877-ASI-4GIS  
[www.AerialServicesInc.com](http://www.AerialServicesInc.com)

## ***NORTHEAST CHAPTER MEETING***

The Northeast Chapter of the Missouri Mappers Association had their first ever meeting at the offices of Poepping, Stone, Bach & Associates, Inc. at the U.S. Federal Building in Hannibal, Missouri on December 10th.

The meeting consisted of:

1. A short presentation on the MMA by Shane McDermott
2. Introductions of all of the attendees, and their current involvement and experience in mapping and GIS
3. A parcel mapping and maintenance demonstration by Kevin Dicks of Poepping, Stone, Bach & Associates, Inc. done using ArcGIS 9 software.
4. A GIS website discussion and demonstration by Shane McDermott which involved the ArcIMS website of Adams County, Illinois developed by Kevin Dicks ([www.adamscountygis.com](http://www.adamscountygis.com))
5. And concluded with an open discussion of mapping and GIS.

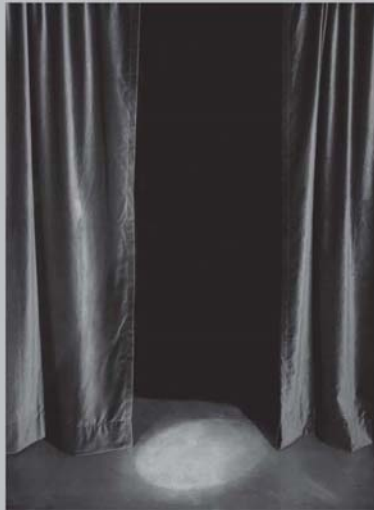
Lunch was served afterwards, compliments of Poepping, Stone, Bach & Associates, Inc. which included the ever popular pizza and soda.

**The next meeting of the Northeast Chapter will be in March of 2005 at the same location. If you are interested in attending please contact Shane McDermott at [shanem@psba.com](mailto:shanem@psba.com) or call him at 217-242-1546.**





## **Worried about getting all flash and no substance with your GIS?**



**At Sidwell, we encourage you to look behind the curtain.**

Everyone's heard the phrase "Pay no attention to that man behind the curtain!" Some companies sell GIS using flash and sizzle, and hope you'll overlook the fact that their solutions have no substance, in every area from their experience, to their staff, to their reputation.

At Sidwell, we welcome our clients to visit us, see our facilities, meet our staff and call our customers. We take great pride in our ability to provide our clients with GIS solutions of substance that will serve their needs both now and in the future. To see what's behind our curtain, contact us today.



675 Sidwell Court • St. Charles, Illinois 60174 • 630.549.1000 • [www.sidwellco.com](http://www.sidwellco.com)

## TOP's AWARDS FOR FY2004

2004 Grant Winners Demonstrate How Advanced Telecommunications Technologies Can Expand Economic Opportunity, Broaden Health Care Delivery, and Enhance Public Services

On October 4, 2004, the U.S. Department of Commerce's National Telecommunications and Information Administration (NTIA) announced \$14.4 million in TOP grants to 27 organizations in 22 states and the District of Columbia. The highly competitive grant program received [494 applications](#) for the fiscal year 2004 grant round, requesting \$277.1 million.

This year's grantees represent a variety of nonprofit organizations and public institutions, including hospitals, K-12 schools, libraries, universities, public safety agencies, community technology providers, and city and county governments. The innovative projects demonstrate an array of cutting-edge broadband technologies and advanced computing applications to expand economic opportunity, broaden health care delivery, and enhance public services. Through robust partnerships with the private sector and state and local organizations, grantees have leveraged federal funds with commitments in non-federal matching funds totaling \$16.9 million.

Services provided by this year's grant winners using state-of-the-art telecommunications and information technologies include: [economic development](#) (web-authoring jobs for people with disabilities; certification for aspiring telehealth technicians; tech-enabled enterprise development for agricultural workers), [telehealth](#) (telemedicine for burn victims and children with mental retardation; simulation surgery), [public safety](#) (fire protection via wireless sensor networks; experimentation with new spectrum allocations; situational awareness to combat terrorism), and [public service delivery](#) (wireless tools to help case workers provide public services to the homeless).

midamerica **gis** consortium  
announces the

10th  
biennial

MIDAMERICA  
GIS  
SYMPOSIUM

April 23 - 27, 2006

Westin Crown Center - Kansas City, Missouri

sharing knowledge strengthening communities facilitating communication

information at:  
**magicweb.kgs.ku.edu**

### The National Map

*The National Map* is a consistent framework for geographic knowledge needed by the Nation. It provides public access to high-quality, geospatial data and information from multiple partners to help support decision making by resource managers and the public. *The National Map* is the product of a consortium of Federal, State, and local partners who provide geospatial data to enhance America's ability to access, integrate, and apply geospatial data at global, national, and local scales. The U.S. Geological Survey (USGS) is committed to meeting the Nation's needs for current base geographic data and maps. Our vision is that, by working with partners, we will ensure that the Nation has access to current, accurate, and nationally consistent digital data and topographic maps derived from those data.



## ***PSBA OFFICE IN HANNIBAL, MISSOURI***

Poepping, Stone, Bach & Associates, Inc. has recently opened a new office in Hannibal, Missouri.

PSBA has a full service GIS sector that provide the services of GIS Consulting, Data Conversion and Development, GIS Management and Project Coordination, Needs Assessment and Implementation Development, ArcIMS Website Development, GPS and Ground Control for aerial photography and other mapping applications, GIS and Software Training, and RFP Development and Vendor Selection Assistance.

PSBA has been serving the Missouri, Illinois, and Iowa areas

with Architectural, Engineering, Planning, Surveying, and GIS services since 1968.

For more information on PSBA you can visit their website at [www.psba.com](http://www.psba.com) or call their Missouri office at 573-406-0541.



### **PSBA GIS Department:**

Shane McDermott, GIS Manager

Pat Poepping, President

Kevin Dicks, GIS Specialist

Joe Darnell, GIS Technician

Tracy Ludwig, GIS Technician

Mike Ohnemus, GIS Technician

## **KUCERA INTERNATIONAL INC.**

**Providing high quality, cost-effective aerial mapping services to Missouri counties and cities.**

Aerial Photography

Ground and Airborne GPS/IMU

LIDAR

Digital Terrain/Elevation Models

Digital Orthophotography

Digital Planimetry/Topography

Cadastral Mapping

Data Conversion

ORTHOSCAPE® 3D GIS



**Kucera International Inc. is a leading provider of aerial mapping and related geomatic services with over 50 years of experience and production offices located throughout the United States.**

**Kucera customers are served by a skilled staff of experienced professionals, including licensed/certified photogrammetrists, mappers, surveyors, geodesists, engineers, planners, and computer/GIS technicians. Our team works closely and cooperatively with each client to achieve optimal results and ensure time and cost efficiency.**



### **Kucera Midwest**

113 Birchwood Drive, Ballwin, MO 63011

Tel (636) 527-6206, Fax (636) 527-6209

[k.swisher@kucerainternational.com](mailto:k.swisher@kucerainternational.com), [www.kucerainternational.com](http://www.kucerainternational.com)





# Missouri's Proven GIS Data Provider

- ★ County Assessor's Mapping for over 20 years
- ★ Cadastral Mapping for over 30 years
- ★ GIS Development in 30 Counties in Missouri
- ★ Over 60 GIS Projects in Missouri

- |                          |                               |
|--------------------------|-------------------------------|
| ▶ County Government      | ▶ GIS Development             |
| ▶ Municipal Government   | ▶ Cadastral Mapping           |
| ▶ Private Business       | ▶ Utility Mapping             |
| ▶ Regional Associations  | ▶ Parcel Data Conversion      |
| ▶ Educational Facilities | ▶ Needs Assessments           |
| ▶ Institutions           | ▶ Grant Writing               |
| ▶ Transportation         | ▶ GPS Services                |
| ▶ Homeland Security      | ▶ Professional Land Surveying |



*... delivering a world of management information!*



## Midland GIS Solutions

501 N Market  
Maryville, MO 64468

(660) 562-0050

[www.midlandgis.com](http://www.midlandgis.com)

113 Greystone Lane  
Sunrise Beach, MO 65079

(573) 374-0885

[info@midlandgis.com](mailto:info@midlandgis.com)

Toll Free: 877-375-8633





**2005**

**Missouri Mappers Association  
21<sup>st</sup> Annual Conference**

**August 2-5, 2005  
Lake in the Ozarks, MO  
The Resort of Port Arrowhead  
(formerly Holiday Inn Sunspree Resort)**



**Preliminary session topics:**

**Integrating Asset Management and GIS: The City of Maryland Heights**

**Sharing Data with SEMORPC**

**Grant Writing For GIS**

**Surveying Tools for GIS and Mapping Professionals**

**The State of Missouri's Efforts in the National States Geographic Information Council**

**Latest ESRI Technology Workshop**

**Lines, Tangents and Bearings, Oh My! Workshop**

**The GeoWall Consortium: Digital Landscapes in 3-D**

**A Case Study: The Jackson County Experience**

**MO Mappers Association Bill Status Report**  
**Prepared by: Darrel L. King**  
12-27-2004

Proposed legislation, This is the proposed change in Chapter 67 Section 67.1850 we are looking for the right legislator to carry this bill, it may be Rep. Mike Sutherland but his plate is very full at this time. If anyone has a suggestion on any one in the General Assembly with knowledge of GIS, and that would champion our cause let me know.

Thanks,  
Darrel

***Missouri Revised Statutes***  
**Chapter 67**  
**Political Subdivisions, Miscellaneous Powers**  
**Section 67.1850**

December 27, 2004

**Geographical information system may be created, purpose, open records policy, fees for information, licensing, liability.**

67.1850. 1. As used in this section, the following terms mean:

- (1) "Community", any municipality or county as defined in this section;
- (2) "County", any county [~~of the first classification without a charter form of government;~~]
- (3) "Geographical information system", a computerized, spatial coordinate mapping and relational database technology which:
  - (a) Captures, assembles, stores, converts, manages, analyzes, amalgamates and records, in the digital mode, all kinds and types of information and data;
  - (b) Transforms such information and data into intelligence and subsequently retrieves, presents and distributes that intelligence to a user for use in making the intelligent decisions necessary for sound management;
- (4) "Municipality", any city, town, or village [~~city with a population of at least sixty thousand inhabitants and located in a county of the first classification without a charter form of government.~~]

2. The development of geographical information systems has not been undertaken in any large-scale and useful way by private enterprise. The use of modern technology can enhance the planning and decision-making processes of communities. The development of geographical information systems is a time-consuming and expensive activity. In the interest of maintaining community governments open and accessible to the public, information gathered by communities for use in a geographical information system, unless properly made a closed record, should be available to the public. However, access to the information in a way by which a person could render the investment of the public

in a geographical information system a special benefit to that person, and not to the public, should not be permitted.

3. Any community as defined in this section may create a geographical information system for the community. The scope of the geographical information system shall be determined by the governing body of the community. The method of creation, maintenance, use and distribution of the geographical information system shall be determined by the governing body of the community. A community shall not mandate the use of this system or allocate the costs of the system to nonusers.

4. The information collected or assimilated by a community for use in a geographical information system shall not be withheld from the public, unless otherwise properly made a closed record of the community as provided by section 610.021, RSMo. The information collected or assimilated by a community for use in a geographical information system need not be disclosed in a form which may be read or manipulated by computer, absent a license agreement between the community and the person requesting the information.

5. Information collected or assimilated by a community for use in a geographical information system and disclosed in any form, other than in a form which may be read or manipulated by computer, shall be provided for a reasonable fee, as established by section 610.026, RSMo. A community maintaining a geographical information system shall make maps and other products of the system available to the public. The cost of the map or other product shall not exceed a reasonable fee representing the cost to the community of time, equipment and personnel in the production of the map or other product. A community may license the use of a geographical information system. The total cost of licensing a geographical information system may not exceed the cost, as established by section 610.026, RSMo, of the:

(1) Cost to the community of time, equipment and personnel in the production of the information in a geographical information system or the production of the geographical information system; and

(2) Cost to the community of the creation, purchase, or other acquisition of the information in a geographical information system or of the geographical information system.

6. The provisions of this section shall not hinder the daily or routine collection of data from the geographical information system by real estate brokers and agents, title collectors, developers, surveyors, utility companies, banks, news media or mortgage companies, nor shall the provisions allow for the charging of fees for the collection of such data exceeding that allowed pursuant to section 610.026, RSMo. The provisions of this section, however, shall allow a community maintaining a geographical information system to license and establish costs for the use of the system's computer program and computer software.

7. A community distributing information used in a geographical information system or distributing a geographical information system shall not be liable for any damages which may arise from any error which may exist in the information or the geographical information system.



# **Poepping, Stone, Bach & Associates, Inc.**

**Architecture, Engineering, GIS Services, Planning & Surveying**

## **Parcel Maintenance**

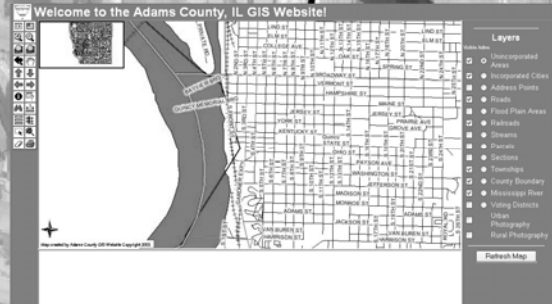


## **Utility Mapping**



**[www.psba.com](http://www.psba.com)**

## **ArcIMS Web Development**



## **Land Use Development**



**100 S. 54th St.**      **3523 Main St.**  
**Quincy, IL 62305**    **Keokuk, IA 52632**  
**217-223-4605**      **319-524-8730**  
**email - shanem@psba.com**  
**web- www.psba.com**

## ***TREASURER'S REPORT***

### **Treasurers Report as of December 30, 2004**

Beginning Balance		\$17,159.54
-------------------	--	-------------

Receipts	\$0	
----------	-----	--

Dues	\$635.00	
------	----------	--

Conference Fees	\$0	
-----------------	-----	--

Education	\$0	
-----------	-----	--

Exhibitor Fees	\$0	
----------------	-----	--

Golf Tournament	\$0	
-----------------	-----	--

West Central Dues	\$5.00	
-------------------	--------	--

Miscellaneous	\$425.00	
---------------	----------	--

Cancellation Tuition for A. Lee		
---------------------------------	--	--

Interest Earned	\$4.02	
-----------------	--------	--

Total Receipts	\$1,219.02	
----------------	------------	--

Beginning Balance + Receipts		\$18,378.56
------------------------------	--	-------------

#### Disbursements

Randy Lewis - Mileage	\$77.40	
-----------------------	---------	--

Kim Swisher - Mileage	\$53.40	
-----------------------	---------	--

P.S.B.A. - Newsletter	\$202.20	
-----------------------	----------	--

Burnett & Assoc. —Lobbyist	\$3,000.00	
----------------------------	------------	--

Monthly Service Charge	\$8.75	
------------------------	--------	--

Total Disbursements	\$3,341.75	
---------------------	------------	--

Balance December 30, 2004		\$15,036.81
---------------------------	--	-------------

The awards committee will soon be putting together a list of nominees for the prestigious awards which will be presented at the 2005 Annual Meeting. In this issue of MMA News are applications for Outstanding Mapper of the Year and Outstanding Boss of the Year awards. If you know someone who is deserving of either of these awards, please keep the following things in mind. First, make sure the person you are nominating will be attending the Annual Meeting and that they have been a member of the MMA for at least 1 year, and their membership is currently in good standing with the MMA. For Boss of the Year, we will be looking for anything they may have done to improve the mapping department as well as community involvement should also be mentioned. The Mapper of the Year should also demonstrate many of the same qualities, but more importantly should include what they do in the mapping department that is over and above the everyday job. Please send all nominations to:

Marti Suiter, PMM

PO Box 97

Hermitage, MO 65668

### **Historical Committee Report**

The photos from the 2004 Conference have been printed and inserted into the binders. I also included a copy of the 20th anniversary PowerPoint presentation and the 2004 Conference registration form.

### **Annual Meeting Committee Report**

The 2005 annual meeting planning is underway with a conference program that is nearly complete. Suggestions were given by the board and MMA members over the past few months and those suggestions were taken into context when developing the agenda. A good mix of topics that cover GIS and mapping at the municipal, regional and state level will be represented. Information on session topics can be found in the January, 2005 MMA newsletter. A postcard mailer advertising the conference and session topics is under development and will be sent to county and municipal personnel in the state of Missouri. There is always room for more attendees! We are also in the midst organizing additional social events to take place during the conference, including a barbeque or fish fry at a state park in the evening on Tuesday, August 2 along with a miniature golf outing.

Shannon Armstrong



### **Publication Committee Report**

The Publication Committee includes Shane McDermott (Chairman), Jennifer Peterson, and Marti Suiter. We sent out our usual Quarterly Newsletters in January, April, July, and October of 2004. Overall we sent out a little over 1000 newsletters in 2004, we usually average around 270 per issue. The majority of the newsletters are still sent out via regular mail, but there are 33 individuals signed up to receive the digital version via email.

Advertisements were great in 2004. The newsletter generated \$2109 in Advertising Revenue, with an average of about 10 ads per issue.

The October issue included a new section, which is an interview with Tim Daniels, the Director of Homeland Security for the State of Missouri. This was a success, and we will continue to publish an interview in every issue.

If you have any ideas, comments, or suggestions please send them to Shane McDermott at [shanem@psba.com](mailto:shanem@psba.com).

## GIS For a Better World



ESRI has been the world leader in geographic information system (GIS) software for over 30 years. ESRI offers innovative solutions that will help you create, visualize, analyze, and present information better and more clearly. Organizations around the world, as well as local, state, and federal government agencies, use ESRI GIS software to make smart and timely decisions. ESRI offers GIS solutions to help you unlock the spatial component of your valuable data.



**Find out how GIS can help your organization.**  
**[www.esri.com](http://www.esri.com) • 1-800-447-9778 • [info@esri.com](mailto:info@esri.com)**

## OUTSTANDING MAPPER OF THE YEAR APPLICATION

The "Outstanding Mapper of the Year" award is presented yearly at the MMA Annual Meeting. It is presented to honor an individual who has displayed outstanding abilities in the cadastral mapping field. Nominees should be a current member in good standing, have been a member for at least one year, have base knowledge of mapping, map management and be technically proficient in mapping techniques and standards. Nominations should be brief and explain why the nominee merits the "Outstanding Mapper of the Year" award. The Awards Committee will review the applications and make recommendations to the MMA Executive Board. Nominations will be accepted through June 1, 2005.

NAME OF NOMINEE: \_\_\_\_\_

EMPLOYER: \_\_\_\_\_

EMPLOYER'S ADDRESS: \_\_\_\_\_

PHONE: \_\_\_\_\_

I believe \_\_\_\_\_ should be nominated for  
Outstanding Mapper of the Year because \_\_\_\_\_

\_\_\_\_\_  
\_\_\_\_\_  
\_\_\_\_\_  
\_\_\_\_\_

(Continue on additional sheet if needed)

SIGNATURE: \_\_\_\_\_

PHONE: \_\_\_\_\_

ADDRESS: \_\_\_\_\_

Mail applications to: Marti Suiter, PMM  
Hickory County Assessor's Office  
PO Box 97  
Hermitage, MO 65668  
Phone: 417-745-6346 Fax: 417-745-6715

## OUTSTANDING BOSS OF THE YEAR APPLICATION

The "Outstanding Boss of the Year" award is presented at the MMA Annual Meeting. It is presented to honor the "Top Boss" who has displayed efforts "above and beyond" in dealing with the mapping department and should not be limited to leadership, management & people skills. Nominees should be a current member in good standing, have been a member for at least one year, and should be planning on attending the annual meeting. Nominations should be brief and explain why the nominee merits the "Outstanding Boss of the Year" award. The Awards Committee will review the applications and make recommendations to the MMA Executive Board. Nominations will be accepted through June 1, 2005.

NAME OF NOMINEE: \_\_\_\_\_

COMPANY: \_\_\_\_\_

COMPANY ADDRESS: \_\_\_\_\_

COMPANY PHONE: \_\_\_\_\_

I believe \_\_\_\_\_ should be nominated for  
Outstanding Boss of the Year because \_\_\_\_\_

\_\_\_\_\_  
\_\_\_\_\_  
\_\_\_\_\_  
\_\_\_\_\_

(Continue on additional sheet if needed)

SIGNATURE: \_\_\_\_\_

PHONE: \_\_\_\_\_

ADDRESS: \_\_\_\_\_

Mail applications to: Marti Suiter, PMM  
Hickory County Assessor's Office  
PO Box 97  
Hermitage, MO 65668  
Phone: 417-745-6346 Fax: 417-745-6715



## Interview with Pete Rahn, Director of MoDOT

Q. How long have you been the Director of the Missouri Department of Transportation?

A. Four months, I started in September of 2004

Q. What did you do prior to this?

A. Previously I served eight years in New Mexico as the Secretary of the Department of Transportation.

Q. Are you in office for a specific period of time? If so, how long?

A. No, I was hired by the Highway and Transportation Commission, and I receive periodic reviews from them. I will be in office until they decide otherwise.

Q. Where are you originally from?

A. New Mexico

Q. Background information? College? Military Service?

A. I went to college at New Mexico State and received a BA in government, and a BS in planning.

Q. Personal information? Married? Children?

A. I am married with two children, a son and a daughter.

Q. Is there a Mapping or GIS division in the Department of Transportation?

A. Yes

Q. Does the Department of Transportation have a specific budget for the development of mapping or GIS data for transportation planning use?

A. There is 1.5 million for statewide long range plans, and 22 mil. for statewide planning a year.

Q. The county assessor's office maintains parcel ownership data, do you utilize this information when doing right of way acquisition?

A. Yes, we are in the process of developing an inventory of property, developmental stages only, but are working on inventorying our current assets.



Q. Has MoDot ever considered a Statewide mapping initiative for Lidar Mapping?

A. I not sure of anything at this time, but we are aware that it is beneficial, and the amount of time and money it can save on a project.

Q. Does MoDot have or plan to have a highly accurate, digital statewide centerline file of all roadways?

A. Currently we are in the process of this. The plan is to move this data set into an all digital GIS system eventually.

Q. I know that MoDOT does a State Wide 5 year Plan. Is this plan done in a GIS format and on a national coordinate system that allows the data to be easily incorporated into other organizations' reports?

A. MoDot does generate maps with GIS. A lot of the internal reports and maps are done with digital GIS data, but some of the larger, more complex maps are still generated using traditional cartographic techniques.

Q. What are your major accomplishments since your becoming Director?

A. Would rather call it significant events: 1. Passage of Amendment 3, which created 1.7 billion dollars of additional work, and allowed acceleration of projects that were in a five year plan. 2. Started a results based management plan, which measures everyone's performance at a quarterly basis. Pete brought this idea from his job in New Mexico.

Q. What are the major items that you are currently working on for the future?

A. Programs boosted by Amendment 3, which requires employees and consultants to work within the force they have now only quicker, and to make all projects come in 10% under budget.

**For more information on the Missouri Department of Transportation you can visit their website at:**

**[www.modot.state.mo.us](http://www.modot.state.mo.us)**



**Bruce Harris**  
& Associates, Inc.

*Complete Mapping Services*

**GIS Services**

**Infrastructure Mapping**

**Tax Map Atlases**

**Internet Mapping**

**Map Maintenance**

**911 Mapping**

**Custom Mapping**

**Photogrammetric Services**

*We put information in it's place!*

21 North River Street ~ Batavia, IL 60510

Telephone 630.761.0951

Visit our website at [www.bruceharris.com](http://www.bruceharris.com)

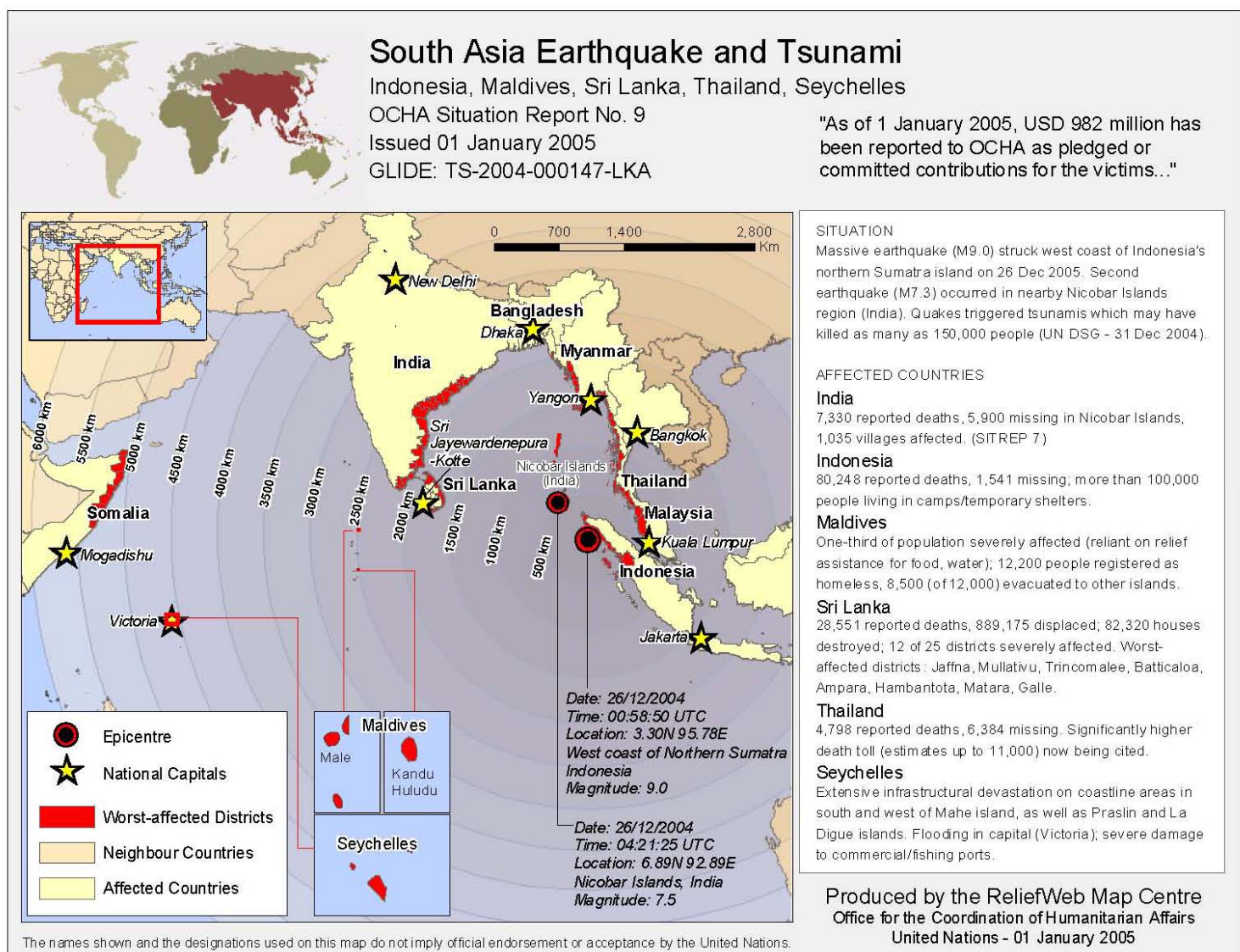


## Illinois Geographic Information Systems Association Spring Conference

April 21-22, 2005

Crowne Plaza Hotel - Springfield, Illinois

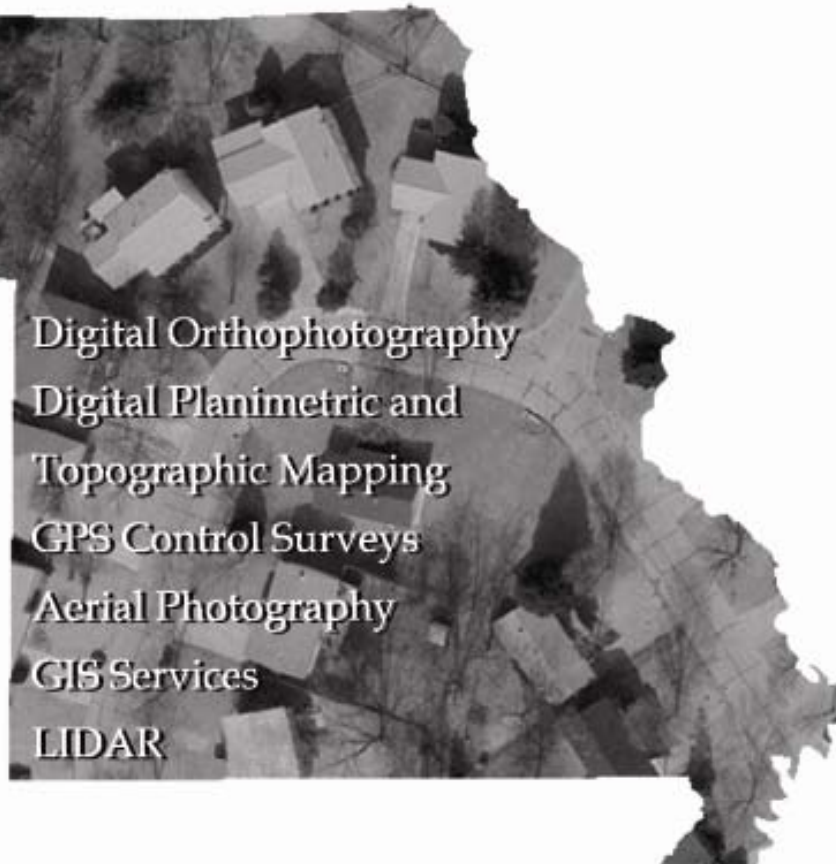
Join your colleagues at the Annual Spring Conference of the Illinois Geographic Information Systems Association. The first day will include various workshops that are interactive classroom style, or hands-on. The second day will offer several concurrent sessions featuring innovative and effective GIS concepts, strategies, and tools. The exhibitor reception and open Board meeting are scheduled to enhance your experience.



## Mapping Missouri since 1954.

Over the years, we've gotten to know Missouri quite well.

Between the NAIP Program and our St. Louis Metro coverage, we've collected aerial photography for every inch of Missouri. Whether it's a county-wide or a small engineering project, call us today to see how we can serve you.



520 Spirit of St. Louis Blvd. ♦ Chesterfield, MO 63005  
voice - 636-532-3427 ♦ fax - 636-537-9638 ♦ [www.surdex.com](http://www.surdex.com)



# **Best Start Best Finish ProMap!**

**I**n auto racing the Best Start and the Best Finish can make the difference between winning or losing. And for GIS, best starts are very critical in achieving the best finish. ProMap has the experience to give you the best start, and the commitment to ensure the best finish.



## OFFICIAL GIS RESULTS

**ProMap**

GIS clients	over 100
WebGIS clients	over 50

BEST START! BEST FINISH!

**PROMAP**  
GEOGRAPHIC INFORMATION SYSTEMS

1531 Airport Road, Suite 2, Ames, IA 50010-8210

Phone: 515-233-3311, [www.promap.com](http://www.promap.com)

The ninth Missouri GIS Conference for Missouri users of geographic information is coming up soon! Its purpose is to foster communication and sharing of geographic technologies, techniques, data, and information within the Missouri user community.

For success we need you!

Visit us at <http://www.mgisac.org/mogis05/> and make your plans to attend. If you have management to convince, the conference is February 21-23, 2005. not in March as it has been since its inception-time is short.

Please send titles and a short explanation of your presentation or poster to the person listed on <http://www.mgisac.org/mogis05/> by January 23, 2005. Full registration materials will be distributed in early January in conjunction with the preliminary program.

There is no doubt someone you could nominate for a GIS award. Someone deserving of some recognition for their work in GIS. Go to:

<http://www.geog.missouri.edu/mogis05/awards/>

and nominate some deserving GIS shaker and mover for an award.

-AND-

There is still open registration for the January 10-11, 2005, Introduction to ArcGIS 9.0 class

[http://msdisweb.missouri.edu/services/gtc\\_classes.htm#introtoarcGIS1](http://msdisweb.missouri.edu/services/gtc_classes.htm#introtoarcGIS1)

taught by Tony Spicci.



In today's tight budget environment, GIS decision makers are increasingly being asked to do more with less. Since its introduction in 1998, ImageAmerica's low-cost, high resolution digital ortho solution has been allowing customers nationwide to do just that. With industry leading prices, quick, guaranteed delivery times, high positional accuracy and outstanding customer service, ImageAmerica is quickly becoming the digital ortho solution of choice.



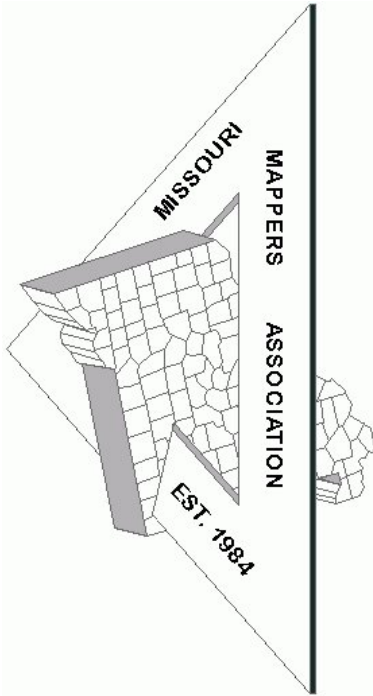
**ImageAmerica®**



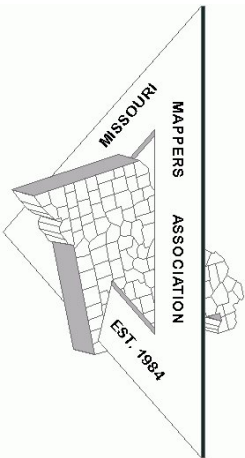
Accurate, High Resolution Digital Ortho

[www.image-america.com](http://www.image-america.com) - 800-275-0133

**Missouri Mappers Association**  
**P.O. Box 1692**  
**JEFFERSON CITY, MO 65102**



Missouri Mappers Association  
P.O. Box 1692  
Jefferson City, Missouri 65102



We have plenty of ad space available for the upcoming issues. Please contact Shane McDermott at [shanem@psba.com](mailto:shanem@psba.com) for more information. Rates are as follows:

<b>Business Card</b>	3 Issues - \$25
<b>1/4 Page</b>	3 Issues - \$100
<b>1/2 Page</b>	\$50 per Issue
<b>Full Page</b>	\$100 Per Issue

Be a **Newsletter Sponsor** with a 1/4 page advertisement on the front page of one issue: \$250 Per Issue

#### ARTICLE AND NEWS SUBMISSIONS

Article and news submissions for topics that cover issues that are important to all of us can be sent via email or snail-mail to the following address for consideration for future publications.

Shane C. McDermott, GISP  
Poepping, Stone, Bach & Associates, Inc.  
100 S. 54th Street  
Quincy, IL 62301  
217-223-4605  
[shanem@psba.com](mailto:shanem@psba.com)