

MISSOURI MAPPERS ASSOCIATION

VOLUME 24, ISSUE 2

APRIL 2008

LETTER FROM THE PRESIDENT, SARAH MURRAY

Happy Spring everyone! It sounds really good to finally say that after all of the weather we have been having, but it is very good to see all the newness of spring and the vibrant colors popping out around us. With the excitement of spring seems to come rejuvenation, and I hope that everyone is beginning to feel that with MMA as well.

I was glad to see that a lot of you were able to participate in the MO GIS standards meetings to get your input to the state in the regional meetings that they were

hosting this winter. If you were not able to attend any of these meetings, you will have another opportunity in a panel discussion that will be happening at this year's annual meeting.

The annual meeting is coming together nicely and anyone that wants to participate is more than welcome to! You will begin to see some changes to the website soon that includes the job posting and training materials that have been discussed in previous newsletters. If you

want anything included please email me and we will get it added for you.

I wish everyone a wonderful spring and look forward to seeing everyone at our meeting in August!

Keep on Mapping!

Sarah Murray

MMA President

2007/2008

smurray@schneidercorp.com

423-650-0191

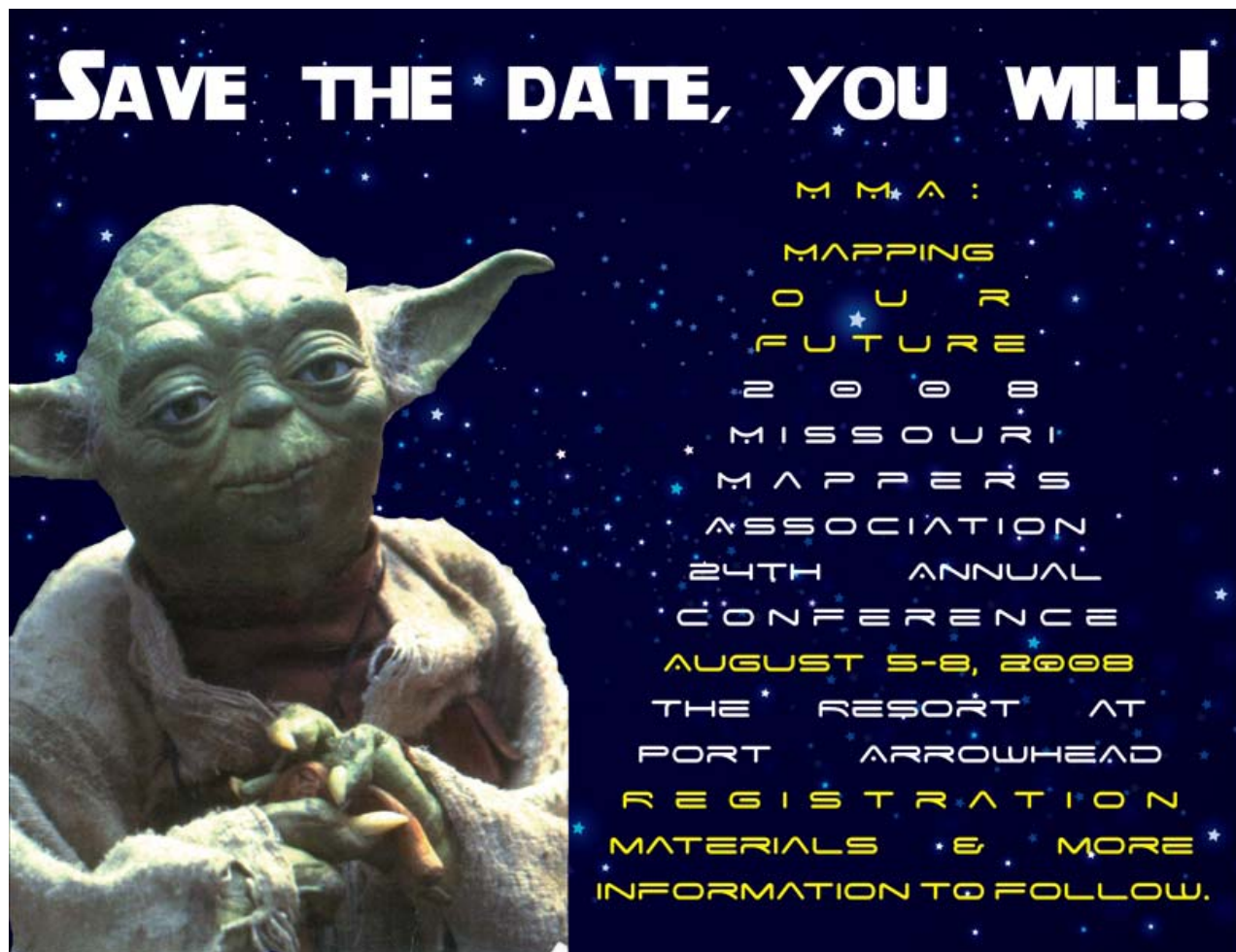
INSIDE THIS ISSUE:

CONFERENCE	2
EDUCATION	3
PMM	3
AWARDS	4
PUBLICATION	6
MEMBERSHIP	10
HISTORICAL	15

***COMING
SOON!!***

**Annual
Meeting Date:**

**August
5th - 8th!!**



The 2008 conference is starting to take shape! This year's theme will be "MMA: Mapping Our Future". Wednesday's workshops will include workshops on mobile GIS and working with strip maps and highway deeds; there will also be a full-day session offered by ESRI on Wednesday. Educational sessions planned for Thursday include discussion of Senate Bill 711, a panel discussion on the development of statewide GIS standards, a geocaching event, and a presentation on deeds and documents and offering web access for land records.

There will also be plenty of social opportunities to hang out with your fellow Missouri mappers! For those not taking a workshop on Wednesday, the golf outing will be held at The Golf Club at Deer Chase. The cost will be \$44/person, which includes 18-holes of golf with cart, picnic lunch after golf (hamburgers, hot dogs, potato salad, etc), tips for lunch, and scoring. Wednesday evening will feature a vendor reception and bowling tournament. Dinner on Thursday will be followed by a boat ride; plans for a post-boat ride happening are also being discussed. Good educational opportunities, with fun and prizes too – you won't want to miss it!

Karen Fouts, CMS

Annual Meeting Chair

Education

Hey Missouri Mappers! The Education Committee would like your input on future classes, topics and workshops you would be interested in attending. This is your chance to help us map out our Missouri Mapper's Education Plan. We would like your input on the length of the classes and workshops. Should these items be single or multiple day events? Your input is important to the success of our Missouri Mapper's Education Plan. Please email your comments, ideas and suggestions to pwiliams@cuivre.com. Don't forget to watch the Missouri Mapper's Newsletter for mapping tips, tricks, games and quizzes.

Respectfully Submitted,
Patty Williams
Education Chair

Certification Committee Report

April 18, 2008

I regret that we had no requests for information on the PMM Certification requirements and no PMM Certification applications were sent out this year. The Application for Professional Designation and PMM Certification Agreement were both published in the January 2008 MMA Newsletter. Even though the application deadline was extended to March 15, 2008 in hopes there would be possible candidates for the PMM Certification test, there was no response. Hopefully next year will be more successful in increasing the number of PMMs.

Respectfully submitted,

Barbara Kaszuba, PMM
PMM Certification Chairman



AWARDS COMMITTEE REPORT

The awards committee is currently seeking nominations for Mapper of the Year. An application is included in the newsletter. Please help the awards committee honor members who have done an outstanding job this year by submitting your nominations. Please recommend any additional awards that you would like the awards committee to present by submitting your ideas to lisac@casscounty.com, or by calling 816-380-8190. Any suggestions to make this a more rewarding year would be appreciated.

Respectfully submitted,

Lisa Chapman

Awards Committee Chairperson



Post Jobs on the MMA Website!

Your company or organization can post a job opening on the MMA website. Just email your job description/information to Katie Shepherd at shepherd@midlandgis.com. The fees for job posting are as follows:

MMA Members: \$25.00

Non-Members: \$50.00

This is a great opportunity to hire someone in the Missouri spatial community to fill your position! Jobs will be posted for 6 months or until the position is filled and we are notified to remove the posting. Jobs will not be posted online until payment is received. Please mail all checks to Katie Shepherd, MMA Treasurer at Midland GIS Solutions, 501 N. Market, Maryville, MO 64468. Checks should be made payable to Missouri Mappers Association. Thank you!

MMA USE ONLY

File # _____ Date Approved _____ Membership _____ Test Date _____ Cert. # _____

MISSOURI MAPPERS ASSOCIATION
APPLICATION FOR PROFESSIONAL DESIGNATION

Name: _____ Date of Birth: _____ Title: _____

Soc. Sec. #: _____ Employer: _____ Phone: _____

Address: _____ City: _____ State: _____ Zip: _____

List professional organizations of which you are a member: _____

List professional designations that you presently hold. Please enclose a copy of the certificate or other document showing evidence of designation. _____

Education

High School – Graduated? Yes ___ No ___ Year _____

College: Name	Location	Dates Attended	Major	Degree
---------------	----------	----------------	-------	--------

List mapping/surveying courses successful completed and dates of completion. Please attach copy of certificates or other documentation showing evidence of successful completion of the courses listed. _____

List mapping/surveying experience that qualifies as your five years of experience. Be specific with dates, titles, work descriptions and references. A detailed resume will be acceptable for this section. If application is not detailed and specific, it may be returned.



Publication Committee Report

This issue will be mailed out to approximately 300 individuals. It will also be posted on our website, along with newsletters from the past.

Advertising Revenue for the April issue is \$616.

This issue is being printed on recycled paper. The normal cost of the printing is around \$160. This issue was closer to \$200, however Mid-West GIS, Inc. picked up the additional cost. This was done in recognition of Earth Day, which was April 22, 2008.

The July edition will be my last issue as Publication Chair. Anybody who would like to participate with the newsletter is encouraged to contact the Board or President as soon as possible.

Shane McDermott, President

Mid-West GIS, Inc.

510 Maine St, Suite 510

Quincy, IL 62301

Aerial Services, Inc.

Professional Geospatial Provider Since 1967

- *Aerial Photography (Digital & Conventional)*
- *Photogrammetry*
- *Orthophotography*
- *LiDAR Surveys*
- *Topographic & Planimetric Mapping*
- *GIS Solutions*

Cedar Falls, Iowa

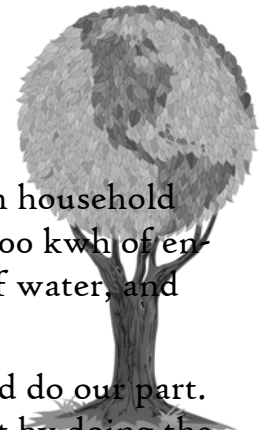
877-ASI-4GIS

www.aerialservicesinc.com

asi



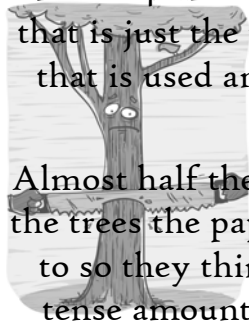
EARTHDAY EVERYDAY! YOU ARE A PART OF EARTH DAY



Did you know that 13,000 pieces of paper are thrown out in a 4 person household every year? Or that using one ton of 100% recycled paper saves over 4,000 kwh of energy, which is enough to power a house for 6 months, 7,000 gallons of water, and keeps more than 60 lbs of pollution out of the air?!

With this being the month of Earth Day we wanted to get involved and do our part. It is something that even in this industry, we can make a difference just by doing the small things.

For example, printing this newsletter on 100% recycled paper. Just this small act with the amount of members this is sent to, saved one third of a tree. This newsletter is sent out 4 times a year. That is one and one third more tree that stays in our yard and that is just the printing for just this newsletter. Now think about all the office paper that is used and mail that is sent throughout the whole year. That is an enormous amount of paper!



Almost half the trees harvested in the U.S. go to papermaking. A large percentage of the trees the paper industry plants do not survive to maturity. They are not intended to so they thin with growth. The ones that are on plantations get treated with intense amount of pesticides and herbicides, petrochemicals that then seep into the ground. These plantations are not the same as the forests people can enjoy and visit that are being cut down. They can not sustain wildlife. So all the wildlife never get their environment back that was harvested.

Recycled paper also has gotten much better in its looks. There is barely a difference in appearance and durability. Recycled and tree-free paper actually have a higher opacity (which means it is harder to see through), which is great for double-sided printing. That also means thinner paper can be used. It becomes less expensive to buy and mailing costs can go down with lighter paper.

Just the simple things like using recycled paper, especially tissue paper since that will never be recycled, not printing unnecessary pages, emailing more, faxing less, printing double-sided, and reusing scrap paper add up to make a big difference. Also printing using the draft setting will extend the life of your ink. And if you do have to print, RECYCLE!



Alex Wieser

Sales/Marketing

Mid-WestGIS, Inc.

Information retrieved from <http://www.conservatree.com/>





Mid-West GIS

Professional Solutions - Affordable Pricing

The mission of Mid-West GIS is to provide top-quality GIS services at an affordable cost. The company will seek to provide these services in the timeliest manner and with an ongoing comprehensive quality control program to provide 100% customer satisfaction.

About The Company

Mid-West GIS will seek the most highly qualified personnel available in the area. The company will also ensure that our staff is fully trained in the most up-to-date software applications. Our staff will be on top of the technology advancements in the industry to ensure our clients are keeping up with these changes.

The company's principal officers see each contract as an agreement not between a business and its customers, but between partners that wish to create a close and mutually beneficial long-term relationship.

Planning

The foundation of any GIS project begins with successful planning. Mid-West GIS will take the necessary steps to create an implementation plan and ensure a cost effective project.

- Needs Assessment
- Custom Data Models
- Workflow Analysis
- Implementation Plans

Data Acquisition & Development

The accuracy and quality of source data is vital to the success of a GIS project. Mid-West GIS specializes in RTK GPS data collection as well as paper and digital data conversion.

- GIS Conversion/Data Migration Projects
- Real Time Kinematic RTK Data Collection
- Sign, Road, Bridge & Culvert Inventory
- Water, Wastewater, Electrical & Gas Mapping



The data for the map above was collected using a combination of Field Maps and GPS. The data collected includes Water Lines, Valves & Valve Boxes, Hydrants, and Water Meters.

Implementation

Mid-West GIS uses a structured approach to the implementation process and creates affordable and highly efficient solutions.

- 911 Addressing & Dispatch Applications
- Emergency Response Networks
- Customer Location, Tracking & Analyzing Applications
- Vehicle Routing, Fleet Optimization & Point to Point Routing

Mid-West GIS, Inc.

510 Maine St. Suite 510 Quincy, IL 62301

Phone: 217-222-7793

www.mid-westgis.com

For more information regarding Mid-West GIS products and services, contact us at 217-222-7793 or by email sales@mid-westgis.com.



Software & Web Solutions

Mid-West GIS specializes in web-based GIS development and enterprise level data management. Our staff can assist you with reliable solutions that offer data access from any location.

- Arc GIS Server Development
- Centralized GIS Repository & Off-site Backups
- Emergency Response Solutions
- Intranet Development & Reporting



911 Addressing

Data Maintenance & Support

GIS data maintenance is the key component to any GIS project. Our team can assist you with routine data maintenance or provide occasional GIS support.

- Increased Data Accuracy
- Reduced Costs & Overhead
- Standardized QA/QC Methodology
- Experienced Project Management

For more information regarding Mid-West GIS products and services, contact us at 217-222-7793 or by email sales@mid-westgis.com.



Sign Inventory

Consulting

Our experienced consultants follow a formal design process to identify the end-user's requirements. They compare the value of alternative options, define the detailed specifications of the database, and set up quality control procedures to meet your needs.

- Systems Integration Design
- Data Migration Planning
- Database Modeling

Training

The staff at Mid-West GIS has extensive experience with GIS software and new GIS/GPS technology. We can provide customized training that is tailored to the needs of your office.

- Customized GPS Training
- Arc GIS Training
- On-site/Off-site Training

Mid-West GIS, Inc.

510 Maine St. - Ste. 510 Quincy, IL 62301

Phone: 217-222-7793

www.mid-westgis.com

MEMBERSHIP REPORT

There are currently 53 counties with 200 paid members. Membership renewals are trickling in slowly. Please check your newsletter label and if it doesn't say exp. 2008 then your membership is due.

Thank you.

Respectfully submitted,
Gladys Smith
St. Clair County Assessor
MMA Membership Chairperson

GIS—Better Decisions through Modeling and Mapping Our World

Geographic information system (GIS) technology is an important and proven decision-making tool for governments to respond to challenges efficiently, enhance business functions, improve service delivery, and plan successfully for the future. By using ESRI's scalable family of ArcGIS® software, governments can unite information from many departments to create a common, map-based data display, analysis, and dissemination platform, enabling staff to visualize data in new ways. This geographic data can be used across all departments, in the field, and on the Internet, resulting in more comprehensive policies and a better informed and engaged community.



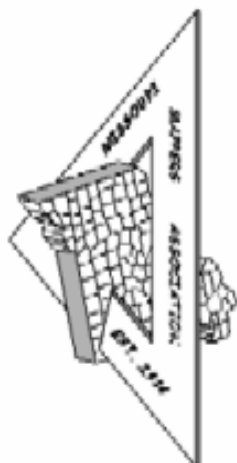
ESRI Philosophy

ESRI believes that better information makes for better decisions. Our reputation is built on contributing our technical knowledge, our special people, and our valuable experience to the collection, analysis, and communication of geographic information. Contact us today to learn how ESRI's GIS is helping to manage and improve government operations around the world.

1-800-447-9778

info@esri.com • www.esri.com

Copyright © 2005 ESRI. All rights reserved. The ESRI globe logo, ESRI, ArcGIS, www.esri.com, and @esri.com are trademarks, registered trademarks, or service marks of ESRI in the United States, the European Community, or certain other jurisdictions. Other companies and products mentioned herein are trademarks or registered trademarks of their respective trademark owners.



2007-2008 OUTSTANDING MAPPER OF THE YEAR APPLICATION

The "Outstanding Mapper of the Year" award is presented yearly at the Missouri Mappers Association annual convention. The award is designed to honor an individual who has displayed outstanding abilities in the mapping field. Nominees must be a current member of MMA, have been a member for at least one year, and be technically proficient in mapping techniques and standards. Nominations should explain why the nominee merits this award.

Name of Nominee: _____

Employer: _____

I believe _____ should be nominated for "Outstanding Mapper of the Year" because

(Continue on additional sheet if needed)

Signature: _____

Phone Number: _____

Email address: _____

Mail Application to: lisac@casscounty.com or

Lisa Chapman

Cass County GIS Department

102 E. Wall St.

Harrisonville, MO 64701



Since 1945

**Your One Stop Source for all your
GPS, Mapping, and Surveying Needs.**

ST. LOUIS

36 Kirkham Industrial
St. Louis, MO 63119
(800) 489-2282
(314) 968-2282

KANSAS CITY

918 N. Scott Avenue
Belton, MO 64012
(800) 489-3383
(816) 331-3383



Sales • Service • Repairs • Rentals • Training • Financing



Pixel perfect.

Spectacular aerial imagery is only one offering of our high quality geospatial solutions. Whether you are engineering for growth and progress or updating existing GIS data, MJ Harden gives you the many advantages of the best geospatial technologies available.

- ▶ *High-Resolution, Multispectral Digital Aerial Imaging*
- ▶ *Advanced LIDAR Data Capture and Processing*
- ▶ *Planimetric and Topographic Mapping*
- ▶ *Digital Orthophoto Production*
- ▶ *GeoEye™ Satellite Imagery*
- ▶ *Remote Sensing*
- ▶ *GIS Consulting, Development and Implementation*

Put our knowledge and experience to work for you. Look to MJ Harden as your full-service resource for all things geospatial. To get the full story, contact your MJ Harden representative or visit: www.mjharden.com.

MJ Harden™
A  **GeoEye company**

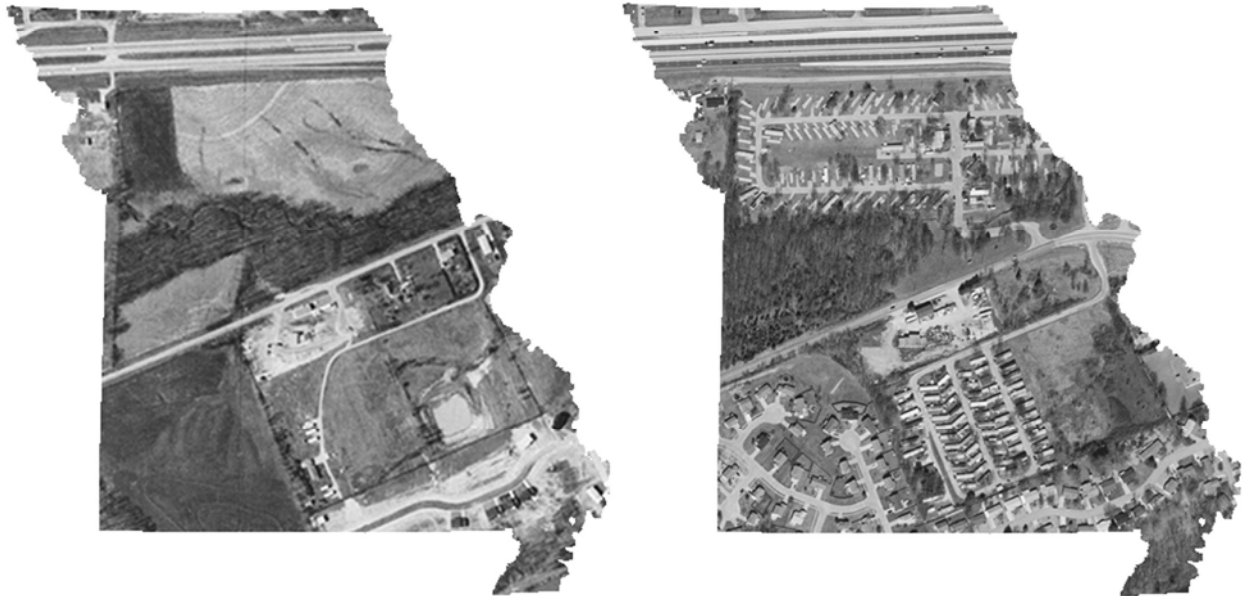
5700 Broadmoor Street, Suite 800
Mission, Kansas 66202
913.981.9600 phone 913.981.9602 fax

PHOTOGRAMMETRY SERVICES

Randy Mayden 913.981.9515
Don Cleveland 913.981.9530
Mike Kallas 913.981.9525

Do You Remember What Missouri Looked Like 50 Years Ago?

We do, and we have the pictures to prove it. For over 50 years, Surdex has been mapping Missouri. We've photographed every inch of this great state many times. So if you are looking for a complete county-wide project, or a small site for development, Surdex has it covered!



Digital Plan / Topo Mapping
Digital Orthophotography
GPS Control Surveys
Aerial Photography
GIS Services
LIDAR

Contact us at: 636-532-3427

520 Spirit of St. Louis Blvd., Chesterfield, MO 63005 www.surdex.com

Historical Committee Report

The historical committee has been gathering information to be included for this year's report. If you have anything you would like included, please send it to myself or Frank Adam. Thank you!

Respectfully submitted,

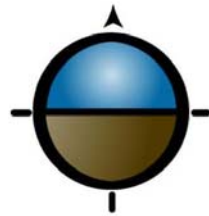
Tim Kean

Historical Committee Chairperson

200 N. Main St, Suite 126

Rolla, MO 65401

tim.kean@phelpscounty.org



GRE
GREAT RIVER
ENGINEERING



- Full GIS Implementation
- Data Creation, Conversion, & Manipulation
- E911 Address Creation & Standardization
- Utility Mapping
- Land Use & Parcel Mapping
- Aerial Photo Flight Coordination
- Custom Applications, Maps, & Reports
- Professional Land Surveying
- Civil Engineering

2826 S. Ingram Mill Rd
Springfield, MO 65804
www.greatrivereng.com
Phone: 417-886-7171 Fax: 417-886-7591



Midland GIS Solutions

Mapping Missouri Since 1973

Check the facts before hiring your GIS provider!

- Who is Missouri's Leading GIS Provider?
- Who has provided reliable county mapping services since state-wide mandatory reassessment?
- Who uses Missouri State Tax Commission mapping guidelines?
- Who uses survey research and protocols for mapping accuracy on **every project**?
- Who provides prompt and courteous service **after** the project is completed?
- Who is the right choice for Missouri Counties and Communities?

The Answer is Midland GIS Solutions!

"Midland is truly one of the best companies when it comes to **getting the job done right** in a timely manner. What we like most about Midland GIS Solutions is their **caring attitude** on each project they work for on us. **What a great group of professionals!**"

- Ronnie Simmons, Assessor, New Madrid County



Owned and Operated by Professional Land Surveyors.

501 N. Market
Maryville, MO 64468

www.midlandgis.com
Toll Free 877-375-8633



MISSOURI MAPPERS ASSOCIATION TREASURER'S REPORT

April 9, 2008

Beginning Balance 2/19/2008 **\$14,741.61**

Receipts

Dues \$100.00

Interest Earned \$.10

Total Receipts \$100.10

Beginning Balance + Receipts **\$14,841.71**

Disbursements

Mid-West GIS \$319.52

(Newsletter Postage & Copies)

West Central Chapter \$25.00

(Dues)

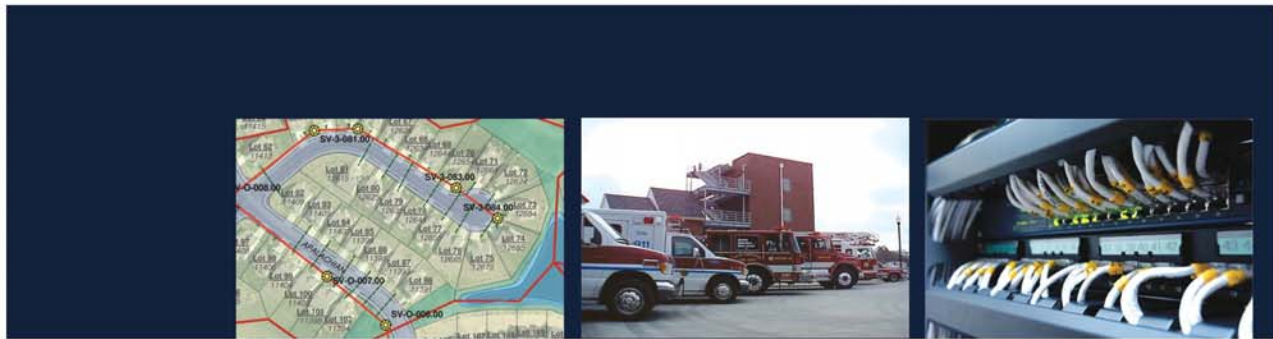
Ryon Gross \$400.00

(Yearly Website Maint.)

Total Disbursements \$744.52

Ending Balance 2/19/2008 **\$14,097.19**

GIS Solutions that Balance Experience and Imagination



Industry leading know-how and technology

A leader in providing GIS solutions to municipal, county, and state government. With the successful implementation of over 150 projects, and the development and hosting of over 70 ArcIMS based websites, The Schneider Corporation represents the cutting-edge of GIS and data warehousing technology. Contact us to put our experience to work for you.

land records management
public safety
public works
product development
website development/hosting



www.schneidercorp.com
866.973.7100



Beware of the "quick fix" GIS solution.

Too many GIS providers are focused on a "quick fix" GIS solution - one that leaves you with a minimal project for maximum cost. What makes Sidwell different? Our team of GIS professionals always takes the time to:

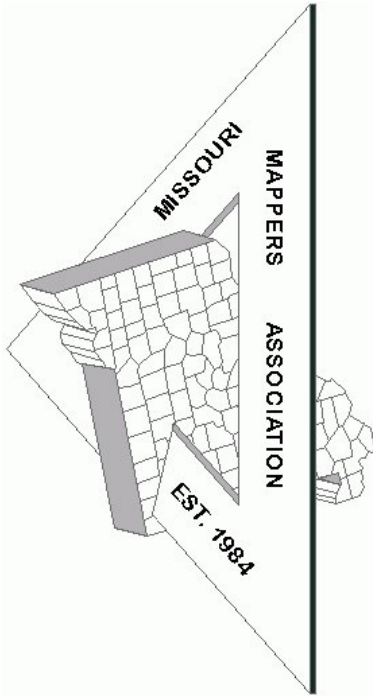
- *Listen first*
- *Identify your crucial needs*
- *Recommend logical & cost-effective solutions*
- *Support your project efforts*

Experience the Sidwell difference. Contact us today.



Brian Baker • 365 Balmoral Castle Drive • Wentzville, Missouri 63385 • 636.541.2831 • bbaker@sidwellco.com
675 Sidwell Court • St. Charles, Illinois 60174 • 877.SIDWELL • www.sidwellco.com

Missouri Mappers Association
P.O. Box 1692
JEFFERSON CITY, MO 65102



We have plenty of ad space available for the upcoming issues. Please contact Shane McDermott at shane@mid-westgis.com for more information. Rates are as follows:

Business Card	3 Issues - \$25
1/4 Page	3 Issues - \$100
1/2 Page	\$50 per Issue
Full Page	\$100 Per Issue

Be a **Newsletter Sponsor** with a 1/4 page advertisement on the front page of one issue: \$250 Per Issue

ARTICLE AND NEWS SUBMISSIONS

Article and news submissions for topics that cover issues that are important to all of us can be sent via email or snail-mail to the following address for consideration for future publications.

Shane C. McDermott, GISP
Mid-West GIS, Inc.
510 Maine St. Suite 510
Quincy, IL 62301
shane@mid-westgis.com
www.mid-westgis.com

Missouri Mappers Association
P.O. Box 1692
Jefferson City, Missouri 65102

