



MISSOURI MAPPERS ASSOCIATION

VOLUME 21, ISSUE 2

APRIL 2005

LETTER FROM THE PRESIDENT, KIM SWISHER

Buenos Dias Mappers! Is it just me, or does it seem like Winter is a little longer each year? Thank goodness the trees are budding, the flowers are blooming, the days are longer, my eyes are watering, my nose is stuffed up and I can't stop sneezing...I LOVE SPRING!

On to business. The agenda for this year's Conference is almost set in stone. I think we'll have a very good cross-section of topics, speakers and workshops. Pen and ink... GIS... E-911... Surveying... Utilities... Grant Writing... We've tried to design a program to appeal to a wider base of attendees and membership. Please help us get the word out to anyone you think might be interested in attending.

I want to encourage everyone to submit their Conference Registration as soon as possible. We'll be ordering polo shirts as part of your registration packet, and we need plenty of time for the embroidery. Don't forget to turn in your nominations for Mapper and Boss of the Year.

We're planning a BBQ for workshop attendees and early arrivals on Tuesday night. If you're interested in lending a hand, please

contact the official MMA catering crew, Randy Lewis or Alice Lee.

Congratulations to Alice Lee (Jefferson County) and Lisa Chapman (Cass County), the recipients of our first two scholarships for the IAAO 600 class and exam. They will be sitting for the PMM exam and I'm looking forward to introducing them as our newest PMM's. Way to go ladies!

House Bill 349 and Senate Bill 210 are progressing nicely. If you're interested in receiving a copy of the weekly status report, please send me your email address and I'll add you to the list. Or you can track them online at

www.moga.state.mo.us.

The educational brochure for the legislature sort of fell apart when Steve Daw left, but we plan on re-approaching it if the Bills don't pass this session.

Our next Board meeting is June 4th at the Phelps County Courthouse. This will be the final meeting before the Conference. If you have any suggestions or comments, speak up soon. Anyone who's ever been involved in planning a Conference, can tell you

it is definitely not a piece of cake. Shannon and the other committee members have done an amazing job. But we could still use a few volunteers for decorating and other last minute emergencies.

As a final note, one of our members will be unable to attend the Conference, so I won't be able to thank her in person for her hard work this year. Our membership drive has been very successful and it's due in no small part to the Membership Committee chair. She's been a steadfast supporter and active member of MMA for many years. Have a great time at your son's wedding Gladys, we'll miss you. You're a peach!

See Y'all at the Lake for our "2005 Mapping Fiesta"!

Respectfully submitted

Kim Swisher

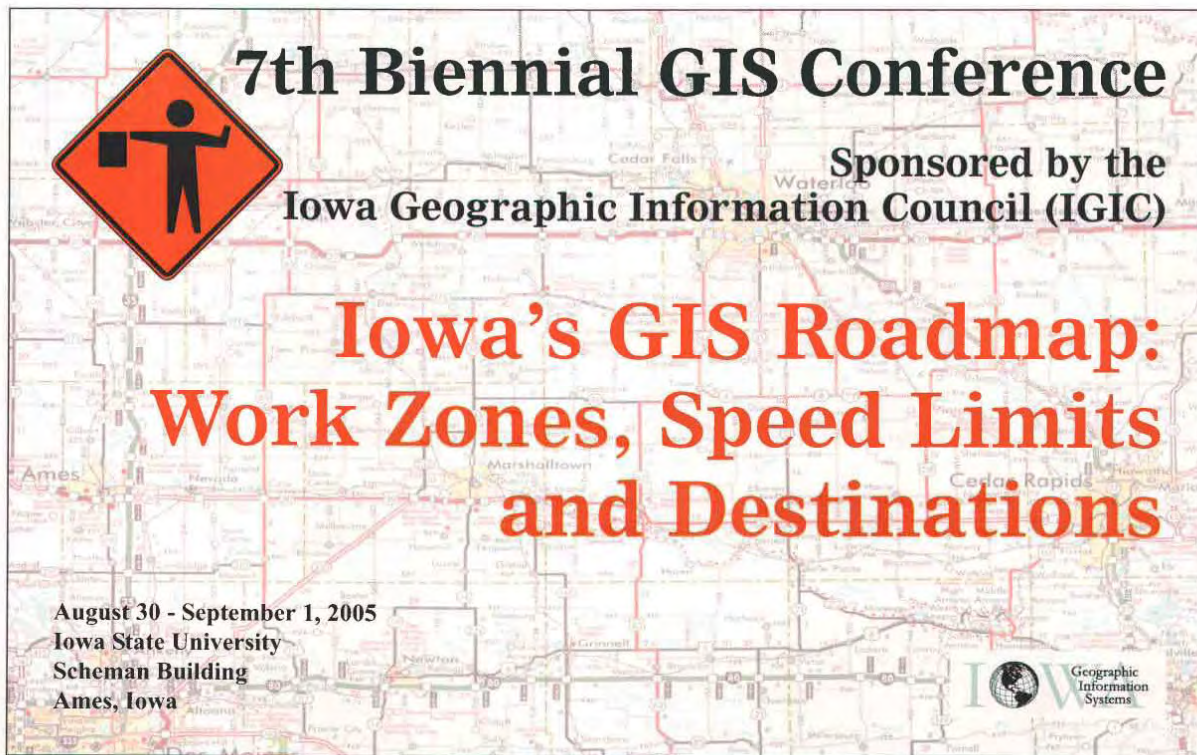
President



INSIDE THIS ISSUE:

CONFERENCE INFO	3
GIS IN NEWS	4-5
COMMITTEE REPORTS	7-8
AWARD INFO	12
TREASURERS REPORT	15
AWARD SUBMISSIONS	18
MO GIS DATA	21

Are you ready for the 2005 MMA Annual Conference? Check out page 3 for more detailed information, and we will see you at the lake.



7th Biennial GIS Conference

Sponsored by the
Iowa Geographic Information Council (IGIC)

**Iowa's GIS Roadmap:
Work Zones, Speed Limits
and Destinations**

August 30 - September 1, 2005
Iowa State University
Scheman Building
Ames, Iowa

The poster features a map of Iowa in the background. In the top left corner, there is a red diamond-shaped sign with a black silhouette of a person carrying a briefcase. In the bottom right corner, there is a logo for the Iowa Geographic Information Systems, which includes a globe and the text "IOWA Geographic Information Systems".

A few funny photo's submitted by members

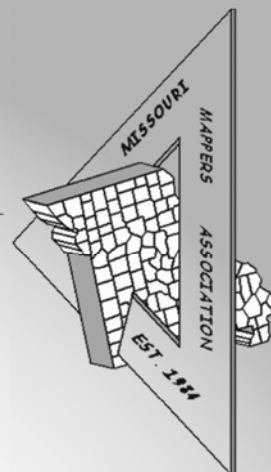
If you have anything to submit, send it to shanem@psba.com





2005

Missouri Mappers Association 21st Annual Conference



TOPICS INCLUDE:

- Andy Wagner, The City of Maryland Heights, "Integration of Asset Management and GIS at the Municipal Level"
- Mark DUEWELL, Missouri Spatial Data Information Service, "Grant Writing Techniques for GIS Development"
- Mohamed Kacem, GeoDecisions, "The Conversion and Distribution of Parcel Data at Albemarle County, Virginia"
- Stephen Marsh, Jackson County, "Retracing the Steps of Moving from Pen and Ink Mapping to GIS at Jackson County"
- Apex, "Survey Module in Apex IV™ Software"
- Jerry Bartels, Seiler Instrument, "Introductory Workshop: Drawing and Plotting in AutoDesk Map 2006" and "Using Trimble Handhelds to Map the Resort at Port Arrowhead"
- Heather Milton, ESRI, "Workshop: ArcGIS 9.1 for the Intermediate GIS User"
- The Sidwell Company, "Workshop: Lines, Tangents, Bearings...Oh My!"
- Tony Spicci, "The State of Missouri's Efforts in the National States Geographic Information Council"

For more info, contact Shannon Armstrong at sarmstrong@sidwellco.com or 630.549.1000

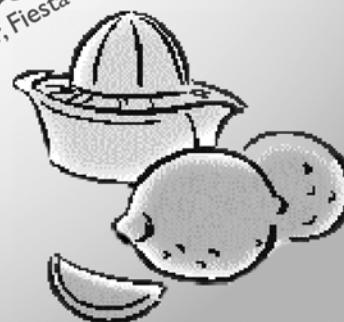
Join us at these social events:

Tuesday, Aug 2
Cookin' with the MMA Board



Wednesday, Aug 3
Vendor Reception, Lake of the Ozarks Cruise

Thursday, Aug 4
Mexican Dinner, Fiesta on the Patio



August 2-5, 2005
Lake of the Ozarks, MO
The Resort at Port Arrowhead
(formerly Holiday Inn Sunspree Resort)

ESRI Homeland Security GIS Summit—The Key to Intelligent Collaboration

April 15, 2005

Company: [ESRI](#)

Location: Redlands, CA, United States of America

Redlands, California—Decision makers from the public and private sectors will gather at the ESRI Homeland Security GIS Summit to exchange practical solutions for homeland security, crisis management and business continuity. The summit will take place at the Adams Mark Hotel in Denver, Colorado, September 12–14, 2005.

GIS technology provides the foundation upon which many different types and sizes of organizations can create, manage, analyze, and exchange geographic information for intelligent collaboration. This conference will address key issues in emergency management, health care delivery, transportation, distribution, communications, utilities, law enforcement, agriculture, manufacturing, banking, and retail services.

“Building and accelerating informational capabilities for homeland security is an important focus for managers and decision makers,” says Jack Dangermond, ESRI president. “Fostering partnerships among public and private sector organizations engaged in homeland security is critical to protecting a nation's physical and social infrastructure.”

Improving access to and use of spatially relevant information at exactly the right time provides a common operational picture that supports effective action. “Simply improving the flow and availability of spatially relevant information can lead to improved response and recovery efforts,” says Russ Johnson, ESRI manager of Public Safety and Homeland Security.

The ESRI Homeland Security GIS Summit provides a forum for business and government leaders and IT professionals to learn and share best practices in homeland security. Attendees can learn from other professionals, get connected to the most current solutions, and discover how ESRI and its partners are serving homeland security. Those with responsibilities for worker safety, emergency budgeting and planning, policy development, private/public partnerships, data and information systems across governmental agencies, nongovernmental organizations, and private industry will benefit from the summit's sessions, discussions, and demonstrations.

For more information about the summit, visit <http://www.esri.com/hssummit>. More information about GIS and homeland security is available at <http://www.esri.com/homelandsecurity>.

More GIS In The News...

This week, the [Amber Alert Web Portal Consortium](#) (the Consortium) announced a pilot program to broadcast Amber Alerts to [International Justice & Public Safety Information Sharing Network](#) (NLETS). In the pilot program, all Amber Alert messages concerning the abduction of a child or children will be distributed through the NLETS network, providing immediate, unfettered access to all federal and state justice agencies across the U.S. and Canada.

In the pilot program, the Consortium will distribute all alerts through NLETS as a foremost priority, insuring that law enforcement agencies are the very first to receive these real-time alerts. In most cases, AMBER Alert messages are activated by the local law enforcement agencies responsible for abduction investigations in the field. Using state-of-the-art geospatial technology (GIS Technology), made possible by ESRI, NLETS will allow both interstate and intrastate law enforcement agencies to anticipate an abductor's precise travel progress so that an apprehension plan can be devised that will allow for the safe return of the child.

In today's tight budget environment, GIS decision makers are increasingly being asked to do more with less. Since its introduction in 1998, ImageAmerica's low-cost, high resolution digital ortho solution has been allowing customers nationwide to do just that. With industry leading prices, quick, guaranteed delivery times, high positional accuracy and outstanding customer service, ImageAmerica is quickly becoming the digital ortho solution of choice.



ImageAmerica®



Accurate, High Resolution Digital Ortho

www.image-america.com - 800-275-0133

Worried about getting all flash and no substance with your GIS?



At Sidwell, we encourage you to look behind the curtain.

Everyone's heard the phrase "Pay no attention to that man behind the curtain!" Some companies sell GIS using flash and sizzle, and hope you'll overlook the fact that their solutions have no substance, in every area from their experience, to their staff, to their reputation.

At Sidwell, we welcome our clients to visit us, see our facilities, meet our staff and call our customers. We take great pride in our ability to provide our clients with GIS solutions of substance that will serve their needs both now and in the future. To see what's behind our curtain, contact us today.



675 Sidwell Court • St. Charles, Illinois 60174 • 630.549.1000 • www.sidwellco.com

Annual Meeting Committee Report

We are still working on firming up the agenda and are currently looking for a county level person working at a small county in Missouri to do a session about mapping and/or GIS that has not spoken before at the conference or someone from an electric cooperative to talk about working with other local entities to obtain and distribute data. I recently sent out letters to 80 Missouri businesses to obtain door prizes for the attendees. I am currently working with Seiler Instrument to help define the type of workshop that will be useful to and draw in a lot of attendees. The board is still deciding about the Tuesday night dinner event, we might end up moving it indoors at a VFW hall or local restaurant if their pricing is affordable. I was not happy with the condition of the picnic shelter in the state park. Three new vendors have expressed interest in exhibiting, this includes Apex, GeoDecisions and Marceline Mapping. I plan on sending out conference and exhibitor registration materials in May. I would like to also have this information posted on the MMA website so I can send marketing material to the municipalities and electric cooperatives with a list of topics and information on where to download registration forms on the website.

Aerial Services, Inc.

Mapping Your World® since 1967



Geospatial Services Including:

- GIS Solutions
- Aerial Photography
- LIDAR
- County-wide Digital Orthos
- GPS Surveys-Ground & Airborne
- DEM/DTM Topographic Mapping
- Analytical Aerotriangulation
- Precision Scanning
- Data Conversion

Cedar Falls, Iowa

Toll Free: 877-ASI-4GIS

www.AerialServicesInc.com

PMM Committee Report

There are two Missouri Mappers Association members taking the PMM exam this year. The exam will be given on Saturday April 30th, and the results will be given at the annual meeting in August.

Good Luck with the exams!!

Committee Chairperson

Awards committee

Nominations for Mapper of the Year and Boss of the Year need to be made by June 1 in order for the awards to be ready for the Annual Meeting. If you have any nominations, please submit them before the deadline to ensure they are considered. Thank you.

Awards Committee

Membership Report

There are currently 244 paid and/or lifetime members. Membership year is from the annual meeting to annual meeting the following year, so remember to pay your dues to stay current and receive all of the newsletters.

Also, although you may not be attending the Missouri Mappers Association Annual Meeting, don't forget to send in your dues to remain a member in good standing.

Thank you,

Gladys Smith

Membership Chairperson

FOR YOUR COMPLETE MAPPING SERVICES



Bruce Harris
& Associates, Inc.

- GIS Services
- Tax Map Atlases
- Internet Mapping
- 911 Mapping
- Custom Mapping
- Photogrammetric Services
- Geodatabase Conversion
- Infrastructure Mapping

We Put Information In It's Place!

21 North River Street • Batavia, IL 60510

630.761.0951

Visit our website at www.bruceharris.com

National Maps in the news

- ***The National Map* could provide a net \$2.05 billion in present-day value of benefits, above and beyond the cost to develop and maintain the data-base** November 2004 All Federal agencies are charged with effective management of scarce capital assets to ensure that public resources are wisely invested. Adhering to this policy, USGS scientists embarked on a study to evaluate the net benefits to society of the USGS product: *The National Map*, and have recently published study results that analyzed overall costs and benefits associated with *The National Map*. USGS Circular 1271, "[A Cost-Benefit Analysis of The National Map](#)" (by David Halsing, Kevin Theissen, and Richard Bernknopf), describes methods used to determine the value of this type of unique product, elaborates on the results of the study, and defines the usefulness of this product, which provides the Nation with spatial map data that are current, integrated, consistent, complete, and more accessible than in previous formats. The scientists also report that this research methodology, using a simulation approach to evaluate information technology and spatial data investments, is promising for other similar applications. Circular 1271 is currently available online (see link above) and in hard copy by contacting 1-888-ASK-USGS. [Geospatial Solutions](#) magazine's feature article February 1, 2004, describes the cost-benefit analysis and provides additional details.

KUCERA INTERNATIONAL INC.

Providing high quality, cost-effective aerial mapping services to Missouri counties and cities.

Aerial Photography

Ground and Airborne GPS/IMU

LIDAR

Digital Terrain/Elevation Models

Digital Orthophotography

Digital Planimetry/Topography

Cadastral Mapping

Data Conversion

ORTHOSCAPE® 3D GIS



Kucera International Inc. is a leading provider of aerial mapping and related geomatic services with over 50 years of experience and production offices located throughout the United States.

Kucera customers are served by a skilled staff of experienced professionals, including licensed/certified photogrammetrists, mappers, surveyors, geodesists, engineers, planners, and computer/GIS technicians. Our team works closely and cooperatively with each client to achieve optimal results and ensure time and cost efficiency.



Kucera Midwest

113 Birchwood Drive, Ballwin, MO 63011

Tel (636) 527-6206, Fax (636) 527-6209

k.swisher@kucerainternational.com, www.kucerainternational.com



Missouri's Proven GIS Data Provider

- ★ County Assessor's Mapping for over 20 years
- ★ Cadastral Mapping for over 30 years
- ★ GIS Development in 30 Counties in Missouri
- ★ Over 60 GIS Projects in Missouri

- | | |
|--------------------------|-------------------------------|
| ▶ County Government | ▶ GIS Development |
| ▶ Municipal Government | ▶ Cadastral Mapping |
| ▶ Private Business | ▶ Utility Mapping |
| ▶ Regional Associations | ▶ Parcel Data Conversion |
| ▶ Educational Facilities | ▶ Needs Assessments |
| ▶ Institutions | ▶ Grant Writing |
| ▶ Transportation | ▶ GPS Services |
| ▶ Homeland Security | ▶ Professional Land Surveying |



... delivering a world of management information!



Midland GIS Solutions

501 N Market
Maryville, MO 64468

(660) 562-0050

www.midlandgis.com

113 Greystone Lane
Sunrise Beach, MO 65079

(573) 374-0885

info@midlandgis.com

Toll Free: 877-375-8633



PROMAP

GEOGRAPHIC INFORMATION SYSTEMS

Missouri Counties' Leader in GIS!

In motorcycle races, starts are crucial, especially through the first turn. In GIS, starts are just as critical. ProMap has over 13 years of experience to give you the best start and the commitment to ensure the best finish.

ProMap can offer you the best in...

- Enhanced GIS Project Planning/Implementation
- Accurate Data Conversion
- Innovative GIS Software & Applications
- GIS Education & Training
- WebGIS (Online Solutions)
- Unsurpassed Client & System Support



Go with the leader!
Best Start. Best Finish.

ProMap's Winning Stats...

- Over 250 GIS Projects (with new and existing clients)
- Over 50 WebGIS clients (nationally recognized online data experience)
- Over 100 PMCGIS software clients (including AgLand Valuation Processing)

ProMap's Leadership Skills...

- Industry-Leading Ongoing Client Support (ProMap's support doesn't end with a signature on a contract)
- Company-Wide Commitment to Honesty and Integrity Toward Our Clients

ProMap Corporation
1531 Airport Road, Suite 2, Ames, IA, 50010-8210, Phone: (515) 233-3311
www.promap.com, webgishome.promap.com

MMA Annual Golf Tournament

August 3rd @ 11:00

Entry Form: If you do not have a team just list your name and we will pair you with one.

Player:_____

Player:_____

Player:_____

Player:_____

Make Checks payable to : Missouri Mappers Association

Send checks and entry form to: Jim Kyle

26302 St. Hwy 413

Galena, MO 65656

Please submit registration by June 15th

Directions to golf course: From the Resort at Port Arrowhead (formerly the Sunspree Resort) turn right out of the parking lot back to Hwy 54. Turn right on 54 towards town and go to the first stop light, Hwy 42, and turn left. Go a quarter of a mile and the course is on your left.

6th Annual MMA Annual Golf Tournament

Bear Creek Valley Golf Course

August 3rd

Starting time: 11:00 / Shotgun start

Cost: \$44.50 per person / includes green fees, carts and range balls.

Prizes will be awarded that evening at the exhibitors social.

Team prizes

Putting contest

Closest to the hole

Longest drive

This course is very challenging so bring lots of golf balls, but we will have a great time on a beautiful course. Get your teams together and send in your registration today.

We are again looking for donated prizes this year. So if you are willing to provide a prize, please let me know. The Wal-Mart gift certificates worked great last year. Call me and let me know if you can donate.

Alcohol is allowed on the course but must be purchased from the pro shop. No coolers allowed. Due to the cost of the tournament, lunch will be on your own.

Jim Kyle - 417-357-0363

Doewiggler67@wmconnect.com

Poepping, Stone, Bach & Associates, Inc.
Architecture, Engineering, GIS Services, Planning & Surveying

Parcel Mapping

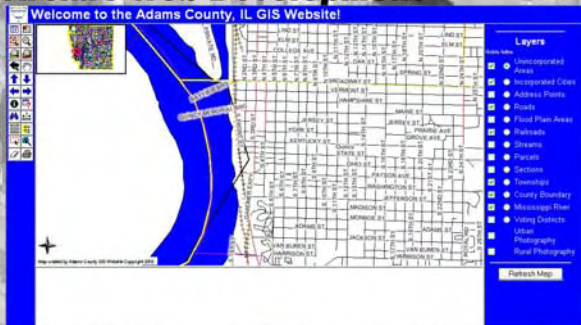


Utility Mapping



www.psba.com

ArcIMS Web Development



Land Use Development



Quincy Office
100 S 54th St.
Quincy, IL 62306
Phone 217/223-4605
Toll Free 877/423-4605
Fax 217/223-1546

Hannibal Office
U.S. Federal Building
801 Broadway, Suite 224
Hannibal, MO 63401
Phone 573-406-0541
Fax 573-406-0390

Keokuk Office
3523 Main St.
Keokuk, IA 52632
Phone 319/524-8730
Toll Free 800/249-5869
Fax 319/524-7720

email - shanem@psba.com
web- www.psba.com

TREASURER'S REPORT

Treasurers Report February 28, 2005

Beginning Balance 12/31/2004 \$15,036.81

Receipts

Dues

Conference Fees

Education

Exhibitor Fees

Golf Tournament

West Central Dues

Newsletter Ads \$50.00

Miscellaneous

Interest Earned \$2.53

Total Receipts \$52.53

Beginning Balance + Receipts \$15,089.34

Disbursements

Kim Swisher - Certificates \$150.12

Kim Swisher - Postage \$29.05

State of MO DNR - Ann. Mtg. \$40.00

MAA (Lisa Chapman Tuition) \$425.00

MAA (Alice Lee Tuition) \$425.00

Monthly Service Charge \$1.20

PSBA - Newsletter Costs \$230.91

Total Disbursements \$1,301.28

Balance February 28, 2005 \$13,788.06

midamerica **gis** consortium
announces the

10th
biennial



MIDAMERICA GIS SYMPOSIUM

April 23 - 27, 2006

Westin Crown Center - Kansas City, Missouri

sharing knowledge strengthening communities facilitating communication

information at:

magicweb.kgs.ku.edu

save the date

Publication Committee Report

We will print approximately 270 Newsletters to mail to members and also to those companies that have been kind enough to advertise in our newsletter. At this point we have 12 advertisers committed for this edition, which will bring in about \$663 to cover the cost of the newsletter, as well as the rest going into the general MMA fund.

Newsletters will be available at the Annual Meeting in the Poepping, Stone, Bach & Associates booth.

I am still looking for submissions of stories, pictures, or whatever else you would like to see in the newsletter. We have been working hard to improve the quality of the newsletter over the past few years. We hope you enjoy each and every issue.

GIS For a Better World



ESRI has been the world leader in geographic information system (GIS) software for over 30 years. ESRI offers innovative solutions that will help you create, visualize, analyze, and present information better and more clearly. Organizations around the world, as well as local, state, and federal government agencies, use ESRI GIS software to make smart and timely decisions. ESRI offers GIS solutions to help you unlock the spatial component of your valuable data.



Find out how GIS can help your organization.
www.esri.com • 1-800-447-9778 • info@esri.com

OUTSTANDING MAPPER OF THE YEAR APPLICATION

The "Outstanding Mapper of the Year" award is presented yearly at the MMA Annual Meeting. It is presented to honor an individual who has displayed outstanding abilities in the cadastral mapping field. Nominees should be a current member in good standing, have been a member for at least one year, have base knowledge of mapping, map management and be technically proficient in mapping techniques and standards. Nominations should be brief and explain why the nominee merits the "Outstanding Mapper of the Year" award. The Awards Committee will review the applications and make recommendations to the MMA Executive Board. Nominations will be accepted through June 1, 2005.

NAME OF NOMINEE: _____

EMPLOYER: _____

EMPLOYER'S ADDRESS: _____

PHONE: _____

I believe _____ should be nominated for
Outstanding Mapper of the Year because _____

(Continue on additional sheet if needed)

SIGNATURE: _____

PHONE: _____

ADDRESS: _____

Mail applications to: Marti Suiter, PMM
Hickory County Assessor's Office
PO Box 97
Hermitage, MO 65668
Phone: 417-745-6346 Fax: 417-745-6715

OUTSTANDING BOSS OF THE YEAR APPLICATION

The "Outstanding Boss of the Year" award is presented at the MMA Annual Meeting. It is presented to honor the "Top Boss" who has displayed efforts "above and beyond" in dealing with the mapping department and should not be limited to leadership, management & people skills. Nominees should be a current member in good standing, have been a member for at least one year, and should be planning on attending the annual meeting. Nominations should be brief and explain why the nominee merits the "Outstanding Boss of the Year" award. The Awards Committee will review the applications and make recommendations to the MMA Executive Board. Nominations will be accepted through June 1, 2005.

NAME OF NOMINEE: _____

COMPANY: _____

COMPANY ADDRESS: _____

COMPANY PHONE: _____

I believe _____ should be nominated for
Outstanding Boss of the Year because _____

(Continue on additional sheet if needed)

SIGNATURE: _____

PHONE: _____

ADDRESS: _____

Mail applications to: Marti Suiter, PMM
Hickory County Assessor's Office
PO Box 97
Hermitage, MO 65668
Phone: 417-745-6346 Fax: 417-745-6715

Do You Remember What Missouri Looked Like 50 Years Ago?

We do, and we have the pictures to prove it. For over 50 years, Surdex has been mapping Missouri. We've photographed every inch of this great state many times. So if you are looking for a complete county-wide project, or a small site for development, Surdex has it covered!



Digital Plan / Topo Mapping
Digital Orthophotography
GPS Control Surveys
Aerial Photography
GIS Services
LIDAR

Contact us at: 636-532-3427

520 Spirit of St. Louis Blvd., Chesterfield, MO 63005 www.surdex.com

New data sets on MSDIS

<http://msdisweb.missouri.edu/>

Tuesday March 8th, 2005

There are two new datasets on MSDIS' FTP site: srpc and missile_silos. Data set descriptions:

missile_silos: This data set (shapefile format) contains names, locations, and land use control information of former Department of Defense Minuteman II Intercontinental Ballistic Missile (ICBM) sites.

srpc: This data set is a polygon coverage delineating the RPCs (Regional Planning Commissions) within the state of Missouri.

These datasets can be found at:

ftp://msdis.missouri.edu/pub/state/missile_silos.zip

<ftp://msdis.missouri.edu/pub/state/srpc.e00.gz>

The XML for these data sets can be found at <ftp://msdis.missouri.edu/pub/metadata/utm>

Tuesday March 1st, 2005

The USGS Missouri GAP analysis data is now available. The data and final report are compiled into a three CD-ROM set. Go to <http://msdisweb.missouri.edu/mogap.htm> to read more and get instructions on how to order your copy from MSDIS.

Monday February 14th, 2005

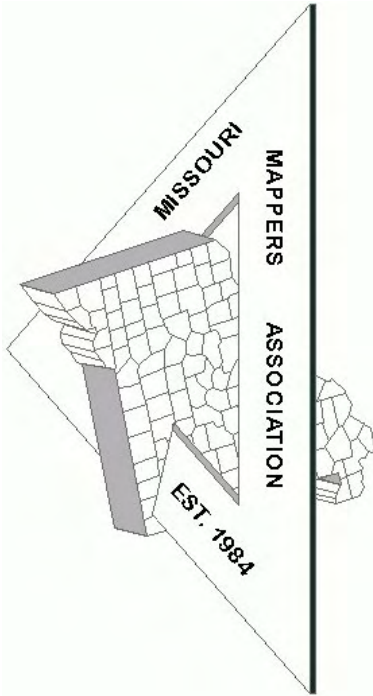
MODOT Roads - This data is provided as a service to our customers to ensure that the latest MDOT dataset is available to all MSDIS users as soon as it can be posted. Updates are provided to MSDIS on a monthly basis.

Click the following FTP link to download the "Raw" unparsed data:

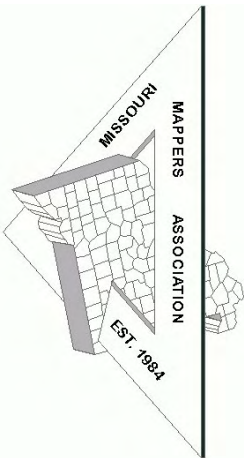
ftp://msdis.missouri.edu/pub/state/modot/st_modotrds0502.zip

For those customers wanting the data layer in a "parsed" format please visit the data theme or data search section of MSDIS where - at least annually - the dataset is parsed by Jim Harlan so that distinctions in road names may more readily be made by the typical user. Unfortunately - due to time constraints - this "parsing" can only be performed once per year.

Missouri Mappers Association
P.O. Box 1692
JEFFERSON CITY, MO 65102



Missouri Mappers Association
P.O. Box 1692
Jefferson City, Missouri 65102



We have plenty of ad space available for the upcoming issues. Please contact Shane McDermott at shanem@psba.com for more information. Rates are as follows:

Business Card	3 Issues - \$25
1/4 Page	3 Issues - \$100
1/2 Page	\$50 per Issue
Full Page	\$100 Per Issue

Be a **Newsletter Sponsor** with a 1/4 page advertisement on the front page of one issue: \$250 Per Issue

ARTICLE AND NEWS SUBMISSIONS

Article and news submissions for topics that cover issues that are important to all of us can be sent via email or snail-mail to the following address for consideration for future publications.

Shane C. McDermott, GISP
Poepping, Stone, Bach & Associates, Inc.
100 S. 54th Street
Quincy, IL 62301
217-223-4605
shanem@psba.com