

MMA News

Volume 33 Issue 2

June 2017

MMA Executive Committee

- **President—Carla Palmer**
- **President Elect—Brenda Dryer**
- **Secretary—Tonja Friend**
- **Treasurer—Lisa Perry**
- **Director 2015-2016—Sue Ann Stokes**
- **Director 2015-2017—James Theisen**
- **Immediate Past President—Melissa Johnson**

Inside this issue:

| | |
|---|-------|
| Committee Reports | 4 |
| Chapter Reports | 5-6 |
| Treasurers Report | 7 |
| Board Meeting Minutes | 9-10 |
| Cadastral Mapping Survey Standards | 11-14 |
| Conference Registration Info | 17-18 |
| Mapper of the Year Boss of the Year Application | 19-20 |

Letter from the President

Hello Missouri Mappers,

It has been my pleasure to be President of the Missouri Mappers Association this past year. I am proud to be associated with such a great group of people. Hopefully this next year we will grow in members and more members will get involved with the committee's, chapters and board.

I would like to thank the board members for all the help and support they have given me. You have all been very pleasant to work with and have been more than willing to help in anything I needed. I appreciate it. I hope it has been a productive year, but it sure has went fast.

I look forward to seeing everyone at the 2017 conference in August.

Sincerely,

Carla Palmer
President Missouri Mappers Association
Real Estate Supervisor
Jasper County Assessor's Office
302 S Main St
Carthage, Mo 64836
417-237-1042 work
417-437-4247 cell



***Conference is just 5 weeks away!!
Our door prize and give away drawings are on Thursday. Don't forget to bring your MMA Chapter baskets.***





Missouri Mappers Association 33rd Annual Conference



August 1st—4th, 2017
Capitol Plaza Hotel & Convention Center
Jefferson City, MO

Go "All In" With Your Mapping

Wednesday Workshops

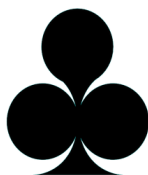
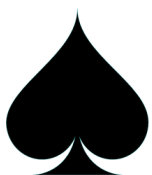
ArcGis Online, Mapping Law, Lifehacks:ArcGIS
Riparian Rights & Other Challenging Parcel Mapping Issues

Thursday Presentations

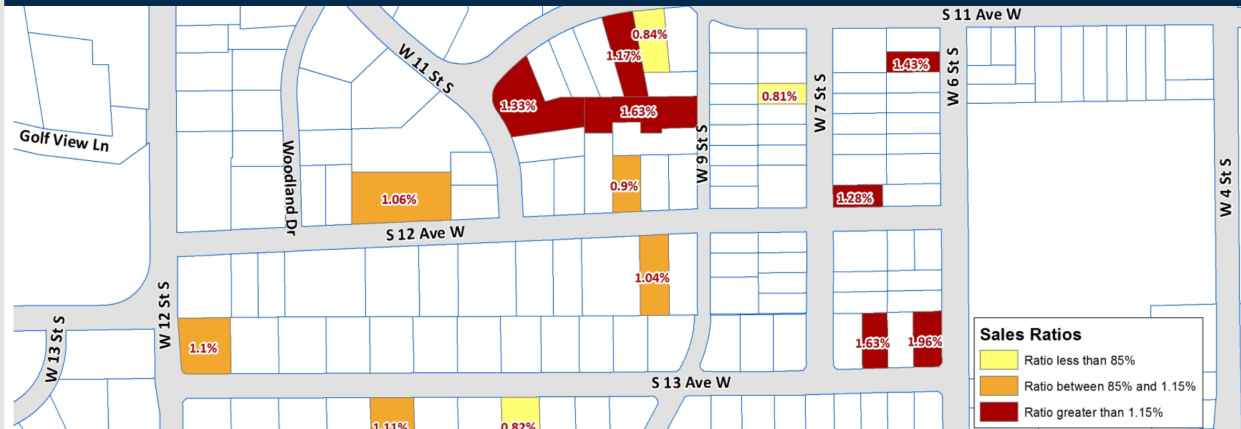
Influence Fabric, Mapping Census Bureau Survey Data,
There's Something 21st Century about the Old City Cemetery,
National Address Database Effort in Missouri,
Putting Together the Pieces—Missouri State-wide Parcel Layer,
IAAO CMS Designation

Tuesday-Welcome Reception
Wednesday-Vendor Reception & Mo State Pen Ghost Tour
Thursday— Dinner & Casino Night

Dues Only & Registration info on pages 16-18



GEOGRAPHIC INFORMATION SERVICES



Anderson Engineering, Inc. Geographic Information Services
can help you get the most out of your GIS and your data.

PARCEL MAPPING AND MAINTENANCE

Total cadastral data conversion from Mylar maps or annual parcel maintenance.

VISUALIZE CAMA DATA

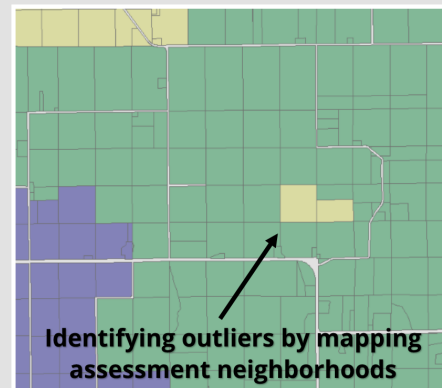
Bring your CAMA data to life by integrating that information into your GIS. Get the most out of your data by adding value to your GIS

GIS SOFTWARE TRAINING

Staff struggling with editing in GIS? We can help train them to work better and faster.

UAV AERIAL SERVICES

Quickly capture high-growth areas to help pick up improvements between flights. Easily integrates into existing GIS.



SERVICES:

- ♦ Geographic Information Systems
- ♦ Civil Engineering
- ♦ Land Surveying
- ♦ Geotechnical Services
- ♦ Construction Testing Labs
- ♦ Commercial Drone Services

Call us at our toll-free number, (866) 866-2741
or visit www.AndersonEngineeringInc.com for more information

Certification Committee Report

The Certification Committee is looking for anyone that might be interested in the PMM Certification test. If you have five years of cadastral mapping (or related) experience, have 30 hours of education in the mapping (or related) field, are a member of Missouri Mappers Association, and are currently working in the mapping field, you are eligible to take the PMM test. The mapping portion of the test can be taken either digitally or manually. If you are thinking about applying to take this test, please contact me at alee@jeffcomo.org or give me a call at 636-797-6274.

Respectfully submitted,
Alice Lee, PMM

Awards Committee Report

The Awards Committee will be looking for nominations for Mapper of the Year and Boss of the Year to be awarded at the Annual Meeting. Please send in nominations for your co-workers and bosses who are deserving of these awards. The nomination forms are in this issue of MMA News.

Respectfully submitted,
Alice Lee, PMM

Media Committee Report

If you are a current MMA Committee or Chapter Chair please remember to submit your reports for our newsletter. Like us on Facebook and be sure to check out our website.

Sue Ann Stokes
Media Committee Chair

Membership Committee Report

As of July 1, 2017, the membership of Missouri Mappers Association stands at 124. Hopefully, we will have most of those members at our Annual Meeting this year in Jefferson City. I personally am looking forward to a good meeting and hope to see everyone there.

Marti Suiter, PMM
Membership Chair

Annual Conference Committee Report

The Annual Conference Committee is in the final planning stages. Look for more information in this newsletter!!

Sue Ann Stokes
Annual Conference Committee Chair

W Central Chapter Report

The West Central Chapter of Missouri Mappers Association has not yet met this year. My hopes are to have a meeting before our Annual Meeting. I will be getting in touch with the West Central members to determine the best time for a meeting.

Marti Suiter, PMM
West Central Chapter Chair

NW Chapter Report

The MMA NW Chapter met on April 6th from 10am-noon at the Buchanan County, MO courthouse. Bryce Good, Buchanan County GIS Manager, discussed the GIS data sharing policies and GIS website subscription procedures he has incorporated at Buchanan County. Bryce provided an example “data sharing agreement” and “GIS data fee schedule” with everyone in attendance. Matt Sorensen, Sr. VP, of Midland GIS Solutions discussed how Midland GIS has handled GIS data sharing for several counties. We also had a discussion directly related to the Missouri Sunshine Law policies and how that directly relates to counties being able to charge or not charge for GIS data. Matt passed out the MMA membership application to all in attendance. Those in attendance included: Sullivan County Assessor and Mapper, Gentry County Assessor, Holt County Assessor, Mapper, and Clerk, Linn County Assessor, Mapper, and Clerk, Andrew County Assessor and Clerk.

Matt Sorensen
Sr. Vice President
Midland GIS Solutions

Missouri



State bird
Bluebird

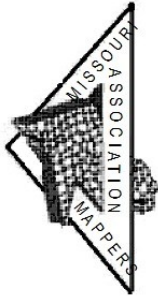


State floral emblem
White hawthorn blossom



State tree
Flowering dogwood

East Central Chapter Report



EAST CENTRAL CHAPTER

Missouri Mappers Association

6/23/2017



East Central Missouri Chapter Report

On April 19th the East Central Missouri Chapter of the Missouri Mappers Association held a quarterly chapter meeting at the office of the SEMO Regional Planning Commission in Perryville, Mo. Lunch was held at the local American Legion, and very much appreciated by the chapter. Stan Balsman and Jeremy Tanz gave a presentation on the tornado and path that hit Perryville Feb/2017.

Other things brought up during the meeting were;

- 1 Possible sponsoring of a GIS training class offered by Shannon white
- 2 Discussion about upcoming symposium
- 3 Disussion about requesting funds from MMA for symposium

Next meeting will be July 12, 2017.

Sincerely,

Richard E Kramer Sr.

Richard Kramer Sr.

President, Southeast Central Chapter MMA

Phone : 573-243-2300 ext.: 33

Email: rkramer@jacksonmo.org

Membership Officer's

Vice President: Teresa Kysor

Treasurer: Sarah Anderson

Secretary: Alice Lee

tkysor@CityofCapeGirardeau.org

snanderson@capecounty.us

alee@jeffcom.org

Bollinger, Butler, Cape Girardeau, Carter, Franklin, Dunklin, Gasconade, Iron, Jefferson, Lincoln, Madison, Mississippi, New Madrid, Pemiscot, Perry, Reynolds, Ripley, Scott, St Charles, St Francois, St Louis, St Louis City, Ste Genevieve, Stoddard, Warren, Washington, Wayne,

Treasurer's Report

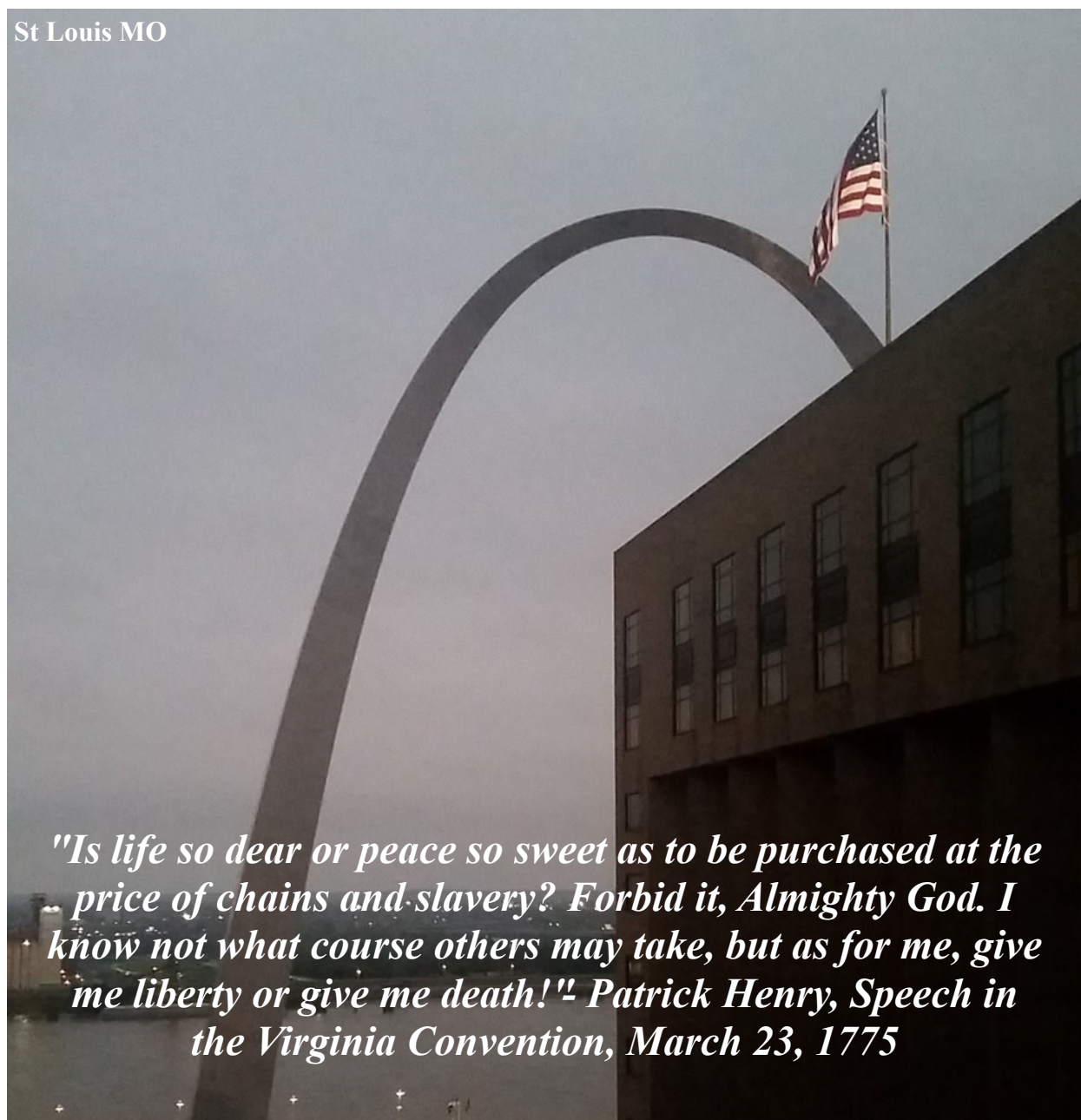
**Missouri Mappers Association
Annual Meeting
Treasurer's Report
May 22, 2017**

| | | |
|------------------------------------|--------------------|--------------------|
| Balance as of Feb. 15, 2017 | \$15,847.97 | |
| Receipts | | \$25,565.00 |
| Balance + Receipts | | \$41,412.97 |
| Disbursements | | \$1,082.12 |
| Annual Meeting | \$500.00 | |
| Awards | \$0.00 | |
| Postage | \$0.00 | |
| Historical | \$0.00 | |
| Education | \$86.16 | |
| Donations | \$0.00 | |
| Advertising | \$0.00 | |
| Misc. Expenses | \$12.00 | |
| Mileage | \$0.00 | |
| Info Tech | \$400.00 | |
| Conference Calls | \$83.96 | |
| Balance as of May 22, 2017 | | \$40,330.85 |



MMA Members Favorite Spots Around The Globe

St Louis MO



MMA Executive Board Meeting Minutes

Missouri Mappers Association

Executive Board of Directors Meeting

February 16, 2017

Meeting called to order at 10:05am by President Carla Palmer.

Those present on the board were President Carla Palmer, President Elect Brenda Dryer, Past President Melissa Johnson, 2nd Year Director Sue Ann Stokes, 1st Year Director James Theisen, Secretary Tonja Friend, and Treasurer Lisa Perry

Meeting minutes read from the October 19, 2016 meeting by Tonja Friend. Approved by Brenda Dryer, 2nd by Lisa Perry

Treasurer's report read by Lisa Perry. Approved by Tonja Friend, 2nd Katrina Williams

Committee Reports:

Annual Meeting: Sue Ann Stokes reported that the conference is going as scheduled. This year entertainment will be a casino. A ghost tour has been set up for the Missouri State Penitentiary. The cost will be \$26.00 and starts at 8pm – 10pm. Currently it will facilitate 35 people for this tour. The Waiver of Liability and admissions will be collected at the Penitentiary.

Education Committee Report: Katrina Williams had nothing to report at the time. Brenda Dryer proposed that the course fees for the upcoming IAAO 600 Course scheduled July 10th – 14th, 2017 be set for \$575 MMA Members \$600 for Non-Members. All board members were in agreement.

Historical Committee Report: Katrina Williams reported that everything has been scanned of record up to last year.

Media Committee Report: Sue Ann Stokes reported that she has had a few more advertisement to add to the newsletter but nothing new to add since the last meeting.

Legislation Committee Report: Currently vacant seat.

Membership Committee Report: Nothing to report at this time.

MMA Executive Board Meeting Minutes Cont.

Chapter Reports:

East Central Chapter: Richard Kramer Sr. reported that they had a meeting which was held January 18, 2017 with 4 members in attendance. The next meeting is scheduled for April 19th, 2017. They will be starting to work on the next Symposium.

South West Chapter: Tonja Friend had nothing to report at this time.

North West Chapter: Matt Sorenson reported there is a meeting scheduled for April 6, 2017 at Buchanan Court House. There will be training available on Data Sharing Policies. Matt also reported that he has sent out emails to counties in his chapter and has had a lot of positive responses.

Old Business:

Carla Palmer reported that Article VIII by Laws was approved for Exemption Status by the IRS.

New Business:

Sue Ann Stokes presented an issue from a phone call she received from a county needing legal advice from MMA. The County is having issues with two of their subdivisions plats. Two of their subdivision plats were recorded without being signed. It was recommended that they contact the Attorney for MAC - Travis Elliott. A suggestion was made to contact someone from the Missouri State. Another suggestion was made to see if the County has an attorney on retainer before they made any calls elsewhere.

A request has been made to the board about possible waivers or discounts for workshop speakers. A discussion was floored. Carla Palmer stated that there was a lot of content for the \$140.00 conference fee plus they are given a nice presentation gift. Katrina Williams made a suggestion to comp one night and to place a spot on the registration form if they are a speaker and they were attending the conference or just speaking. A comment was made that it would be hard to pick and choose who to give discounts to since there were limited rooms that are used for conference business. A vote was taken to not give a discount and give a presenters gift as has been done in the past. The board members voted unanimously.

Mark Duewell requested \$200.00 for the St Louis Metro Workshop that he will be presenting in May 2017. The funds would be used for breaks, food and drinks. A vote was tabled and passed unanimously to reimburse with a receipt up to \$200.00. It has been reported since this meeting that an \$80.00 receipt has been submitted and paid.

June is the next scheduled meeting. It was agreed that it will be announced at a later date.

Meeting Adjourned 10:50 am

Cadastral Mapping Survey Standards

**Title 2—DEPARTMENT OF
AGRICULTURE
Division 90—Weights, Measures and
Consumer Protection
Chapter 65—Cadastral Mapping Survey
Standards**

2 CSR 90-65.010 Application of Standards

PURPOSE: These minimum standards provide the digital mapper and recipient of digital cadastral parcel mapping products, a realistic guideline for the product delivered. This rule describes the digital cadastral mapping system components to which these minimum standards apply. Pursuant to HB28 the Land Survey Program was moved from Department of Natural Resources to Department of Agriculture in August 2013.

The minimum standards in this chapter apply to digital cadastral mapping as it relates to the location of the United States Public Land Survey System. Any map designed and used to reflect legal property descriptions or boundaries for use in a digital cadastral mapping system shall comply with these rules unless otherwise specified in writing. It is not the intention that these minimum standards address the particular requirements of assessment mapping included in the rulemaking authority of the Missouri State Tax Commission. The intention is to work in conjunction with commission authority.

AUTHORITY: section 60.670, RSMo 2016. Original rule filed Dec. 1, 2016, effective June 30, 2017.*

**Original authority: 60.670, RSMo 2010, amended 2013.*

2 CSR 90-65.020 Organization and Description

PURPOSE: This rule describes the scope, mission, and goals of the Cadastral Mapping Survey Standards.

- (1) Scope—This standard describes digital cadastral mapping system components, content, design, and creation.
- (2) Mission—To provide a standard for the definition and structure of digital cadastral data in order to facilitate data compatibility, and to protect and enhance the investments in digital cadastral data at all levels of government and the private sector.
- (3) Goals—
 - (A) To provide common definitions for cadastral information found in public records, used to create the digital cadastre;
 - (B) To resolve discrepancies related to the use of homonyms and synonyms in land record systems, to minimize duplication within and among those systems;
 - (C) To provide guidance and direction for land records, mapping, and land surveying professionals on standardized attribute values and definitions, to improve land records creation, management; and
 - (D) To use participatory involvement in the standard development to reach out to organizations to encourage broadly based application of the standard.

AUTHORITY: section 60.670, RSMo 2016. Original rule filed Dec. 1, 2016, effective June 30, 2017.*

**Original authority: 60.670, RSMo 2010, amended 2013.*

2 CSR 90-65.030 Definitions

PURPOSE: This rule defines the terms as used in this standard.

- (1) Cadastral Data—Source information used to delineate the geographic extent, quantity, and dimensions of cadastral parcels. Source information includes the United States Public Land Survey System (PLSS), subdivision plats, land surveys, real estate conveyances, right-of-way plans, etc.
- (2) Cadastral Parcel Mapping—The delineated identification of all real property parcels. The cadastral map is based upon the United States Public Land Survey System (PLSS). For cadastral parcel maps the position of the legal framework is derived from the PLSS, existing tax maps, and tax database property descriptions, recorded deeds, recorded surveys, and recorded subdivision plats.

Cadastral Mapping Survey Standards Cont.

- (3) Digital Cadastral Parcel Mapping—Encompasses the concepts of automated mapping, graphic display and output, data analysis, and database management as pertains to cadastral parcel mapping. Digital cadastral parcel mapping systems consist of hardware, software, data, people, organizations, and institutional arrangements for collecting, storing, analyzing, and disseminating information about the location and areas of parcels and the United States Public Land Survey System.
- (4) Digital Section Vertices—The points on a digital cadastral map that define the PLSS lines and corners.
- (5) Metadata—Information that describes specific details about a dataset. Metadata for geographic information may include the source of the data, its creation date and format, its projection scale, resolution, and accuracy.
- (6) Metes and Bounds—Describe the limits of a land parcel by reference to courses and distances around a tract and by reference to natural and artificial monuments of record.
- (7) Missouri State Plane Coordinate System—The system of plane coordinates that have been established by the National Oceanic Survey/National Geodetic Survey, or its successors, for defining and stating the geodetic positions or locations of points on the surface of the earth within the state of Missouri as defined in sections 60.401 through 60.491, RSMo.
- (8) Parcel—A single unit of real property which can be described by location and boundaries and for which there is a history of defined, legally recognized interests. Parcel boundaries are usually described in a conveyance document by aliquot part, metes and bounds, or by lot number in a recorded subdivision.
- (9) Point—A vector map feature having no length and no area, but is simply defined by a coordinate location.
- (10) Polygon—A vector map feature represented by a closed geometric figure.
- (11) Polyline—A vector map feature formed by connecting two (2) points and having no area.
- (12) Tax Map—A document or map for taxation purposes showing the location, quantity, dimensions, and other relevant information pertaining to a parcel of land subject to *ad valorem* taxes, commonly known as property taxes.
- (13) Topology—The spatial relationships between connecting, or adjacent, geographic features. Topological relationships are for spatial modeling operations that do not require coordinate information.
- (14) United States Public Land Survey System (PLSS)—The rectangular survey system created by the United States Government founded on a principal meridian and base line and forming townships approximately six (6) miles north and south by six (6) miles east and west, which are subdivided into thirty-six (36) sections approximately one (1) mile square. The system, established by surveys executed under the direction of the General Land Office (GLO), and evidenced by township plats, field notes, and other available documentation. This system includes nonconforming private claims and other surveys as may have been performed under the direction of the General Land Office. The Fifth Principal Meridian is the basis of the Missouri PLSS.

*AUTHORITY: section 60.670, RSMo 2016. * Original rule filed Dec. 1, 2016, effective June 30, 2017.*

**Original authority: 60.670, RSMo 2010, amended 2013.*

2 CSR 90-65.040 Coordinate System for Digital Cadastral Parcel Mapping Specified

PURPOSE: This rule specifies the coordinate system utilized for digital cadastral parcel mapping in Missouri.

- (1) The Missouri State Plane Coordinate System shall be the coordinate system used for digital cadastral parcel mapping in Missouri.
- (2) To convert metric mapping coordinates, if desired, to U.S. Survey Feet, use the conversion of 1 meter equals 3.28083333 feet, where 1 meter equals 39.37 inches exactly.

*AUTHORITY: section 60.670, RSMo 2016. * Original rule filed Dec. 1, 2016, effective June 30, 2017.*

**Original authority: 60.670, RSMo 2010, amended 2013.*

Cadastral Mapping Survey Standards Cont.

2 CSR 90-65.050 Digital Cadastral Parcel Mapping Requirements Pertaining to the United States Public Land Survey System

PURPOSE: This rule describes the minimum standard requirements that apply to the United States Public Land Survey System in a digital cadastral parcel mapping system.

- (1) The United States Public Land Survey System (PLSS) shall be the foundation for digital cadastral parcel mapping in Missouri.
- (2) Accurately delineate the PLSS layer through practical application of available source information. Missouri county courthouses, the Missouri Land Survey Repository, and other official sources and authorities of PLSS and record surveys are appropriate sources for survey information and documentation.
- (3) Determination of the digital location of section and quarter section corners of the PLSS should adhere to the survey principles, which created the PLSS, and now guide maintenance. Digital section vertices shall be held to the accuracy standards defined in this rule, preferably existing only at the quarter-corners.
- (4) Data prevalence for the establishment of the digital location of section corners shall be—
 - (A) Known coordinate points established by a licensed professional land surveyor, or as recorded with the Missouri Department of Agriculture's Land Survey Program;
 - (B) Reference data from available recorded or unrecorded surveys established by the County Surveyor or by licensed private surveyors and/or surveys filed with the Missouri Department of Agriculture's Land Survey Program;
 - (C) Reference data from real estate conveyances, subdivision plats, or other recorded land information;
 - (D) General Land Office (GLO) surveys and field notes; and
 - (E) Established land use on digital orthophotography.
- (5) Documentation for the establishment of the PLSS section corners shall consist of a point data layer delineating how each corner was set. The PLSS registered section corner documents and subsequent research shall be referenced to this data layer within the digital mapping system. Delineation attribute may include, but not be limited to:
 - (A) Coordinate;
 - (B) Survey;
 - (C) Deed;
 - (D) Subdivision or Plat;
 - (E) GLO;
 - (F) Orthophotography; and
 - (G) Tax Map.

*AUTHORITY: section 60.670, RSMo 2016. * Original rule filed Dec. 1, 2016, effective June 30, 2017.*

**Original authority: 60.670, RSMo 2010, amended 2013.*

2 CSR 90-65.060 Digital Cadastral Parcel Mapping Requirements Pertaining to Land Parcels

PURPOSE: This rule describes the minimum standard requirements that apply to land parcels in a digital cadastral parcel mapping system.

- (1) A digital cadastral parcel map shall be based upon the United States Public Land Survey System (USPLSS).
- (2) Parcels shall be structured in a manner that facilitates topological analysis.
- (3) All parcels shall be constructed as polygons.
- (4) All Public Land Survey System (PLSS) corner lines shall be continuous and seamless within a mapping project and with adjoining mapping projects where mapping has been completed in conformity to these standards.

*AUTHORITY: section 60.670, RSMo 2016. * Original rule filed Dec. 1, 2016, effective June 30, 2017.*

**Original authority: 60.670, RSMo 2010, amended 2013.*

2 CSR 90-65.070 Accuracy Standard

Cadastral Mapping Survey Standards Cont.

(1) Accuracy reporting for digital cadastral parcel maps shall be made in accordance with Missouri Mapping Standards (MMS) of 10 CSR 30-6.010 to 10 CSR 30-6.030, or the Federal Geographic Data Committee's National Standard for Spatial Data Accuracy (NSSDA).

(2) If accuracy reporting is not provided using MMS, NSSDA, or other recognized standards, information shall be provided that enables users to evaluate how the data fits the requirements of their application. This information may include descriptions of the source material from which the Public Land Survey System (PLSS) and cadastral parcels were digitally constructed, accuracy of ground surveys associated with PLSS and cadastral parcel digital construction, and quality control procedures used in the production process.

*AUTHORITY: section 60.670, RSMo 2016. * Original rule filed Dec. 1, 2016, effective June 30, 2017.*

**Original authority: 60.670, RSMo 2010, amended 2013.*

2 CSR 90-65.080 Disclaimer

PURPOSE: This rule describes the disclaimer to be included with any digital or hard copy map produced from a digital cadastral parcel mapping system.

A digital cadastral parcel map provides graphic representation and access to cadastral information, but it does not purport to represent the results of a property boundary survey of each parcel shown. It is not intended for property boundary determination of individual parcels, nor be used in lieu of a property boundary survey by a licensed professional land surveyor. Therefore, prominent display of the following disclaimer, or equivalent wording, shall be on any digital or hard copy map that displays cadastral parcel data.

"This Cadastral Map is for informational purposes only. It does not purport to represent a property boundary survey of the parcels shown and shall not be used for conveyances or the establishment of property boundaries."

*AUTHORITY: section 60.670, RSMo 2016. * Original rule filed Dec. 1, 2016, effective June 30, 2017.*

**Original authority: 60.670, RSMo 2010, amended 2013.*



MIDLAND
GIS Solutions

Missouri's Most Trusted GIS Company

GIS Data Development | Web-Based & Mobile GIS
Custom GIS Services | GPS Data Collection & Mapping

Proud Supporters of MMA Since 2004!

www.midlandgis.com | (660) 562.0050



Mapping Missouri

Aerial Imagery Acquisition
Digital Orthophotography
LiDAR Acquisition & Processing
Topo & Planimetrics
Unmanned Aerial Systems

Contact:
Tim Donze
VP Business Development
timd@surdex.com
tel: 636-368-4400

www.surdex.com

Things You Might Not Know About Missouri

The most powerful earthquake to strike the United States occurred in 1811, centered in New Madrid. It shook more than one million square miles and was felt 1,000 miles away.

The first successful parachute jump from a moving plane was made above the Jefferson Barracks military post, near St. Louis, on March 1, 1912. U.S. Army Captain Albert Berry climbed to 1,500 feet in a Benoist aircraft and jumped.

Kansas City, Missouri has more fountains than any city in the world except Rome.

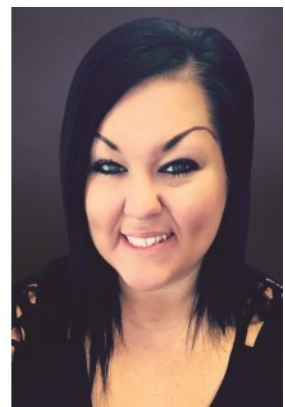
St. Joseph, Missouri was the starting point of the famed Pony Express.



Tiffany Rogers

Sales Representative

Office 417-869-7316
Cell 417-849-3828
Email trogers@spfdbblue.com
www.spfdbblue.com



Missouri Mappers Association Membership Application
 2016-2017 Dues (Renewed at Annual Conference in August)

| | | |
|---|----------------|----------------|
| <hr/> | | |
| First Name | Last Name | |
| <hr/> | | |
| Government Organization, Company or Consultant Name | Title | |
| <hr/> | | |
| County | | |
| <hr/> | | |
| Employment Address | City, ST Zip | |
| <hr/> | | |
| Home Address | City, ST Zip | |
| <hr/> | | |
| Email | Work Telephone | Home Telephone |
| Newsletter Mailing Preference <input type="checkbox"/> E-mail <input type="checkbox"/> Home <input type="checkbox"/> Work <i>MMA will email your copy of the bi-annual newsletter unless otherwise indicated on this form.</i> | | |

Membership Type & Annual Dues (Please Check One):

- ☐ **Regular Member (\$15)** – Mappers, Cartographers, Mapping Supervisors, Assessors, Surveyors, Geographic Information Systems (GIS) personnel and other persons involved with mapping.
- ☐ **Subscribing Members (\$25)** – Individuals or firms not eligible for regular membership that are interested in property mapping.
- ☐ **Student Member (\$5)** – Any student that attends a University, College, Vocational Institute or other recognizable School not eligible for other membership and interested in property mapping.

**Membership dues for Missouri Mappers Association are not tax deductible as a business expense.*

I hereby make application for membership in the Missouri Mappers Association. If admitted, I will abide by its by-laws and support its objectives. I have enclosed my membership dues with this application.

Signature: _____ Date: _____

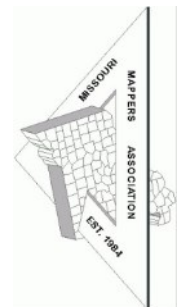
Please make checks payable to Missouri Mappers Association

OFFICE USE ONLY: Mail Form and
Payment to:

Date Received: _____

By (Initialed): _____

**Marti Suiter
 MMA Membership Director
 Hickory County Courthouse
 100 West Polk St., PO Box 97
 Hermitage, MO 65668**



Missouri Mappers Association 33rd Annual Conference
Go "All In" With Your Mapping
August 1st – 4th 2017
Capitol Plaza Hotel, Jefferson City, MO

NAME: _____

TITLE/ORGANIZATION: _____

ADDRESS: _____

PHONE NUMBER: _____ EMAIL ADDRESS: _____

GENERAL CONFERENCE REGISTRATION FEE: **\$140**_____

Includes MMA Annual Dues; registration gift; Tuesday Welcome Reception; Wednesday Vendor Reception; Thursday breakfast, lunch, and dinner; Thursday presentations; Thursday night entertainment; Friday breakfast and Annual Business Meeting.

Attending Welcome Reception (5:30 PM – 7:30 PM) Yes_____ No_____

(No additional charge, food & non-alcoholic beverages provided in Lincoln Room)

Attending Wednesday Prison Ghost Tour (8:00 PM – 10:00 PM) Yes_____ No_____

(\$26 not included in registration. Please bring payment & waiver with you)

WORKSHOPS – WEDNESDAY, AUGUST 2nd

- | | | |
|---|------------------|-----------|
| 1. ArcGIS Online Buster Schrage, GIS Manager, City of Jefferson | 8:30AM – 11:30AM | \$25_____ |
| 2. Riparian Rights and Other Challenging Issues Matt Sorensen, Midland GIS Solutions | 8:30AM – 11:30AM | \$25_____ |
| 3. Lifehacks: ArcGIS Stacey Priest, Schneider Corporation | 1:00PM – 4:00PM | \$25_____ |
| 4. Geo Spatial Law Christopher W. Dunn, Attorney and Counselor at Law | 1:00PM – 4:00PM | \$25_____ |

If you plan to bring additional guests to any of the conference meals, the cost per additional meal is \$20 per person.

Please indicate the number of guests you will be bringing, the meals you expect them to attend, and the associated costs in the space below.

| # Additional Guest | Meal(s) | \$ _____ |
|--------------------|---------|----------|
| _____ | _____ | \$ _____ |
| _____ | _____ | \$ _____ |
| _____ | _____ | \$ _____ |

TOTAL (Checks payable to Missouri Mappers Association) **\$**_____

REGISTRATION DEADLINE: JUNE 30, 2017

Mail completed form with payment to:

Sue Ann Stokes
McDonald County Assessor's Office
PO Box 726
Pineville MO 64856

All fees are non-refundable after July 14, 2017

Questions:

Sue Ann Stokes
Annual Conference Committee Chair
sueann.stokes@mcdonaldcountymo.gov
(417) 223-4361

LODGING:

Capitol Plaza Hotel & Convention Center
415 West McCarty Street
Jefferson City, MO 65101
800-338-8088

www.capitolplazajeffersoncity.com

Room rates are \$95/Run of House \$115/Suites. Be sure to ask for Missouri Mappers Association Rate. *Reservation Deadline June 30th*



115 Lafayette Street
Jefferson City, MO 65101

www.MissouriPenTours.com

2017 -- WAIVER AND RELEASE OF LIABILITY

Due to the size and the historic nature and character of the Missouri State Penitentiary site, tours of the site involve significant amounts of walking and standing; and during such tour you may encounter areas of diminished visibility; uneven ground, sidewalks, walkways and flooring; damp/wet/moldy conditions; temperature extremes; stairways, steps, slopes and other impediments to walking and mobility,

It is **NOT** recommended that you enter the Missouri State Penitentiary if you have impediments or physical limitations to your mobility, including using crutches, walker or a wheelchair; have asthma or environmental allergies; have a heart, respiratory, or circulatory condition; are prone to seizures; or have any kind of physical impediment, limitation or other condition that limits your ability to walk or stand. ***This facility is NOT Handicap Accessible.***

You may NOT bring food, drink or alcohol into, or Smoke (this includes E-Cigarettes) while on the Missouri State Penitentiary site.

*****Anyone entering the premises presumed to be Under the Influence or causing disruptions to the tours WILL BE REMOVED IMMEDIATELY – NO REFUNDS WILL BE GIVEN.***

There is to be no Videotaping or Audiotaping during the regular tours THIS INCLUDES THE USE OF “GO-PRO” CAMERAS (Overnight Investigations and Ghost Hunts only).

I have read the foregoing agreement, warnings and disclosure, and I understand and agree to be bound by it. **If accompanying a minor child for whom I am parent or legal guardian, I agree that the minor child for whom I am parent or legal guardian shall be bound by this agreement.** I hereby waive all liability on the part of, and hold harmless the Jefferson City Convention and Visitors Bureau, Inc., the State of Missouri, the Missouri State Penitentiary Redevelopment Commission and the City of Jefferson, and each of such entities' officials, employees and agents, from and against any and all liability, cause of action or claim for personal injury or property damage arising out of or in connection with against any incidents, occurrences, exposures or injuries, which I or the minor child for whom I am parent or legal guardian can hereby legally waive, that occur in connection with entry into or the tour of the Missouri State Penitentiary facility. If any part of this Agreement is held unenforceable, I agree to be bound by the remaining parts.

Does your visit to MSP include an Overnight Stay in Jefferson City?

☐ NO ☐ YES

If Staying Overnight, where are you staying?

☐ Hotel (name) _____
☐ Friends/Family _____

E-Mail Address if you wish to receive Newsletter For future Missouri State Penitentiary Events

Print Name

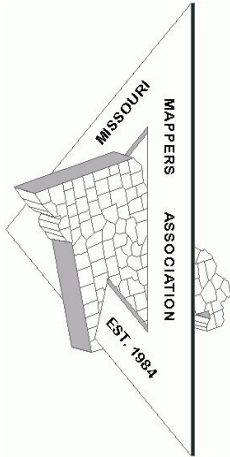
Signature

*If under 18, Parent or Legal Guardian's Signature

Tour Date



Contact Phone: 866-998-6998 or
573-305-8263 (after office hours)



OUTSTANDING BOSS OF THE YEAR APPLICATION

The "Outstanding Boss of the Year" award is presented at the Missouri Mappers Association annual conference. It is presented to honor the "Top Boss" who has displayed outstanding leadership abilities. Nominees must be a current member of MMA and have been a member for at least one year. Nominations should explain why the nominee merits this award.

Name of Nominee: _____

Nominee's Position: _____

I believe _____ should be nominated for "Outstanding

Boss of the Year" because _____

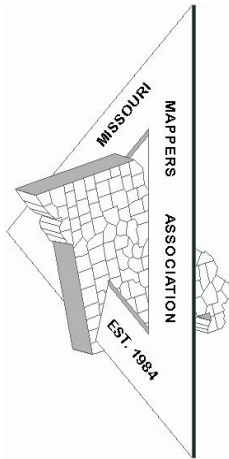
(Continue on additional sheet if necessary)

Your Name (Printed): _____

Signature: _____

Phone Number: _____ Email Address: _____

Mail Application to:
Alice Lee
PO Box 103
Morse Mill, Mo 63066
Or email to: alee@jeffcomo.org



MAPPER OF THE YEAR APPLICATION

The "Mapper of the Year" award is presented at the Missouri Mappers Association annual conference. The award is designed to honor an individual who has displayed outstanding abilities in the mapping field. Nominees must be a current member of MMA and have been a member for at least one year, and be technically proficient in mapping techniques and standards. Nominations should explain why the nominee merits this award.

Name of Nominee: _____

Nominee's Employer and position: _____

I believe _____ should be nominated for "Mapper of the Year" because _____

(Continue on additional sheet if necessary)

Your Name (Printed): _____

Signature: _____

Phone Number: _____ Email Address: _____

Mail Application to:
Alice Lee
PO Box 103
Morse Mill, Mo 63066
Or: email to: alee@jeffcomo.org

We have plenty of ad space available for upcoming issues. Please contact Sue Ann Stokes at sueann.stokes@mcdonaldcountymo.gov for more information. Rates are as follows.

| | | |
|---------------|-----------------|----------------|
| Business Card | \$25 per issue | 2 issues—\$50 |
| 1/4 Page | \$50 per issue | 2 issues—\$100 |
| 1/2 Page | \$75 per issue | 2 issues—\$150 |
| Full Page | \$100 per issue | 2 issues—\$200 |

Article and News Submissions

Article and news submissions for topics that cover issues that are important to all of us can be sent via email or snail mail to the following address for consideration for future publications.

Sue Ann Stokes, Mapper
McDonald County
PO Box 726
Pineville, MO 64856
sueann.stokes@mcdonaldcountymo.gov

Like us on Facebook to stay
informed on MMA activities and
other information of interest to
Missouri Mappers!

www.facebook.com/missourimappers

