

MMA News

Volume 33 Issue I

January 2017

MMA Executive Committee

- **President—Carla Palmer**
- **President Elect—Brenda Dryer**
- **Secretary—Tonja Friend**
- **Treasurer—Lisa Perry**
- **Director 2015-2016 - Sue Ann Stokes**
- **Director 2015-2017 -James Theisen**
- **Immediate Past President- Melissa Johnson**

Inside this issue:

Committee Reports 2-3

Annual Meeting 5
Treasurer's Report

MMA 2016 Annual 7-
Conference Meeting 10
Minutes

Missouri GIS 10
Conference Info

IAAO Course 600 15
Information

7th Annual SE Mis- 17
souri GIS Symposium

Mapper of the Year 20-
Boss of the Year 21
Application

Letter from the President

Happy New Year!

Hopefully this will be a great and prosperous year for everyone.

It is my great pleasure to serve as the Missouri Mappers Associations President. We have some great people on our Executive Board this year. I'm sure we will all work together very well to get done what needs to be accomplished and make 2017 a smooth and easy year.

Our first 2017 board meeting will be on the 16th of February. I am looking forward to seeing what our committees and chapters have been up to. If you are in an active chapter and know of a county around you that is not active please try to encourage them to join and become a part of your group. If you are reading this and haven't got a chapter please let me know and I will try to get you connected to the one closest to you.

Also, I want to remind everyone of our 600 class that is going to be held July 10th-14th of this year at Lawrence County, so please make sure you save the date.

Let's make this a great year!!!!!!! Please let me know if you have any ideas, concerns or have questions about our great association. If I don't know the answer I will find someone that does.

Thank you all,

My contact information is
Carla Palmer
Real Estate Supervisor
Jasper County Assessor's Office
302 S Main St
Carthage, Mo 64836
417-237-1042 work
417-437-4247 cell
cpalmer@jaspercounty.org

**Missouri Mappers Association
33rd Annual Conference
August 1st—4th, 2017
Capitol Plaza Hotel & Convention Center
Jefferson City, Missouri**

Certification Committee Report

The Certification Committee is looking for anyone that might be interested in the PMM Certification test. If you have five years of cadastral mapping (or related) experience, have 30 hours of education in the mapping (or related) field, are a member of Missouri Mappers Association, and are currently working in the mapping field, you are eligible to take the PMM test. The mapping portion of the test can be taken either digitally or manually. If you are thinking about applying to take this test, please contact me at alee@jeffcomo.org or give me a call at 636-797-6274.

Respectfully submitted,

Alice Lee, PMM

Awards Committee Report

The Awards Committee will be looking for nominations for Mapper of the Year and Boss of the Year to be awarded at the Annual Meeting. Please send in nominations for your co-workers and bosses who are deserving of these awards. The nomination forms are in this issue of MMA News.

Respectfully submitted,

Alice Lee, PMM

Media Committee Report

If you are a current MMA Committee or Chapter Chair please remember to submit your reports for our newsletter.

A special thanks to all our advertiser's!! Please check out their ads.

Sue Ann Stokes
Media Committee Chair

Annual Conference Committee Report

The Annual Conference Committee met January 12th. We are currently working on the beginning details of our 33rd Annual Conference. Our team is eager to make this year's conference bigger and better than 2016. Look for a "Save The Date" with more details in the near future. We will be at the Capitol Plaza Hotel in Jefferson City, MO August 1st-4th, 2017.

Hope to see you all there!!

Sue Ann Stokes
Annual Conference Committee Chair

Membership Committee Report

The Missouri Mappers Association currently has 117 paid members.

Respectfully Submitted,

Marti Suiter, PMM



Tiffany Rogers

Sales Representative

Office **417-869-7316**

Cell **417-849-3828**

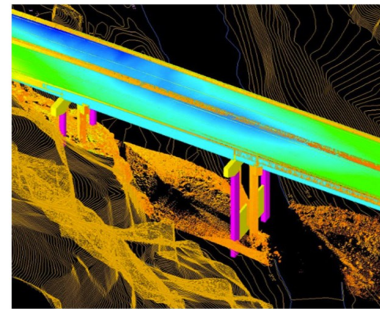
Email **trogers@spfdblue.com**

www.spfdblue.com



*Tiffany Rogers, Springfield Blue Print
32nd Annual Missouri Mappers Conference*





ACCESSGE \oplus GRAPHIC

IMAGERY - LIDAR - MAPPING - GIS - HOSTING

.....

ACCESS GEOGRAPHIC, LLC TAKES PRIDE IN SERVING COMMUNITIES AND INDUSTRY ACROSS MISSOURI AND THE MIDWEST. WHILE EVERY PROJECT IS DIFFERENT, OUR COMMITMENT TO FINDING THE MOST **DIRECT** AND **COST-EFFECTIVE** GEOSPATIAL SOLUTION STAYS THE SAME. WE HONESTLY ENJOY WHAT WE DO, AND YOU'LL SEE IT IN OUR **RESULTS**.

.....

WWW.ACCESSGEOGRAPHIC.COM

(480) 709-2710

Treasurer's Report**MISSOURI MAPPERS ASSOCIATION****ANNUAL MEETING****END OF YEAR TREASURER'S REPORT**

July 23, 2015 thru Aug. 9, 2016

BALANCE as of July 23, 2015	\$19,755.87
RECEIPTS	\$16,072.42
BALANCE + RECEIPTS	\$35,828.29
DISBURSEMENTS	\$10,401.46

ANNUAL MEETING	\$8,817.84
AWARDS	\$0.00
POSTAGE	\$87.03
HISTORICAL	\$0.00
INFO TECH	\$429.38
EDUCATION	\$265.70
DONATIONS	\$0.00
ADVERTISING	\$144.40
MISC. EXPENSES	\$517.11
MILEAGE	\$0.00
REFUND	\$140.00

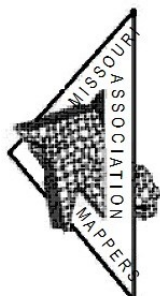
SW Chapter Report

The South West Chapter attempted to have a meeting in November but had to postpone due to 2016 Tax Statements going out. We are scheduled to have a meeting in April. I hope to have 2 possible speakers for this meeting. Please help me reach out to anyone in the GIS profession for our meeting in April 2017. Thank you!

Respectfully Submitted,

Tonja Friend

East Central Chapter Report



EAST CENTRAL CHAPTER

Missouri Mappers Association

1/12/2017



East Central Missouri Chapter Report

On January 18th the East Central Missouri Chapter of the Missouri Mappers Association is holding our quarterly chapter meeting at the office of the Perry County Regional Planning Office (1 W. St. Joseph Street, Perryville Mo). We would like to start at 12:00 pm and end by 3:00 pm. Lunch will be at the American Legion in Perryville Mo. Regional Planning will be giving a presentation on their web site.

At our Oct 12th meeting the chapter toured the Perry County War Museum, everyone really enjoyed it. Nine members were present.

In case of bad weather please contact Sarah Anderson or Richard Kramer

Sincerely,

Richard E Kramer Sr.

Richard Kramer Sr.

President, Southeast Central Chapter MMA

Phone : 573-243-2300 ext.: 33

Email: rkramer@jacksonmo.org

Membership Officer's

Vice President:

Teresa Kysor

tkysor@CityofCapeGirardeau.org

Treasurer:

Sarah Anderson

snanderson@capecounty.us

Secretary:

Alice Lee

alee@jeffcomo.org

Bollinger, Cape Girardeau, Franklin, Gasconade, Iron, Jefferson, Lincoln, Madison, Perry, Reynolds, Scott, St Charles, St Francois, St Louis, St Louis City, St Genevieve, Warren, Washington

MMA Executive Board Meeting Minutes

Missouri Mapper Association 32nd Annual Business Meeting August 12, 2016

Meeting called to order at 9:00 am by President Melissa Johnson.

Those present on the board were President Melissa Johnson, President-Elect Carla Palmer, Past President Richard Kramer, Sr., 2nd Year Director Brenda Dryer, 1st Year Director Sue Ann Stokes, Secretary Tonja Friend. Treasurer Lisa Perry was unable to attend.

Annual meeting minutes from July 31, 2015 were read by Tonja Friend and approved.

Treasurer Report:

Treasurer report was read by Brenda Dryer and approved.

Committee Reports:

Sue Ann Stokes wanted to thank all that helped on this year's conference. "It was definitely a group effort!" She was impressed with the Capital Plaza Hotel and how well they tried to meet every need that MMA had. Sue Ann wanted to caution everyone on how hard it was to try to move the conference around. Food is the biggest expense that every conference planner has to worry about. This year Capital Plaza set up some very tasty meals. Accommodations were very nice.

Certification:

Alice Lee reported that no one has signed up this year for the PMM test.

Media:

Sue Ann Stokes reported that content is the biggest issue for the newsletter. She would like to see more MMA members submit an article that was 25-80 pages than nothing at all. If you find an article that is interesting to mapping please do not hesitate to submit it. If you would like to write up something that your county is doing please submit it! There is a Missouri Mappers Association Facebook Page. Please get on Facebook and "LIKE" it!

Membership:

Katie Shepherd reported that there is not a final number of members who have paid for membership or those who attended conference. She hopes to have those numbers when the Board Members meet again. Certificates were handed out for new members.

MMA Executive Board Meeting Minutes Cont.

Chapter Reports:

East Central Chapter: Richard Kramer, Sr., President reported that they are getting ready for the Seventh Annual SEMO GIS Symposium which will be held September 21, 2016. Currently they have 9 speakers slated for this day. 15 seats are open for this free Symposium. If you are interested in attending get your registration form in as soon as possible.

West Central Chapter: Marti Suiter, President reported that they currently have 28 members. When you join the West Central Chapter they also make sure that you pay your dues for MMA. In May the Chapter did a tour of the Bagnell Dam. They are looking forward to the next year and getting together.

South West Chapter: Tonja Friend, President reported that Lora Miller was elected as Vice President. We have set aside two meeting dates. One for October 14, 2016 and the other for April 7, 2017. Meeting locations have not been set up at this time. There were many ideas on things to do but nothing has been set in stone at this time. Since we have new counties in our chapter we are going to reach out and see if there are any counties interested in joining the South West Chapter and MMA. Thank you to all that donated to the Chapter Basket this year. We had enough donated to create two baskets this year.

North East Chapter: Sandra Lanier, President had no information at this time.

North West Chapter: Matt Sorenson, President has accepted leadership of this chapter. Before this meeting the chapter was vacant. Matt is going to reach out to the counties in his area that has an interest in the North West Chapter. If anyone is interested in helping Matt with some ideas please contact him.

Awards:

Alice Lee presented awards.

Mapper of the Year Award – Tim Kean

Fireball Award – Sue Ann Stokes

Boss of the Year – James Tyson

Charter Members Award – Stan Balsman & Diedra Volkart

Certification of Appreciation – Mark Duewell for time dedicated to MMA

Board Members 2016 – Certification of Appreciation

President – Melissa Johnson

Past President – Richard Kramer Sr.

President Elect – Carla Palmer

Director 1st Year – Sue Ann Stokes

Director 2nd Year – Brenda Dryer

Treasurer – Lisa Perry

Secretary – Tonja Friend

MMA Executive Board Meeting Minutes Cont.

Awards Continued:

Annual Meeting – Sue Ann Stokes

Awards – Alice Lee

Certification – Alice Lee

Historical – Sue Ann Stokes

Membership – Katie Shepherd

Media – Sue Ann Stokes

President East Central – Richard Kramer Sr.

President West Central – Marti Suiter

President North East – Sandra Lanier

Certificate of Appreciation – Mark Duewell for time dedicated to MMA

Elected MMA Board Members for 2016-2017 Year:

President – Carla Palmer

President Elect – Brenda Dryer

Past President – Melissa Johnson

2nd Year Director - Sue Ann Stokes

1st Year Director - James Theisen

Treasurer – Lisa Perry

Secretary – Tonja Friend

2016-2017 Board Members were sworn in by Past President Richard Kramer Sr.

New Business:

President Carla Palmer addressed the future of the 600 Course. Lawrence County has offered to host the 600 Course at their Judicial Building. A show of hands showed that a majority of the MMA members were interested in attending the course starting July 10, 2017 to the end of the week. Other than the cost of instructor and material the cost to the students would be room and board. When more information is available on the cost of the course it will be forwarded to the members.

Lisa Menpara opened up discussion on the 2017 Conference site. Sue Ann Stokes suggested the conference stay at the Capital Plaza Hotel for next year's conference. There was a show of hands of those interested in having the conference at Capital Plaza Hotel. Majority agreed to have it at the Capital Plaza Hotel. There was discussion on when was the best time to hold the conference. Sue Ann recommended that we keep our Conference date to the beginning of August. Capital Plaza Hotel was able to keep the conference rates cheaper in August than in July. Lisa Menpara made a motion to keep the 2017 Annual Conference at the Capital Plaza Hotel at the beginning of August or as close to the beginning of August as possible. Majority voted to keep it at the Capital Plaza Hotel. Annual meeting committee will let the Board members know what days have been reserved for next year.

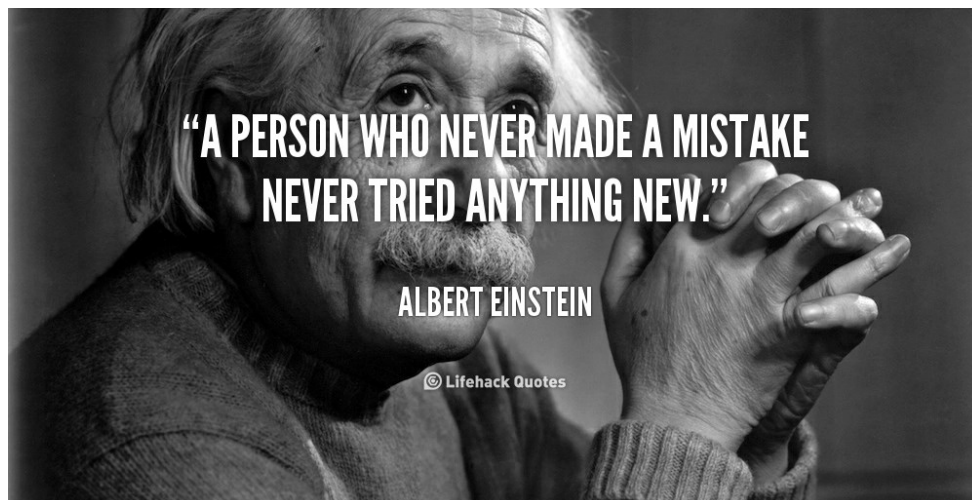
MMA Executive Board Meeting Minutes Cont.

New Business Continued:

Second business that needed to be discussed was the MMA Booth at MOGIS Conference 2017 held February 20-22, 2017 at Tan Tar A. A volunteer was needed to set up the booth and represent MMA at this conference. Matt Sorenson volunteered to set up the booth next to his booth and man both. Carla Palmer thanked him for his service.

Carla Palmer thanked everyone for a great year and for the Chapter Baskets that were donated this year. Carla encouraged each member to reach out to the Counties around them and tell them about MMA and the benefits of being a member.

Meeting Adjourned at 9:52 am by President Carla Palmer.



Missouri GIS Conference

Unleashing the Power of Location

ESRI Learning Lab

Register at www.mogiscon2017.com!
Early Bird registration ends January 31st.
Hotel discount rate ends January 22nd

Poster Contest

12 Workshops

2017 Missouri GIS Conference

Tan-Tar-A Resort - Lake of the Ozarks - February 20 - 22, 2017

Networking Opportunities



*Katie Shepherd, MIDLAND GIS Solutions
2016 Corporate Sponsor
32nd Annual Missouri Mappers Conference*



Missouri's Most Trusted GIS Company

GIS Data Development | Web-Based & Mobile GIS
Custom GIS Services | GPS Data Collection & Mapping

Proud Supporters of MMA Since 2004!

www.midlandgis.com | (660) 562.0050



Mapping Missouri

Aerial Imagery Acquisition
Digital Orthophotography
LiDAR Acquisition & Processing
Topo & Planimetrics
Unmanned Aerial Systems

Contact:
Tim Donze
VP Business Development
timd@surdex.com
tel: 636-368-4400

www.surdex.com

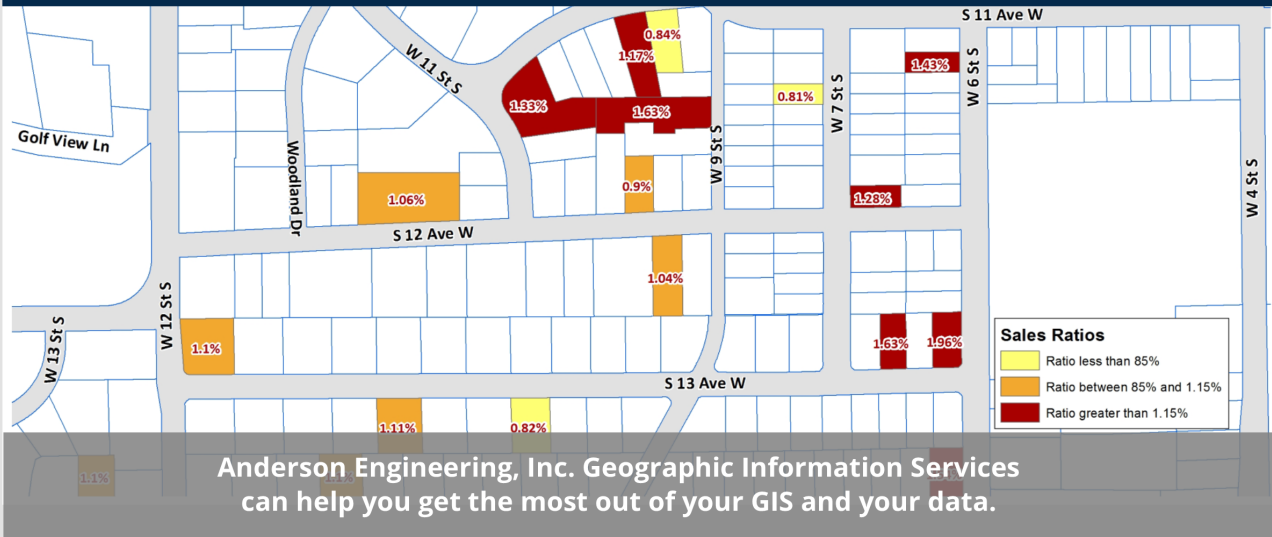
*Tim Donze, SURDEX
2016 Corporate Sponsor
32nd Annual Missouri Mappers Conference*





info@AndersonEngineeringInc.com
www.AndersonEngineeringInc.com

GEOGRAPHIC INFORMATION SERVICES



PARCEL MAPPING AND MAINTENANCE

Total cadastral data conversion from Mylar maps or annual parcel maintenance.

VISUALIZE CAMA DATA

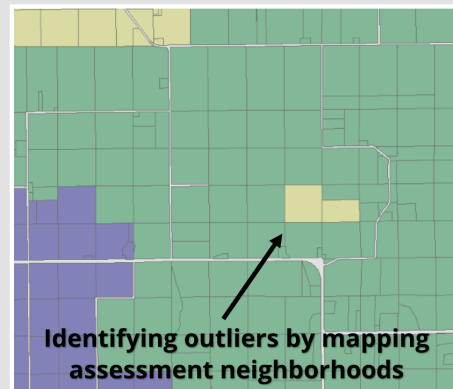
Bring your CAMA data to life by integrating that information into your GIS. Get the most out of your data by adding value to your GIS

GIS SOFTWARE TRAINING

Staff struggling with editing in GIS? We can help train them to work better and faster.

UAV AERIAL SERVICES

Quickly capture high-growth areas to help pick up improvements between flights. Easily integrates into existing GIS.



SERVICES:

- ♦ Geographic Information Systems
- ♦ Civil Engineering
- ♦ Land Surveying
- ♦ Geotechnical Services
- ♦ Construction Testing Labs
- ♦ Commercial Drone Services

Call us at our toll-free number, (866) 866-2741
or visit www.AndersonEngineeringInc.com for more information

Missouri Mappers Association Membership Application
 2016-2017 Dues (Renewed at Annual Conference in August)

<hr/>		
First Name	Last Name	
<hr/>		
Government Organization, Company or Consultant Name	Title	
<hr/>		
County		
<hr/>		
Employment Address	City, ST Zip	
<hr/>		
Home Address	City, ST Zip	
<hr/>		
Email	Work Telephone	Home Telephone
Newsletter Mailing Preference <input type="checkbox"/> E-mail <input type="checkbox"/> Home <input type="checkbox"/> Work MMA will email your copy of the bi-annual newsletter unless otherwise indicated on this form.		

Membership Type & Annual Dues (Please Check One):

- ☐ **Regular Member (\$15)** – Mappers, Cartographers, Mapping Supervisors, Assessors, Surveyors, Geographic Information Systems (GIS) personnel and other persons involved with mapping.
- ☐ **Subscribing Members (\$25)** – Individuals or firms not eligible for regular membership that are interested in property mapping.
- ☐ **Student Member (\$5)** – Any student that attends a University, College, Vocational Institute or other recognizable School not eligible for other membership and interested in property mapping.

**Membership dues for Missouri Mappers Association are not tax deductible as a business expense.*

I hereby make application for membership in the Missouri Mappers Association. If admitted, I will abide by its by-laws and support its objectives. I have enclosed my membership dues with this application.

Signature: _____ Date: _____

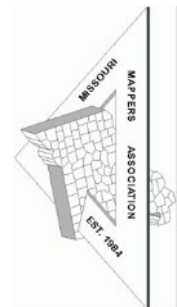
Please make checks payable to Missouri Mappers Association

OFFICE USE ONLY: Mail Form and
Payment to:

Date Received: _____

By (Initialed): _____

**Marti Suiter
 MMA Membership Director
 Hickory County Courthouse
 100 West Polk St., PO Box 97
 Hermitage, MO 65668**



IAAO Class Information

Save the Date!

IAAO Course 600: Principals and Techniques of Cadastral Mapping

The Missouri Mappers Association is pleased to announce that IAAO Course 600 will be held July 10th -14th, 2017.

Instructor Rick Norejko will teach the class. As many MMA members can attest, he is an excellent instructor!

The course will be held in Mt. Vernon, MO at the Lawrence County Justice Center. The cost for the class will be \$600 per student which includes materials.

Watch for registration to open early 2017!

Course Summary: *Principles and Techniques of Cadastral Mapping is intended to be a comprehensive, interactive program to introduce entry-level map maintenance personnel and assessment technicians to the field of cadastral mapping. Students are presented basic mapping principles and techniques and are expected to demonstrate basic skills that will allow them to plot deeded descriptions in both the metes and bounds land description system and the Public Land Survey System. Principles and Techniques of Cadastral Mapping utilize lectures, classroom discussion, and exercises to emphasize the main concepts and procedures taught in the course. (Source www.iaao.org)*

There are a couple of lodging options in Mt. Vernon, MO and also in Springfield (25 min away). Meals will be on your own.

MMA Members Favorite Spots Around The Globe

Point Betsie Lighthouse, MI



Star Fish Island, Belize



Isla Roatan, Honduras



Paradise Island, Cozumel



Wolverine, MI



Maroon Bells ,Snowmass CO



Seventh Annual Southeast Missouri GIS Symposium

EAST CENTRAL CHAPTER Missouri Mappers Association 9/21/2016

Seventh Annual Southeast Missouri Geographical Information Systems GIS Symposium (Making GIS work in Southeast Missouri) East Central Missouri Chapter of Missouri Mappers Association

The Seventh Annual Southeast Missouri Geographical Information Systems GIS Symposium (Making GIS work in Southeast Missouri) was held on Wednesday, September 21, 2016 at the Cape Girardeau Career and Technology Center in Cape Girardeau Missouri. The symposium was sponsored by MGISAC, Missouri Mappers Association, Cape Career and Technology Center, East Central Missouri Chapter of the Missouri Mappers Association, Advisory Members, and People.

The symposium featured several presentations starting with:

Stan Balsman, Missouri Mappers Association Update
Melissa Johnson, MGISAC Chair, Updates with MGISAC
Zahner and Associates, Mobile Lidar
Sergeant Adams and Deputy Windbigler, Cape County: Active Shooter
John Gilmore, Horner & Shifrin, Real Time Editing from the field
George Kip Forestry Specialist Missouri Department of Conservation, Crowd Sourcing Using GIS
Sheriff Rick Walter and Detective Barry Morgan Scott County Mo, ZJ Drone Project
Frank Wideman University of Missouri Extension, Rules & Regulations for Drones

Lunch was provided by Stooges Restaurant of Jackson Mo .

The symposium was an excellent opportunity to meet and network with others in the GIS field from many different locations around the state. In all sixty nine people attended the symposium. We wish to thank all of our sponsors and those that participated in the symposium., especially David Dickey with the Cape Career and Technology Center.

Hope to see everyone next year.

Sincerely,

Richard E Kramer Sr.

Richard Kramer Sr

President, Southeast Central Chapter MMA

Phone: 573-243-2300 ext: 33

Email: rkramer@jacksonmo.org

Membership Officer's

Vice President:

Teresa Kysor

kysor@CityofCapeGirardeau.org

Treasurer:

Sarah Anderson

snanderson@capecounty.us

Secretary:

Alice Lee

alee@jeffcomo.org

Bollinger, Cape Girardeau, Franklin, Gasconade, Iron, Jefferson, Lincoln, Madison, Perry, Reynolds,
Scott, St Charles, St Francois, St Louis, St Louis City, Ste Genevieve, Warren, Washington

32nd Annual Missouri Mappers Association Conference

*Joe Madej, Seiler Instrument
2016 Corporate Sponsor*



*Darcey Witt & Michael Witt, ClearBasin Software
2016 Corporate Sponsor*



32nd Annual Missouri Mappers Association Conference

Mike Kallas & Jeff Krecic, Tukah Technologies

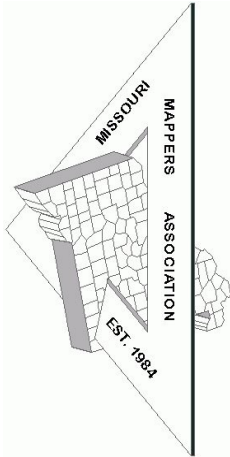


Mark Barrie (not pictured), Schneider



Melissa Johnson, MGISAC





OUTSTANDING BOSS OF THE YEAR APPLICATION

The "Outstanding Boss of the Year" award is presented at the Missouri Mappers Association annual conference. It is presented to honor the "Top Boss" who has displayed outstanding leadership abilities. Nominees must be a current member of MMA and have been a member for at least one year. Nominations should explain why the nominee merits this award.

Name of Nominee: _____

Nominee's Position: _____

I believe _____ should be nominated for "Outstanding

Boss of the Year" because _____

(Continue on additional sheet if necessary)

Your Name (Printed): _____

Signature: _____

Phone Number: _____ Email Address: _____

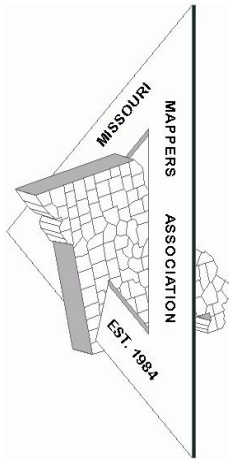
Mail Application to:

Alice Lee

PO Box 103

Morse Mill, Mo 63066

Or email to: alee@jeffcomo.org



MAPPER OF THE YEAR APPLICATION

The “Mapper of the Year” award is presented at the Missouri Mappers Association annual conference. The award is designed to honor an individual who has displayed outstanding abilities in the mapping field. Nominees must be a current member of MMA and have been a member for at least one year, and be technically proficient in mapping techniques and standards. Nominations should explain why the nominee merits this award.

Name of Nominee: _____

Nominee’s Employer and position: _____

I believe _____ should be nominated for “Mapper of
the Year” because _____

(Continue on additional sheet if necessary)

Your Name (Printed): _____

Signature: _____

Phone Number: _____ Email Address: _____

Mail Application to:
Alice Lee
PO Box 103
Morse Mill, Mo 63066
Or: email to: alee@jeffcomo.org

We have plenty of ad space available for upcoming issues. Please contact Sue Ann Stokes at sueann.stokes@mcdonaldcountymo.gov for more information. Rates are as follows.

Business Card	\$25 per issue	2 issues—\$50
1/4 Page	\$50 per issue	2 issues—\$100
1/2 Page	\$75 per issue	2 issues—\$150
Full Page	\$100 per issue	2 issues—\$200

Article and News Submissions

Article and news submissions for topics that cover issues that are important to all of us can be sent via email or snail mail to the following address for consideration for future publications.

Sue Ann Stokes, Mapper
McDonald County
PO Box 726
Pineville, MO 64856
sueann.stokes@mcdonaldcountymo.gov

Like us on Facebook to stay
informed on MMA activities and
other information of interest to
Missouri Mappers!

www.facebook.com/missourimappers

