

MMA News

Volume 32 Issue 2

June 2016

MMA Executive Committee

- **President—Melissa Johnson**
- **President Elect—Carla Palmer**
- **Secretary—Tonja Friend**
- **Treasurer—Lisa Perry**
- **Director 2015-2016—Sue Ann Stokes**
- **Director 2014-2016—Brenda Dryer**
- **Immediate Past President—Richard Kramer**

Inside this issue:

Committee Reports	2-3
7th Annual SE Mo GIS Symposium	5
MMA Board Meeting Minutes	7-8
Assessors Conference Information	10
IAAO Class Information	12
MMA Conference Information	14-19
Mapper of the Year Boss of the Year Application	20-21

Letter from the President

Hello everyone!

Hope you have had a great spring so far. The Annual Meeting Committee has been working hard to provide some great content for our meeting in August! I am very excited that it will be held in Jefferson City this year. Jefferson City is the winner of Rand McNally's Best of the Road "Most Beautiful Small Town in America" in 2013! The location at the Capital Plaza Hotel is walking distance from several points of interest, and you will enjoy the Prison Tour the planning committee has scheduled. There are plenty of terrific restaurants and shops downtown to visit. All of the information about the Annual Meeting and some info about Jefferson City is posted on our website on the Annual Meeting Registration page so you can plan your free time during your visit.

As we get ready for the Annual Meeting, please send me any discussion items you may have for the agenda so we can discuss at our Friday morning meeting. Think about what role you can play in the Missouri Mappers Association and consider assisting with one or more committees. It really doesn't take a lot of time and you will be lightening the load for others. Talk to other mappers in your area about joining MMA!

I will be working on getting the IAAO 600 class set up for next year. We have some tentative classroom locations and I will be talking Rick Norejko about potential dates he is available to teach the class. I will keep you all posted via the listserv.

Note: As Sue Ann has mentioned before, the Missouri River Bridge in Jefferson City is being worked on, but other than major holiday weekends I haven't heard of any huge issues that people are experiencing with that. MODOT has a good informational webpage that has webcams of traffic and tools to make your travel planning easier.
<http://www.modot.org/central/MORiverBridgeJC.htm>

Looking forward to seeing all of you August 9 – 12th!

MMA President - Melissa Johnson, GISP
mjohnson@colecouny.org * 573-634-8901

MMA Board Meeting Schedule for 2016

Aug 12, 2016 – (Conference Annual Meeting)
Nov 30, 2016, 10-11:30 am

The dates listed above are subject to change. Additional dates may be added as needed. Changes will be sent out to the MMA Member list via email and also distributed through the MMA Listserv. Members are encouraged to participate.

Certification Committee Report

The Certification Committee is looking for anyone that might be interested in the PMM Certification test. If you have five years of cadastral mapping (or related) experience, have 30 hours of education in the mapping (or related) field, are a member of Missouri Mappers Association, and are currently working in the mapping field, you are eligible to take the PMM test. The mapping portion of the test can be taken either digitally or manually. If you are thinking about applying to take this test, please contact me at alee@jeffcomo.org or give me a call at 636-797-6274.

Respectfully submitted,

Alice Lee, PMM

Awards Committee Report

The Awards Committee is still looking for nominations for Mapper of the Year and Boss of the Year to be awarded at the Annual Meeting. Please send in nominations for your co-workers and bosses who are deserving of these awards. The nomination forms are in this issue of MMA News.

Respectfully submitted,

Alice Lee, PMM

Media Committee Report

If you are a current MMA Committee or Chapter Chair please remember to submit your reports for our newsletter. It is important for all our membership to know what's going on in all areas of our association. Communication is key and the newsletter is the perfect place to start. All MMA members are encouraged to submit anything they would like to see in the newsletter. Many thanks to those who have contributed.

A special thanks to Robert Moore, www.accessgeographic.com. Check out their full page ad on page 11 of this issue.

Sue Ann Stokes

Media Committee Chair
Mapper
McDonald County Assessor's Office
PO.. Box 726/602 N. Main Street
Pineville, Missouri 64856
sueann.stokes@mcdonaldcountymo.gov
417-223-7405



Education Committee Report

We (MOMAPPERS and MGISAC) have a scheduled ISO 19115 Metadata Workshop.

Event date: Wednesday, June 15th.

Location: St. Charles Government Building, St. Charles, Missouri

This workshop deals with the ins and outs of creating, editing and transforming your current FGDC compliant .xml metadata to get it in line with the new standard coming into wider use (ISO 19115 and associated standards).

The workshop is FREE and open to all geospatial users. Lunch (McAlister's Deli catered) and drinks for breaks will be provided.

Seats are more limited (28) than for our regular regional workshops due to the need to keep attendees to two per laptop and to keep this hands on workshop to a manageable size.

If you wait to register you may miss out!

Contact myself, Monica or Chuck if you have any questions.

Go here to register: <http://www.eventbrite.com/e/gis-metadata-workshop-st-charles-mo-tickets-25270089518>

So far 19 are registered...

Mark E. Duewell

Program Manager – GIS Spec. Sr.

Missouri Spatial Data Information Service (MSDIS)

115 Business Loop 70 West, Rm. 119

Columbia, MO, 65211-8380

duewellm@missouri.edu

<http://www.msdis.missouri.edu/index.html>

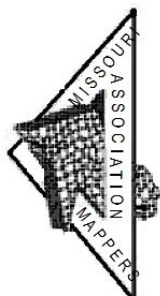
(573) 882-6734

West Central Chapter Report

The West Central District Chapter of Missouri Mappers Association met on Friday, May 20, 2016, at Bagnell Dam for a tour of the facility and then on to lunch and business meeting. The tour was very interesting and was probably the last time any group will be allowed to tour the facility. Our thanks to Ken Olive of Camden County who arranged the tour. We had 10 members in attendance which was the perfect number for a tour group. Our next meeting will be held during the Annual Meeting in Jefferson City in August.

Marti Suiter, PMM

Chairperson for WCD MMA

East Central Chapter Report**EAST CENTRAL CHAPTER****Missouri Mappers Association****4/07/2016****East Central Missouri Chapter Report**

On April 6th the East Central Missouri Chapter of the Missouri Mappers Association held a quarterly chapter meeting at the office of the SEMO Regional Planning Commission in Perryville, Mo. In attendance were 20 members. Lunch was catered by Alice Lee, and very much appreciated by the chapter and after a short video from Cloudpoint Geographics Inc. (Parcel Fabric Editing - Construct From Parent) guest from St. Charles (Bill Holder, Ann Henry, Lynn Koval, and Kim House) talked about what they liked about parcel fabric and what they didn't like. A good discussion followed and the meeting was adjourned. Next meeting will be August 24, 2016.

Sincerely,

Richard E Kramer Sr.

Richard Kramer Sr.

President, Southeast Central Chapter MMA

Phone : 573-243-2300 ext.: 33

Email: rkramer@jacksonmo.org

Membership Officer's

Vice President:

Teresa Kysor

tkysor@CityofCapeGirardeau.org

Treasurer

Sarah Anderson

snanderson@capecounty.us

Secretary:

Alice Lee

alee@jeffcomo.org

Bollinger, Cape Girardeau, Franklin, Gasconade, Iron, Jefferson, Lincoln, Madison, Perry, Reynolds, Scott, St Charles, St Francois, St Louis, St Louis City, St Genevieve, Warren, Washington

Seventh Annual Southeast Missouri GIS Symposium

Making GIS work in Southeast Missouri

Cape Girardeau Career and Technology Center
1080 S. Silver Springs Road
Cape Girardeau, MO 63703

Sponsored by: *MGISAC, Cape Girardeau Career & Technology Center, East Central Missouri Mappers, and Missouri Mappers Association*

Date: Wednesday, September 21, 2016

Times: 8:00 a.m. - 3:00 p.m.

Conference Presenters:

- 8:00 – 8:30 a.m. Sign In and Vendor Set Up
- 8:30 – 8:45 a.m. Sponsor Recognition and Introductions
- 8:45 – 9:00 a.m. Stan Balsman, Missouri Mappers Association
- 9:00 – 9:15 a.m. Melissa Johnson, MGISAC Chair:
- 9:15 – 10:00 a.m. Zahner and Associates: Mobile Lidar
- 10:00 – 10:15 a.m. Break with Vendors
- 10:15 – 11:15 a.m. Active Shooter
- 11:15 – 12:30 p.m. Lunch Provided: Visit with Vendors
- 12: 30 – 1:00 p.m. John Gilmore, Horner & Shifrin: Real Time Editing from the Field
- 1:00 – 1:30 p.m. George Kipp: Crowd Sourcing Using GIS
- 1:30 – 2:00 p.m. Jacob Meuth:
- 2:00 – 2:30 p.m. Dewayne McAlister: Drone Demonstration
- 2:30 – 3:00 p.m. Frank Wideman: Rules & Regulations for Drones
- 3:00 p.m. Wrap Up

MDSIS Report-Mark Duewell, MSDIS Program Manager

MSDIS Monthly (April) Report to the MGISAC – May 12th, 2016

Submitted by: Mark Duewell, MSDIS Program Manager

1. MSDISWEB\Imagery Virtual Servers update – DOIT has begged off on the planned June 1st, 2016 the target date for the relocation of the MSDIS MST (Rolla) servers to UMKC. This is due to a maintenance requirement they have had come up. The date will be reset - but will likely occur during the following week (June 6th-10th).
2. The MSDIS Web and Imagery servers were rolled and the OS was imaged (copied to the MST servers). As a reminder, MSDIS is now housed at its new permanent Imagery update - location at Mizzou North (old Ellis Fischel facility next to US 70 and very near the USDA offices in the Parkade Center). The new location's address is: **115 Business Loop 70 W, Rm. 119, Columbia, MO 65211-8380.**
3. Geoportal – Clip & Download – The number of files available in the Portal C&D has remained static at 2,862...
4. Imagery – The 18 inch western Missouri DOQQs are up as a service. The final dump of the last of the LiDAR data Liz delivered to MSDIS will be complete (zipped) and shipped in the very near future to Wash U. updating the LiDAR data sets available via FTP.
5. Several more imagery drives remain to be dumped and returned to their owners – they are – largely – smaller and more recently released areas (Wright County corrections comes to mind).

Reminder - MOLiDAR – is available. Public comments are always welcome.

The service is available in both LAS: (<http://www.msdis.missouri.edu/data/lidar/download/index.html>)

And in DEM form:

<http://www.msdis.missouri.edu/data/lidar/download/modem.html>

Don't forget to visit our website
www.missourimappers.org

MMA Executive Board Meeting Minutes

Missouri Mappers Association Executive Board of Directors Meeting February 10, 2016

Meeting called to order 10:05 am by President Melissa Johnson.

Those present via phone conference were President Melissa Johnson, President-Elect Carla Palmer, Secretary Tonja Friend, Treasurer Lisa Perry, Director 1st Year Sue Ann Stokes, Director 2nd Year Brenda Dryer. Past President Richard Kramer, Sr. was not available.

Meeting Minutes read from October 5, 2015 by Secretary Tonja Friend. Approved by board, majority vote.

Treasurer Report read by Lisa Perry. Approved by board, majority vote.

Committee Reports:

Annual Meeting: Sue Ann Stokes reported that everything is going as scheduled. The committee has come up with a theme for this years conference. Entertainment for this years event is starting to come together. Speakers and classes are going to be exciting. There are a few people that need to be contacted still that have not committed to speaking but it appears that it will be wrapped up by the committee's next meeting.

Awards: Tonja Friend reported that there is nothing to report at this time. Will be soliciting for nominees closer to the conference.

Certification: Nothing to report at this time.

Education: This is currently a vacant committee. Mark Duewell offered to take the committee chair if no one is interested in filling the position. Melissa Johnson thanked Mark for his offer to chair this committee and welcomed him aboard. Melissa Johnson reported that Ken Olive has been working on the classes for IAAO. Classes will not be available for the 2015-2016 year. It was suggested that classes might be held in a government training facility. Depending on the facility MMA may be able to use the facility free or at a small fee. A suggestion was made that the class attendees provide their own room and board during the training. Executive board will revisit this issue as more information is provided.

Historical: Sue Ann Stokes was excited to report that there has been a donation of old plats and atlas that appear to be originated in the 1900's.

Legislature: Currently there is not a committee formed, If anyone is interested in chairing this committee please contact Melissa Johnson or someone on the Executive Board.

Membership: Nothing to report at this time.

MMA Executive Board Meeting Minutes Cont.

Media: Sue Ann Stokes reported that so far she has had no trouble putting the newsletter together. The most trouble that she has had is finding content for the newsletter and advertising. A suggestion was made that instead of sending newsletters to members of Missouri Mappers Association only to include the Assessors in the State of Missouri as well. By including the Assessors maybe vendors would want to place ads in the newsletters to appeal to the readers who have authority over the office budget. All the board members were in agreement.

East Central Chapter: Richard Kramer Sr., President. Getting ready for the Seventh Annual SEMO GIS Symposium, September 21, 2016.

West Central Chapter: Marti Suiter, President. Nothing to report at this time.

South West Chapter: Tonja Friend, President. I am working on setting up a presentation and chapter meeting sometime this Spring.

South East Chapter: Unsure who the President is currently. Nothing to report at this time.

North East Chapter: Sandra Lanier, President. Nothing to report at this time.

North West Chapter: Brian Lomas, President. Nothing to report at this time.

New Business: Sarah Anderson has sent in a Funding Request Application for the Seventh Annual SEMO GIS Symposium in the amount of \$400. The symposium is hosted by MGISAC. Discussion started by reviewing current budget balance for 2016 and the criteria in which the board has set forth. Currently the balance for 2016 Education Budget is \$2,000. The board has agreed that Symposium will support educational opportunities that benefit Missouri mappers. A suggestion was made that a Missouri Mapper member (preferably someone who is in the South East Chapter) be placed on the agenda at the SEMO Symposium to promote the Missouri Mappers Association. Mark Duewell said that he would be available to give a brief presentation for Missouri Mappers Association if no one volunteers. Another suggestion was made to give a survey to critique the SEMO Symposium. This would be given to the Missouri Mappers Board members to evaluate the effectiveness of funding future educational opportunities for SEMO GIS Symposium. It was suggested that a member of SEMO write this survey because they have a general knowledge of what is on the agenda. Mark Duewell volunteered to write the survey if no one from SEMO volunteered. A motion was made by Tonja friend to fund the Seventh Annual SEMO GIS Symposium \$400. That a representative from Missouri Mappers Association be placed on the agenda to give a brief presentation about the Association. At the end of the Symposium a survey be created by SEMO representative and passed out to attendees to evaluate

their educational experience. That the survey be returned to MMA Board for evaluating feedback for future SEMO GIS Symposium educational funding. Lisa Perry 2nd the motion. Approved by majority vote.

Old Business: No old business outstanding.

Future Board Meeting scheduled for May 25, 2016 at 10am. Additional information will be forwarded at this time.

Meeting adjourned at 11:05am by President Melissa Johnson.

A SPECIAL THANKS TO OUR 2016 CORPORATE SPONSORS



2016 Assessors' Conference: October 3rd-6th, 2016

Chateau on the Lake, Branson

You may make your hotel reservations at this time and you are strongly encouraged to do so, as soon as possible. There will be enough rooms for assessors conference attendees as long as they are reserved before the deadline of September 2nd, 2016. After the deadline, there is no guarantee you will have a room in the Chateau.



You may contact the hotel for reservations at this number 1-888-333-5253.

For more information contact Laura Pope 'lspope@olemac.net'

Online registration coming soon: www.moassessorsassn.org



Missouri GIS Conference

Unleashing the Power of Location

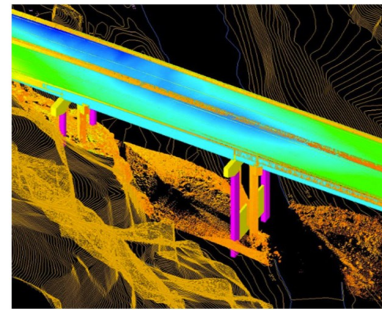


Lake of the Ozarks - February 20 - 22, 2017

**Workshops – Keynote – Educational Sessions
Networking Opportunities**

@ Newly Renovated Tan-Tar-A Resort





ACCESSGE \oplus GRAPHIC

IMAGERY - LIDAR - MAPPING - GIS - HOSTING

.....

ACCESS GEOGRAPHIC, LLC TAKES PRIDE IN SERVING COMMUNITIES AND INDUSTRY ACROSS MISSOURI AND THE MIDWEST. WHILE EVERY PROJECT IS DIFFERENT, OUR COMMITMENT TO FINDING THE MOST **DIRECT** AND **COST-EFFECTIVE** GEOSPATIAL SOLUTION STAYS THE SAME. WE HONESTLY ENJOY WHAT WE DO, AND YOU'LL SEE IT IN OUR **RESULTS**.

.....

WWW.ACCESSGEOGRAPHIC.COM

(480) 709-2710

IAAO Class Information

September 12th-16th, 2016 Camden on the Lake Resort, Lake Ozark

Instructor: Richard Norejko, CMS ([2001 IAAO Member of the Year](#))

Course Title: The Principles of Property Law For Appraisers and Cadastral Mappers and Assessors

32 hour course, with testing, CE credit approved, will include four eight-hour sessions covering the material.

When it comes to real property most folks immediately think of a deed. This mindset is superficial and often leads to incomplete, or worse, incorrect conclusions as to the location of rights and property ownership for assessment purposes. That is what this workshop is about: an aid for the interpretation and administration of the cadaster as it relates to some aspect of the land; boundaries, ownership of record, its size, its location, or some other characteristic.

A partial syllabus includes:

- Indian vs. English views of property ownership
- History of American survey techniques
- Quit rents-the first appraisals of property
- Property ownership theory
- The founders of the PLSS
- **INTERPRETING REAL PROPERTY LAW**
- Formal requirements for deeds
- Recording land titles
- Interpreting ALL types of deeds

This class will inspire participants to take their knowledge to the next level, and students to be embolden to make both correct and confident decisions regarding the interpretation of legal instruments and assessment techniques.



Register online: www.moassessorassn.org

For more information email Wendy Nordwald: wnordwald@warrencountymo.org

It's time to register for the 32nd Annual Missouri Mappers Association "The Magic of Mapping" Conference



We are excited to be in Jefferson City at the Capitol Plaza Hotel this year. Join us Tuesday evening for our Welcome Reception, food and non-alcoholic beverages will be provided.

Be sure to sign up for one of our educational workshops on Wednesday. This year, following our afternoon workshop, we are offering our attendee's a chance to visit the Historic Missouri State Penitentiary. Immediately following the prison tour we will meet back at the hotel for our Vendor Reception. Please plan to attend and make contact with all our vendor's. MMA will be serving food and 2 free drink tickets. This will be an excellent way to unwind after a busy day.

Thursday will be a full day of presentations on many interesting topics. Our Keynote Speaker this year will be James D Harlan, University of Missouri-Columbia. A few others in our Thursday line up include the following.

L. Scott Samuels, P.E. Floodplain Management Engineer, SEMA
Alexis M. Giesecker, GISP, State of Missouri
David Townsend, Agents National Title Insurance Company
Curtis Copeland, GIS Coordinator, City of Branson
Chet Hunter, Emergency Management Director, Greene County

Friday morning will be our Annual Business Meeting.

Hope to see you in August!!



DON'T FORGET!!
Our door prize and give away
drawings are on Thursday.
Please bring your MMA
Chapter Baskets



32 Annual MMA Conference Workshops and Sessions

Workshops: Wednesday, August 10th

Matt Sorensen: Riparian Rights and Other Challenging Parcel Mapping Issues

This workshop will focus on mapping parcels along water boundaries. (e.g. rivers, lakes, and creeks). The State of Missouri has thousands of miles of river and lake shoreline. Mapping parcels along these water boundaries can sometimes be confusing and overwhelming. We will discuss riparian rights and how some of these water boundary mapping issues have been handled in various counties throughout the State. We will also take time to work “hands-on” on a few challenging water boundary mapping examples, the old fashioned way, on hardcopy example maps. If you can map it the old fashioned way, you can easily map it into your GIS. Engineering scales, protractors, and example maps, with corresponding deeds, will be provided as part of this workshop.

Josie Bock: ArcGIS Advanced Topics and Tips and Tricks

This half day workshop will demonstrate various techniques such as advanced queries, editing, and analysis using the ArcGIS 10.3.1/10.4 software environment. We will also be going over tips and tricks that will hopefully help make your ArcGIS work easier. Pens and notepads will be provided as part of this workshop.

Josie Bock: Beginning to Use gAMA (Appraiser and Mapping Tools) by ClearBasin Software

This workshop will help those who currently have or are interested in the gAMA software. We will be going over the uses and functionality built into the Appraiser and Mapping interfaces, how to tackle various kinds of parcel splits, adding improvements, and adjusting existing data. Pens and notepads will be provided as part of this workshop.

Speaking Sessions: Thursday August 11th

Alexis M. Gieseke, GISP, State of Missouri

Field Data Collection using ArcGIS Online

Survey 123, Collector and GeoForm oh my! This session will cover the differences and various ways to collect data utilizing the ArcGIS Online platform. We will conduct a hands on exercise so, **BYOD** – Bring Your Own Device

Curtis Copeland, GIS Coordinator, City of Branson

Applied GIS for Economic Development

The City of Branson is currently undergoing a couple of major re-development and revitalization projects. The City has utilized a number of GIS applications, modeling and analysis, for project planning, decision making, and project tracking. This presentation will review some of those processes and models, and the tools used to create them.

L. Scott Samuels, P.E. Floodplain Management Engineer, State Emergency Management Agency

Introductory to the NFIP and FEMAs RiskMAP program

This presentation will layout the basic NFIP requirements for community participation and the mapping products produced to support their membership, including the evolution of the Flood Insurance Rate Map (FIRM) product that is the basis for governing development in the regulatory floodplains.

Chet Hunter, Emergency Management Director, Greene County Missouri

A Picture is Worth a Thousand Words

This presentation will show how mapping definitely impacts many areas, especially Emergency Management. We currently use mapping to guide our decision making, understand impact, and capture recovery.

David Townsend, Agents National Title Insurance Company

Deeds and Chain of Title Q & A

Our most requested speaker is back again this year! This session will be a full hour devoted to answering your most perplexing deed and real estate title questions.



This grouping on the grounds of the Missouri state capitol in Jefferson City includes York, Lewis, Seaman, Clark, and George Drouillard. Bronze by Sabra Tull Meyer, 2008.

Missouri Mappers Association 32nd Annual Conference
 “The Magic of Mapping”
 August 9-12, 2016
 Capitol Plaza Hotel, Jefferson City, MO

NAME: _____

TITLE/ORGANIZATION: _____

ADDRESS: _____

PHONE NUMBER: _____ EMAIL ADDRESS: _____

GENERAL CONFERENCE REGISTRATION FEE: \$140 \$ _____

Includes MMA Annual Dues; registration gift; Tuesday Welcome Reception; Wednesday Vendor Reception; Thursday breakfast, lunch, and dinner; Thursday presentations; Thursday night entertainment; Friday breakfast and Annual Business Meeting.

ATTENDING TUESDAY WELCOME RECEPTION (5:30 PM) Yes _____ No _____
 (No additional charge, food and non-alcoholic beverages provided)

ATTENDING WEDNESDAY PRISON TOUR (5:00 PM – 7:00 PM) Yes _____ No _____
 (Vendor Reception, food & 2 drink tickets provided immediately following tour at hotel)

WORKSHOPS – WEDNESDAY, AUGUST 10

1. ArcGIS Advanced Topics, Tips and Tricks	8:30AM – 11:30AM	\$25 _____
2. Riparian Rights and Other Challenging Issues	8:30AM – 11:30AM	\$25 _____
3. Beginning to use gAMA by ClearBasin Software	1:00PM – 4:00PM	\$25 _____

If you plan to bring additional guests to any of the conference meals, the cost per additional meal is \$20 per person. Please indicate the number of guests you will be bringing, the meals you expect them to attend, and the associated costs in the space below.

# Additional Guest	Meal(s)	
_____	_____	\$ _____
_____	_____	\$ _____
_____	_____	\$ _____

TOTAL (checks payable to Missouri Mappers Association) \$ _____

REGISTRATION DEADLINE: JULY 1, 2016

All fees are non-refundable after July 15, 2016

Mail completed form with payment to:
 Lisa Perry, MMA Treasurer
 302 S. Main St. Room 201
 Carthage, MO 64836

Questions: Contact Sue Ann Stokes
 sueann.stokes@mcdonaldcountymmo.gov
 417-223-7405

LODGING:
 Capitol Plaza Hotel & Convention Center
 415 West McCarty Street
 Jefferson City, MO 65101
 800-338-8088
www.capitolplazajeffersoncity.com

Room rates are \$92/Run of House \$112/Suites. Be sure to ask for Missouri Mappers Association Conference Rate.



www.MissouriPenTours.com
115 Lafayette Street
Jefferson City, MO 65101

2016 -- WAIVER AND RELEASE OF LIABILITY

Due to the size and the historic nature and character of the Missouri State Penitentiary site, tours of the site involve significant amounts of walking and standing; and during such tour you may encounter areas of diminished visibility; uneven ground, sidewalks, walkways and flooring; damp/wet/moldy conditions; temperature extremes; stairways, steps, slopes and other impediments to walking and mobility,

You should **NOT** enter the Missouri State Penitentiary if you have impediments or physical limitations to your mobility, including using crutches, walker or a wheelchair; have asthma or environmental allergies; have a heart, respiratory, or circulatory condition; are prone to seizures; or have any kind of physical impediment, limitation or other condition that limits your ability to walk or stand. This facility is NOT Handicap Accessible.

You may NOT bring food, drink or alcohol into, or Smoke while on the Missouri State Penitentiary site.

Anyone entering the premises under the influence or causing disruptions to the tours WILL BE REMOVED IMMEDIATELY – NO REFUNDS WILL BE GIVEN.

There is to be no Videotaping or Audiotaping during the regular tours (Overnight Investigations and Ghost Hunts only).

I have read the foregoing agreement, warnings and disclosure, and I understand and agree to be bound by it. **If accompanying a minor child for whom I am parent or legal guardian, I agree that the minor child for whom I am parent or legal guardian shall be bound by this agreement.** I hereby waive all liability on the part of, and hold harmless the Jefferson City Convention and Visitors Bureau, Inc., the State of Missouri, the Missouri State Penitentiary Redevelopment Commission and the City of Jefferson, and each of such entities' officials, employees and agents, from and against any and all liability, cause of action or claim for personal injury or property damage arising out of or in connection with against any incidents, occurrences, exposures or injuries, which I or the minor child for whom I am parent or legal guardian can hereby legally waive, that occur in connection with entry into or the tour of the Missouri State Penitentiary facility. If any part of this Agreement is held unenforceable, I agree to be bound by the remaining parts.

Does your visit to MSP include an Overnight Stay in Jefferson City?

_____ NO _____ YES

If Staying Overnight, where are you staying?

_____ Hotel (name) _____

_____ Friends/Family

E-Mail Address if you wish to receive Newsletter For future Missouri State Penitentiary Events

 Print Name

 Signature

 If under 18, Parent or Legal Guardian's Signature

 Tour Date



Missouri Mappers Association 32nd Annual Conference Vendor Registration Form

Don't miss your chance to exhibit at this year's premier mapping and GIS event! Exhibit space is limited and will be assigned on a first-come, first-served basis. Be sure to return your form **with payment** as soon as possible!

EXHIBIT APPLICATION

COMPANY NAME: _____
 MAILING ADDRESS: _____
 CITY/STATE/ZIP: _____
 PHONE NUMBER: _____
 CONTACT PERSON: _____
 EMAIL ADDRESS: _____
 TYPE OF SERVICE DISPLAYED: _____

NAMES OF EXHIBITORS: (One representative included in Exhibit Fee. All exhibitor representatives must be registered. Use additional sheet if necessary.)

1. NAME: _____	3. NAME: _____
TITLE: _____	TITLE: _____
2. NAME: _____	4. NAME: _____
TITLE: _____	TITLE: _____

EXHIBITOR FEES

EXHIBIT SPACE	\$400 _____
ADDITIONAL REPRESENTATIVES (<i>Per Person</i>)	\$75 _____
SPONSORSHIP	\$100 _____

TOTAL (Checks payable to Missouri Mappers Association) \$ _____

REGISTRATION DEADLINE: JULY 1, 2016

Mail completed form with payment to:
 Lisa Perry, Treasurer
 Missouri Mappers Association
 302 S. Main St. Room 201
 Carthage, Mo 64836

Questions: Contact Sue Ann Stokes
 Conference Committee Chair
 sueann.stokes@mcdonaldcountymo.gov
 417-223-7405

Missouri Mappers Association 32nd Annual Conference

“The Magic of Mapping”

August 9th – 12th, 2016

Capitol Plaza Hotel & Convention Center

415 West McCarty Street

Jefferson City, Mo 65101

800-338-8088

www.capitolplazajeffersoncity.com

Exhibitor Setup	August 10th 12pm-5pm
Vendor Reception	August 10th 7:30-9 pm
Exhibit Hours	August 11th 7:30am-4pm
Exhibit Teardown	August 11th 4pm

Room rates are \$92/Run of House \$112/Suites-King Bed, Sofa Bed.
Be sure to ask for the Missouri Mappers Conference rate.

Basic exhibit fee of \$400 includes:

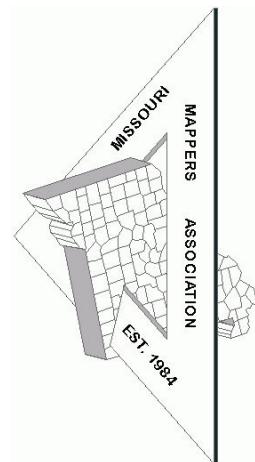
- 1 8'x10' booth space with table and 2 chairs
- Conference meals for one person
- One year MMA membership dues
- Current MMA membership list
- Your company contact information on our website

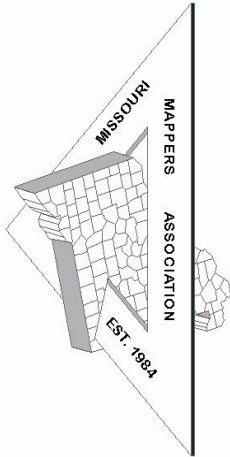
www.missourimappers.org

Additional Booth Personnel \$75 each
(Includes meals and MMA dues)

Sponsorship \$100

Vendor reception sponsorship includes special recognition in the conference program and our newsletter, and your company logo on a display in the exhibit hall.





OUTSTANDING BOSS OF THE YEAR APPLICATION

The "Outstanding Boss of the Year" award is presented at the Missouri Mappers Association annual conference. It is presented to honor the "Top Boss" who has displayed outstanding leadership abilities. Nominees must be a current member of MMA and have been a member for at least one year. Nominations should explain why the nominee merits this award.

Name of Nominee: _____

Nominee's Position: _____

I believe _____ should be nominated for "Outstanding

Boss of the Year" because _____

(Continue on additional sheet if necessary)

Your Name (Printed): _____

Signature: _____

Phone Number: _____ Email Address: _____

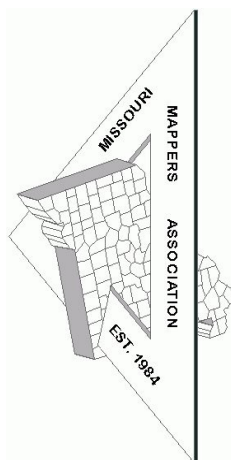
Mail Application to:

Alice Lee

PO Box 103

Morse Mill, Mo 63066

Or email to: alee@jeffcomo.org



MAPPER OF THE YEAR APPLICATION

The "Mapper of the Year" award is presented at the Missouri Mappers Association annual conference. The award is designed to honor an individual who has displayed outstanding abilities in the mapping field. Nominees must be a current member of MMA and have been a member for at least one year, and be technically proficient in mapping techniques and standards. Nominations should explain why the nominee merits this award.

Name of Nominee: _____

Nominee's Employer and position: _____

I believe _____ should be nominated for "Mapper of the Year" because _____

(Continue on additional sheet if necessary)

Your Name (Printed): _____

Signature: _____

Phone Number: _____ Email Address: _____

Mail Application to:

Alice Lee

PO Box 103

Morse Mill, Mo 63066

Or: email to: alee@jeffcomo.org

We have plenty of ad space available for upcoming issues. Please contact Sue Ann Stokes at sueann.stokes@mcdonaldcountymo.gov for more information. Rates are as follows.

Business Card	\$25 per issue	2 issues—\$50
1/4 Page	\$50 per issue	2 issues—\$100
1/2 Page	\$75 per issue	2 issues—\$150
Full Page	\$100 per issue	2 issues—\$200

Article and News Submissions

Article and news submissions for topics that cover issues that are important to all of us can be sent via email or snail mail to the following address for consideration for future publications.

Sue Ann Stokes, Mapper
McDonald County
PO Box 726
Pineville, MO 64856
sueann.stokes@mcdonaldcountymo.gov

Like us on Facebook to stay
informed on MMA activities and
other information of interest to
Missouri Mappers!

www.facebook.com/missourimappers

