

MMA News



Volume 28 Issue 4

October 2012

MMA Executive Committee

- President - Lisa Mendpara
- President Elect-Tim Kean
- Secretary - Brenda Dryer
- Treasurer - Lisa Perry
- Director 2011-2013 - Erika Hagg
- Director 2011-2012 - Diedra Volkart
- Immediate Past President - Katie Shepherd

Inside this issue:

Committee/Chapter Reports	2 - 6
Free GIS Software for K-12	7
Mapper of the Year Boss of the Year	8-9
Map Talk!	10-11
"What is it you do again?"	12-13
MMA Board Meeting Minutes	13-15

Letter from the President

I am honored to serve as the 2012-2013 MMA President, and am glad to be working with such a dedicated group of people! A big thanks to everyone who volunteered to chair a committee or chapter this year. I encourage everyone to be actively involved with the committee and/or chapter that you are a part of. The Executive Board, Committee Chairs, and Chapter Presidents contact information is included with this newsletter.

Lisa Perry and the Annual Meeting Committee are off to a great start planning our next Conference. Please feel free to pass along any suggestions for speakers or workshop topics. I'm excited to see what they have in store for us as they continue to plan the event! Remember that we have a location change, and our 2013 Conference will be at Tan-Tar-A July 23rd – 26th.

Be sure to check our website at www.missourimappers.org. We work hard to keep the site updated with meeting agendas, minutes, educational opportunities, and other events. Another great resource for staying informed is the MMA List Serve. Instructions for joining are on our website.

As always, please share any ideas, comments, suggestions, and questions with the Executive Board. We value all your feedback.

Respectfully submitted,
Lisa Mendpara
MMA President

Lisa Chapman

Brush up on
your RT 66
Era Trivia!
2013 Annual
Meeting will
feature a
Game Show!



Mark your calendar for the
2013 Annual Meeting!
July 23–26th
Tan-Tar-A Resort, Osage Beach, MO

IT Committee Report—Jason Sweet

WEBSITE:

Added the Minutes from the Annual Meeting to the website

Updated information for Annual Conferences Sponsors/Vendors

Updated Executive Committee and other Committees and members

Added Information for North Central Region's workshop

Added Information for MO GIS Conference

The **Information Technology Committee** manages the organization's website and ListServe service to disseminate organizational information to members and promote the organization to non-members.

(www.missourimappers.org).

Specific roles include:

- Maintaining the information on the MMA website to ensure it is timely and accurate. (Currently this is accomplished via email through our contracted webmaster, Ryon Gross
- Common updates include, but are not limited to: Annual Meeting registration info, calendar of events, board and committee members, etc.
- Encourage and support participation in the Association's list server. Currently, messages can be distributed to the group through the list server via email. The list server's name is MissouriMappersAssoc-L and it is maintained at the University of Missouri.

Congratulations to the 2012 Award Recipients!

Mapper of the Year: Barbara Kaszuba, Jasper County

Boss of the Year: Doug Bowerman, Lawrence County

Fireball Award: Erika Hagg, Greene County

Annual Meeting Award: Kacie Neel & James Theisen, Pettis County

President Award: Lisa Mendpara, Cass County and
Sue Ann Stokes, McDonald County

Awards Committee Report

Nomination forms for the 2012-2013 awards are available in this newsletter. When the nomination forms are returned, the committee will select their choices and present them to the Executive Board for approval.

Respectfully submitted,
Marti Suiter, PMM
Chair Person Awards Committee

Certification Committee Report

The Certification Committee will be accepting applications for the Professional Missouri Mapper designation. The test will be scheduled in the Spring of 2013 at a time and place dependent on where each applicant wishes to take the test. At this time, we have not had any applicants since 2009, and we now have the test available in digital format. If you would be interested in taking the PMM exam, please contact either Marti Suiter at marti-suiter@aol.com or Dan Roe at asses-sor.gis@callawaycounty.org. (Please place PMM exam in the Subject field).

The **Certification Committee** is responsible for managing the PMM designation program. To acquire designation, candidates must have a certain amount of experience and education, and complete a comprehensive mapping examination. Committee roles include:

- Reviewing applications for a member taking the Professional Missouri Mapper (PMM) exam
- Administering and grading the test
- Presenting a certificate at the Annual Meeting to applicants that pass the test
- The 2012-2013 Committee will be active participants in reviewing the current PMM examination and incorporating a GIS version of the exam.

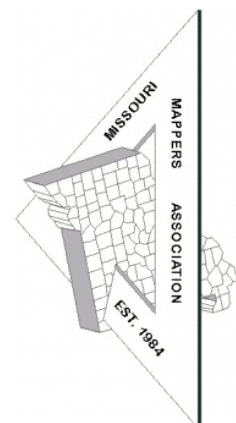
Applicants must have received a passing grade on the IAAO Mapping Course or related education, have five or more years of experience in cadastral mapping or related field, and be a member in good standing of Missouri Mappers Association. The cost to the applicant is \$25.00 which is to be submitted at time of application. If the application is rejected by the Committee, the \$25.00 will be returned to the applicant.

Respectfully submitted,
Marti Suiter, PMM
Co Chair Certification Committee

TREASURER'S REPORT Oct. 12, 2012

BALANCE as of July 18, 2012	\$23,585.73
RECEIPTS	\$6,380.00
BALANCE + RECEIPTS	\$29,965.73
DISBURSEMENTS	\$17,381.04
ANNUAL MEETING	\$15,933.00
AWARDS	\$682.07
POSTAGE	\$0.00
HISTORICAL	\$0.00
INFO TECH	\$120.00
EDUCATION	\$75.43
DONATIONS	\$30.00
ADVERTISING	\$125.00
MISC. EXPENSES	\$351.54
MILEAGE	\$64.00
BALANCE as of Oct. 12, 2012	\$12,584.69

(Misc. Expenses: Midland GIS \$56.17, Chateau on the Lake \$241.28, Erika Hagg refund for Basket give away \$53.34 for the Missouri Assessor's Association)



Membership Committee Report

MMA Membership Committee Report: 10/12/2012

We had a total of 51 survey takers at the MMA booth at the Assessor's Annual Conference in Branson. The gift basket winner was Brad Hudson (Stone County Assessor)

Are you a member of MMA? 55%

Are any of your staff MMA members? 46%

Have you or your staff attended an MMA Annual Conference? 65%

Will you attend in 2013? 61%

If no, most common reason is budget.

How many mappers are in your Assessor's Office? 1 (47%) 2 (27%) 3/more (8%) zero (8%)

Would you be willing to serve on the MMA Committee or Executive Board? 10%

Would you let your staff serve on an MMA Committee or Executive Board? 59%

What do you utilize for your daily mapping tasks?

GIS 59%

Traditional pen and ink 20%

GIS is under development 6%

What time of year or month would work best for you and/or your staff to attend our Annual Conference?

Summer 33%

Fall 22%

Winter 4%

Anytime 6%

What training courses or educational sessions do you prefer ?

Pen and Ink Mapping 22%

Missouri Mapping Fundamentals 45%

Beginner GIS Mapping 41%

Intermediate GIS Mapping 35%

Web GIS Development/Uses 25%

Deed Reading & Interpretation 35%

GPS 10%

Regional Workshops 24%

Other comments and suggestions:

- Continue to grow the MMA
- Roundtable sessions
- hands on classes for those w/o any mapping/survey experience
- more networking
- contact all Assessors couple of month prior to Conference

-I am also working with Stephanie Stevens on creating a list of all non-member counties and what Chapters they belong to.



The basket of goodies from the BASKET CASE in Springfield.

Publication Committee Report

The Publication Committee is always looking for fresh ideas and content for the MMA Newsletter. Thank you to everyone who provided a report or article for this newsletter! I enjoy seeing the enthusiasm for the GIS and Mapping profession through the informative articles and reports that are submitted.

On a more personal note, I want to thank the Missouri Mappers Association Board and Members for the memorial to the American Diabetes Association in memory of my husband Ron. I am honored to be a part of such a great organization.

Melissa Johnson, Publications Chair

2012 KAM Conference—Mark Duewell

I attended the 2012 KAM Conference in Wichita, Kansas from October 15 – 18. On October 15 I sat in on a half day ArcGIS Server class on my own dime which was very informative – more importantly the discussion amongst the participants was very valuable. I found the presentations on Python Programming, Cloud GIS, ESRI's 10.1 and Building Highly Functional Web-based Mapping Applications with ArcGIS Server and HTML5 informative and worth considering sessions such as these at our future conferences.

Substantially otherwise though - their conferences are much like ours – they just seem to get up a little later in the morning most days! I was told there were between 125 – 130 attending. The members seemed much like our own and it seemed to me that they were glad to see each other and enjoyed the after conference activities - just as much as the conference content.

I'd like to thank the Association for providing me the opportunity to attend. I'll be happy to assist the future conference committee if I can.

Respectfully submitted,
Mark

North Central Region Workshop

The North Central Regional GIS Workshop was held in Trenton, MO at the North Central Missouri College, Barton Farm Campus on October 24th, 2012.

It was attended by 39 people from a cross section of the mapping discipline. Local governments, state, federal and academia were all well represented – and there were a number of MO Mappers Association members present. In addition to the normal small number of state and federal presentations there were lectures from regional planning commissions, ESRI and Midland GIS. A highlight was Dr. Patricia Drews with Northwest Missouri State University speaking on training and educational geospatial opportunities in the area. Other topics included Mobile GIS, Pre and Post Disaster geospatial case studies and the Sunshine Law as regards GIS data sharing at the local government level. Finally there were two technical sessions on GIS building blocks and working with LiDAR in ArcGIS 10.1.

Break food and drinks were provided by Missouri Mappers Association and the catered Wild Onion BBQ lunch was provided by the Missouri GIS Advisory Council.

Respectfully submitted by Mark Duewell, MSDIS, MGISAC Education and Outreach Co-Chair and workshop coordinator.

Education Committee Report

The Education Committee is in the process of planning several GIS training sessions to be conducted throughout the state in 2013. We are also looking to offer a one-day basic training session on cadastral mapping that will be based on some of the course offerings by IAAO. More details will be made available in the coming months!

It's not too early to start planning for the 2013 Missouri GIS Conference! The conference will be at the Doubletree Hotel & Conference center in Chesterfield, Missouri on February 19-21, 2013. Visit www.mogis2013.org for more information. Registration for exhibitors is open now!

Please contact Katie Shepherd at shepherd@midlandgis.com if you have any questions about MMA's education opportunities or would like to add something to our calendar. All events are on the Missouri Mappers Association website at www.missourimappers.org/education.

Katie Shepherd, Education Committee Chair

Southwest MMA Chapter Report

SWMMA Chapter Meeting was held at 8am, Thursday July 26, 2012 at Port Arrowhead Resort, Lake Ozarks, MO. The meeting was called to order with 11 attendees. Our SWMMA Chapter has been hard at work this year. There was no election of officers at this time due to all officers starting the second year of their two-year term. Thanks to all those members who donated to our SWMMA Gift Basket given at Conference. We would like to give a special Thank you to recognize Lawrence County Assessor, Doug Bowerman, for his all hard work promoting the MMA Conference to the Missouri Assessors this year. Doug also generously donated the cash prizes given away for the Geocaching Event held Tuesday, July 24th. Greg and Brenda Dyer, also from Lawrence County, set up the Geocaching Event and taught us the tricks and tips to finding the geocaches. It was fun to see how competitive our MMA teams can be. We have asked Greg and Brenda to set up another Geocaching Event for our next SWMMA meeting in November. National GIS day is Wednesday, November 14, 2012, just two days before our next meeting. All members are encouraged to do something to commemorate GIS Day with their office or community and to share how they celebrated GIS Day at our meeting. Our next meeting will be held at 1pm on Friday, November 16th, 2012 at the Lawrence County Assessor's Office, Lawrence County Courthouse. We will be Geocaching outdoors, rain or shine, so dress appropriately for the weather that day. Be sure to bring your smartphone or GPS device.

Hope to see you there!
Barbara Kaszuba
SWMMA President

Geography Humor

<http://funnyjokes4me.blogspot.com/2008/09/clean-jokes-map-reading.html>

The young teacher of the earth science class was lecturing on map reading. After explaining about latitude, longitude, degrees and minutes the teacher asked Morris, "Suppose I asked you to meet me for lunch at 23 degrees, 4 minutes north latitude and 45 degrees, 15 minutes east longitude... ?"

After a confused silence, Morris offered this as his answer....

"I guess you'd be eating *alone*."

Free GIS Software for K—12 !

Great news! The Missouri Geographic Alliance, along with a number of other groups, has collaborated to bring to the STATE of Missouri, access to FREE Geographic Information Systems (GIS) software for all K-12 educators and students in public schools, private schools, homeschools, and to support K-12 youth activities and groups such as 4-H, Girl Scouts, Boy Scouts, etc for educational and administrative purposes. The MU press release with the link and further information regarding qualifications and can be found at:

<http://munews.missouri.edu/news-releases/2012/0919-k-12-students-to-receive-free-high-tech-mapping-software-courtesy-of-mu-geographer%E2%80%99s-collaborations/>

I asked some of the partners on the project what they thought this K-12 GIS license would provide in the state of Missouri and one of the most eloquent responses was from Elizabeth Cook, GIS professional in USDA's Natural Resources Conservation Service (NRCS) and Missouri GIS Advisory Council (Past-Chair):

"As GIS professionals, we realize that use of GIS software is not about knowing the right button to push or how pretty the map you make is. GIS is an analytical tool that conceptually bridges most other subjects such as geography, mathematics, statistics, logic, and biological sciences, to name a few. The opportunity to reinforce critical thinking and problem solving with the vast array of spatial data and processes available through the ESRI suite of softwares and data will nurture a new generation of professionals in all disciplines. The recent boom of spatially-enabled technologies and globally-integrated societies at a time of shrinking school budgets make the timing of this opportunity especially important."

A big thanks to all of our partner organizations, without their support this initiative would not have happened: eMints; the Missouri GIS Advisory Council; MOREnet; Missouri Botanical Garden's Litzinger Road Ecology Center; Missouri State Office of Geospatial Information, the Missouri Spatial Data Information Service, the Missouri Geospatial Extension Program; University of Missouri Geography Department and the other public and private universities have staff which also will support this K-12 effort, such as the University of Missouri, Northwest University and Washington University. And of course, Environmental Systems Research Institute (Esri) who made this opportunity possible through the creation of the statewide license program.

Please share this information with as many educators and administrators as you know. This is a great opportunity and there will be professional development opportunities not only at our upcoming conference but also in the future at other organizations conferences and through the Alliance!

Shannon

Shannon H. White, PhD
Coordinator, Missouri Geographic Alliance
Department of Geography
University of Missouri
8 Stewart Hall
Columbia, MO 65211
Phone: 573-882-0045
Fax: 573-884-4239
<http://mga.missouri.edu>
(38.94512, -92.32394)

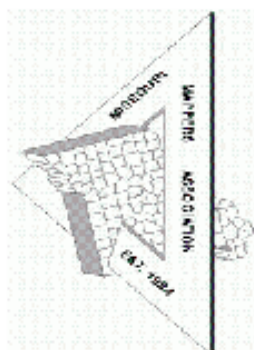


Affordable

- GIS Development
- WebGIS
- Map Maintenance
- Custom Solutions

Let us be your Plat Book Partner

816.528.4336/mappingsolutionsgis.com



MAPPER OF THE YEAR APPLICATION

The "Mapper of the Year" award is presented at the Missouri Mappers Association annual conference. The award is designed to honor an individual who has displayed outstanding abilities in the mapping field. Nominees must be a current member of MMA and have been a member for at least one year, and be technically proficient in mapping techniques and standards. Nominations should explain why the nominee merits this award.

Name of
Nominee: _____

Nominee's employer and position:

I believe _____ should be nominated for

"Mapper of the Year" because -

(Continue on additional sheet if necessary)

Your Name (Printed): _____

Signature: _____

Phone Number: _____ Email Address: _____

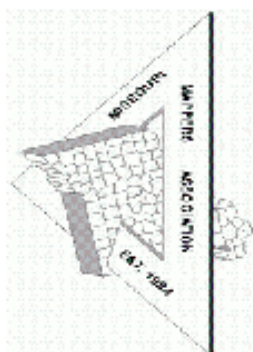
MAIL APPLICATION TO:

Marti Suiter, PMM

PO Box 314

Hermitage, MO 65668

or email to: martisuiter@aol.com or linda.f.reynolds@hotmail.com



OUTSTANDING BOSS OF THE YEAR APPLICATION

The "Outstanding Boss of the Year" award is presented at the Missouri Mappers Association annual conference. It is presented to honor the "Top Boss" who has displayed outstanding leadership abilities. Nominees must be a current member of MMA and have been a member for at least one year. Nominations should explain why the nominee merits this award.

Name of
Nominee: _____

Nominee's position: _____

I believe _____ should be nominated for

"Outstanding Boss of the Year" because

(Continue on additional sheet if necessary)

Your Name (Printed): _____

Signature: _____

Phone Number: _____

Email Address: _____

MAIL APPLICATION TO:

Marti Suiter, PMM
PO Box 314
Hermitage, MO 65668
or email to: martisuiter@aol.com or linda.f.reynolds@hotmail.com

Map Talk!

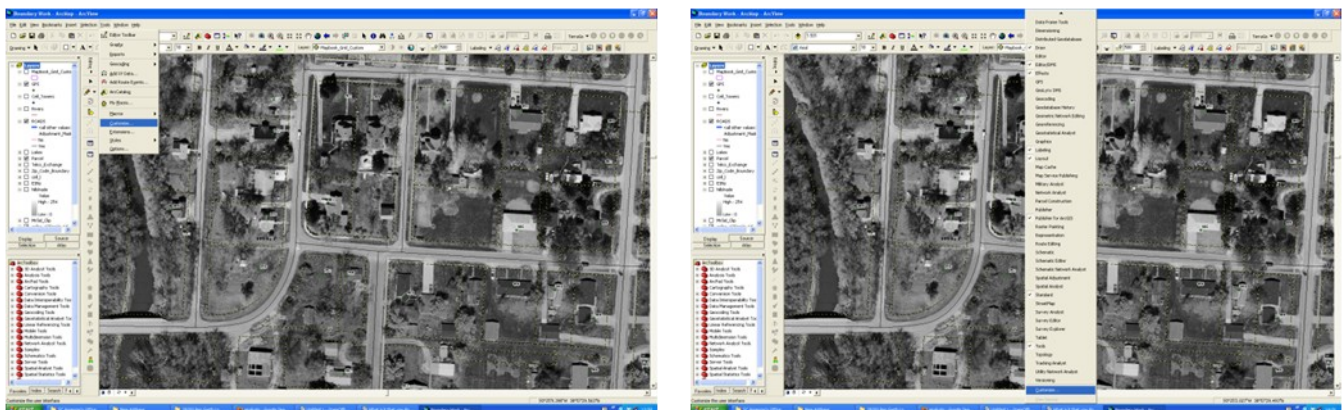
“Shortcuts”

By Brandon M Wolfe
GIS Technician
Saline County E9-1-1
ArcView 9.3.1

When I first started out as a GIS Technician, I quickly became frustrated by the editing process for vector data. Apparently suffering from a severe data dump from my training and education, I forgot that I could use shortcut tools inside of the ArcGIS software. While using the draw tool, I would often find myself going to the tools drop down menu to switch between the sketch tool and the the arc tool. While this wouldn't be maddening on the occasional basis, if you were tasked to redo your entire county, you probably would be fed up by the end of the day. I went through this process for about a month before a sudden epiphany came to me while talking to a good friend of mine. While explaining my issue to him, he asked me “Why in the world are you not creating shortcuts?” I looked at him, and being a man of pride and honor, I let the friend who had served with me while overseas know that I hated him. He was right though, and right now I am just hoping that he doesn't encounter this article to hold this against me. With that said, the following information is going to pertain to how to creating shortcuts, and creating/customizing your toolbars.

A shortcut is a key or combination of keys on your keyboard in which will perform a task other than inserting a letter or number inside of a word document. For instance, by pressing *CTRL and Z* simultaneously on your keyboard, your computer will automatically undo the task you had just completed. Additionally *CTRL plus C* will copy selected items, *CTRL plus V* will past the copied items, *CTR and B* will cause selected letters to become bold, and *CTR and Y* will redo any steps that you had previously undone. Of course these are standard “shortcuts” and there are much more out there. However, this article isn't about the standard.

To begin, make sure that you have ArcMap, ArcGlobe, ArcScene, or ArcCatalog open. For the purposes of this article I will be using Arcmap. First you will want to open the customize dialog box. You can do this by either going to *Tools/Customize*, or by right clicking your mouse inside any of the empty grey space inside of the software and scrolling down to customize.

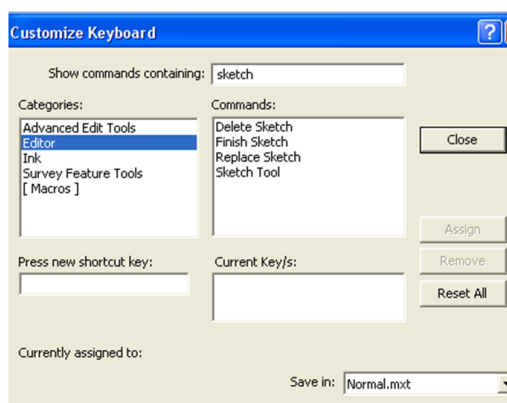


If you have tips and tricks for mapping or for GIS, comments on articles or suggestions for articles you would like to see please share them for future Map Talk columns! To submit a tip or if there

***is a specific topic you would like to see, please contact:
Melissa Johnson—mjohnson@colecouny.org or call me at
573-634-8901***

Map Talk! (continued)

Once the dialog box appears find the button **KEYBOARD** and left click on it.



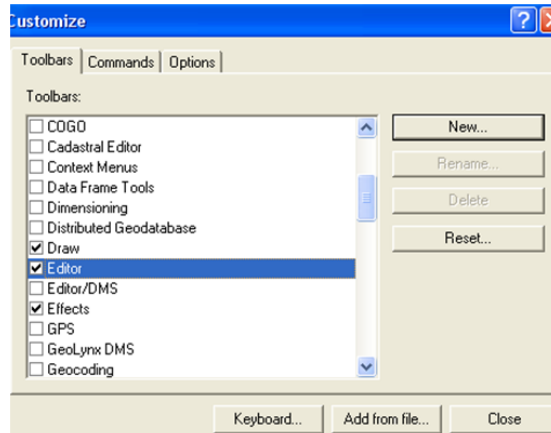
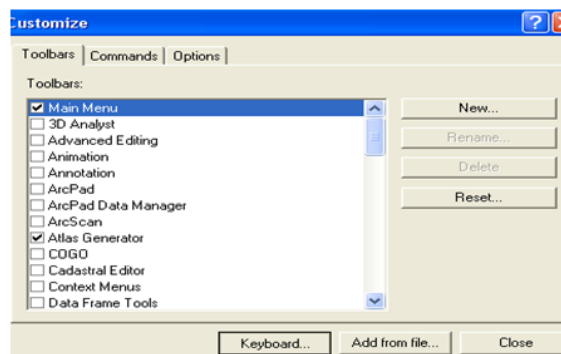
This will open a new dialog box titled *Customize Keyboard*. This box provides you the option to search for the tool that you want to assign a shortcut to by typing in the tool name, and then searching for the tool inside of its respective standard toolbox. Once you have located the tool, highlight it by left clicking on it with your mouse.

If a shortcut is already assigned to this tool the combination will be listed in the box under *Current Keys*:

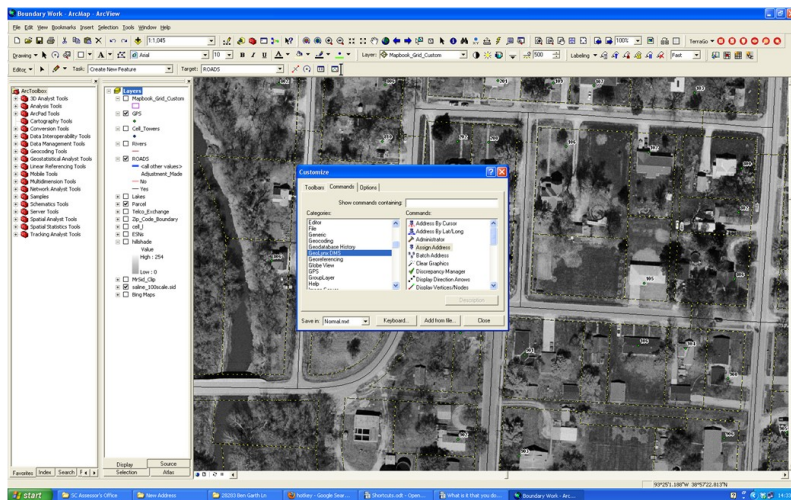
If there is not a shortcut or you want to replace the existing, do so by entering your desired key choice. If this combination already belongs to another tool, the tool and its toolbar will be listed next to the words *Currently assigned to*:. If nothing appears in this area, left click *Assign* and you are done. Yes, it is that simple. Additionally if the shortcut ever becomes a burden you can remove the shortcut by repeating the above process and using *Remove* instead of *Assign*.

Now since this article is about shortcuts I am also going to cover how to create or edit toolbars. First, repeat the above steps to reach the customize dialog box. Ensure that your toolbar is on, by placing a check next to the toolbar's name, or by selecting new.

Once the desired toolbar is on, select the *Commands* tab in the top of the dialog box. From here you can search for the tools that you want to add to the toolbar by the same process as shown during the shortcuts section. Once you find the tool you are looking for you can add it to your toolbar by simply dragging and dropping it onto the actual toolbar.



Additionally while in the *Customize* tab you can rearrange your tools inside of their toolbars. This is useful if you have a tool that is used often and placed in the middle of other tools that are not. Again, it is that easy, and can save you some headaches. If you have any questions, comments or concerns please feel free to contact me.



“What is it you do again?”

By Brandon M Wolfe
GIS Technician
Saline County E9-1-1

Since I started my career as a GIS Technician/Geospatial Engineer, I have repeated this simplistic question and answer session numerous times.

*“What do you do again?”
“I work with Geographical Information Systems.”
“Oh...what in the world is that?”*

I'm sure all of you who may be reading this have had this conversation to some variety before, and the answer is often too overwhelming for the recipient. In the end...well, we end up being named to some degree as a “map maker”. Now for all simplicity I am; partially because I spent a large portion of my adult life in the military, and partially because I grew up in small town, USA. No offense to anyone of either or both backgrounds, but I'm sure you don't want somebody correcting you on the technical name of a “come along”, or “fencing pliers” while you're running a fence. Some things are best left simple.

But once it comes to our jobs in Geospatial Science, there is a sense of pride in which simplicity just will not do. After all, you wouldn't describe your family doctor's profession as “the person who shoves a light into my ear”. We are professionals who have spent a vast amount of time dedicating our lives to the technological advancements of our society. Whether you're fabricating a digital copy of cadastral data, or creating to scale 3D renderings of hostile areas for the benefit of our men and women in uniform, in the end, what GIS professionals truly are doing is an underappreciated art to make all of our lives easier and safer while simultaneously providing knowledge for all to use. We are analysts who can tell you the quickest most cost efficient route from point A to point B. We are engineers who can uncover the feasibility of building by providing knowledge of flood zones, elevation, slope, soil, population density, zoning and other information. If provided with 4+ band multispectral imagery (MSI), we can even provide analysis of the health of vegetative growth, and distinguish between the different species of vegetation.

I'm sure everybody that is reading this article has within this past year heard the phrase “what we learned in Joplin”. Well what I learned from Joplin is that even the disaster recovery in Joplin and in neighboring Duquesne was eased by the presence of the work performed by the professionals within the Jasper and Newton County areas. If it were not for the work performed by the County Assessor's Office; FEMA (Federal Emergency



3-D View of the Joplin area tornado path

“What is it you do again?” (cont)

Management Agency), USACE (US Army Corps of Engineers), and the MOARNG (Missouri Army National Guard) would not have been able to track the status of recovery within the (Expedited Debris Removal Area) EDR so easily and efficiently. If not for the work performed by though it the city government and E911, personnel within the area would have been backtracking through roadways and wasting precious time as they discovered that some roads provided by TIGER lines (commonly used in Google maps, and Garmin's, etc) did not exist. And paper maps, charts, and tables that were presented to the leaders of our nation, they weren't created by “map makers”.

If after you have read this article you feel that you have gained nothing from the words inside, please do yourself and all of the professionals in our field a favor, and remember that **GIS professionals are not just “map makers”**. Maps, graphs, and charts are only the end result of our work so that others outside of our field can understand. We are professionals whose work is used by millions every day. As such, we should treat ourselves as professionals, and respect ourselves enough not to just call ourselves a “map maker”, or to say that we just make maps. When asked about your job, call yourself by your title. If you work with GIS, but your job title is “mapper”, request this to be changed to include GIS. Employers, thank your professionals for their hard work. Respect for our profession begins with us. So the next time somebody asks you “What is it that you do again?” explain to them the intricate workings of our profession in its entirety.

Board Meeting Minutes

MISSOURI MAPPERS ASSOCIATION BOARD MEETING MINUTES OCTOBER 12, 2012

The Missouri Mappers Association held it quarterly board meeting on Friday, October 12, 2012 at the Jasper County Courthouse with a quorum of executive board members in attendance and via conference call. Members present were: Lisa Mendpara, Lisa Perry, Erika Hagg and Barbara Kaszuba. Members joining in via conference call were: Katie Shepherd, Melissa Johnson, Tim Kean, Richard Kramer, Mark Duewell, Brandon Wolfe, Jason Sweet and Ken Olive.

Lisa Mendpara called the meeting to order at 10:05am.

Secretary Report: Katie Shepherd presented an overview of the previous June 21, 2012 meeting. Lisa Perry read the Treasurers Report that had been presented at the June board meeting. The overview of the board meeting on June 21, 2012 was approved.

Treasurer Report: Balance as of 07/18/2012 \$ 23,585.73

Receipts \$ 6,380.00

Balance + Receipts \$ 29,965.73

Disbursements \$ 17,381.04

Balance as of 10/12/2012 \$ 12,584.69

The Board approved the Treasurer report by Lisa Perry.

Committee Reports:

Annual Conference Report: Lisa Perry has been working with Tan-Tar-A for our 2013 MMA Conference.

Board Meeting Minutes (continued)

The theme will be “Get Your Kicks Mapping Route 66”. Lisa had several ideas for decorations and gifts to tie in with the Route 66 theme. Powers Entertainment will host a game show featuring MMA and Route 66 Trivia. The menu prices for meals are comparable to our previous conferences. Lisa will finalize the menu with Tan-Tar-A. There was much discussion about raising Registration prices to help cover costs. It was also suggested that we charge more for our workshops. Lisa will submit a draft of possible rate increases for 2013 conference and workshops to be approved by the Board.

Awards: Marti Suiter sent a report stating nomination forms will be included in the MMA newsletters. The Awards Committee will then select the winners from the returned nomination forms and report to the MMA Board for approval, prior to the 2013 MMA Conference.

PMM Certification: Marti Suiter sent a report addressing the revision of the wording of the Procedure Manual for the PMM Certification. The changes would affect Paragraph A regarding the Certification Committee selection and Paragraph L regarding points for Maintaining PMM Designation.

Education: Ken Olive reported that he was working with Shannon White to create a GIS training session to be given throughout the State sometime after the first of April. It will be at a modest cost and possibly at a discount for MMA members. Ken also has three volunteers who have offered to teach a one day basic mapping workshop based on IAAO’s Cadastral Mapping Workshop 650. It was suggested that maybe it could be made into a webinar. Katie Shepherd will check suggested dates of Assessors training. The committee will look into presenting a full day basic mapping course as a workshop at MMA conference. There are still openings available for the North Central Regional GIS Workshop in Trenton, MO on October 24, 2012.

Historical: Lisa Perry read Carla Palmer’s report. Carla has emailed Sandra Lanier regarding the pictures Sandra took at the 2012 MMA Conference. Carla will have those transferred to CD when she receives the pictures from Sandra.

Information Technology: Jason Sweet reported the website has been updated with the current minutes, sponsors and vendors, North Central Regional GIS Workshop info and the 14th Biennial Missouri GIS Conference details. If you have anything to be added to the website, email Jason at jsweet@Greenhorne.com.

Legislation: No Report.

Membership: Erika Hagg reported that Stephanie Stevens will reach out to all non-member counties throughout the State to create interest for possible new members. Erika has updated and revised the MMA membership database by adding more datasets and color-coding.

Publication: Melissa Johnson reported the deadline for the upcoming Newsletter is October 30, 2012. Please email your reports, articles and any other information you would like included in the newsletter before the end of the month to Melissa at mjohnson@colecounty.org. Committee reports were approved.

Chapter Reports:
East Central: No report

Board Meeting Minutes (continued)

West Central : No report

South West: Barbara Kaszuba reported their last Chapter meeting was held at Conference on Thursday, July 26, 2012 with 11 members in attendance. Thanks to all who donated to the Gift Basket given away at Conference. A special thank you goes to Doug Bowerman, Lawrence County Assessor, for all his hard work

promoting MMA Conference to the Missouri Assessors. Doug also generously donated the cash prizes given away at the Geocaching Event held on Tuesday, July 24th on our first day of MMA Conference. Greg and Brenda Dryer, also from Lawrence County, set up the Geocaching Event and taught us the tips and tricks to geocaching. The event was so well received, that we have asked them to put on another Geocaching Event at our next chapter meeting. It will be held at 1:00pm on Friday, November 16, 2012 at the Lawrence County Courthouse conference room. Be sure to bring your smartphone or GPS device. We will be geocaching outdoors, rain or shine, so dress accordingly.

North East: No report

North West: No report

All Chapter reports were approved

Old Business: There was an open discussion about Annual Conference Booklets. It was decided due to trying to hold down the cost of the upcoming conference, we will not have a booklet for 2013.

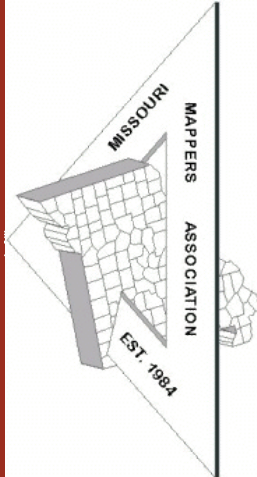
New Business: Mark Duewell will represent MMA when he attends the KAM Conference next week. He will also be taking the ArcGIS Server course being offered at KAM.

Erika Hagg represented MMA and manned the MMA booth at the Missouri Assessors Conference in September. She reported the results of the information received from the surveys she distributed. Erika also had a drawing from the returned surveys for a gift basket donated by MMA. The winner of the gift basket was Brad Hudson, Stone County Assessor.

It was also noted that Tan-Tar-A Resort is now under new management. Lisa Perry has been in contact with them and is progressing on finalizing the details for the 2013 Conference.

Our next MMA Board meeting will be held in January 2013 at the Jasper County Assessors Office, Jasper County Courthouse in Carthage, MO. Date to be announced. It was moved and seconded to adjourn the meeting. The meeting was adjourned at 11:17am.

*Respectfully submitted,
Barbara Kaszuba,
Secretary Protem*



Visit the new MMA
website!
[www.
missourimappers.org](http://www.missourimappers.org)

We have plenty of ad space available for upcoming issues! Please contact Melissa Johnson at mjohnson@colecouny.org for more information. Rates are as follows.

Business Card	\$25 per issue	4 issues—\$75
1/4 Page	\$50 per issue	4 issues—\$175
1/2 Page	\$75 per issue	4 issues—\$275
Full Page	\$100 per issue	4 issues—\$350

Article and News Submissions

Article and news submissions for topics that cover issues that are important to all of us can be sent via email or snailmail to the following address for consideration for future publications.

Melissa Johnson, GIS Manager
Cole County, Missouri
210 Adams St., 1st floor
Jefferson City, MO 65101
mjohnson@colecouny.org
Phone: 573-634-8901