

#### MMA Executive Committee

- President - Lisa Chapman
- Secretary - Brenda Dryer
- Treasurer - Lisa Perry
- Director 2011-2013 - Diedra Volkart
- Director 2011-2012 - Melissa Johnson
- Immediate Past President - Katie Shepherd

#### Inside this issue:

Immediate Past President Report	2
Committee/Chapter Reports	2 - 4
Workshop Offerings	5,6
Volunteer Geographic Information LaGISStic Report	7 - 8
Annual Meeting Registration Info	9 - 13
Map Talk! SEMO Workshop	14-15
MMA Braggin'	16

# MMA News

*Annual Meeting Edition!*

Volume 28 Issue 3

June 2012

## Letter from the President

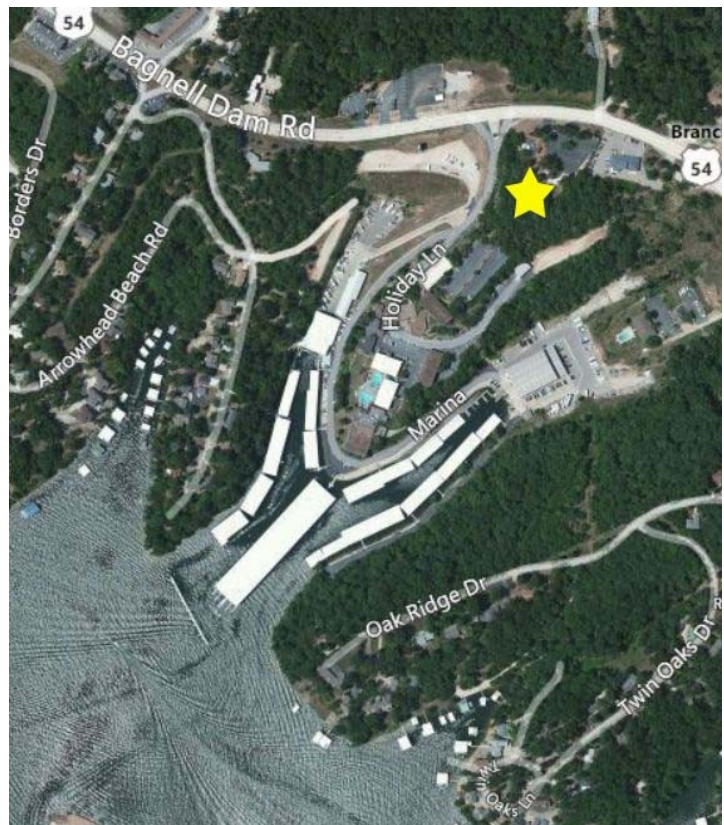
I am looking forward to seeing everyone on July 24-27 at The Resort at Port Arrowhead for our 28th Annual Conference. Kacie Neel, James Theisen, and the rest of the Annual Meeting Committee have some great workshops and speakers lined up for us! This year, we have more workshop choices on Wednesday, and several breakout sessions on Thursday. For entertainment, on Tuesday evening we will have a welcome reception and a geocache event, on Wednesday evening a "Wii Night" with the vendors, and on Thursday evening a dinner cruise. Thanks to everyone involved with planning the conference for all your hard work!

I encourage everyone who attends this year to get more involved with your local chapters and committees. Your involvement helps ensure the success of MMA. Be sure to attend your chapter meeting, and sign up to be on any committee for 2012-2013 that you would be willing to help with.

I want to thank Sue Ann Stokes for all her work during her time serving as President, and I am honored to step into the position a little bit early. I look forward to continuing to serve as MMA President, and working with you all for the next year!

See you at the Lake!

*Lisa Chapman*



## Immediate Past President Report

The Annual Conference is just around the corner and there will be lots of great opportunities for long-standing and new members to sign up for and become active in the various committees we have within MMA. We encourage you to think about signing up for some of these committees prior to the Annual Conference. For a detailed list of our current committee members and the roles of each committee, please visit our website at

<http://www.missourimappers.org/committees/>.

See you at the lake!

Sincerely,  
Katie Shepherd

---

## IT Committee Report

The 2012 Annual Conference registration forms are now available on the website, along with a link to the workshop descriptions. Be sure to visit [www.missourimappers.org](http://www.missourimappers.org) for more information. If you have any mapping or GIS-related events that you would like to share with our members, please send those to me at [shepherd@midlandgis.com](mailto:shepherd@midlandgis.com) so that we can post them on our events page and website calendar.

To be notified directly about training, GIS and mapping jobs, workshops and conferences, be sure to join the Missouri Mappers List Server.

**Visit <http://www.missourimappers.org/listserver.html> or follow these simple instructions to subscribe or unsubscribe to the MissouriMappersAssoc-L (the list server).**

### Subscribe:

1. Send e-mail to [listserv@lists.missouri.edu](mailto:listserv@lists.missouri.edu). Leave the subject line blank. Remove any tag lines or signature files. Type in the body of the message: **subscribe list\_name first\_name last\_name**.  
**i.e. subscribe MissouriMappersAssoc-L John Doe**

### Unsubscribe:

1. Send e-mail to [listserv@lists.missouri.edu](mailto:listserv@lists.missouri.edu). Leave the subject line blank. Remove any tag lines or signature files.

2. Type in the body of the message: **unsubscribe list\_name**. **i.e. unsubscribe MissouriMappersAssoc-L John Doe**

*NOTE: LISTSERV will automatically pull your e-mail address out of the message; you don't need to include it. You must always send messages to the list from the original e-mail account you used to subscribe.*

Katie Shepherd

---

## Membership Committee Report

I will be resigning from Membership Chair at the annual conference. If anyone is interested in doing this, please sign up at the conference.

Kacie Neel, Membership Chair

## Certification Committee Report

There has been no activity regarding certification this year. We will strive to encourage members to take the PMM Test in the upcoming year.

Submitted by,

*Marti Suiter, PMM  
Certification Committee Co-Chair*

The **Certification Committee** is responsible for managing the PMM designation program. To acquire designation, candidates must have a certain amount of experience and education, and complete a comprehensive mapping examination. Committee roles include:

- Reviewing applications for a member taking the Professional Missouri Mapper (PMM) exam
- Administering and grading the test
- Presenting a certificate at the Annual Meeting to applicants that pass the test
- The 2010-2011 Committee will be active participants in reviewing the current PMM examination and incorporating a GIS version of the exam.

## Publication Committee Report

The Publication Committee is always looking for fresh ideas and content for the MMA Newsletter. We have had some really great contributions this year and look forward to even more in future issues. I hope you are finding the content helpful and informative. Keep the great ideas/articles coming and sign up at the Annual Meeting to become a part of this committee! See ya at the lake!

*Melissa Johnson, Publications Chair*

**Check out this awesome video about mapping from the 40's. It really shows how far we have come with mapping technology!**

<http://bcove.me/b0fz2xxn>

**Thanks Ray Fox for sharing via the MGISAC listserv!**

## Treasurers Report

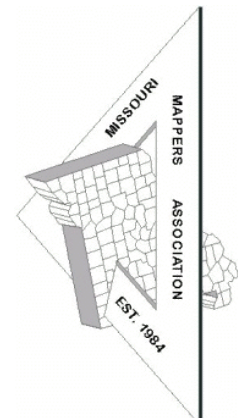
<b>Balance as of 04-20-2012</b>	\$20,580.45
<b>Total Receipts</b>	\$1820.00
<b>Balance + Receipts</b>	\$22,400.45
<b>Disbursements</b>	
Midland GIS Solutions	\$92.97
KNG	\$733.86
<b>Total Disbursements</b>	\$826.83
<b>Balance as of 06-21-2012</b>	\$21,573.62

*Lisa Perry, MMA Treasurer*

## Awards Committee

A big "Thank You" to everyone that sent in their award nomination forms for Boss of the Year and Mapper of the Year. All of our award recipients will be announced at the Annual Business meeting on Friday, July 27<sup>th</sup>. Please come and support our outstanding members!

Sincerely,  
*Katie Shepherd*



## Annual Meeting Committee Report

Don't forget to register for the conference!! Also chapter baskets will be given away at lunch on Thursday at the conference. Please leave your chapter basket at the registration table.

James and I will not be chairing the Annual Conference Committee next year, if anyone is interested in doing this, please sign up at the conference.

Kacie Neel



HELLO Missouri Mappers!!!

B&G Adventure here! It is almost time once again for the annual MMA Conference at Lake Ozark. This year we will be trying something new after the meet and greet party on Tuesday night!

GEOCACHING is a fun and adventurous way to get off the couch and get active! Some have described it as "Using multi-million dollar NASA satellites to find Tupperware in the woods!". For a little more information, please feel free to check out the main website at [Geocaching.com](http://Geocaching.com) and watch the associated video "Geocaching in 2 minutes".

At this year's MMA Conference, a Geocaching adventure is your's to be had should you accept the challenge!! THERE WILL BE PRIZES!!!! All of the caches will be very easy to find and can be found using either a handheld GPS device or a smart phone with one of several free Apps that are on the market. One such App is called C:Geo Opensource for the Droid phone or Geocaching Intro for I Phones. A handheld GPS unit really works the best. We will have computers available to download the cache information if you don't already have it done. You will be searching for 4 caches that are titled MMA '12 #1, #2, #3, #4. The final find won't be published until after the event so it will only be found by you! Wonder where it is???? I promise a safe and good time will be had by all!! The whole event shouldn't take more than two hours so come and be a part of the fun!!

See you there and be prepared to "Get Out, Find It, and Log It!!!".

Brenda & Greg Dryer



### Affordable

- GIS Development
- WebGIS
- Map Maintenance
- Custom Solutions

**Let us be your Plat Book Partner**

816.528.4336/mappingsolutionsgis.com

## West Central Chapter Report

James and I will be resigning as chairs of the chapter at the annual conference. If anyone is interested in doing this, please be at the chapter meeting at the annual conference Thursday morning. The chapter needs to make a basket to be given away at lunch on Thursday at the annual conference. If someone would like to take over this task, Please call or email me!!!

Kacie Neel

## New Workshop Offerings at MMA Annual Meeting!

The Annual Meeting Committee is bringing us some great choices in 1/2 day workshops this year and it they are a bargain at \$10 per workshop! A big THANKS to Kacie Neel and James Theisen for this great lineup! Be sure to sign up for one of these great workshops!

### Fundamentals of GPS for GIS (Lanny Schnipper, Seiler Instruments)

*This presentation will cover the essentials of GPS data collection for GIS applications. Topics will include: GPS applications for GIS data collection, accuracy levels, device configurations, basic technical overview, and case studies from various markets. This presentation is designed for those who have not yet experienced GPS data collection for GIS. Representative equipment will be available.*

### Using GPS for Asset and Issue Maintenance (Jay Riester, Seiler Instruments)

*This half-day workshop will cover the essentials of using GPS to maintain existing GIS assets. As GIS databases get populated with data over time, it is important to occasionally revisit the assets to verify and update their conditions. This helps ensure that GIS queries and maps produce accurate and timely information.*

*The process will focus on connecting to an existing GIS dataset and using GPS to navigate, update and add attributes, and integrate the changes to the back-office database with a minimum amount of data translation. Participants will navigate to existing features, update attributes and log new positions and assets.*

*Trimble Field Inspector will be used during this workshop. Equipment will be provided for a hands-on experience. No previous GPS data collection experience is required. However a basic understanding of GIS database design will be helpful.*

### The 5 Waves of Trust (Center for Management and Professional Development)

*The ability to build trust and maintain a high level of integrity is a key competency for leaders today. After all, truly GREAT LEADERS don't dictate—they instead skillfully influence others to do great things. Influence comes from a leader's ability to maintain a sense of credibility that inspires their team to believe them—and to believe in them. This 4-hour program based upon the bestselling book, "The Speed of Trust," by Stephen M. R Covey, is devoted to the ONE THING that is common to every individual, work team, and organization—TRUST. Trust affects the quality of relationships, communication, work projects—every effort in which we are engaged. Trust can virtually alter the outcome of any future moment of our lives, both personally and professionally. Through the use of video examples, discussion and application activities, learners will explore the premise that there are various layers of trust to which today's leaders must be attuned: Self Trust, Relationship Trust, Organizational Trust, Market Trust and Societal Trust. By focusing on each layer (or wave) at the right time, leaders can: build credibility in ways that boost employee engagement and productivity; reduce the cost of poor performance associated with a climate of distrust; and improve business results by increasing the loyalty of the customers who depend upon their business for the products and services they need or want.*

*Continued on page 6*



## New Workshop Offerings at MMA Annual Meeting ! (cont.)

### Working Together (Center for Management and Professional Development)

*Every team follows written or unwritten "rules" that exist to promote respect, cooperation and productivity for its members. At times, circumstances can compel one or more team members to move away from these rules, causing concern and unrest among other members of the team. This half-day workshop will examine common workplace "rules," why team members sometimes can't or won't follow these rules, and what techniques or actions other team members can use to help them cope with and resolve these situations*

### ArcGIS Online (Tim Hensley)

*ArcGIS Online allows an organization to extend its GIS beyond its traditional reach. This hands-on workshop will examine what anyone can do to find and use data in ArcGIS Online, build and share maps with others, and incorporate ArcGIS Online into your organization's GIS workflow. Readily available Esri web solutions will also be highlighted. (Beginner, Lab)*



**Integrity™ Web GIS Solutions**  
**GIS Program Development**  
**Data Collection Services**

[WWW.MIDLANDGIS.COM](http://WWW.MIDLANDGIS.COM)  
[WWW.INTEGRITYGIS.COM](http://WWW.INTEGRITYGIS.COM)  
501 North Market  
Maryville, MO 64468

**EMAIL:** [gis@midlandgis.com](mailto:gis@midlandgis.com)  
**TWITTER:** MidlandGIS  
**OFFICE:** 660.562.0050

Delivering Solutions with Integrity

### Intro to ArcGIS 10 (Josie Bock, Great Rivers)

*This course will cover the fundamental concepts and basic functions of GIS, the basics of mapping, and the different data structures used within the ArcGIS 10 software environment. Students will work to develop basic software skills by working with ArcGIS tools to import and create data, query databases, and make maps.*



**Join us Wednesday evening  
for  
Wii Bowling with the Vendors**

**Wii Bowling Prizes will be given away!**

**A BIG THANKS** to our vendors for helping support this conference with your participation!

## Volunteer Geographic Information

### **How to create new digital data during tight economic times and engage youth in your community**

*By Shannon White*

Youth often get a bad reputation of being lazy or not interested in the world around them. Add technology to the mix and the reputation expands to youth interest reserved to things that beep or blip at them on a small screen. This is not always the case, many youth simply do not know how to engage in their local communities and want to use their technology experience in useful and meaningful ways. It is our job as adults and professionals, to find the ways to ask youth to engage in the community and acknowledge the skills and capabilities that they bring to the table.

Recently, I sent a video story out across the Missouri GIS Advisory Council listserv about a 4-H youth group in Haywood County, Tennessee that is assisting their local county in collecting data about storm water drains, sewers and drains. These middle and high school students are collecting the information through GPS technology and using GIS and aerial imagery to verify their work once back out from the field. As of the time the video was made they had collected 700 pieces of data that was of use to the local municipality. The students are engaged in math, science and technology while also providing the community with data that would not have otherwise been collected due to budget realities. The video of the 4-H Flood Chasers, their self-designated name, work can be found at: [http://agriculture.tennessee.edu/news/VideoReleases/1206\\_chasers.htm](http://agriculture.tennessee.edu/news/VideoReleases/1206_chasers.htm)

I often talk to groups of professionals about the power of engaging youth as part of the work of a community. It helps the youth to become more aware of the geography and the interconnected nature of their community. And when the work is real, and youth understand why it is needed they will be professionals and often are more careful about data collection than some college students I have worked with on GPS/GIS projects.

Who in your community might be interested in working with you to perform community service? A local 4-H club, a Girl Scout or Boy Scout Troop, another youth based organization, or a classroom teacher. Often youth group leaders and classroom educators are looking for community partners to engage with that tie in with topics the youth are studying or trying to gain experience with. What is the cost? That depends, it will take time to work with an adult leader to discuss the scope of the project you need completed, accuracy requirements, realistic timelines, etc. Do you have the equipment or will it need to be borrowed? Both 4-H and the Missouri Geographic Alliance have GPS units that can be borrowed by groups and educators for specific projects. While these units have a guaranteed accuracy of 5m, this is often just good enough for data collection of features like fire hydrants (if you can't see the fire hydrant within 5 meters there are bigger issues you have!) . The Missouri Geospatial Extension program has 4 mapping grade GPS units that are able to be checked out for projects that might need more accuracy. They have an accuracy of 1cm -28cm based on the time the individual is willing to stand at the feature. Next on your cost list is

*Continued on page 8*

## Volunteer Geographic Information (cont.)

probably the GIS software. Currently the Missouri Geographic Alliance is working on statewide Esri GIS licenses for K-12 educational institutions (public and private) as well as for youth serving organizations. While this is very close to becoming a reality, educators and youth organizations have many ways to access the software through Esri grants and by partnering with groups like the Alliance or Missouri's Geospatial Extension Program.

Still concerned? If you are concerned about the accuracy of what youth can provide to you, consider a small pilot project in a park or of something that is on the to-do list but is at the bottom because of time and money issues. I am sure you will be pleasantly surprised by the work that comes from the group. Yes, there will always need to be adjustments made in data collection techniques, requirements of what you want collected ----but isn't that true of any project?

If you are curious about how your community might engage with a local youth group or if you work with (or know of) a youth group that has an interest in this type of project, please contact Dr. Shannon White, Coordinator of the Missouri Geographic Alliance to further discuss your idea at [mga@missouri.edu](mailto:mga@missouri.edu).

*If this article inspires you to get involved with a youth organization or group to do something similar in your community, please share your experience in a future article!*

---

## LaGISStic Group

The LaGISStic GIS User's Group (Lake Area GIS User's Group-Together In Cooperation) hosted 3 days of beginning GIS training and are very excited to bring their newbies into the fold. The group has great plans for events and education that will show people the GIS spark.

This summer, they are going to offer an ESRI webinar on ESRI's ArcGIS Online showing everyone the power of mapping for free. In September, they are planning a Going Mobile Barbecue to allow vendors and GIS creative minds the opportunity to show off their GIS Mobile apps and projects while enjoying one thing that makes the Ozarks fun...barbecue!! Networking with peers and finding out what is out there is the theme.

In October, the group is going to get into the Halloween spirit by opening up their Emergency Operations Center in Exercise Mode to fight a **ZOMBIE APOCALYPSE** GIS style. Come join us and have fun while learning how to use maps to save the world!!!

Get in touch with Leslie Chamberlin at (573)346-4440 or [leslie\\_chamberlin@camdenmo.org](mailto:leslie_chamberlin@camdenmo.org) if you are interested in learning more.

*Leslie Chamberlin*



Missouri Mappers Association: *A Recipe for Mapping*

July 24th – 27th, 2012

The Resort at Port Arrowhead, Lake Ozark, MO

*There is a discount for multiple attendees from the same organization; each attendee should complete a separate registration form.*

NAME: \_\_\_\_\_

TITLE/ORGANIZATION: \_\_\_\_\_

ADDRESS: \_\_\_\_\_

PHONE NUMBER: \_\_\_\_\_ EMAIL ADDRESS: \_\_\_\_\_

**GENERAL CONFERENCE REGISTRATION FEE (Please check one)**

\$90 – 1<sup>st</sup> Attendee/Organization ☐ \$70 – 3<sup>rd</sup> Additional Attendee/Organization ☐

\$80 – 2<sup>nd</sup> Attendee/Organization ☐

**SPECIAL OFFER FOR ASSESSORS:**

Bring your mapper and take 50% off of your registration! I am an Assessor attending with a Mapper ☐

Conference registration includes MMA Annual Dues; registration gift; Tuesday Welcome Reception; Wednesday Vendor Reception (Wii Night); Thursday breakfast and lunch; Thursday breakout sessions; Thursday night dinner boat cruise; Friday breakfast and Annual Business Meeting.

ATTENDING TUESDAY GEOCACHE EVENT YES \_\_\_\_\_ NO \_\_\_\_\_

ATTENDING TUESDAY WELCOME RECEPTION YES \_\_\_\_\_ NO \_\_\_\_\_

**WORKSHOPS – WEDNESDAY, JULY 25<sup>th</sup>**

1. ArcGIS Online	8:30am – 11:30am	\$10 _____
2. Fundamentals of GPS for GIS	8:30am – 11:30am	\$10 _____
3. Working Together	8:30am – 11:30am	\$10 _____
4. Intro to ArcGIS 10	1:00pm – 4:30pm	\$10 _____
5. Using GPS for Asset/Issue Maintenance	1:00pm – 4:30pm	\$10 _____
6. The 5 Waves of Trust	1:00pm – 4:30pm	\$10 _____

If you plan to bring additional guests to any of the conference meals or other events, the cost per additional meal is \$15 per person for adults, and \$10 per person for children. Please indicate the number of guests you will be bringing, the meals/events you expect them to attend, and the associated costs in the space below.

# Additional Guests	Meal/Event they will attend	Amount
_____	_____	_____
_____	_____	_____

TOTAL (Please make checks payable to Missouri Mappers Association) \$ \_\_\_\_\_

**REGISTRATION DEADLINE: JULY 10<sup>th</sup> 2012**

**Mail completed form with payment to:**

Kacie Neel, Conference Coordinator  
Missouri Mappers Association  
319 South Lamine St. Ste B-10  
Sedalia, MO 65301

**Reserve Your Room at The Resort at Port Arrowhead**

3080 Bagnell Dam Boulevard  
Lake Ozark, MO 65049  
(800) 532-3575 or [www.theresortatportarrowhead.com](http://www.theresortatportarrowhead.com)  
Room Rate: \$83/Night Conference Code: MMA 12

**I AM NOT ATTENDING THE CONFERENCE,  
BUT I WANT TO PAY MY ANNUAL DUES**

If you are not attending the Annual Conference, you may still renew your membership using this form.

If you will be attending the Conference, please disregard this form.

NAME: \_\_\_\_\_

TITLE/ORGANIZATION: \_\_\_\_\_

ADDRESS: \_\_\_\_\_

PHONE NUMBER: \_\_\_\_\_

EMAIL ADDRESS: \_\_\_\_\_

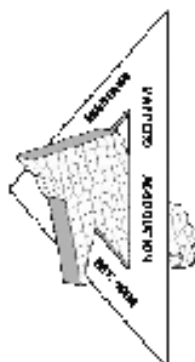
ANNUAL MMA DUES \$15.00 \_\_\_\_\_

NOTE: Chapter dues are collected by each individual chapter, and should not be included on this form.

Please make checks payable to Missouri Mappers Association.

Send completed dues renewal form and check to:

Kacie Neel, MMA Membership Director  
Pettis County GIS  
319 South Lamine St. Ste B-10  
Sedalia, MO 65301



**Missouri Mappers Association: *A Recipe for Mapping***  
**28<sup>th</sup> Annual Conference – July 24-27, 2012**  
**The Resort at Port Arrowhead, Lake Ozark, MO**

**VENDOR REGISTRATION FORM**

Don't miss your chance to exhibit at this year's conference. Wednesday night is Wii Night with the vendors!! Conference attendees will play Wii bowling at all vendor stations and finger food/drinks will be provided. We have moved the vendors to a different location. Vendors will be located in the banquet room across from the indoor pool. Be sure to return your form **with payment** as soon as possible!

COMPANY NAME: \_\_\_\_\_

COMPANY CONTACT PERSON: \_\_\_\_\_

MAILING ADDRESS: \_\_\_\_\_ CITY/STATE/ZIP: \_\_\_\_\_

PHONE NUMBER \_\_\_\_\_ EMAIL ADDRESS \_\_\_\_\_

TYPE OF SERVICE DISPLAYED: \_\_\_\_\_

NAMES OF EXHIBITORS: (One representative included in Exhibit Fee. All exhibitor representatives must be registered. Use additional sheet if necessary.)

Exhibitor registration (per person) includes Vendor Reception (Wii Night), Thursday breakfast, Lunch with Vendors, and Dinner Boat Cruise.

1. NAME: \_\_\_\_\_ TITLE: \_\_\_\_\_

2. NAME: \_\_\_\_\_ TITLE: \_\_\_\_\_

3. NAME: \_\_\_\_\_ TITLE: \_\_\_\_\_

**EXHIBITOR FEES**

EXHIBIT SPACE	\$400.00	_____
ADDITIONAL REPRESENTATIVES	\$75/person	_____
SPONSORSHIP	\$100	_____

REGISTRATION DEADLINE: JULY 10<sup>TH</sup> 2012

TOTAL (checks payable to Missouri Mappers Association) \$ \_\_\_\_\_

Mail completed form with payment to:

Kacie Neel, Conference Coordinator

Missouri Mappers Association

319 South Lamine Ave Ste B-10

Sedalia, MO 65301

Questions: Contact Kacie Neel at

[kacie@pettisco.com](mailto:kacie@pettisco.com) or

(660) 827-4800 Ext 2

\*\*\*This form is also available at [www.missourimappers.org](http://www.missourimappers.org)\*\*\*

**Missouri Mappers Association: *A Recipe for Mapping***  
**28<sup>th</sup> Annual Conference – July 24-27, 2012**  
**The Resort at Port Arrowhead, Lake Ozark, MO**

**VENDOR INFORMATION**

**EXHIBITOR SCHEDULE**

<b>Exhibitor Set-up:</b>	Wednesday, July 25, 2012	12:00-5:00 p.m. (Room D)
<b>Vendor Reception (Wii Night):</b>	Wednesday, July 25, 2012	5:30pm – 8:00 pm
<b>Exhibit Hours:</b>	Thursday, July 26, 2012	8:00 am. - 3:00 p.m.
<b>Exhibit Teardown:</b>	Thursday, July 26, 2012	3:00 p.m.

*Vendors are invited to join us for a Dinner Boat Cruise on Thursday from 6:00-8:00 p.m.*

**LODGING**

The Resort at Port Arrowhead  
3080 Bagnell Dam Boulevard  
Lake Ozark, MO 65049  
(800) 532- 3575

[www.theresortatportarrowhead.com](http://www.theresortatportarrowhead.com) (Group Code: MMA12)

Room rates are \$83/night. Be sure to ask for the Missouri Mappers Conference rate!

**BASIC EXHIBIT FEE INCLUDES:**

- 8x10 booth space
- Draped back wall, table, and 2 chairs
- Conference meals for one person
- One year MMA membership dues
- Current MMA membership list

**Additional booth Personnel:** \$75 each (includes meals and MMA dues)

**SPONSORSHIP: \$100**

- Vendor Reception Sponsorship (Wii Night)
- Includes special recognition in the conference program and your logo on a display in the exhibit hall)

*\*\*\*Please note that all Conference Events have been moved to a new location within the Resort at Port Arrowhead property. Please see the complete Conference Agenda for the full schedule and locations of all conference events.\*\*\**

## 2012 Missouri Mappers Association Annual Conference Agenda

Tuesday, July 24	Wednesday, July 25	Thursday, July 26	Friday, July 27
	7:30-9 a.m. Registration Next to the hotel registration desk	7:30-9 a.m. Registration Next to the hotel registration desk	7-9 a.m. Full Breakfast Room D
	7-8:30 a.m. Continental Breakfast/ PMM Meeting Room D, Across from indoor pool	7-8:45 a.m. Continental Breakfast/ Chapter Meetings Room D, Across from indoor pool	
	<div>Ozark Meeting Room</div> <div>8:30-11:30 ESRI Tim Hensley</div> <div>ArcGIS Online</div>	<div>8:45-9 a.m. President's Speech 9-10 a.m. Keynote Speaker Stacey Shore RE/MAX Portside Realtor</div> <div>Room A 10:30-12 Midland "GIS and Return on Investment"</div> <div>Room B 10:20-12 David Townsend National Title Insurance</div> <div>Room C 10:20-12 Schneider Corp</div>	9-10 Business Meeting Room D
	<div>11:30-1 LUNCH ON YOUR OWN</div> <div>1-4:30 Great Rivers GIS Josie Brock ArcMap 10</div> <div>1-4:30 Seiler Instrument Jay Riester Using GPS for Asset and Issue Maintenance</div> <div>1-4:30 Center for Management and Professional Development "The 5 Waves of Trust"</div>	<div>12-1:30 LUNCH WITH THE VENDORS</div> <div>1:30-3 Elizabeth Cook USDA LIDAR</div> <div>1:30-3 David Townsend National Title Insurance</div> <div>1:30-3 Curtis Copeland City of Branson "Using GIS after the Branson Tornado"</div>	
5:00-6:00 p.m. Welcome Reception Missouri Room	<div>FINGER FOODS AND DRINKS Wii bowling With The Vendors Room D Across from indoor pool 5:30-8 p.m.</div>	<div>3-4:30 Gopala Borchelt Table Rock Water Quality</div> <div>3-4:30 David Townsend National Title Insurance</div> <div>3-4:30 Schneider Corp</div>	
6-? Geocaching Missouri Room	Wii Bowling prizes to be given away	6-8 p.m. Dinner Boat Cruise Dinner to be served on the Tropical Island Cruise Boat will leave promptly at 6 Meet at the dock. Don't be late!	



## Map Talk!

### Have You Ever Tried to Open an ArcINFO Interchange File (.e00)?

Ken Olive, Chief Deputy Assessor, Camden County

Sometimes you will receive data from an agency or group in .e00 file format and when you try to open it, you get all types of comments, errors, or nothing.

In short, an .e00 file is an ArcINFO Interchange File, also known as an export file which is used to enable a coverage, grid to TIN, or other tables to be transferred between non-networked computers. If you are using ArcINFO you can use the IMPORT FROM INTERCHANGE FILE tool and the EXPORT TO INTERCHANGE FILE TOOL. But many agencies/offices use ArcEditor or a lower level of ArcGIS Desktop.

There is a way to open the .e00 file in ArcCatalog.

Open ArcCatalog.

Click on the VIEW MENU then click on the TOOLBARS, and then click of ArcVIEW 8.x TOOLS toolbar.

Click the CONVERSION TOOLS drop down menu.

Click IMPORT FROM INTERCHANGE FILE.

Click the INPUT file Browse button and look for the .e00 file you want to import.

Click the .e00 file and then click OPEN.

Then click the OUTPUT DATASET BROWSE button and look for the location where you want the OUTPUT DATASET to be saved, and then click SAVE.

Click OK.

This should let you import the .e00 file and be able to use it in your system.

These tips are from ESRI:

The input .e00 file cannot be placed in a directory that has a space in the name or space in the path to the directory.

**NOTE: This article applies to ArcMap version 9.x.**

*If you have tips and tricks for mapping or for GIS, comments on articles or suggestions for articles you would like to see please share them for future Map Talk columns! To submit a tip or if there is a specific topic you would like to see, please*

*contact:*

*Melissa Johnson—[mjohnson@colecouny.org](mailto:mjohnson@colecouny.org) or call me at 573-634-8901*

*Continued on page 14*

## Map Talk! (continued)

The Output Coverage or Grid cannot be placed in a directory that has a space in the name or in the path to the directory.

The Output Coverage or Grid Name cannot be more than 13 characters long.

The Output Coverage or Grid Name cannot contain special characters, like #, @, %. You can use the underscore mark.

For further information on the ArcINFO Interchange File look at the web helps on the ESRI RESOURCES website. The ESRI RESOURCES website contains information on almost anything you will have a question about. Take time to look and bookmark the website.

<http://resources.esri.com>

*What's better than a cruise on the lake??*

**Dinner and a cruise of course!  
Be sure to join us Thursday  
evening for a Tropical Island  
Dinner Cruise  
from 6 - 8 pm.**



## SEMO Workshop Update

The 3rd Annual SEMO workshop hosted by the Career and Technology Center and sponsored by MGISAC and MOMAPPERS drew 50 attendees. A number of MAPPERS presented - including Stan Balsman, Curtis Copeland, Mark Duewell and Ray Fox. Lunch (CiCi's Pizza) was late but otherwise the workshop and facilities came off quite well. A number of vendors were present and offered booths and information.

*Mark Duewell, MSDIS*

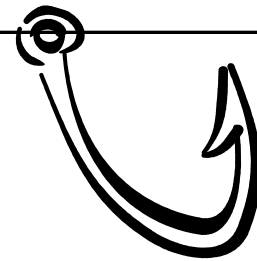
## MMA Braggin' Board



**84 lb  
Flathead  
Catfish!**

Pictured left to right is 8 year old granddaughter Caitlyn Smith, Gladys Smith, Gladys' son Clay Smith, and 5 year old grandson Carter Smith.

**WOW!**  
Take a look at these whoppers caught by St. Clair County Assessor Gladys Smith and her son Clay using a trotline on the Osage River!



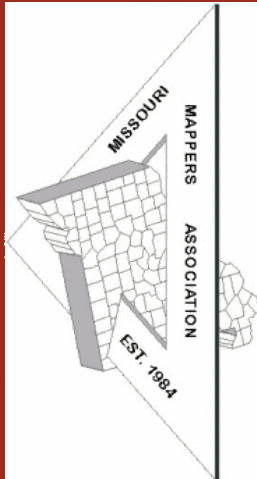
### Fun Fact:

According to Missouri Dept of Conservation, The Missouri State Record for a flathead catfish is 99 lbs. It was caught with a bank pole on the Missouri River near Mokane in 2010.



**40 lb  
White  
Catfish!**

Do you have exciting news you would like to share? Please send your information to me at [mjohnson@colecounty.org](mailto:mjohnson@colecounty.org).



Visit the new MMA  
website!  
[www.  
missourimappers.org](http://www.missourimappers.org)

**We have plenty of ad space available for upcoming issues! Please contact Melissa Johnson at [mjohnson@colecouny.org](mailto:mjohnson@colecouny.org) for more information. Rates are as follows.**

<b>Business Card</b>	<b>\$25 per issue</b>	<b>4 issues—\$75</b>
<b>1/4 Page</b>	<b>\$50 per issue</b>	<b>4 issues—\$175</b>
<b>1/2 Page</b>	<b>\$75 per issue</b>	<b>4 issues—\$275</b>
<b>Full Page</b>	<b>\$100 per issue</b>	<b>4 issues—\$350</b>

### **Article and News Submissions**

Article and news submissions for topics that cover issues that are important to all of us can be sent via email or snailmail to the following address for consideration for future publications.

Melissa Johnson, GIS Manager  
Cole County, Missouri  
210 Adams St., 1st floor  
Jefferson City, MO 65101  
[mjohnson@colecouny.org](mailto:mjohnson@colecouny.org)  
Phone: 573-634-8901